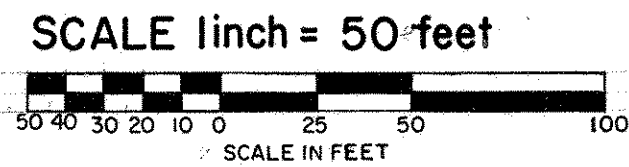
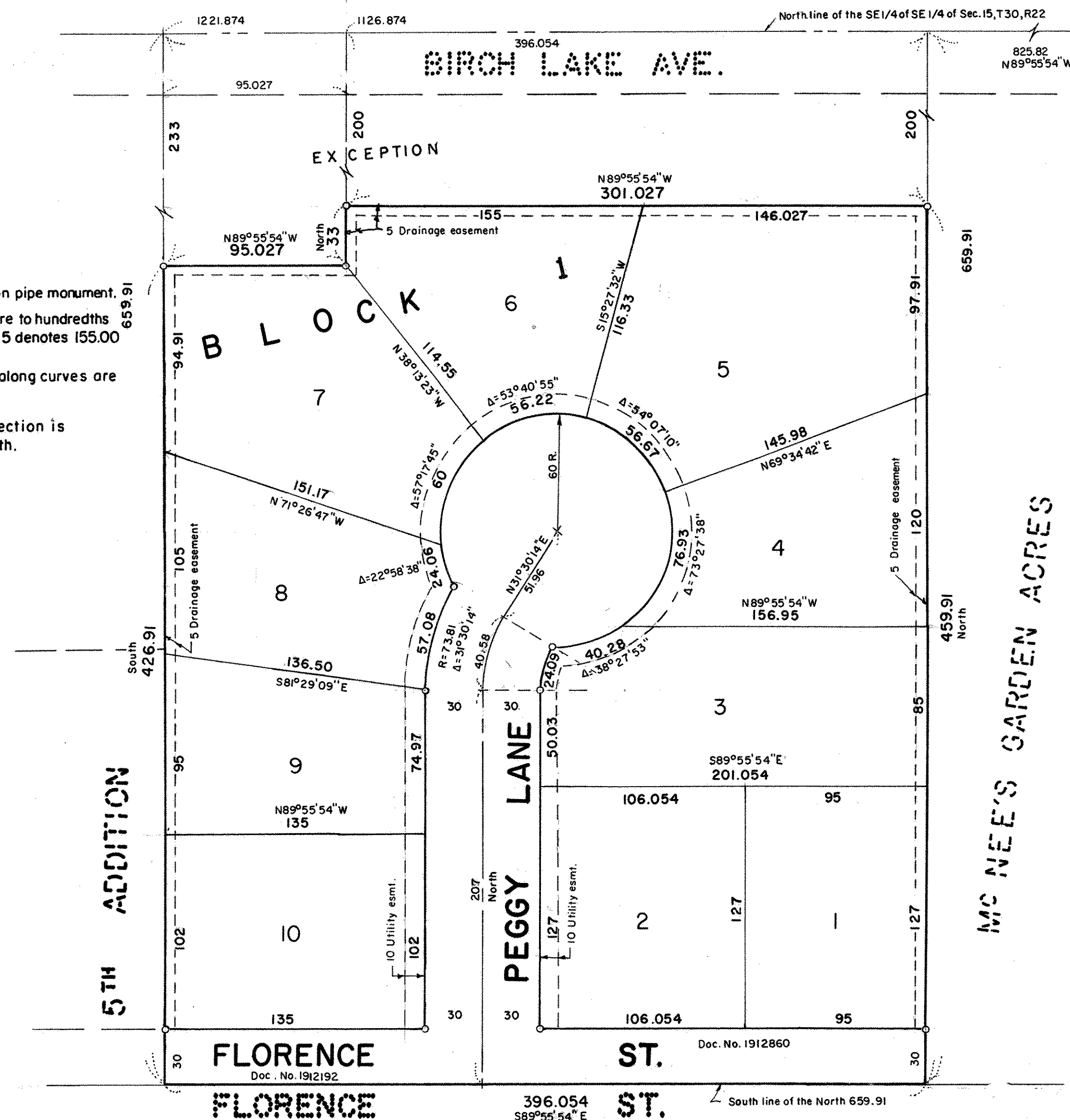


# KOHLER ADDITION



CITY OF WHITE BEAR LAKE  
RAMSEY COUNTY, MINNESOTA

CHARLES O. GEORGI COMPANY  
CIVIL ENGINEERING & LAND SURVEYING



o Denotes iron pipe monument.  
All distances are to hundredths of a foot thus 155 denotes 155.00 feet.  
All distances along curves are arc lengths.  
East line of Section is assumed North.

Know All Persons By These Presents that Clifford M. Kohler and Janice D. Kohler, husband and wife, Helen M. Kohler, widow, owners of the following described property situated in the City of White Bear Lake, Ramsey County, Minnesota

The West 396.054 feet of the East 1221.874 feet of the North 659.91 feet of the SE 1/4 of the SE 1/4 of Section 15, T30, R22 excepting there from the following: the West 95.027 of the East 1221.874 feet of the North 233 feet thereof, and the West 301.027 feet of the East 1126.874 feet of the North 200.0 feet thereof, Subject to Florence Street.

I, Charles O. Georgi, hereby certify that I have surveyed and platted the property described in the dedication of this plat as KOHLER ADDITION; that this plat is a correct representation of said survey; that all distances are correctly shown on the plat; that all monuments have been correctly placed in the ground as shown; that the outside boundary lines are correctly designated on the plat; and there are no wet lands, easements or public highways other than as shown thereon.

*Charles O. Georgi*  
Registered Land Surveyor  
Minnesota Registration No. 3960

Have caused the same to be surveyed, platted and known as KOHLER ADDITION and do hereby dedicate to the public for use forever the Street, Lane, and utility and drainage easements as shown on the plat.

Have hereunto set our hands this 30<sup>th</sup> day of December, 1977.

Signed:  
*Clifford M. Kohler*  
Clifford M. Kohler  
*Janice D. Kohler*  
Janice D. Kohler

Have hereunto set my hand this 30<sup>th</sup> day of December, 1977.

Signed:  
*Helen M. Kohler*  
Helen M. Kohler

STATE OF MINNESOTA }  
COUNTY OF RAMSEY } SS

The Surveyor's certificate was subscribed and sworn to before me, a Notary Public, this 6<sup>th</sup> day of December, 1977.

*C. M. Christen*  
Notary Public, Ramsey County, Minnesota  
My Commission Expires Nov. 6, 1979

Approved and accepted by the City Council of the City of White Bear Lake Minnesota, this 13<sup>th</sup> day of Dec., 1977.

*Robert J. Henn* Mayor  
*Raymond A. Seidenaler* Clerk

No delinquent taxes and transfer entered this 9<sup>th</sup> day of January, 1978.

*Law McTernan* Director  
Department of Property Taxation

By *pp. Olesund* Deputy

County Recorder, County of Ramsey, State of Minnesota,  
I hereby certify that this plat of KOHLER ADDITION was filed in this office this 9<sup>th</sup> day of January, 1978 at 10 o'clock A.M. and was filed in Book of Plats, page and that the copies were compared with the Official Plat and found to be true and correct copies thereof.

County Recorder  
By \_\_\_\_\_ Deputy

Pursuant to Chapter 7, Minnesota Laws of 1976, this plat has been approved this 9<sup>th</sup> day of January, 1978.

*F. R. Kvidera*  
F. R. Kvidera  
Acting County Surveyor

STATE OF MINNESOTA }  
COUNTY OF Ramsey } SS

The foregoing instrument was acknowledged before me this 30<sup>th</sup> day of December, 1977 by Helen M. Kohler, widow.

*Eunice M. Banken*  
EUNICE M. BANKEN  
Notary Public, Ramsey County, Minn.  
My Commission Expires Nov. 1, 1978  
Notary Public, Ramsey County, Minnesota  
My commission expires 11/1/78

STATE OF MINNESOTA }  
COUNTY OF Ramsey } S.S.

The foregoing instrument was acknowledged before me this 30<sup>th</sup> day of December, 1977 by Clifford M. Kohler and Janice D. Kohler, husband and wife.

*Eunice M. Banken*  
EUNICE M. BANKEN  
Notary Public, Ramsey County, Minn.  
My Commission Expires Nov. 1, 1978  
Notary Public, Ramsey County, Minnesota  
My commission expires 11/1/78

Abstract # 1910037

KOHLER ADD