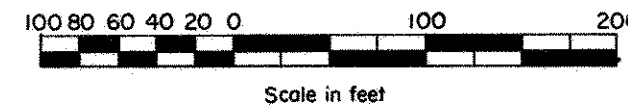


KARTH LAKE HILLS

SCALE: 1 inch = 100 feet



CITY OF ARDEN HILLS
RAMSEY COUNTY, MINNESOTA

CHARLES O. GEORGI COMPANY
CIVIL ENGINEERING & LAND SURVEYING

o Denotes Iron Pipe Monument.
All distances are to hundredths of a foot;
thus 110 denotes 110.00 feet.
All distances on curves are arc lengths
East line of NE 1/4 of Section 22, T 30N,
R 23W, is assumed as bearing North.
Elevations are per City of Arden Hills and
U.S.G.S. datum.
B.M. = 964.51 Top of hydrant East side of
Lexington Ave. 350'± South of Amble Drive.

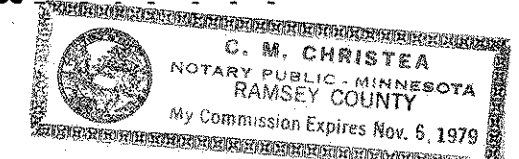
I, Charles O. Georgi, hereby certify that I have surveyed and platted the property described in the dedication of this plat as KARTH LAKE HILLS; that this plat is a correct representation of said survey; that all distances are correctly shown on the plat; that all monuments have been correctly placed in the ground as shown; that the outside boundary lines are correctly designated on the plat; and there are no wet lands, easements or public highways other than as shown thereon.

Charles O. Georgi
Registered Land Surveyor
Minnesota Registration No. 3960

State of Minnesota } s. s.
County of Ramsey }

The Surveyor's certificate was subscribed and sworn to before me,
a Notary Public, this 14th day of October, 1977.

C. M. Christea
Notary Public, Ramsey County, Minnesota
My Commission Expires



Approved and accepted by the City Council of Arden Hills, Minnesota,
this 27th day of October, 1977.

Arden Hills Mayor
Mayor
Charlotte McFlesh
Clerk

No delinquent taxes and transfer entered this 2nd day of November, 1977.

Low McKenna - Director By *P. Lucey* - Deputy
Department of Property Taxation

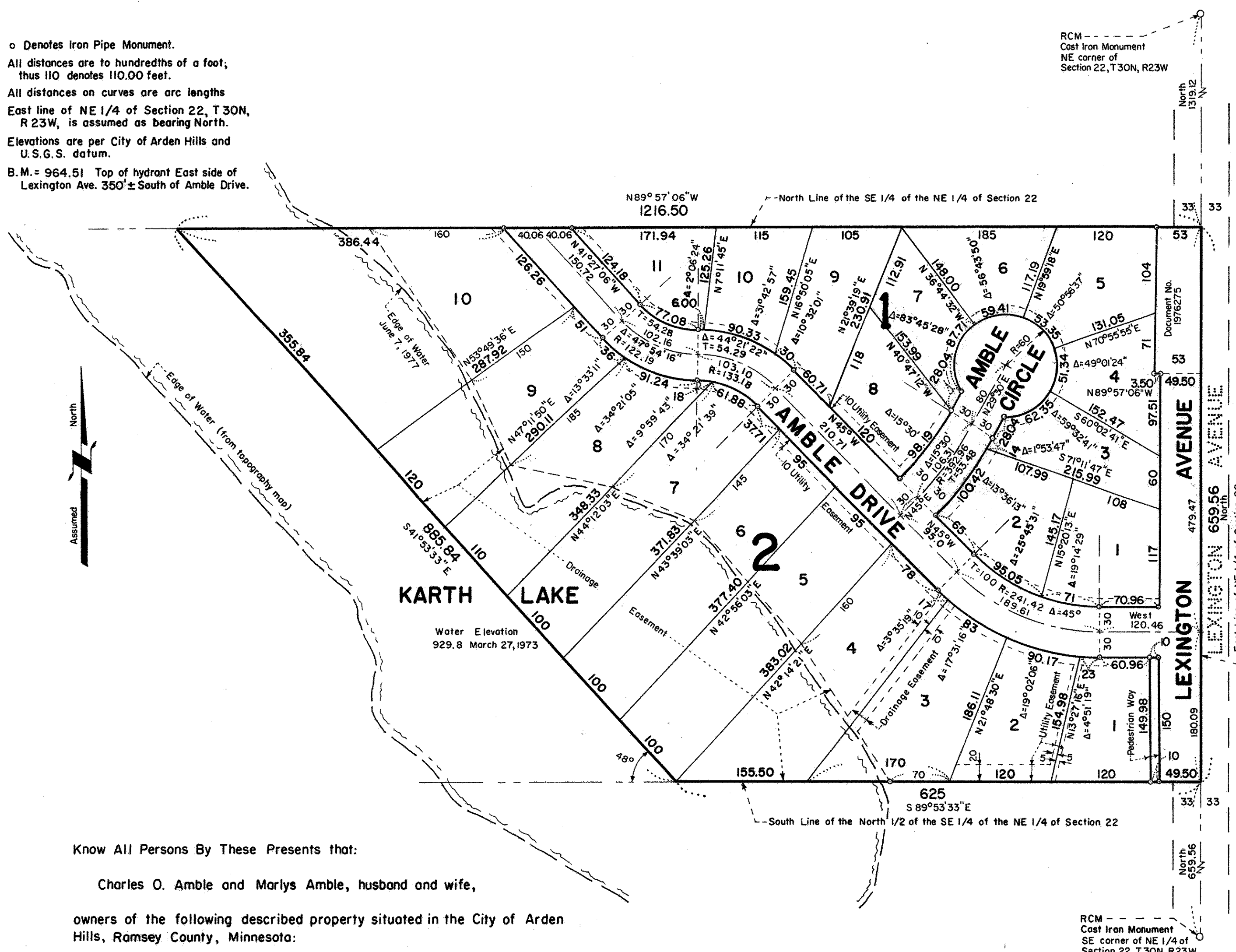
County Recorder, County of Ramsey, State of Minnesota
I hereby certify that this plat of KARTH LAKE HILLS was filed
in this office this _____ day of _____, 1977 at
_____ o'clock _____ M. and was filed in Book _____ of Plats,
Page _____ and that the copies were compared with the Official
Plat and found to be true and correct copies thereof.

Robert T. Gibbons, County Recorder

By _____ Deputy

Pursuant to Chapter 7, Minnesota Laws of 1976, this plat has been
approved this _____ day of _____, 1977.

By *F. R. Kuidera*
F. R. KUIDERA
Acting Ramsey County Surveyor



Know All Persons By These Presents that:

Charles O. Amble and Marlys Amble, husband and wife,

owners of the following described property situated in the City of Arden Hills, Ramsey County, Minnesota:

Subject to Lexington Avenue, all that part of the North 1/2 of the SE 1/4 of the NE 1/4 of Section 22, T 30N, R 23W, lying Northeastly of the following described line: beginning at a point on the South line of the North 1/2 of the SE 1/4 of the NE 1/4 of said Section 22, distant 625 feet West of the Southeast corner thereof, thence Northwestly by a deflection angle of 48° to the right from said South line to a point on the North line of said North 1/2 and there terminating, Ramsey County, Minnesota.

State of Minnesota } s. s.
County of Ramsey }

The foregoing instrument was acknowledged before me this 14th day of October, 1977 by Charles O. Amble and Marlys Amble, husband and wife.

John F. Sains
Notary Public, Ramsey County, Minnesota
My Commission Expires _____

Have caused the same to be surveyed, platted and known as KARTH LAKE HILLS and do hereby dedicate to the public for public use forever the avenue, drive, circle, pedestrian way, and utility and drainage easements as shown on the plat.

Have hereunto set our hands this 14th day of October, 1977.

Signed:

Charles O. Amble
Charles O. Amble
Marlys Amble
Marlys Amble