

CENTRAL VILLAGE ADDITION NO. 3

CITY OF SAINT PAUL
RAMSEY COUNTY, MINNESOTA

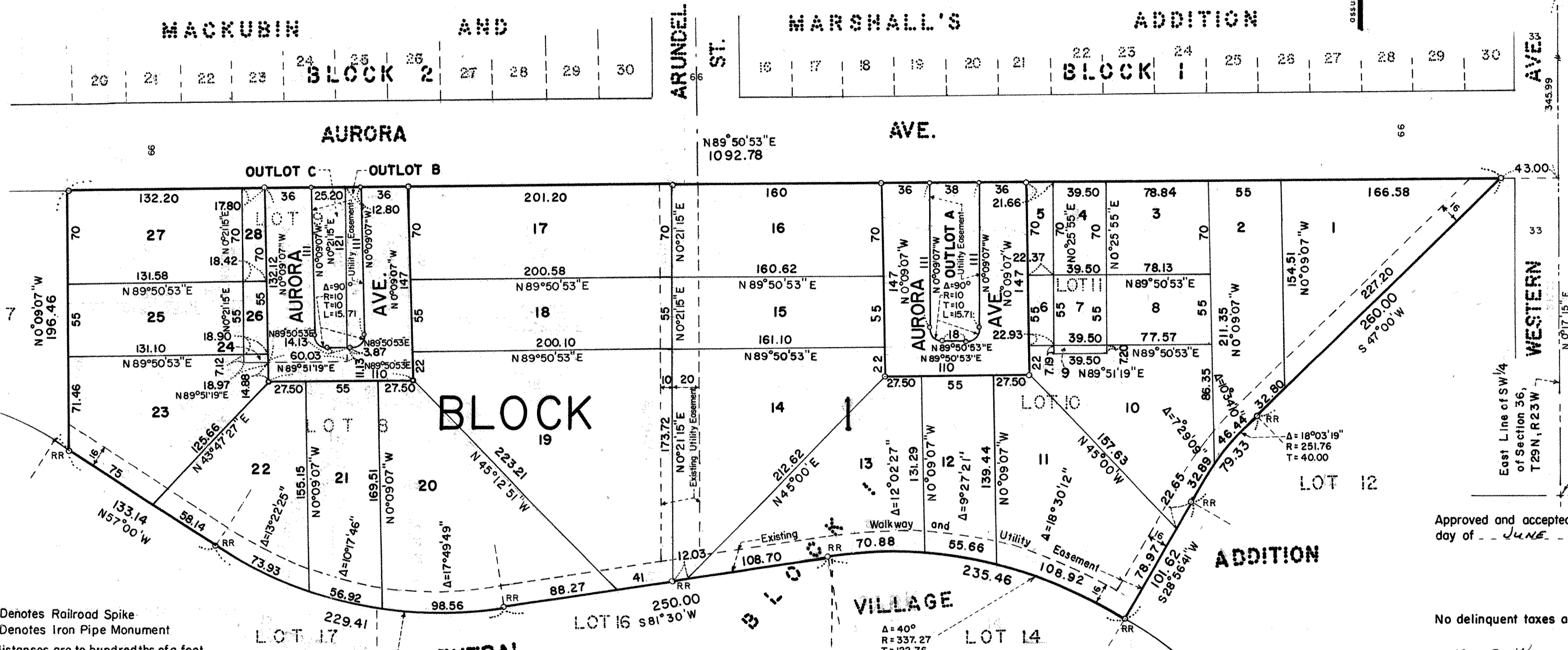
SCALE: 1 inch = 60 feet



CHARLES O. GEORGI COMPANY
CIVIL ENGINEERING & LAND SURVEYING



Center of Section
Section 36, T 29N R 23W
Point on Manhole



RR Denotes Railroad Spike
o Denotes Iron Pipe Monument
All distances are to hundredths of a foot,
thus 110 denotes 110.00 feet.
All distances on curves are arc lengths.
Bearings are on an assumed datum.
Existing easements were dedicated in
Central Village Addition.

Know All Persons By These Presents that:
Housing and Redevelopment Authority of the City of Saint Paul, Minnesota, a Minnesota corporation, owner,

of the following described property situated in the City of Saint Paul, Ramsey County, Minnesota:
Lots 8, 9, 10 and 11, Block 1, Central Village Addition.
Have caused the same to be surveyed, platted and known as CENTRAL VILLAGE ADDITION NO. 3,
and do hereby dedicate to the public for public use forever the avenue and utility easements as shown on
the plat.

Have hereunto set our hands and seal this 19th day of May, 1977.
Signed: Housing and Redevelopment Authority of the City of Saint Paul, Minnesota, a Minnesota corporation
[Signature]
Name: *[Signature]*
Title: *[Signature]*

State of Minnesota } s. s.
County of Ramsey }
The foregoing instrument was acknowledged before me this 19th day of
May, 1977, by *[Signature]* its
Chairman and by *[Signature]* its
Commissioner of Housing and Redevelopment Authority of
the City of Saint Paul, Minnesota, a Minnesota corporation, on behalf of
the corporation.
[Signature]
BARBARA HOUGHTLIN
Notary Public, Ramsey Co., MN
My Commission Expires
July 10, 1983

I, Charles O. Georgi, hereby certify that I have surveyed and platted
the property described in the dedication of this plat as CENTRAL VILLAGE
ADDITION NO. 3; that this plat is a correct representation of said survey;
that all distances are correctly shown on the plat; that all monuments have
been correctly placed in the ground as shown; that the outside boundary
lines are correctly designated on the plat; and there are no wet lands,
easements, or public highways other than as shown thereon.
[Signature]
Charles O. Georgi
Registered Land Surveyor
Minnesota Registration No. 3960

State of Minnesota } s. s.
County of Ramsey }
The Surveyor's certificate was subscribed and sworn to before me, a
Notary Public, this 9th day of May, 1977.
[Signature]
Notary Public, Ramsey County, Minnesota
My Commission Expires

C. M. CHRISTEA
NOTARY PUBLIC - MINNESOTA
RAMSEY COUNTY
My Commission Expires Nov. 8, 1979

Approved and accepted by the City Council of Saint Paul, Minnesota, this 21st
day of June, 1977.

[Signature]
Clerk

No delinquent taxes and transfer entered this 15th day of July, 1977.

Lawrence Department of Property Taxation Director By: *[Signature]* Deputy

Pursuant to Chapter 7, Minnesota Laws of 1976, this plat has been approved this
25th day of July, 1977.

By: *[Signature]*
Ronald F. Meyer
Acting Ramsey County Surveyor

County Recorder,
Registrar of Titles, County of Ramsey, State of Minnesota. I hereby certify
that this plat of CENTRAL VILLAGE ADDITION NO. 3 was filed in this office
this day of July, 1977, at o'clock M. and was filed
in Book of Plats, page and that the copies were compared with
the Official Plat and found to be true and correct copies thereof.

Robert T. Gibbons
County Recorder Registrar of Titles
By: Deputy