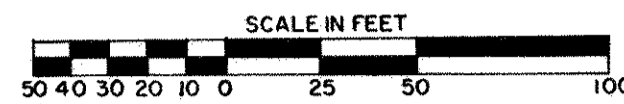


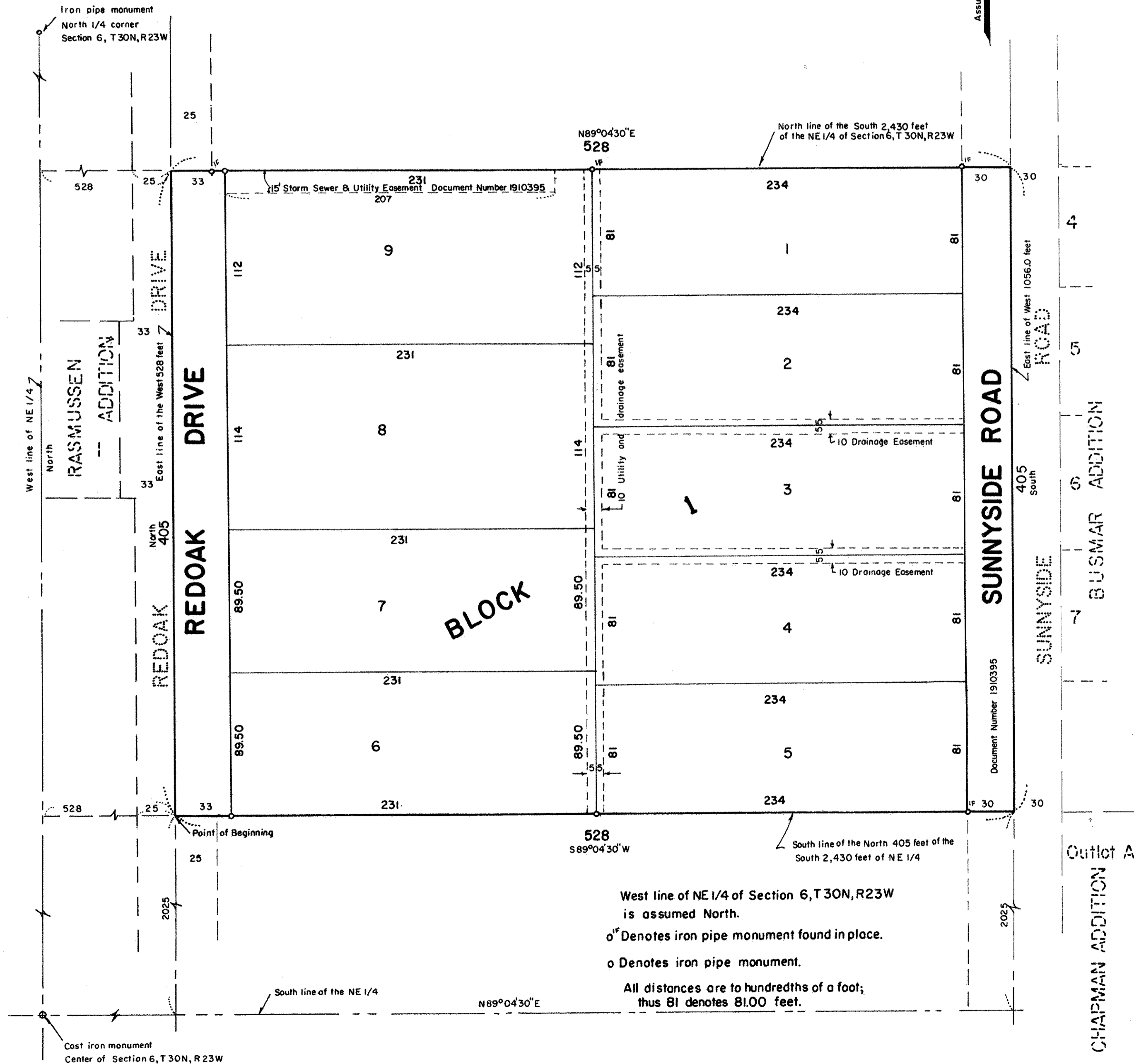
MOE HOMESTEAD ADDITION

SCALE: 1 inch = 50 feet



CITY OF MOUNDS' VIEW
RAMSEY COUNTY, MINNESOTA

CHARLES O. GEORGI COMPANY
CIVIL ENGINEERING & LAND SURVEYING



Know All Persons By These Presents that
 Norbert D. Moe and Ann M. Moe, husband and wife, owners
 of the following described property situated in the City of
 Mounds View, Ramsey County, Minnesota:

That part of the Northeast 1/4 of Section 6, T30, R23 described
 as follows: beginning at a point 528 feet East of the west
 line and 2025 feet North of the South line of said Northeast
 1/4, thence North parallel with the west line of said Northeast
 1/4 a distance of 405 feet, thence East parallel with the South
 line of said Northeast 1/4 a distance of 528 feet, thence South
 parallel with the said west line of said Northeast 1/4 a distance
 of 405 feet, thence west parallel with the South line of said
 Northeast 1/4 to point of beginning, a distance of 528 feet,
 Subject to an easement for road over the west 25 feet
 thereof. Subject to a 5 foot strip easement along the rear
 line for public utility use.

I, Charles O. GEORGI, hereby certify that I have surveyed and
 plotted the property described in the dedication of this plat as
 MOE HOMESTEAD ADDITION; that this plat is a correct
 representation of said survey; that all distances are correctly shown
 on the plat; that all monuments have been correctly placed in the
 ground as shown; that the outside boundary lines are correctly
 designated on the plat; and there are no wet lands, easements or
 public highways other than as shown thereon.

Charles O. Georgi
 Registered Land Surveyor No. 3960

STATE OF MINNESOTA } ss.
 COUNTY OF RAMSEY

The Surveyor's certificate was subscribed and sworn to be-
 fore me, a Notary Public, this 19th day of February,
 1977.

Rolf F. Amlund
 Notary Public, Ramsey County, Minnesota
 My Commission Expires May 24, 1981

Approved and accepted by the City Council of Mounds View, Minnesota,
 this 29th day of March, 1977.

Have caused the same to be surveyed, plotted and known as
 MOE HOMESTEAD ADDITION and do hereby dedicate to the public
 for public use forever the Drive, Road, drainage and utility easements
 as shown on the plat.

Have hereunto set our hands this 18 day of MARCH, 1977.

Signed:
Norbert D. Moe
 Norbert D. Moe
Ann M. Moe
 Ann M. Moe

John E. Fisher Mayor
Mark Achen Clerk

No delinquent taxes transfer entered this 12th day of
 April, 1977.

Louise Kenna Director
 Department of Property Taxation
 By *M. Welcher* Deputy

County Recorder, County of Ramsey, State of Minnesota
 I hereby certify that this plat of MOE HOMESTEAD ADDITION
 was filed in this office this 12th day of April, 1977
 at 10 o'clock A.M. and was filed in Book of Plots, page
 and that the copies were compared with the Official
 Plat and found to be true and correct copies thereof.

Robert T. Gibbons
 County Recorder
 By _____ Deputy

Pursuant to Chapter 7, Minnesota Laws of 1976, this plat has been
 approved this 12th day of April, 1977.

By *Ronald F. Meyer*
 Ronald F. Meyer
 Acting County Surveyor

STATE OF MINNESOTA } ss.
 COUNTY OF RAMSEY
 The foregoing instrument was acknowledged before me this
 18 day of MARCH, 1977 by Norbert D. Moe and
 Ann M. Moe, husband and wife.

Martha C. Zabel
 Notary Public, Ramsey County, Minnesota
 My Commission Expires JAN 29 1979