

WIDGER ADDITION

KNOW ALL PERSONS BY THESE PRESENTS that Francis W. Widger and Esther M. Widger, husband and wife, owners, and The Farmers and Mechanics Savings Bank of Minneapolis, a Minnesota corporation, mortgagee, of the following described property situated in the City of Mounds View, Ramsey County, Minnesota:

That part of the Northeast Quarter of Section 6, Township 30 North, Range 23 West of the Fourth Principal Meridian described as follows: Beginning at a point 528 feet East of the West line and 2754 feet North of the South line of said Northeast quarter; thence easterly parallel with the South line of said Northeast Quarter a distance of 528 feet; thence southerly parallel with the West line of said Northeast Quarter a distance of 162 feet; thence westerly parallel with the South line of said Northeast Quarter a distance of 528 feet; thence northerly parallel with the West line of said Northeast Quarter a distance of 162 feet to the point of beginning and there terminating.

Have caused the same to be surveyed, platted and known as WIDGER ADDITION and do hereby dedicate to the public for the public use forever the drainage and utility easements, Redoak Drive and Sunnyside Road, as shown on the plat. In witness whereof said Francis W. Widger and Esther M. Widger, husband and wife, have caused these presents to be signed this 9th day of December, 1976; and in witness whereof said The Farmers and Mechanics Savings Bank of Minneapolis have caused these presents to be signed by its proper officers and its corporate seal to be hereunto affixed this 10th day of December, 1976.

SIGNED:

Francis W. Widger
Francis W. Widger

Esther M. Widger
Esther M. Widger

THE FARMERS AND MECHANICS SAVINGS BANK OF MINNEAPOLIS

Howard N. Groven its Secretary

Duncan G. Barr its Legal Officer

State of Minnesota)
County of Hennepin)

The foregoing instrument was acknowledged before me this 9th day of December 1976, by Francis W. Widger, and Esther M. Widger, husband and wife.

James M. Winter
Notary Public, Hennepin County, Minnesota
My Commission Expires March 12, 1980

State of Minnesota)
County of Hennepin)

The foregoing instrument was acknowledged before me this 20th day of January 1977, by Howard N. Groven, its Secretary and Duncan G. Barr, its Legal Officer, officers of The Farmers and Mechanics Savings Bank of Minneapolis, a Minnesota Corporation, on behalf of the corporation.

Janice M. Schneider
Notary Public, Hennepin County, Minnesota
My Commission Expires June 6, 1982

I, Ron Murphy, hereby certify that I have surveyed and platted the property described in the dedication of this plat as WIDGER ADDITION; that this plat is a correct representation of said survey; that all distances are correctly shown on the plat; that all monuments have been correctly placed in the ground as shown; that the outside boundary lines are correctly designated on the plat; and there are no wet lands, easements or public highways other than as shown thereon.

State of Minnesota)
County of Hennepin)

Ron Murphy
Minnesota Registration No. 10832

The Surveyor's certificate was subscribed and sworn to before me, a Notary Public, this 8th day of December, 1976.

James M. Winter
Notary Public, Hennepin County, Minnesota
My Commission Expires March 12, 1980

Approved and accepted by the City Council of the City of Mounds View, Minnesota, this 13th day of December, 1976.

John E. Pichler Mayor
Markelcher Clerk

No delinquent taxes and transfer entered this 21st day of January, 1977.

Lawrence J. Denna, Director By V. Ford, Deputy
Department of Property Taxation

Pursuant to Chapter 7, Minnesota Laws of 1976, this plat has been approved this 21st day of January, 1977.

BY Ronald F. Meyer
Ronald F. Meyer
Acting Ramsey County Surveyor

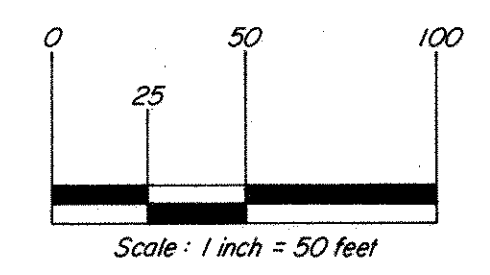
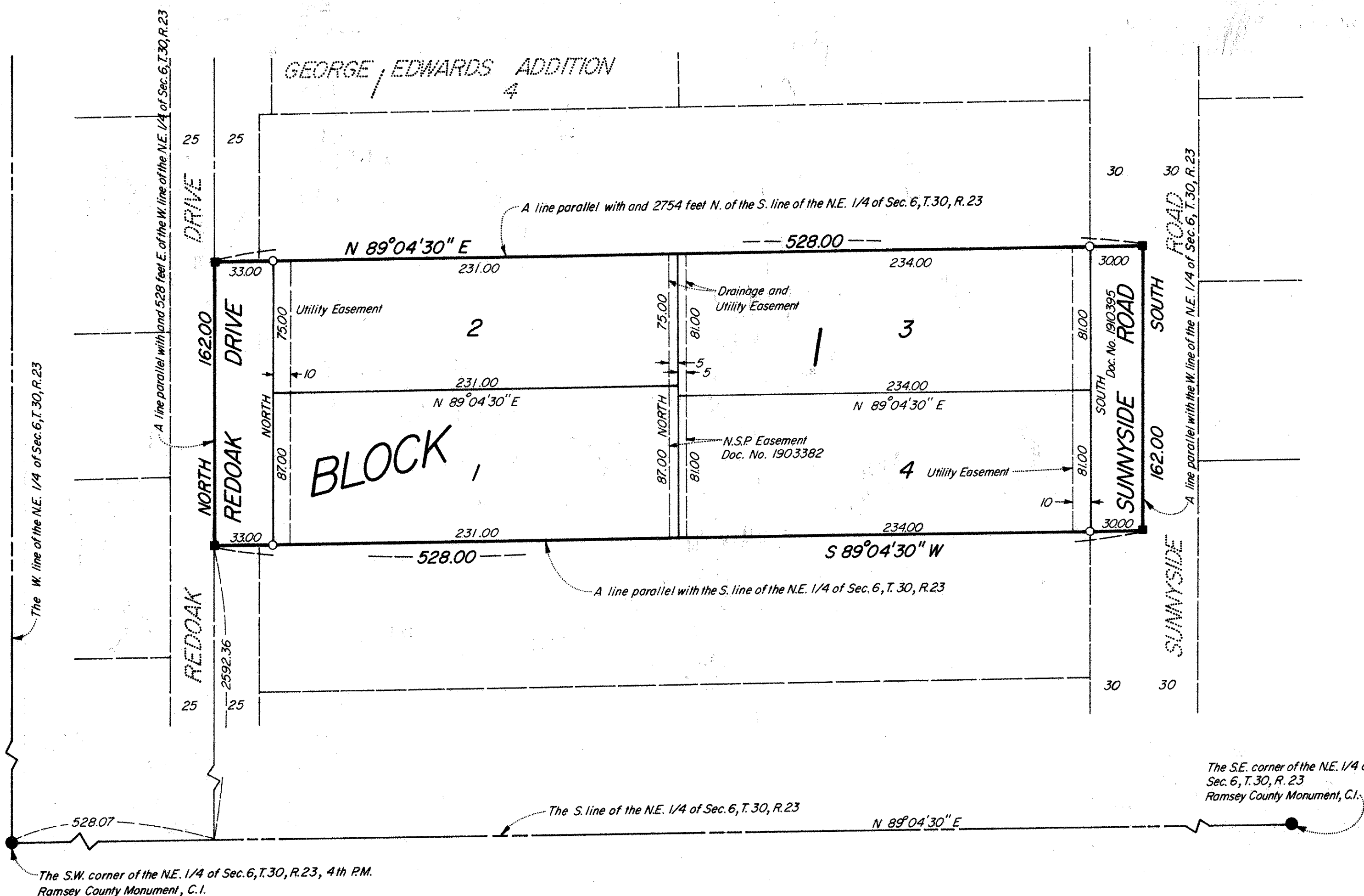
County Recorder, County of Ramsey, State of Minnesota

I hereby certify that this plat of WIDGER ADDITION was filed in this office this _____ day of _____, 19____ at _____ o'clock _____ M. and was filed in Book _____ of Plats, Page _____ and that the copies were compared with the Official Plat and found to be true and correct copies thereof.

Robert T. Gibbons County Recorder Deputy

Abstract #195865

Widger Addition



Bearings are on an assumed datum
 ■ Denotes P.K. nail set
 ○ Denotes iron monument set and marked RLS 10832



CONSULTING ENGINEERS & LAND SURVEYORS