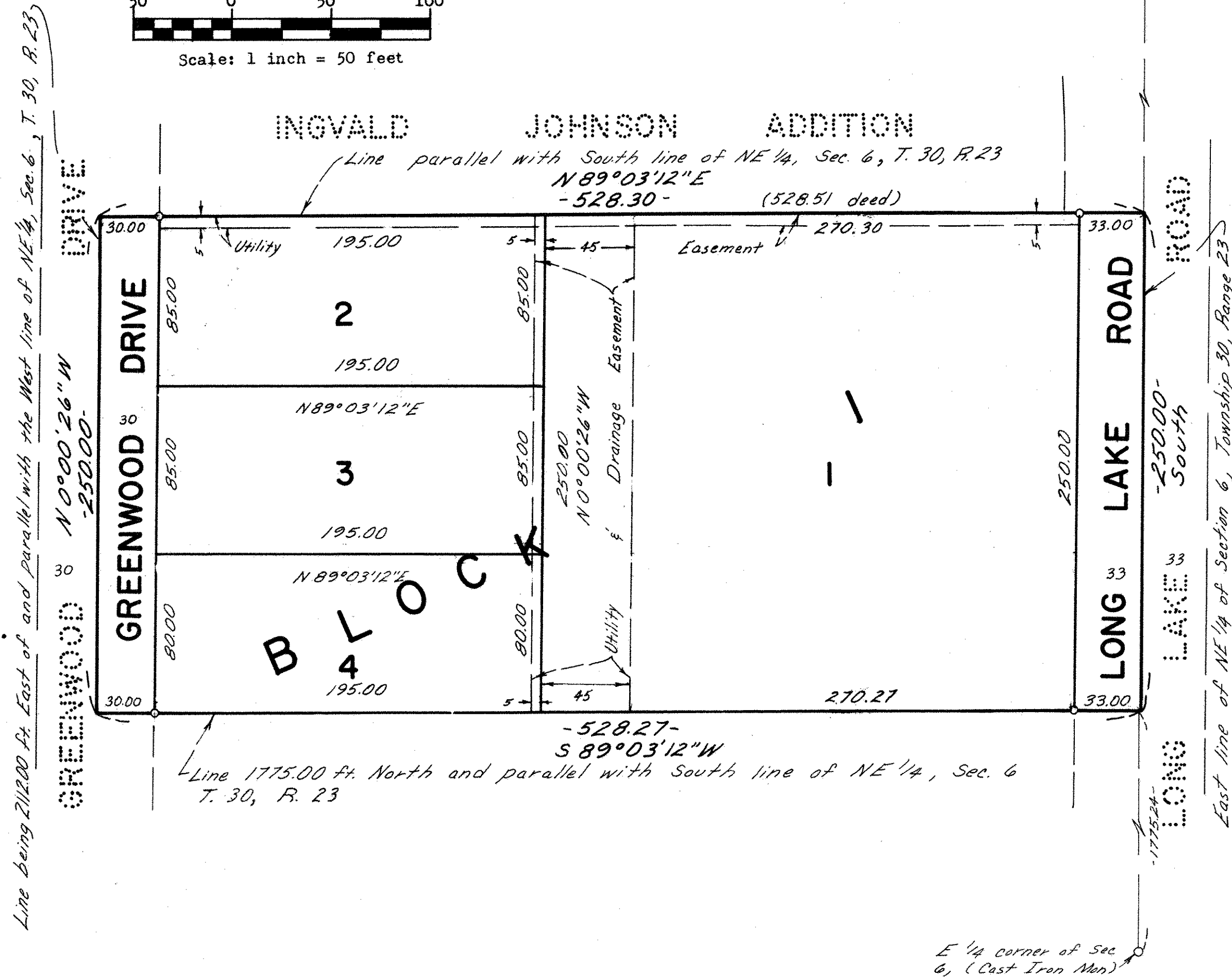
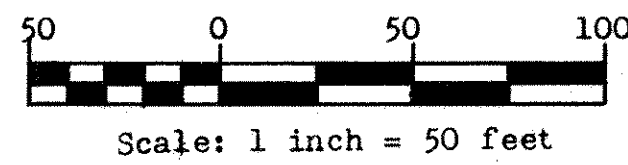


# CHARLES HERMANN ADDITION

**LOT SURVEYS CO.  
LAND SURVEYORS**



Bearings shown are on an assumed datum, August, 1976

- o Indicates Iron Monument Found
- Indicates Iron Monument Set

COUNTY RECORDER, COUNTY OF RAMSEY, STATE OF MINNESOTA

I hereby certify that this plat of CHARLES HERMANN ADDITION was filed in this office this day of \_\_\_\_\_, 197\_, at \_\_\_\_\_ o'clock, M. and was filed in Book \_\_\_\_\_ of Plats, Page \_\_\_\_\_ and that the copies were compared with the Official Plat and found to be true and correct copies thereof.

ROBERT T. GIBBONS, County Recorder

By \_\_\_\_\_  
DEPUTY

Know All Persons By These Presents that Charles J. Hermann and Beth D. Hermann, his wife, owners of the following described property situated in the City of Mounds View, Ramsey County, Minnesota:

That part of the Northeast 1/4 of Section 6, Township 30, Range 23, described as follows: Beginning at a point 2112.00 feet East of the West line and 1775.00 feet North of the South line of the said Northeast 1/4; thence North parallel with the West line of said Northeast 1/4, distance of 250.00 feet; thence East parallel with the South line of said Northeast 1/4 to the East line of said Northeast 1/4, a distance of 528.51 feet, more or less; thence South along the East line of said Northeast 1/4, a distance of 250.00 feet; thence West parallel with the South line of said Northeast 1/4 to the point of beginning.

Have caused the same to be surveyed, platted and known as CHARLES HERMANN ADDITION and do hereby dedicate to the public for public use forever the Drive and Road and utility and drainage easements as shown on the plat. In witness whereof said Charles J. Hermann and Beth D. Hermann, his wife, have hereunto set their hands and seals this 2nd day of December A.D., 1976.

Signed:

Charles J. Hermann Beth D. Hermann  
Charles J. Hermann Beth D. Hermann

State of Minnesota  
County of Anoka The foregoing instrument was acknowledged before me this 2nd day of DECEMBER A.D., 1976, by Charles J. Hermann and Beth D. Hermann, his wife.

Martha C. Zabel  
Notary Public, Anoka County, Minn.  
My Commission Expires JANUARY 29-1979

I, Raymond A. Prasch, hereby certify that I have surveyed and platted the property described in the dedication of this plat as CHARLES HERMANN ADDITION; that this plat is a correct representation of said survey; that all distances are correctly shown on the plat; that all monuments have been correctly placed in the ground as shown; that the outside boundary lines are correctly designated on the plat; and there are no wet lands, easements or public highways other than as shown thereon.

Raymond A. Prasch  
Minnesota Registration No. 6743

State of Minnesota  
County of Hennepin The Surveyor's certificate was subscribed and sworn to before me, a Notary Public, this 9th day of NOVEMBER A.D., 1976.

Gerald T. Coyne  
Gerald T. Coyne, Notary Public, Hennepin County, Minn.  
My Commission Expires September 14, 1983

Approved and accepted by the City Council of the City of Mounds View, Minnesota, this 20th day of December 1976.

John E. Piskos Mark Achen  
Mayor Clerk

No delinquent taxes and transfer entered this 17th day of January, 1977.

Law McZanna Director By V. Mars Deputy  
Department of Property Taxation

Pursuant to Chapter 7, Minnesota Laws of 1976, this plat has been approved this 17th day of January 1977.

By Ronald F. Meyer  
Ronald F. Meyer, Acting County Surveyor