

PAYNE ADDITION

KNOW ALL PERSONS BY THESE PRESENTS that G.P. Construction, Inc., a Minnesota corporation, and Donald L. Sohm and Jeanette M. Sohm, husband and wife, owners of the following described properties situated in the City of Mounds View, Ramsey County, Minnesota:

Lot 45 except the North 320 feet thereof, Auditor's Subdivision No. 89, Ramsey County, Minnesota, and

The South 100 feet of the North 320 feet of Lot 45, Auditor's Subdivision No. 89, Ramsey County, Minnesota.

Have caused the same to be surveyed, platted, and known as PAYNE ADDITION and do hereby dedicate to the public for public use forever the utility and drainage easements, road and drive as shown on the plat. In witness whereof said G.P. Construction, Inc., a Minnesota corporation, has caused these presents to be signed by its president this 14th day of DECEMBER, 1976. In witness whereof said Donald L. Sohm and Jeanette M. Sohm, husband and wife have caused these presents to be signed this 16th day of DECEMBER, 1976.

SIGNED:

G.P. CONSTRUCTION, INC.

George Payne
George Payne, President

Donald L. Sohm
Donald L. Sohm

Jeanette M. Sohm
Jeanette M. Sohm

State of Minnesota)
County of Hennepin)

The foregoing instrument was acknowledged before me this 14th day of December, 1976, by George Payne, president of G.P. Construction, Inc., a Minnesota corporation, on behalf of the corporation.

James M. Winter
Notary Public, Hennepin County, Minnesota
My Commission Expires March 12, 1980

State of Minnesota)
County of Hennepin)

The foregoing instrument was acknowledged before me this 16th day of Dec, 1976, by Donald L. Sohm, and Jeanette M. Sohm, husband and wife.

Allen T. Quella
Notary Public, Hennepin County, Minnesota
My Commission Expires DEC 12, 1978

I, Ron Murphy, hereby certify that I have surveyed and platted the property described in the dedication of this plat as PAYNE ADDITION; that this plat is a correct representation of said survey; that all distances are correctly shown on the plat; that all monuments have been correctly placed in the ground as shown; that the outside boundary lines are correctly designated on the plat; and there are no wet lands, easements or public highways other than as shown thereon.

State of Minnesota)
County of Hennepin)

Ron Murphy
Minnesota Registration No. 10832

The Surveyor's certificate was subscribed and sworn to before me, a Notary Public, this 13th day of December, 1976.

James M. Winter
Notary Public, Hennepin County, Minnesota
My Commission Expires March 12, 1980

Approved and accepted by the City Council of the City of Mounds View, Minnesota, this 20th day of December, 1976.

John E. Piskar Mayor
Mark Achen Clerk

No delinquent taxes and transfer entered this 23rd day of December, 1976.

Law Mc Kenna, Director By ry Odlund, Deputy
Department of Property Taxation

Pursuant to Chapter 7, Minnesota Laws of 1976, this plat has been approved this 23rd day of December, 1976.

By Ronald F. Meyer
Ronald F. Meyer
Acting Ramsey County Surveyor

Registrar of Titles, County of Ramsey, State of Minnesota

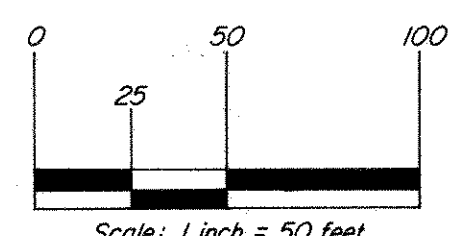
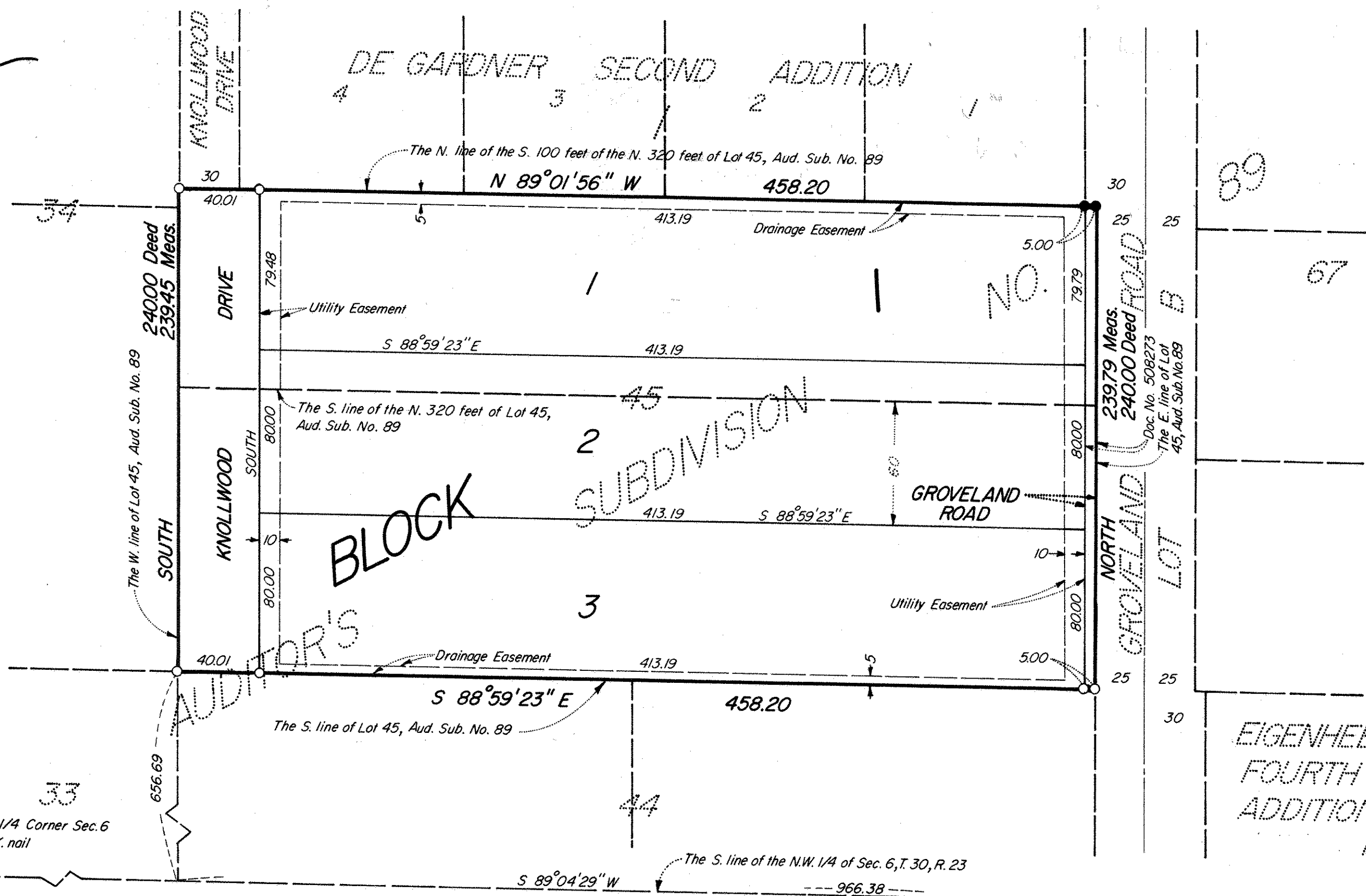
I hereby certify that this plat of PAYNE ADDITION was filed in this office this _____ day of _____, 19__ at _____ o'clock _____ M. and was filed in Book _____ of Plats, Page _____ and that the copies were compared with the Official Plat and found to be true and correct copies thereof.

Robert T. Gibbons
Registrar of Titles

BY _____
Deputy

Torrens # 633607

Payne Addition



Bearings are on an assumed datum
● Denotes iron monument found
○ Denotes iron monument set and marked R.L.S. 10832

COMSTOCK & DAVIS, INC.

CONSULTING ENGINEERS & LAND SURVEYORS