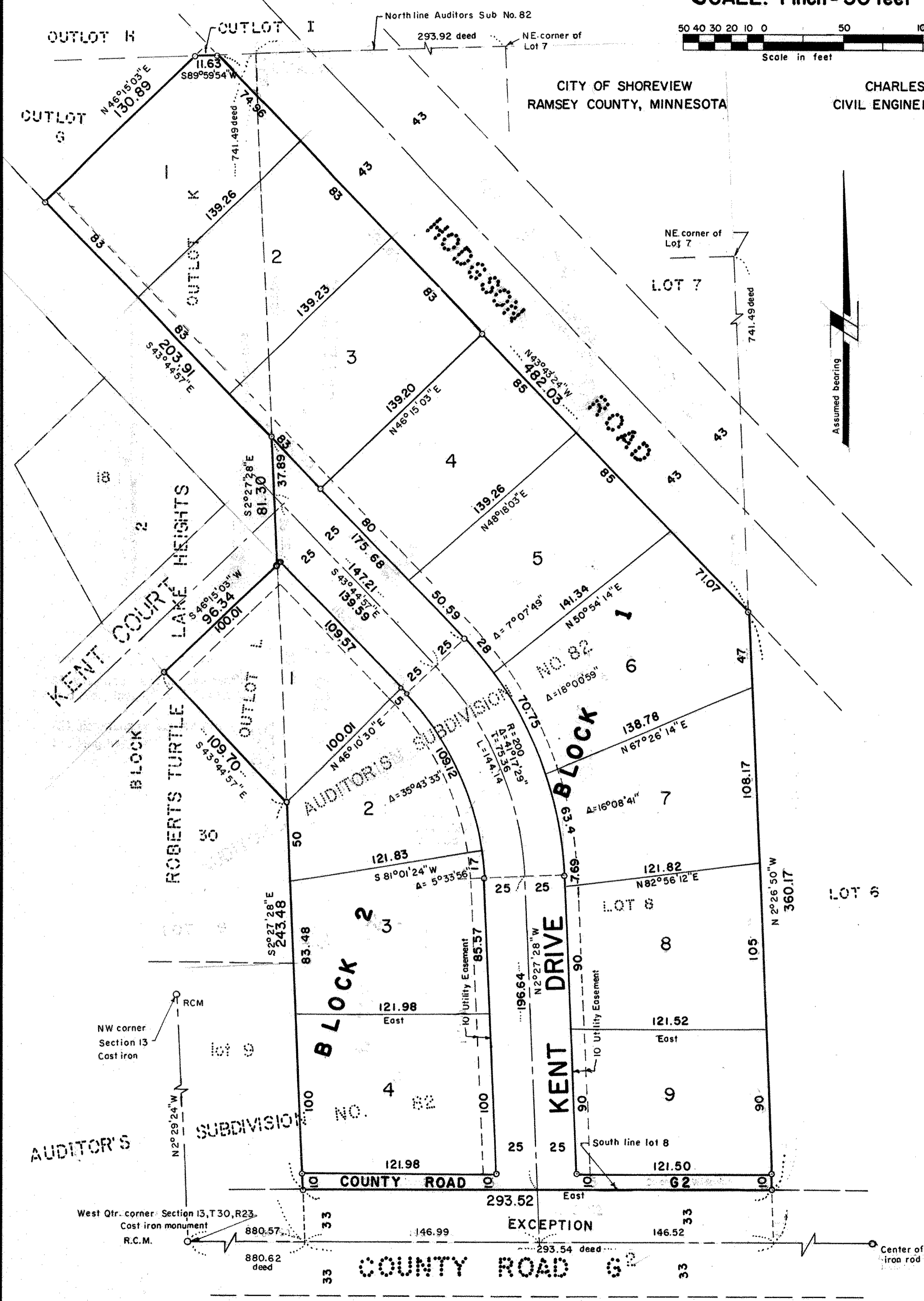


# FORSBERG TURTLE LAKE HEIGHTS

SCALE: 1 inch = 50 feet



○ Denotes iron pipe monuments  
 All distances are to hundredths of a foot  
 Thus 90 equals 90.00 feet;  
 All distances on curves are arc lengths

CITY OF SHOREVIEW  
 RAMSEY COUNTY, MINNESOTA  
 CHARLES O. GEORGI COMPANY  
 CIVIL ENGINEERING & LAND SURVEYING

Know All Persons By These Presents that  
 Oakcrest Homes Inc., a Minnesota corporation  
 Walter N. Coppersmith and Ann C. Coppersmith, husband and wife  
 owners of the following described property situated in the City of Shoreview,  
 Ramsey County, Minnesota: Outlots Kand L, Roberts Turtle Lake Heights and,  
 All that tract or parcel of land described as follows lying Southwesterly  
 of the Southwesterly right of way of Hodgson Road: Beginning at a  
 point 880.62 feet E. of the SW corner of NW1/4 of Sec.13, T30, R23  
 thence E. 293.54 feet, thence N. 741.49 feet, thence W. 293.92 feet,  
 thence S. 741.49 feet to the point of beginning, except the S. 33 feet  
 thereof  
 Have caused the same to be surveyed, platted and known as FORSBERG  
 TURTLE LAKE HEIGHTS and do hereby dedicate to the public for public use  
 forever the road, drive and utility easements as shown.

Have hereunto set our hands this 18 day of Aug, 1976  
 Signed:

*Walter N. Coppersmith*  
 Walter N. Coppersmith  
*Ann C. Coppersmith*  
 Ann C. Coppersmith

Have hereunto set our hands and seals this 22 day of Sept, 1976  
 Signed: Oakcrest Homes Inc., a Minnesota corporation.

*Steven D. Roberts*  
 Name Title  
*Marie A. Roberts*  
 Name Title

STATE OF MINNESOTA } S.S.  
 COUNTY OF RAMSEY }  
 The foregoing instrument was acknowledged before me this 18th  
 day of August, 1976 by Walter N. Coppersmith and Ann C. Coppersmith  
 husband and wife.

*Joseph M. Hanson*  
 Notary Public, Ramsey County, Minnesota  
 My Commission Expires

I, Charles O. Georgi, hereby certify that I have surveyed and platted the  
 property described in the dedication of this plat as FORSBERG TURTLE LAKE  
 HEIGHTS; that this plat is a correct representation of said survey; that all  
 distances are correctly shown on the plat; that all monuments have been correctly  
 placed in the ground as shown; that the outside boundary lines are correctly  
 designated on the plat; and there are no wet lands, easements or public  
 highways other than as shown thereon

*Charles O. Georgi*  
 Registered Land Surveyor No. 3960

STATE OF MINNESOTA } SS  
 COUNTY OF RAMSEY }

The Surveyor's certificate was subscribed and sworn to before me, a  
 Notary Public, this 11th day of August, 1976

*C. W. Christ*  
 Notary Public, Ramsey County, Minnesota  
 My Commission Expires 11/6/79

Approved and accepted by the City Council of Shoreview, Minnesota, this  
Fourth day of October, 1976

*James R. Olson* Mayor  
*Angela J. DeLeon* Clerk

No delinquent taxes and transfer entered this 6th day of  
October, 1976.

*Sonja McKenna* Director By *P. Loney* Deputy  
 Department of Property Taxation

Pursuant to Chapter 7, Minnesota Laws of 1976, this plat has been approved  
 this 7th day of October, 1976

By *Ronald F. Meyer*  
 Ronald F. Meyer  
 Acting County Surveyor

County Recorder, County of Ramsey, State of Minnesota  
 I hereby certify that this plat of FORSBERG TURTLE LAKE HEIGHTS was  
 filed in this office this 11th day of October, 1976 at o'clock A.M.  
 and was filed in Book 1446 of Plats, page 538 and that the copies were  
 compared with the Official Plat and found to be true correct copies thereof.

*Robert T. Gibbons*  
 County Recorder

By \_\_\_\_\_ Deputy

STATE OF MINNESOTA } S.S.  
 COUNTY OF RAMSEY }

The foregoing instrument was acknowledged before me this 22  
 day of Sept, 1976 by *Steven D. Roberts* its agent  
 and by *Marie A. Roberts* its Secretary of Oakcrest Homes  
 Inc., a Minnesota corporation on behalf of the corporation.

*Lucille J. Siebert*  
 Notary Public, Ramsey County, Minnesota  
 My commission expires

