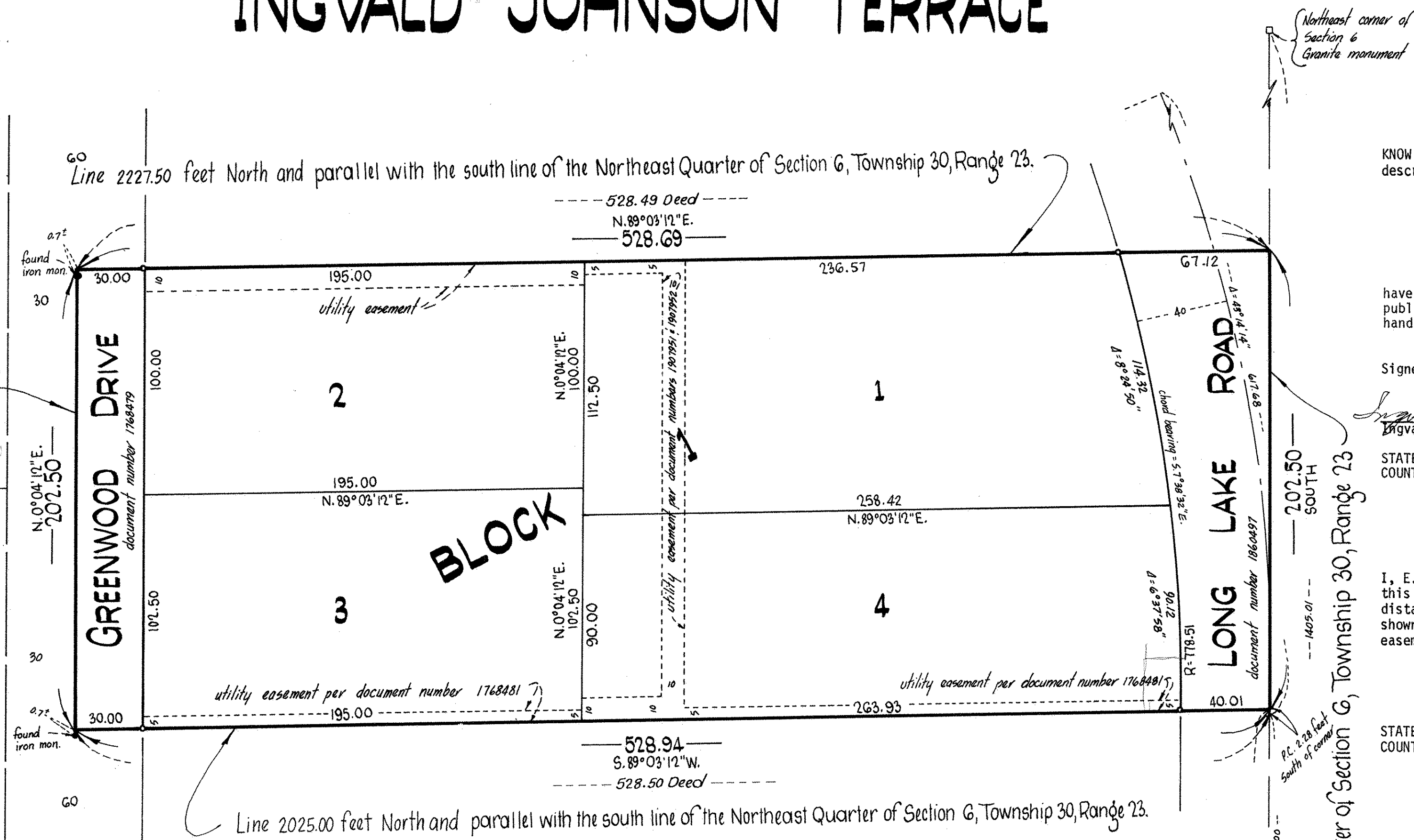


INGVALD JOHNSON TERRACE

KORSGARDEN ADDITION
Line being 211.2 feet East of and parallel with the west line of the Northeast Quarter of Section 6.

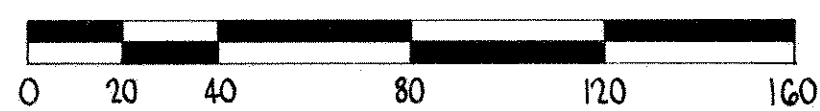


Bearings shown are on an assumed datum

- o Denotes iron monument marked by Minnesota Registration No. 3795

OCTOBER, 1975

Scale: 1 inch = 40 feet



GRAPHIC SCALE IN FEET

UBURBAN ENGINEERING, INC.
— Engineers —
— Surveyors —

KNOW ALL PERSONS BY THESE PRESENTS that Ingvald R. Johnson and Alma O. Johnson, his wife, owners of the following described property situated in the City of Moundsview, Ramsey County, Minnesota:
That part of the Northeast Quarter of Section 6, Township 30, Range 23, described as follows:
Beginning at a point 2112.00 feet East of the west line and 2025.00 feet North of the south line of said Northeast Quarter; thence North and parallel with the west line of said Northeast Quarter, a distance of 202.50 feet; thence East, parallel with the south line of said Northeast Quarter, a distance of 528.49 feet; thence South, along the east line of said Northeast Quarter, 202.50 feet; thence West, parallel with the south line of said Northeast Quarter, a distance of 528.50 feet to the point of beginning;
have caused the same to be surveyed, platted and known as INGVALD JOHNSON TERRACE and do hereby dedicated to the public for public use forever the Drive, Road and utility easements as shown on the plat. Have hereunto set their hands this 3rd day of DECEMBER, 1975.

Signed:

Ingvald R. Johnson
Ingvald R. Johnson
Alma O. Johnson
Alma O. Johnson

STATE OF MINNESOTA The foregoing instrument was acknowledged before me this 3rd day of December, COUNTY OF ANOKA 1975 by Ingvald R. Johnson and Alma O. Johnson, his wife.

Marietta L. Zuehlke
Notary Public, ANOKA County, Minnesota
My Commission Expires MARIETTA L. ZUEHLKE
Notary Public, Anoka County, Minn.
My Commission Expires, April 19, 1977

I, E. A. Rathbun, hereby certify that I have surveyed and platted the property described in the dedication of this plat as INGVALD JOHNSON TERRACE; that this plat is a correct representation of said survey; that all distances are correctly shown on the plat; that all monuments have been correctly placed in the ground as shown; that the outside boundary lines are correctly designated on the plat; and that there are no wet lands, easements or public highways other than as shown thereon.

E. A. Rathbun
E. A. Rathbun, Land Surveyor
Minnesota Registration No. 3795

STATE OF MINNESOTA The foregoing instrument was acknowledged before me this 3rd day of December, COUNTY OF ANOKA 1975 by E. A. Rathbun, Land Surveyor.

Marietta L. Zuehlke
Notary Public, ANOKA County, Minnesota
My Commission Expires MARIETTA L. ZUEHLKE
Notary Public, Anoka County, Minn.
My Commission Expires, April 19, 1977

Approved and accepted by the City Council of Moundsview, Ramsey County, Minnesota, this 22nd day of December, 1975.

CITY COUNCIL OF MOUNDSVIEW, MINNESOTA
Gerald H. Johnson Mayor
Mark Achen Clerk

No delinquent taxes and transfer entered this 7th day of January, 1976.

Law McKenna Director By *y. Oatman* Deputy
Department of Property Taxation

Accepted and approved this 8th day of JANUARY, 1976.

Ronald F. Meyer *Patricia A. Shetty* *Raymond E. Ryan*
Plat Commission

Ronald F. Meyer
City Engineer of St. Paul

REGISTER OF DEEDS
REGISTRAR OF TITLES, COUNTY OF RAMSEY, STATE OF MINNESOTA

I hereby certify that this plat of INGVALD JOHNSON TERRACE was filed in this office this _____ day of _____, 19____ at _____ o'clock _____ M. and was filed in Book _____ of Plats, Page _____ and that the copies were compared with the Official Plat and found to be true and correct copies thereof.

By _____ Deputy
Robert T. Gibbons
Register of Deeds - Registrar of Titles