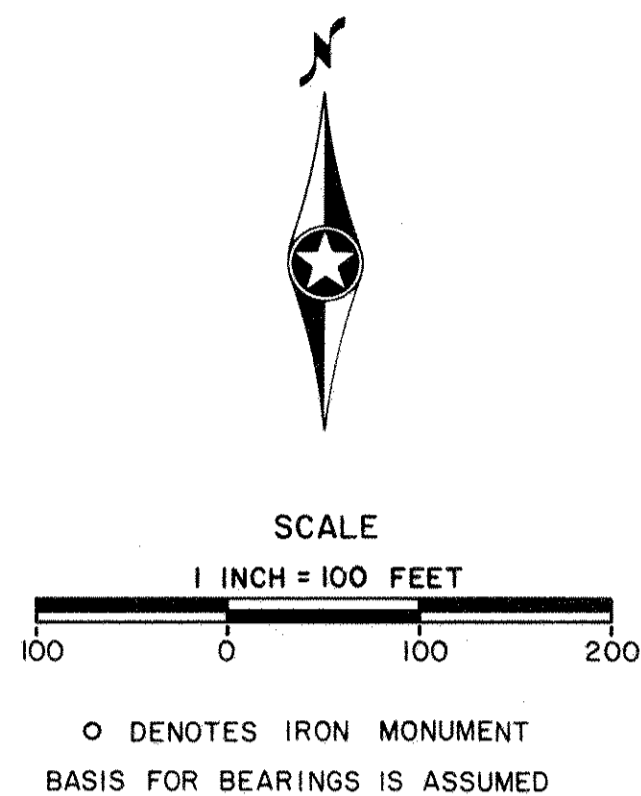


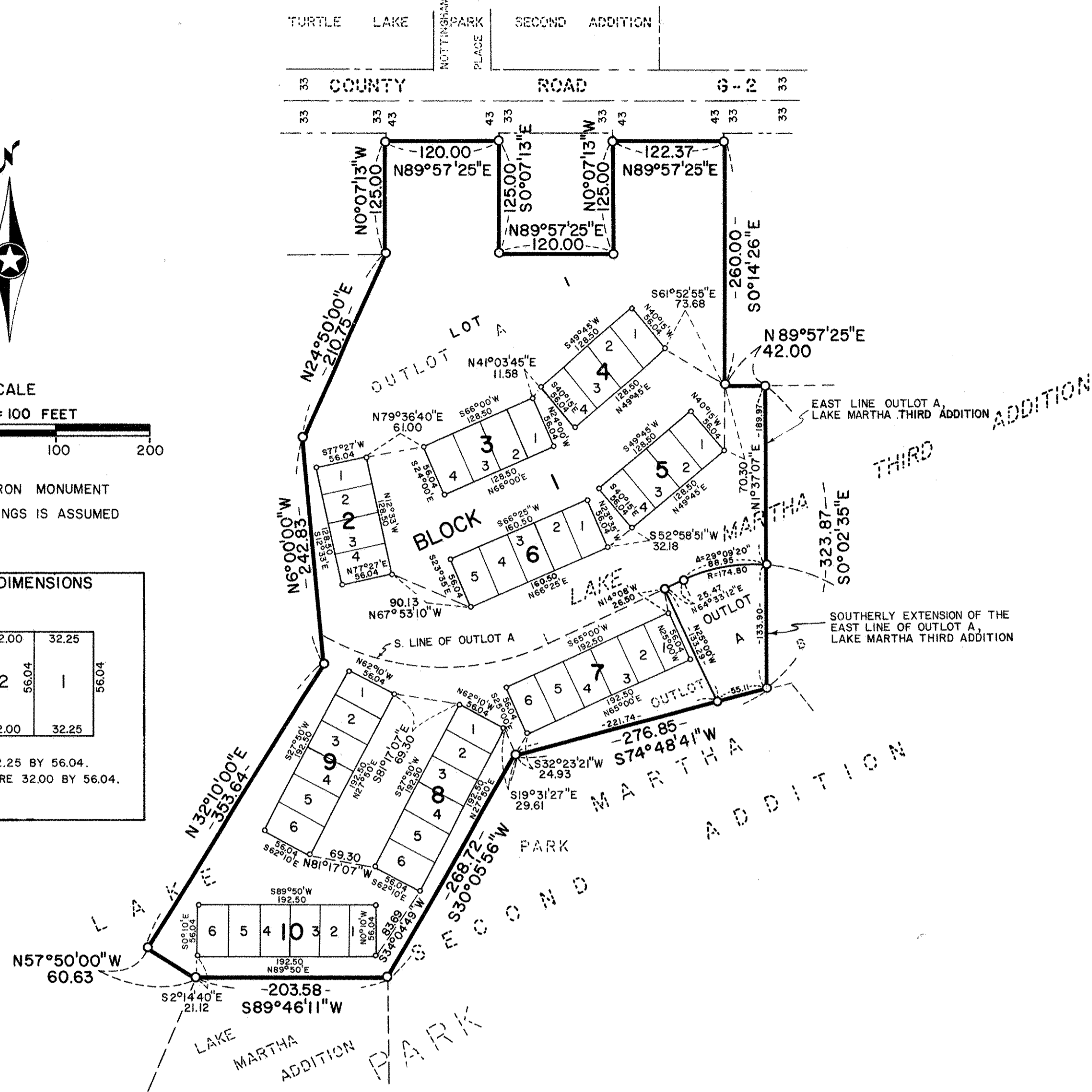
LAKE MARTHA FOURTH ADDITION



TYPICAL LOT DIMENSIONS

| | | | | | |
|-------|-------|-------|-------|-------|-------|
| 56.04 | 32.25 | 32.00 | 32.00 | 32.25 | 56.04 |
| | 4 | 3 | 2 | 1 | |
| | 32.25 | 32.00 | 32.00 | 32.25 | |

ALL END LOTS ARE 32.25 BY 56.04.
ALL INTERIOR LOTS ARE 32.00 BY 56.04.



KNOW ALL PERSONS BY THESE PRESENTS: that Ted Glasrud Associates, Inc., a Minnesota Corporation, owner, and The First National Bank of Saint Paul, a United States Corporation, mortgagee, of the following described property, situated in the City of Shoreview, Ramsey County, Minnesota.

OUTLOT A, LAKE MARTHA THIRD ADDITION, according to the recorded plat thereof.

and

That part of OUTLOT B, LAKE MARTHA SECOND ADDITION, according to the recorded plat thereof, lying westerly of the southerly extension of the east line of OUTLOT A, LAKE MARTHA THIRD ADDITION.

Have caused the same to be surveyed, platted and known as LAKE MARTHA FOURTH ADDITION.

In Witness Whereof Ted Glasrud Associates, Inc., has caused these presents to be signed by its proper officers and its corporate seal to be hereunto affixed this 9th day of SEPTEMBER, 1975, and The First National Bank of Saint Paul has caused these present to be signed by its proper officers and its corporate seal to be hereunto affixed this 9th day of SEPTEMBER, 1975.

Signed:
Theodore Glasrud
 Theodore Glasrud - President
Theodore G. Glasrud
 Theodore G. Glasrud - Vice President

THE FIRST NATIONAL BANK OF SAINT PAUL
E. J. Wilson
 Title: VICE PRESIDENT
Robert J. Munn
 Title: ASST VICE PRESIDENT

State of Minnesota)
 County of Ramsey) The foregoing instrument was acknowledged before me this 9th day of SEPTEMBER, 1975, by Theodore Glasrud, President, and Theodore G. Glasrud, Vice President of Ted Glasrud Associates, Inc., a Minnesota Corporation, on behalf of the corporation.

J. M. Dack Notary Public, RAMSEY County, Minnesota
 My Commission Expires: August 15, 1981

State of Minnesota)
 County of Ramsey) The foregoing instrument was acknowledged before me this 9th day of SEP, 1975, by E. J. Wilson, VICE PRESIDENT and ROBERT J. MUNN, ASST VICE PRESIDENT of The First National Bank of Saint Paul, a United States Corporation, on behalf of the corporation.

M. Sue Lind Notary Public, Ramsey County, Minnesota
 My Commission Expires: May 17, 1980

I, James E. Boerhave, hereby certify that I have surveyed and platted the property described in the dedication of this plat as LAKE MARTHA FOURTH ADDITION; that this plat is a correct representation of said survey; that all distances are correctly shown on the plat; that all monuments have been correctly placed in the ground as shown; that the outside boundary lines are correctly designated on the plat; and there are no wet lands, easements or public highways other than as shown thereon.

James E. Boerhave
 Minnesota Registration No. 7095

STATE OF MINNESOTA)
 COUNTY OF HENNEPIN) The Surveyor's certificate was subscribed and sworn to before me, a Notary Public, this 3rd day of SEPTEMBER, 1975.

Lynd A. Larson
 Notary Public, HENNEPIN County, Minnesota
 My Commission Expires APRIL 20, 1982

CITY OF SHOREVIEW
 Approved and accepted by the City Council of Shoreview, Minnesota, this 8 day of SEPT, 1975.

Wesley Farrell Mayor
Ray T. Dinkum Clerk

No delinquent taxes and transfer entered this 11th day of September, 1975.

Lawrence Kenne Director By P. Lucey Deputy
 Department of Property Taxation

Accepted and approved this 8th day of DECEMBER, A.D., 1975.

Ronald T. Munn
Walter A. Hestley
 Plat Commission
Orlando L. Hultman City Engineer of St. Paul

REGISTER OF DEEDS

Registrar of Titles, County of Ramsey, State of Minnesota

I hereby certify that this plat of LAKE MARTHA FOURTH ADDITION was filed in this office this 9th day of SEPTEMBER, 1975, at 10:00 o'clock A.M. and was filed in Book 1187 of Plats, Page 56 and that the copies were compared with the Official Plat and found to be true and correct copies thereof.

Robert T. Gibbons
 Register of Deeds Registrar of Titles

By _____ Deputy

Terrans # 4187 56