

# HILLSBOROUGH

## VILLAGE OF ROSEVILLE

### RAMSEY COUNTY, MINNESOTA

SCALE 1"=100'

CHARLES O. GEORGI COMPANY  
CIVIL ENGINEERING & LAND SURVEYING

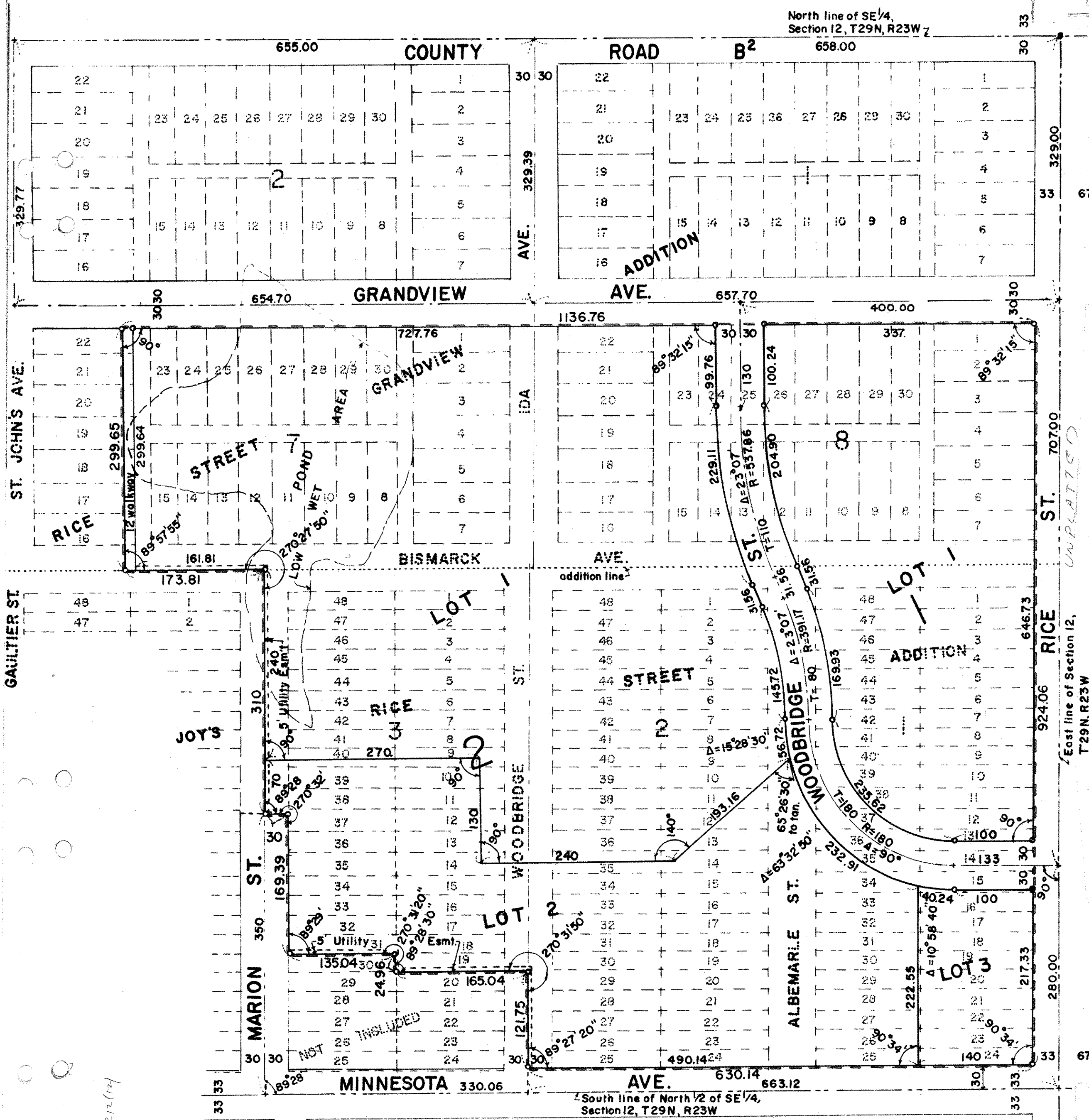
I hereby certify that I have surveyed the property described on this plat as HILLSBOROUGH that this plat is a correct representation of said survey and all distances are correctly shown; that the monuments are correctly placed in the ground as shown, that the outside boundary lines are correctly designated on the plat and that there are no wet public highways, or easements on or across said plat other than as shown thereon.

State of Minnesota )  
County of Ramsey } s.s.

On this 15<sup>th</sup> day of February, A.D. 1971 before me the undersigned personally appeared Charles O. Georgi to me known to be the person described in and who executed the foregoing instrument and acknowledge that he executed the same as his free act and deed.

*Charles O. Georgi*  
Registered Land Surveyor  
Minnesota No. 3960

*Rolf F. Cimland*  
Notary Public, Ramsey County, Minn.  
My Commission Expires May 28, 1974



This is to certify that we Ban-Con, Inc, a Minnesota Corporation, Fee owner and Mortgagor and Bankers Mortgage Corporation, a Minnesota Corporation, Mortgagee are Owners of:

All that part of Joy's Rice Street Addition to St. Paul, Ramsey County, Minn. as follows: Lots 1 thru 48, Block 1, except the South 3 feet of said lots 24 and 25 taken for widening Minnesota Ave. Lots 1 thru 48, Block 2, except the South 3 feet of said lots 24 and 25 taken for widening Minnesota Ave. Lots 1 thru 19, and lots 31 thru 48, Block 3. All that part of Rice Street Grandview Addition, Ramsey County, Minn. as follows: Lots 1 thru 15, Lots 23 thru 30 and the East 12.0 feet of Lots 16 thru 22, and the adjoining vacated alleys in said Block 7. Lots 1 thru 30, Block 8, and the adjoining vacated alleys in said Block 8. Street Vacations: (Vacation of the following described streets or portions of streets in Rice Street Grandview Addition and Joy's Rice Street Addition) Albemarle St: That portion of Albemarle Street lying between the North line of Minnesota Ave. and the South line of Bismarck Ave. Woodbridge St: That portion of the East 1/2 of Woodbridge Street lying between the North line of Minnesota Ave. and the South line of Bismarck Ave. and that portion of the West 1/2 of Woodbridge Street lying between the South line of lot 19, Block 3, Joy's Rice Street Addition extended Easterly, to the South line of Bismarck Ave. Marion St: That portion of the East 1/2 of Marion Street lying between the South line of Bismarck Ave. and a line parallel to and 350 feet North of the centerline of Minnesota Ave. Ida Ave: That portion of Ida Ave. lying between the South line of Grandview Ave. and the North line of Bismarck Ave. Bismarck Ave: That portion of the North 1/2 of Bismarck Ave. lying between the West line of Rice St. and a line 12 feet West of the East line of lots 16 thru 22, Block 7, Rice Street Grandview Addition extended Southerly. That portion of the South 1/2 of Bismarck Ave lying between the West line of Rice St. and the centerline of Marion St.

have caused the same to be surveyed and platted and hereafter known as Hillsborough, as shown by this plat, and hereby dedicate to the public and for public use forever all streets, walkways, and easements as shown hereon. Witness our hands and seal this 2<sup>nd</sup> day of April, A.D. 1971.

In the presence of:  
*Edward Bradley*  
*Douglas Strong*  
*Shawn S. Kelly*  
*Douglas Strong*

Seal  
Ban-Con, Inc. \_\_\_\_\_ Pres.  
\_\_\_\_\_  
Sec./Treas.  
Bankers Mortgage Corporation \_\_\_\_\_ Pres.  
Mortgagee \_\_\_\_\_ Sec./Treas.

Accepted and approved this 12<sup>th</sup> day of July, A.D. 1971  
*Walter A. Bentley*  
*Roger Wilson* } Plat Commission  
*Phyllis Clarke*  
*Joseph Conway* } Commissioner of Public Works

Accepted and approved by the village Council of the Village of Roseville on this 17<sup>th</sup> day of January, A.D. 1971  
*Donald Mall* Mayor  
*Burt M. Raymond* Attest: Clerk

State of Minnesota )  
County of Ramsey } s.s.  
On this 7<sup>th</sup> day of April, A.D. 1971 before me appeared *Hans T. Hagen*, and *L. M. Ehrenmann* who each being duly sworn did say that they are respectively the President and Sec. / Treas. of the Ban-Con, Inc., a Minnesota Corporation, the corporation named in the foregoing instrument and the seal affixed to same instrument is the corporate seal of said corporation and that said instrument was signed and sealed in behalf of said corporation by authority of its Board of Directors, and said *Hans T. Hagen, St.* and said *L. M. Ehrenmann* acknowledged said instrument to be the free act and deed of said corporation.

*M. O. Ruder*  
Notary Public, Ramsey County, Minn.  
My Commission expires October 15, 1974  
State of Minnesota )  
County of Ramsey } s.s.  
On this 7<sup>th</sup> day of April, A.D. 1971 before me appeared *Hans T. Hagen* and *L. M. Ehrenmann* who each being duly sworn did say that they are respectively the Vice President and Secretary of Bankers Mortgage Corporation, a Minnesota Corporation, the corporation named in the foregoing instrument and the seal affixed to same instrument is the corporate seal of said corporation and that said instrument was signed and sealed in behalf of said corporation by authority of its Board of Directors, and said *President* and said *Sec. / Treas.* acknowledged said instrument to be the free act and deed of said corporation.

*M. O. Ruder*  
Notary Public, Ramsey County, Minn.  
My Commission expires October 15, 1974

o Denotes Iron Pipe Monument.  
All distances on curves are arc lengths.  
All distances are to hundredths of a foot, and thus, 140 denotes 140.00 feet.