

# HEATHERWOOD

## VILLAGE OF ROSEVILLE

### RAMSEY COUNTY MINNESOTA

Accepted and approved by the Village Council of the Village of Roseville on this 24<sup>th</sup> day of March 1969.

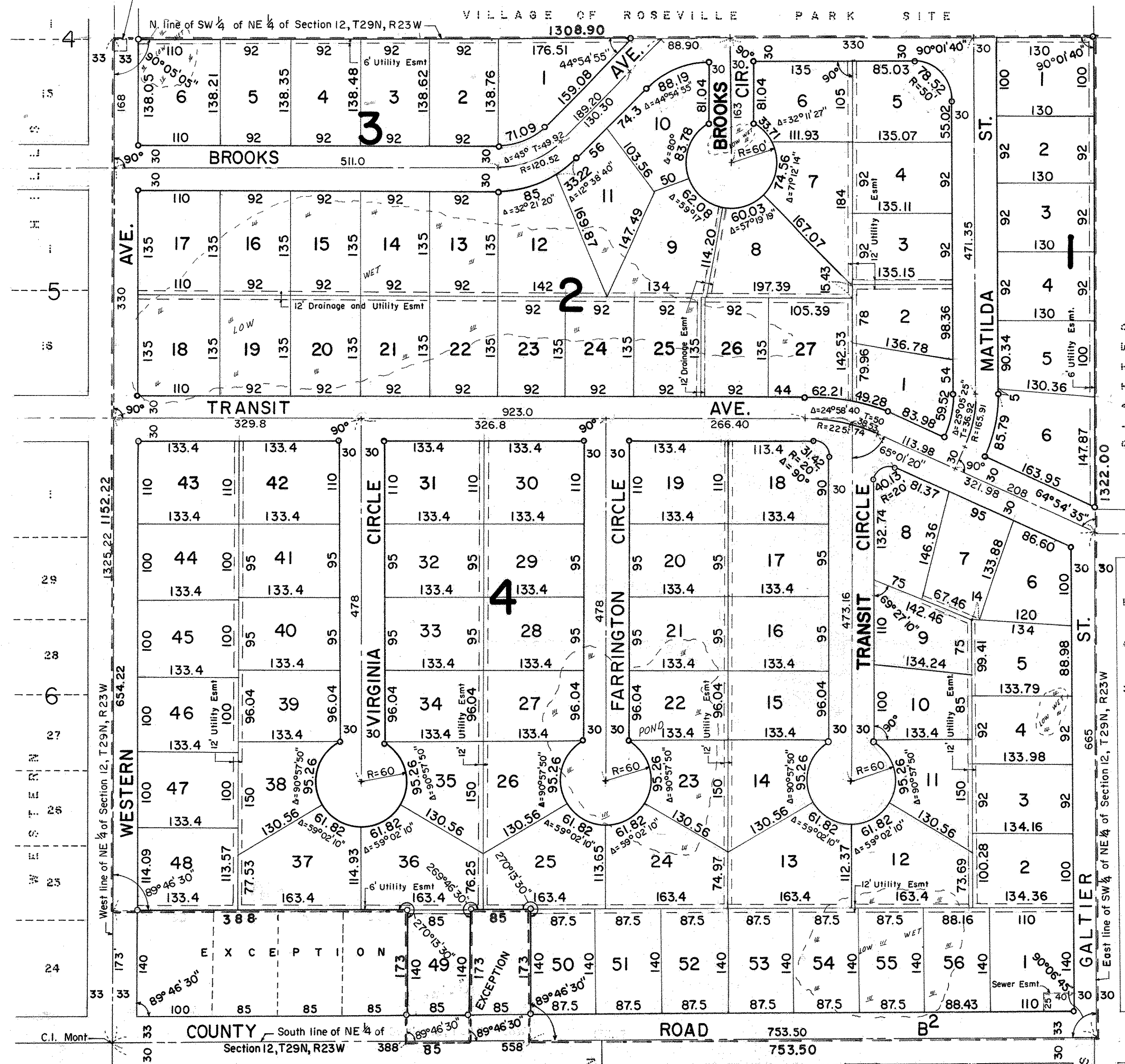
*A. Donald Mall* Mayor  
*Joseph M. Hills* Attest Clerk

I hereby certify that I have surveyed the property described on this plat as Heatherwood; that this plat is a correct representation of said survey and all distances are correctly shown; that the monuments are correctly placed in the ground as shown; that the outside boundary lines are correctly designated on the plat and that there are no wet lands, public highways, or easements on or across said plat other than as shown thereon.

*Charles O. Georgi*  
Registered Land Surveyor  
Minnesota No. 3960

SCALE 1"=100'

CHARLES O. GEORGI COMPANY  
CIVIL ENGINEERING & LAND SURVEYING



State of Minnesota,  
County of Ramsey, s.s.  
On this 24<sup>th</sup> day of March A.D. 1969 before me the undersigned personally appeared Charles O. Georgi to me known to be the person described in and who executed the foregoing instrument and acknowledged that he executed the same as his free act and deed.

*Robert J. ...*  
Notary Public, Ramsey County, Minn.  
My Commission expires May 23, 1974

This is to certify that we  
Bon-Con. Inc. a Minnesota Corporation, Fee owner and Mortgagor and  
Bankers Mortgage Corporation, a Minnesota Corporation, Mortgagee are  
Owners of  
The SW 1/4 of NE 1/4 of Section 12, T29N, R23W, except the South 173 feet of the West 388 feet and except the South 173 feet of the East 85 feet of the West 558 feet, thereof.  
Subject to Western Ave., County Road B2, sewer easements of record and Great Lakes Pipe line Co. Easement  
have caused the same to be surveyed and plotted and hereafter known as Heatherwood as shown by this plat, and hereby dedicate to the public and for public use forever all streets, avenues, roads, circles and easements as shown hereon.

Witness our hands this 27<sup>th</sup> day of MARCH A.D. 1969  
In the presence of  
*[Signatures]*  
Bon-Con, Inc. seal  
Bankers Mortgage Corp. seal  
Mortgagee seal

State of Minnesota,  
County of Ramsey, s.s.  
On this 27<sup>th</sup> day of MARCH A.D. 1969 before me appeared Theodore G. Aslund and J. A. WARMAN who each being duly sworn did say that they are respectively the President and Secretary of the Bon-Con. Inc., a Minnesota Corporation, the corporation named in the foregoing instrument and the seal affixed to same instrument is the corporate seal of said corporation and that said instrument was signed and sealed in behalf of said corporation by authority of its Board of Directors, and said Theodore G. Aslund and said J. A. WARMAN acknowledged said instrument to be the free act and deed of said corporation.

*Sanna Mae Larson*  
Notary Public, Ramsey County, Minn.  
My Commission expires May 27, 1975

State of Minnesota,  
County of Ramsey, s.s.  
On this 25<sup>th</sup> day of MARCH A.D. 1969 before me appeared Theodore G. Aslund and J. A. WARMAN who each being duly sworn did say that they are respectively the President and Secretary of Bankers Mortgage Corporation, a Minnesota Corporation, the corporation named in the foregoing instrument and the seal affixed to same instrument is the corporate seal of said corporation and that said instrument was signed and sealed in behalf of said corporation by authority of its Board of Directors, and said Theodore G. Aslund and said J. A. WARMAN acknowledged said instrument to be the free act and deed of said corporation.

*Sanna Mae Larson*  
Notary Public, Ramsey County, Minn.  
My Commission expires May 27, 1975

Accepted and approved this 25<sup>th</sup> day of June A.D. 1969

*Walter J. Bremer*  
*[Signature]*  
Plat Commission  
*Robert J. Peterson*  
Commissioner of Public Works

o Denotes Iron Monument  
All distances on curves are arc lengths.  
12' easement center lines are the lot lines.

Recorded June 29, 1969