

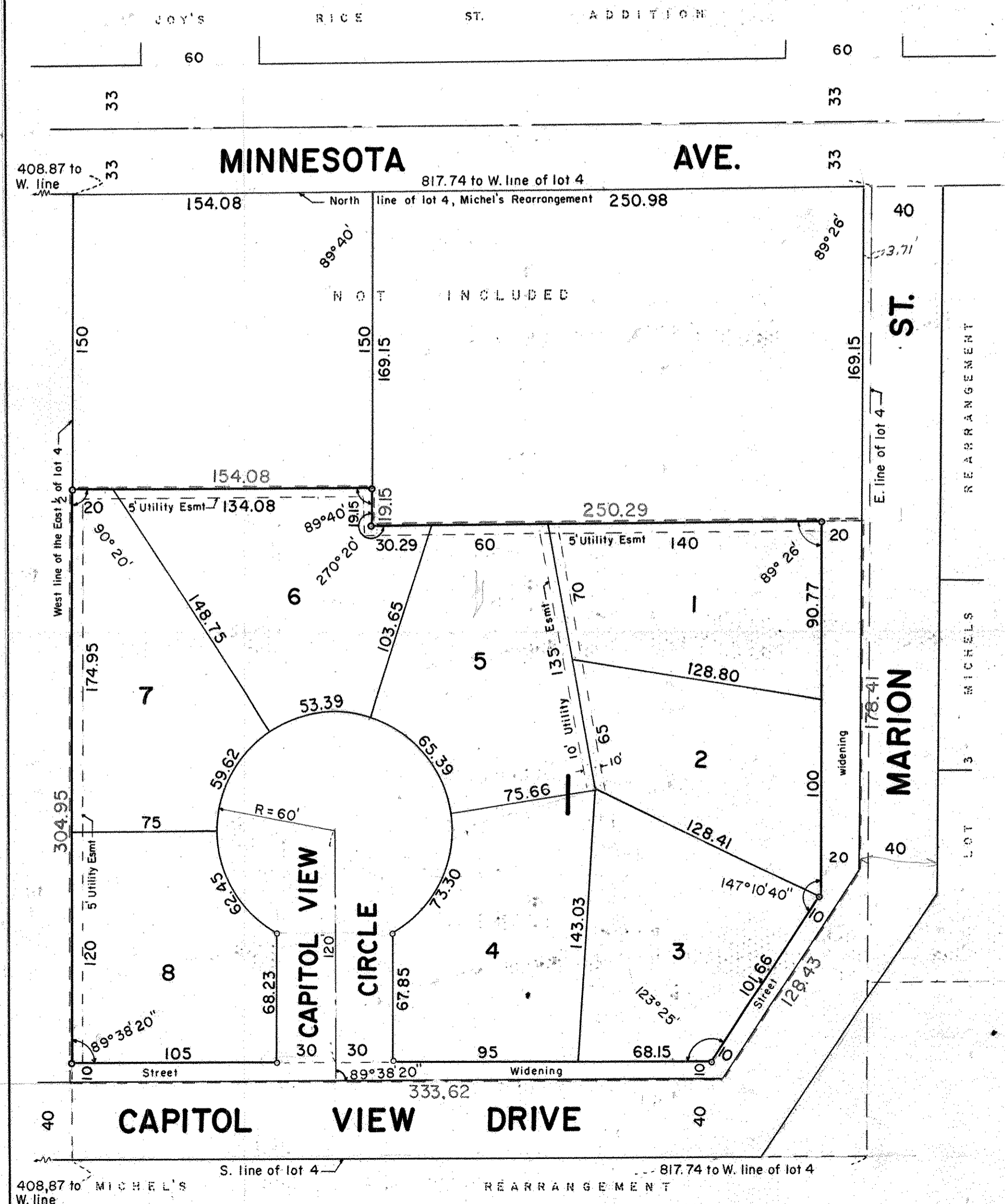
CAPITOL VIEW HILLS

VILLAGE OF ROSEVILLE

RAMSEY COUNTY, MINNESOTA

CHARLES O. GEORGI COMPANY
CIVIL ENGINEERING & LAND SURVEYING

SCALE 1" = 50'



o Denotes Iron Monument
 All Distances on Curves are Arc Lengths.
 Center line of Easements are the lot lines.

State of Minnesota)
 County of Ramsey /s.s.
 On this 17th day of July A.D. 1966 before me the undersigned personally appeared Charles O. Georgi to me known to be the person described in and who executed the foregoing instrument and acknowledged that he executed the same as his free act and deed.

Dorothy LaFavor
 Notary Public, Ramsey County, Minn.
 My Commission expires June 1, 1972.

I hereby certify to having surveyed the property described on this plat as Capitol View Hills and have placed iron monuments on the corners shown and the same is correct. There is no low wet ground nor any traveled road or easement on or across same except as shown.

Charles O. Georgi
 Registered Land Surveyor
 Minnesota Certificate No. 3960

This is to certify that we
 Ban-Con, Inc. a Minnesota Corporation, Fee owner and Mortgagor and
 Bankers Mortgage Corporation, a Minnesota Corporation, Mortgagee are
 Owners of
 The West 1/2 of the East 1/2 of Lot 4 except the West 154.08 feet thereof and the East 1/4 of Lot 4 lying Northwesterly of the North line of Capitol View Drive, Michel's Rearrangement of Lots 9 to 16 of Mocubin and Igleharts Addition of Outlots except the North 169.15 feet thereof.
 Subject to Marion St. and Capitol View Drive.
 Also the West 154.08 feet of the East 1/2 of the East 1/2 of said lot 4 except the North 150 feet thereof.
 have caused the same to be surveyed and plotted and hereafter known as Capitol View Hills as shown by this plat, and hereby dedicate to the public and for public use forever all streets, drives, and easements as shown hereon.

Witness our hands this 22nd day of July A.D. 1966
 In the presence of

John Bruce
Opal M. Young
Cynthia L. Olson

Theodore Glasrud
Donald E. Flo
Donald Schoenbeck
J. A. Warman

Accepted and approved this 1st day of August A.D. 1966

Walter J. Bremer
Steph. Schmitt Plat Commission

Robert P. Jensen Commissioner of Public Works

State of Minnesota)
 County of Ramsey /s.s.
 On this 22nd day of July A.D. 1966 before me appeared Theodore Glasrud and Ronald Flo who each being duly sworn did say that they are respectively the president and Secretary of the Ban-Con, Inc., a Minnesota Corporation, the corporation named in the foregoing instrument and that said instrument was signed in behalf of said corporation by the authority of its Board of Directors and said Theodore Glasrud and Ronald Flo acknowledge said instrument to be the free act and deed of said corporation.

John Bruce
 Notary Public, Ramsey County, Minn.
 My Commission expires 1-6-66

Accepted and approved by the Village Council of the Village of Roseville on this 13 day of June 1966

E. J. Scardoni Mayor
R. J. Teravlund Attest Clerk

State of Minnesota)
 County of Ramsey /s.s.
 On this 22nd day of July A.D. 1966 before me appeared Donald Schoenbeck and J. A. Warman who each being duly sworn did say that they are respectively the Vice President and asst. treas. of Bankers Mortgage Corporation, a Minnesota Corporation, the corporation named in the foregoing instrument and that said instrument was signed in behalf of said corporation by the authority of its Board of Directors and said Donald Schoenbeck and J. A. Warman acknowledge said instrument to be the free act and deed of said corporation.

Donald E. Flo
 Notary Public, Ramsey County, Minn.
 My Commission expires Feb. 4, 1972