

MIN DOT ROW
62-60

PLAT BOUNDARY DATA			
FROM	TO	DISTANCE (FT.)	AZIMUTH
B1	B2	205.77	86°41'19"
B2	B3	15.00	356°41'19"
B3	B4	10.00	356°41'19"
B4	B5	120.40	88°22'25"
B5	B6	10.00	178°22'25"
B6	B7	300.00	88°22'25"
B7	B8	90.00	88°22'25"
B8	B9	366.68	86°41'19"
B9	B10	510.68	359°24'10"
B10	B11	162.21	324°37'42"
B11	B6012	130.00	320°50'10"
B6012	B6013	274.55	15°52'27"
B6013	B14	483.29	135°16'13"
B14	B15	83.78	135°16'13"
B15	B16	347.74	140°50'10"
B16	B17	312.47	124°28'44"
B17	B18	154.84	140°50'10"
B18	B19	929.69	90°13'30"
B19	B6020	263.27	90°13'30"
B6020	B6021	30.00	179°30'16"
B6021	B6022	132.79	180°05'03"
B6022	B6023	51.00	180°05'03"
B6023	B24	869.88	269°29'52"
B24	B6025	220.92	205°09'52"
B6025	B6027	308.76	204°31'37"
B6027	B28	165.00	320°49'20"
B28	B29	9.93	230°49'20"
B29	B30	66.93	320°49'20"
B30	B31	107.07	310°25'07"
B31	B44	394.84	295°11'43"
B44	B32	100.74	295°11'43"
B32	B33	41.60	269°29'52"
B33	B34	33.00	269°46'16"
B34	B35	18.76	359°41'15"
B35	B36	C 397.96	269°02'43"
A	397.96	R 34302.47	DEL 0°39'53" LT
B36	B37	695.09	268°42'46"
B37	B6038	C 289.67	268°57'13"
A	289.67	R 34452.47	DEL 0°28'54" RT
B6038	B6039	96.68	319°01'56"
B6039	B6040	107.21	319°01'56"
B6040	B1	225.77	88°06'01"

PERMANENT WALL MAINTENANCE EASEMENT			
FROM	TO	DISTANCE (FT.)	AZIMUTH
B5	B43	300.00	88°22'25"
B43	B7	10.00	178°22'25"

PERMANENT WALL MAINTENANCE EASEMENT			
FROM	TO	DISTANCE (FT.)	AZIMUTH
B6040	B6041	15.63	341°42'55"
B6041	B42	230.52	88°06'01"
B42	B3	205.05	86°41'19"

ON LOT/BLOCK LINE			
FROM	TO	DISTANCE (FT.)	AZIMUTH
A	289.67	R 34452.47	DEL 0°28'54" RT
B6038	B6039	96.68	319°01'56"
B6039	B6040	107.21	319°01'56"
B6040	B1	225.77	88°06'01"

THE COMMISSIONER OF TRANSPORTATION IS HEREBY DESIGNATING THE DEFINITE LOCATION OF TRUNK HIGHWAY NO. 10 FROM 0.25 MILE NORTH OF C.S.A.H. 96 TO 0.10 MILE SOUTH OF C.S.A.H. 96 IN THE CITY OF ARDEN HILLS,

as shown on this plat prepared by the State of Minnesota Department of Transportation is hereby certified as the official plat of that portion of said T.H. 10 within the designated portion of Sections 16 & 21 and the Commissioner's Order therefor, pursuant to Minnesota Statutes, Section 160.085, Section 160.14 subd. 1, Section 161.16 subd. 2, and Section 161.18.

It is further ordered that it is necessary to acquire all trees, shrubs, grass and herbage within the right of way of said Trunk Highway, and to keep and have the exclusive control of the same.

Commissioner's Order No. 93433 Location PLAT 62-60 Nature of Interest Defining location, width, access, wall maintenance easement and temporary easement.

Certified by Charles A. Zeile, Commissioner of Transportation, by Thomas C. O'Keefe, P.E., Director of Program Delivery - Metro District, dated 1-29-2013.

I hereby certify that this plat was prepared by me or under my direct supervision and that I am a duly Licensed Land Surveyor under the Laws of the State of Minnesota; that all measurements are correctly shown on this plat; that all monuments have been correctly placed as shown on this plat; that Certificates of Location for the monumented Public Land Survey corners as shown on this plat are on file in the County Recorder's Office (if required under Minnesota Statutes, Section 160.15) and/or the County Surveyor's Office; that parcel ownerships are correctly described and delineated on the plat; and that the proposed right of way boundary lines are correctly designated on the plat.

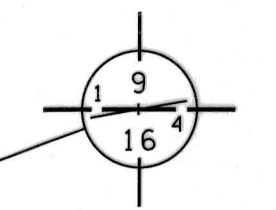
Certified by Keith A. Crocker, MNDOT District Office, License No. 25157, Date 1-28-2013.

I hereby certify that this plat was surveyed by me or under my direct supervision and that I am a duly Licensed Land Surveyor under the Laws of the State of Minnesota; that all measurements are correctly shown on this plat; that all monuments have been correctly placed as shown on this plat; that Certificates of Location for the monumented Public Land Survey corners as shown on this plat are on file in the County Recorder's Office (if required under Minnesota Statutes, Section 160.15) and/or the County Surveyor's Office.

Certified by Mark D. Beatty, MNDOT District Office, License No. 26723, Date 1-29-2013.

- SURVEY STANDARDS**
- The plat values, azimuths, and distances are based on the County coordinate system.
 - The boundary monuments shown on this plat have been field checked for location. The standard deviation for the monument position is 0.10 foot.
 - The county coordinates shown on one monument are based on ties to national control monuments.
 - For details of this survey contact the Surveying Section at the Minnesota Department of Transportation: METRO SURVEYS EAST - OAKDALE

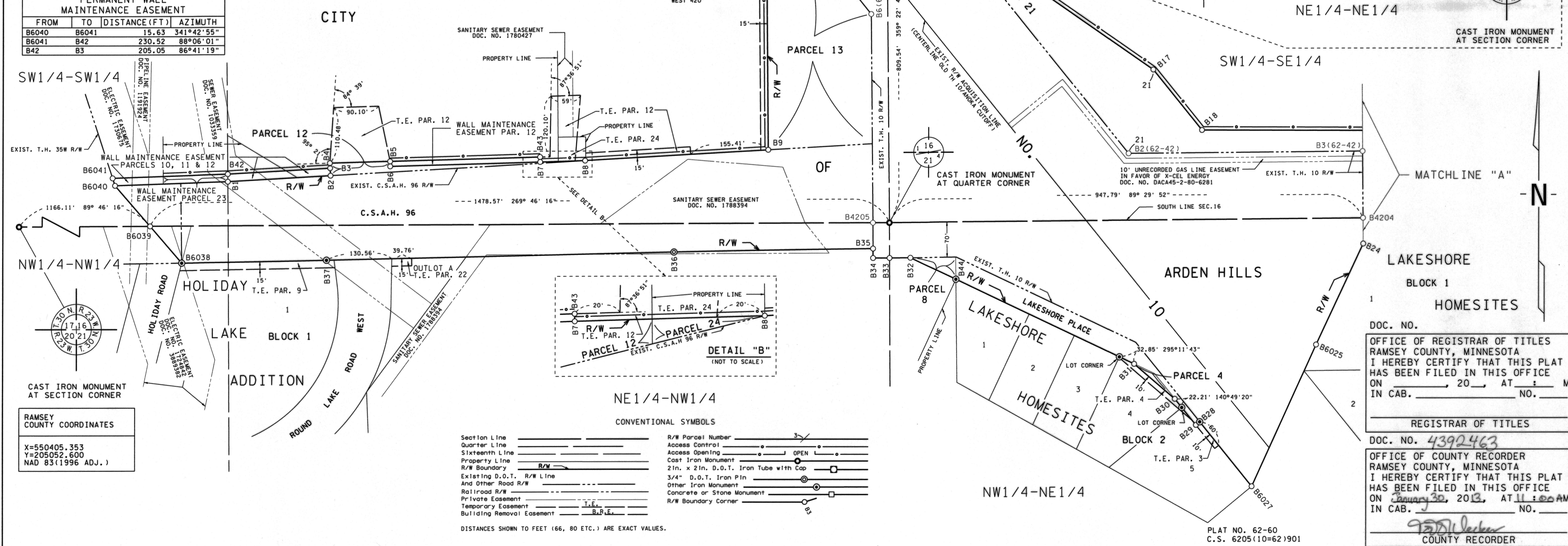
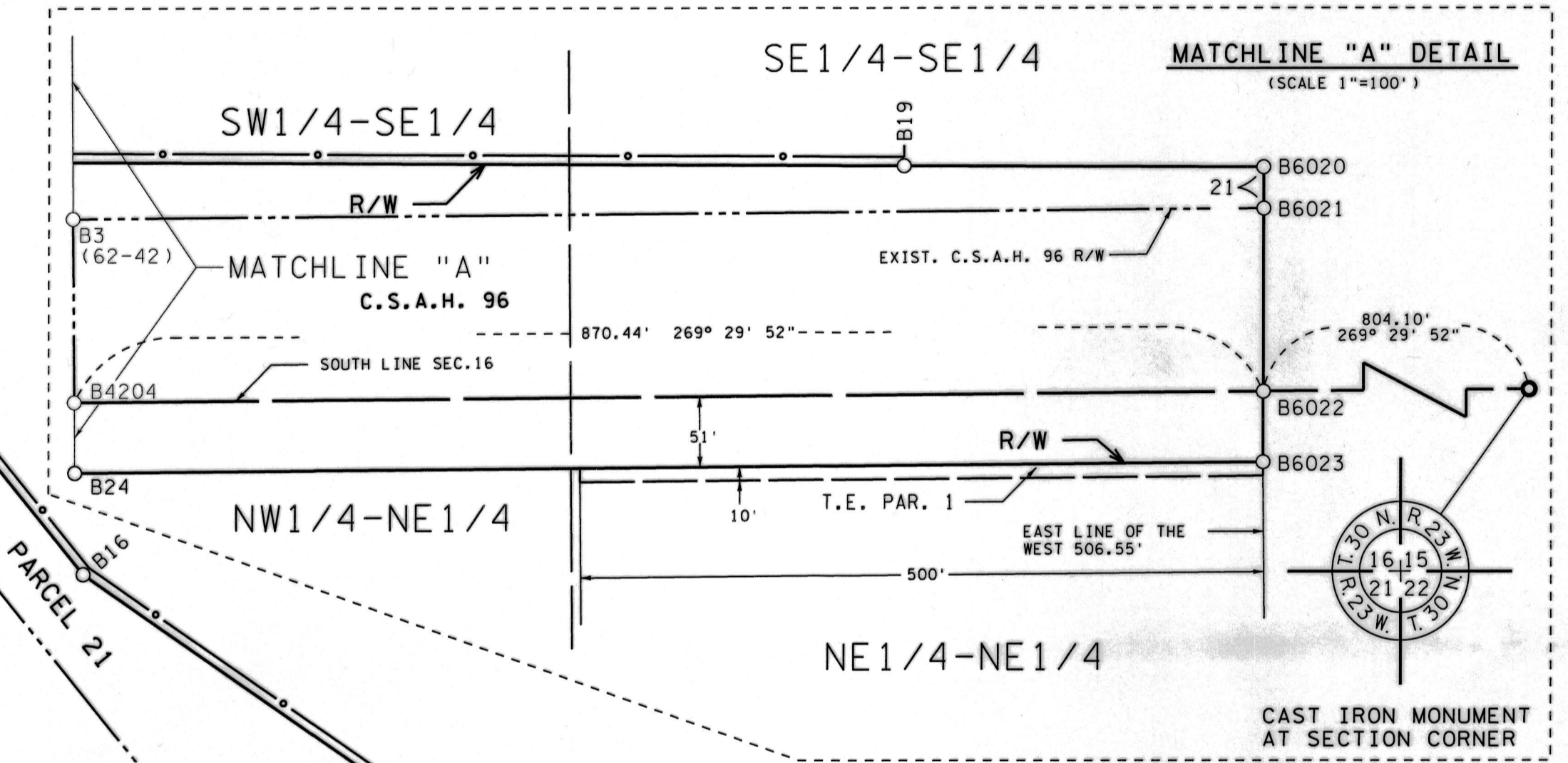
AZIMUTH ORIENTATION AND GRID CONVERSION
Plat azimuths are oriented to the County Coordinate System with 0 degrees 0 minutes 0 seconds being "GRID NORTH". Plat distances are ground lengths.



MINNESOTA DEPARTMENT OF TRANSPORTATION
RIGHT OF WAY PLAT NO. 62-60
CONTROL SECTION NO. 6205(10=62)901
IN THE SOUTH HALF OF SECTION 16, T.30 N., R.23 W.,
IN THE NORTH HALF OF SECTION 21, T.30 N., R.23 W.,
RAMSEY COUNTY, MINNESOTA

RIGHT OF WAY IN SECTION 16						
PARCEL	OWNER	LOCATION	TORRENS CERTIFICATE NO.	NEW T.H. R/W SQ. FT. (MORE OR LESS)	TEMPORARY EASEMENT EXPIRES ON	PERMANENT R/W INTEREST
23	RAMSEY COUNTY, MN	SW1/4-SW1/4		1938		EASE

NOTE: R/W, WALL MAINTENANCE EASEMENT AND TEMPORARY EASEMENT ON PARCELS 1, 3-4, 8-13, 15-16 & 21-24 TO BE ACQUIRED BY RAMSEY COUNTY. TEMPORARY EASEMENT EXPIRES ON 10/31/14.



OFFICE OF REGISTRAR OF TITLES
RAMSEY COUNTY, MINNESOTA
I HEREBY CERTIFY THAT THIS PLAT HAS BEEN FILED IN THIS OFFICE ON 20, AT 11:00 AM IN CAB. NO.

REGISTRAR OF TITLES

OFFICE OF COUNTY RECORDER
RAMSEY COUNTY, MINNESOTA
I HEREBY CERTIFY THAT THIS PLAT HAS BEEN FILED IN THIS OFFICE ON January 30, 2013, AT 11:00 AM IN CAB. NO.

COUNTY RECORDER

RAMSEY COUNTY COORDINATES
X=550405.353
Y=205052.600
NAD 83(1996 ADJ.)

- CONVENTIONAL SYMBOLS**
- Section Line
 - Quarter Line
 - Sixteenth Line
 - Property Line
 - R/W Boundary
 - Existing D.O.T. R/W Line
 - And Other Road R/W
 - Railroad R/W
 - Private Easement
 - Temporary Easement
 - Building Removal Easement
 - R/W Parcel Number
 - Access Control
 - Access Opening
 - Cast Iron Monument
 - 2in. x 2in. D.O.T. Iron Tube with Cap
 - 3/4" D.O.T. Iron Pin
 - Other Iron Monument
 - Concrete or Stone Monument
 - R/W Boundary Corner
- DISTANCES SHOWN TO FEET (66, 80 ETC.) ARE EXACT VALUES.