

MINNESOTA DEPARTMENT OF TRANSPORTATION RIGHT OF WAY PLAT NO. 62-6

STATE PROJECT NO. 6232(244-244)901
IN THE SOUTHEAST QUARTER OF SECTION 26, T.30 N., R.22 W., AND
IN THE NORTHEAST QUARTER OF SECTION 35, T.30 N., R.22 W.

RAMSEY COUNTY, MINNESOTA

RIGHT OF WAY IN SECTION 35						
PARCEL	OWNER	LOCATION	TEMPORARY EASEMENT NO.	NEW T.H. R/W	TEMPORARY EASEMENT DISTANCE	PERMANENT R/W INTEREST
56	JAMES L. SEXTON	NE1/4NE1/4		0.01	0.03	12-1-89 FEE
57	MICHAEL MORITZ	NE1/4NE1/4		0.01	0.04	12-1-89 FEE
58	ARTHUR P. NIEMI	NE1/4NE1/4		0.02	0.06	12-1-89 FEE
59	DONALD BELLAND	NE1/4NE1/4		0.01	0.02	12-1-89 FEE
59A	ARTHUR P. NIEMI	NE1/4NE1/4		0.01	0.01	12-1-89 FEE
38B	INDEPENDENT SCHOOL DIST. NO. 624	NE1/4NE1/4		0.01	0.03	12-1-89 FEE
61	MARVIN L. JENKINS	NE1/4NE1/4		0.01	0.01	12-1-89 FEE
62	DONALD L. BARTLETT	NE1/4NE1/4		0.01	0.02	12-1-89 FEE
63	KURT D. SCHMIDT	NE1/4NE1/4		0.02	0.08	12-1-89 FEE
64	MIDWEST FEDERAL SAVINGS AND LOAN ASSN.	NE1/4NE1/4		0.01	0.04	12-1-89 FEE
64A	ROY D. BARTLETT	NE1/4NE1/4		0.01	0.02	12-1-89 FEE
64B	CITY OF WHITE BEAR LAKE	NE1/4NE1/4		0.03	0.08	12-1-89 FEE
RIGHT OF WAY IN SECTION 26						
64C	TODD T. BATES	SE1/4SE1/4		0.02	0.01	12-1-89 FEE
64D	KENNETH W. KIRSCHER	SE1/4SE1/4		0.02	0.03	12-1-89 FEE
RIGHT OF WAY IN JOHN E. BLOMQUIST THIRD ADDITION						
54A	STEVEN L. RUDE	LOT 2 BK 3		700		12-1-89
54B	EUGENE E. SOBOTA	LOT 3 BK 3		678		12-1-89
RIGHT OF WAY IN MELVIN HOYT'S ADDITION						
55A	JOHN E. MCGUAI	LOT 7 BK 1		946		12-1-89
55B	EDMUND J. CICH	LOT 6 BK 1		985		12-1-89
55C	MARVEL FRANCES SCOTT	LOT 5 BK 1		1125		12-1-89
RIGHT OF WAY IN BACCHUS ADDITION						
55D	JEFFREY D. VALENTO	LOT 6 BK 9		85		12-1-89
55E	PATRICIA L. BATES	LOT 7 BK 9		391		12-1-89
RIGHT OF WAY IN SECTION 26 AND BACCHUS ADDITION						
64E	EUGENE J. ELKO	SE1/4SE1/4 LOT 13 BK8		0.01 AC. 156 SQ FT		12-1-89 FEE

POINT	DISTANCE	AZIMUTH
B1-B2	60.00'	89°41'06"
B2-B3	405.75'	89°41'06"
B3-B4	60.02'	89°41'06"
B4-B5	353.65'	89°41'06"
B5-B6	3.68'	359°13'12"
B6-B607	38.00'	89°13'12"
B607-NE 35	47.00'	179°13'12"
NE 35-B608	73.00'	179°21'00"
B608-B9	33.00'	269°19'01"
B9-B10	24.21'	359°21'00"
B10-B11	14.91'	317°15'41"
B11-B509	1274.78'	269°41'06"
B509-B508	38.00'	359°23'00"
B508-B507	43.00'	359°08'57"
B507-B1	400.38'	89°41'06"

THE COMMISSIONER OF TRANSPORTATION IS HEREBY DESIGNATING THE DEFINITE LOCATION OF TRUNK HIGHWAY NO. 244 FROM TRUNK HIGHWAY NO. 61 TO MC KNIGHT ROAD

As shown on this plat prepared by the State of Minnesota Department of Transportation as hereby certified as the official plat of this project of road 124-244 within the designated portion of sections 26 and 35 and the Commissioner's Order thereon, pursuant to Minnesota Statutes, section 320B.02, section 320B.03 and section 320B.04.

Commissioner's Order No. 68602 Location PLAT'S 62-1 THRU 62-6 Nature of Interest Definite location, width, access, temporary easements and building removal comment.

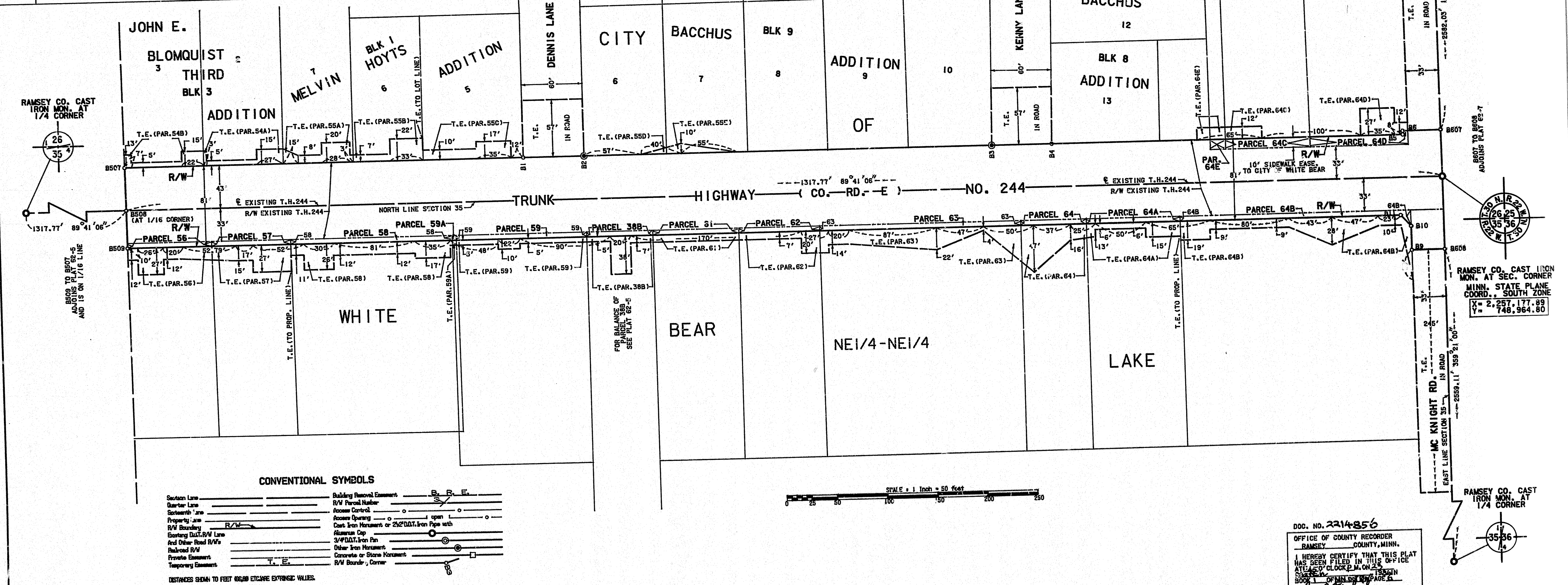
Richard J. Green, Commissioner of Transportation, dated 3-19-84. Certified by David D. Patten, Registered Land Surveyor, dated 3-19-84.

I hereby certify that this plat was prepared by me or under my direct supervision and that I am a duly Registered Land Surveyor under the Laws of the State of Minnesota. I have personally examined the original field notes and all measurements are correctly shown on this plat and that all monuments have been correctly placed as shown on this plat.

David D. Patten, Registered Land Surveyor, dated 3-5-81. Certified by David D. Patten, Registered Land Surveyor, dated 3-5-81.

- SURVEY STANDARDS**
- The plat, values, bearings and distances are based on the project control survey system.
 - The boundary measurements shown on this plat have been field checked for location. The standard deviation for the monument positions is 0.2 ft.
 - The state plane coordinates shown on this plat are based on the state control monuments.
 - Adjustments of locations have been filed at the County Recorder's Office and/or the County Surveyor's Office for the section corner monuments shown on this plat.
 - For details of this survey contact the Surveying and Mapping Section at the Minnesota Department of Transportation, OXDALE, Minn.

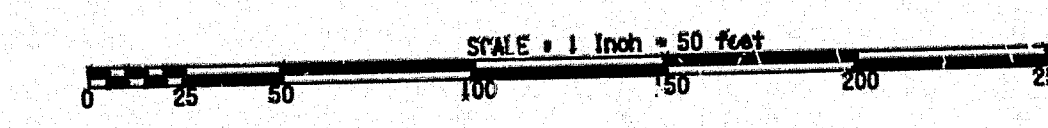
AZIMUTH ORIENTATION AND GRID CONVERSION
Plat azimuths are oriented to Minnesota State Plane Coordinate System with B degree. Distances are ground lengths and can be converted to Minnesota State Plane Grid lengths by multiplying Plat distances by 0.9999351.



CONVENTIONAL SYMBOLS

Section Line	Building Removal Easement
Quarter Line	R/W Parcel Marker
Section Line	Access Control
Property Line	Access Opening
R/W Boundary	Cast Iron Monument or 2 1/2" D.D.T. Iron Pipe with
Existing Dotted R/W Line	Aluminum Cap
And Other Road R/W's	3/4" D.D.T. Iron Pin
Railroad R/W	Other Iron Monument
Private Easement	Concrete or Stone Monument
Temporary Easement	R/W Boundary Corner

DISTANCES SHOWN TO FEET 68/88 EXCEPT WHERE OTHERWISE NOTED.



DOC. NO. 2214856
OFFICE OF COUNTY RECORDER
RAMSEY COUNTY, MINN.
I HEREBY CERTIFY THAT THIS PLAT
HAS BEEN FILED IN THIS OFFICE
AT 1:45 P.M. ON 3/19/84
BOOK 1 OF MINNESOTA PLATS
PAGE 6

PLAT NO. 62-6
S.P. 6232(244-244)901