

MINNESOTA DEPARTMENT OF TRANSPORTATION RIGHT OF WAY PLAT NO. 62-45

CONTROL SECTION NO. 6284(35W=394)901
IN THE WEST HALF OF THE NORTHWEST QUARTER OF SECTION 9, T.30 N., R.23 W.,
RAMSEY COUNTY, MINNESOTA

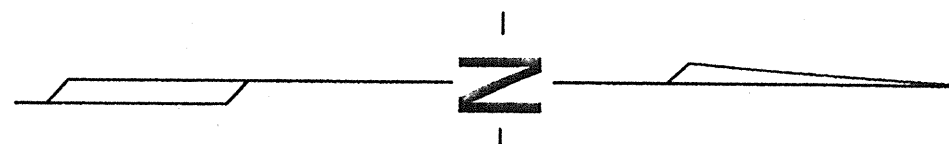
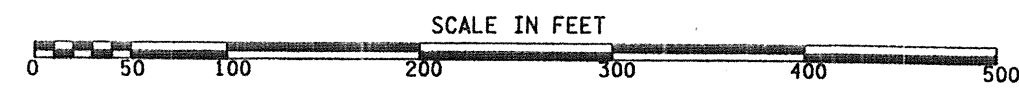
CONVENTIONAL SYMBOLS

Section Line	-----	R/W Parcel Number	3/4
Quarter Line	-----	Access Control	○
Sixteenth Line	-----	Access Opening	○ OPEN
Property Line	-----	Cast Iron Monument	○
R/W Boundary	-----	2in. x 2in. D.O.T. Iron Tube with Cap	○
Existing D.O.T. R/W Line	-----	3/4" D.O.T. Iron Pin	○
And Other Road R/W	-----	Other Iron Monument	○
Railroad R/W	-----	Concrete or Stone Monument	○
Private Easement	-----	R/W Boundary Corner	○
Temporary Easement	-----		
Building Removal Easement	-----		

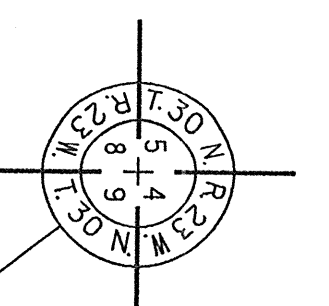
SURVEY STANDARDS

- The plat values, azimuths, and distances are based on the County coordinate system.
- The boundary monuments shown on this plat have been field checked for location. The standard deviation for the monument position is 0.10 foot.
- The county coordinates shown on one monument are based on ties to national control monuments.
- For details of this survey contact the Surveying Section at the Minnesota Department of Transportation: **METRO EAST - OAKDALE**
Name of District

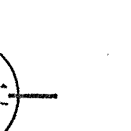
DISTANCES SHOWN TO FEET (66, 80 ETC.) ARE EXACT VALUES.



CAST IRON MONUMENT AT SECTION CORNER
RAMSEY COUNTY COORDINATES
X=550292.429
Y=215623.833
NAD 83(1996 ADJ.)



QUARTER CORNER POSITION ESTABLISHED BY PRIOR MN/DOT SURVEY



W1/4 9 TO B4406 ADJOINS PLAT 62-44

B4406

CITY

EXIST. WEST 1/4 LINE

5096.55 270°01'58"

4" PIPE AT QUARTER CORNER

9 1/4

4" PIPE AT QUARTER CORNER

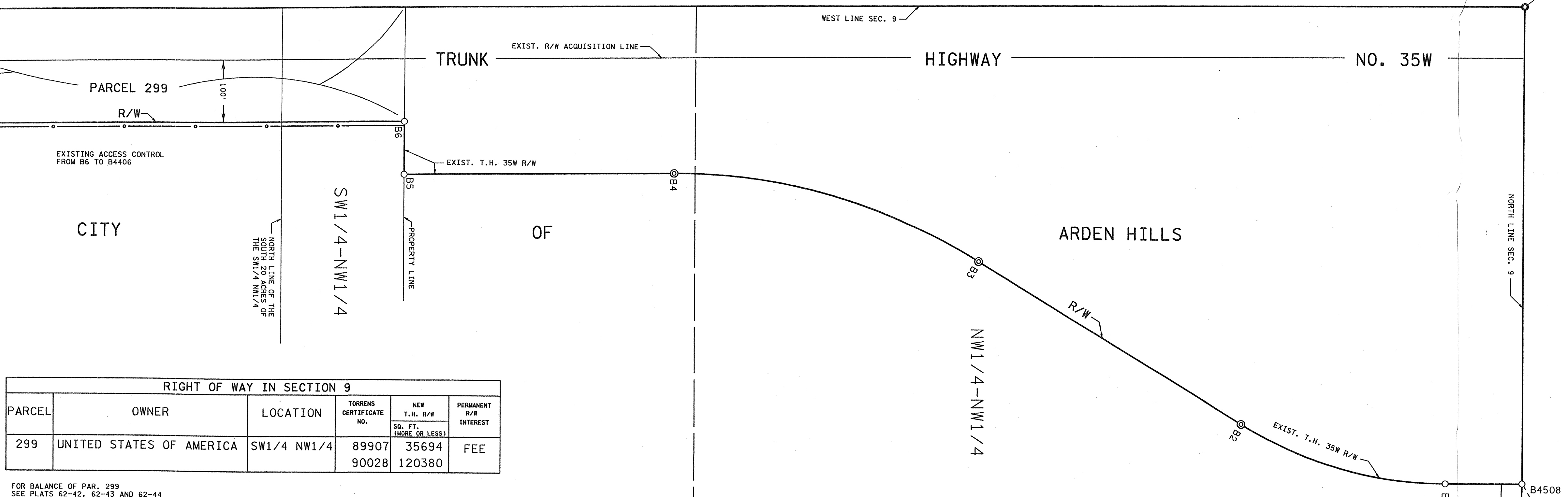
9 1/4

4" PIPE AT QUARTER CORNER

9 1/4

4" PIPE AT QUARTER CORNER

9 1/4



RIGHT OF WAY IN SECTION 9

PARCEL	OWNER	LOCATION	TORRENS CERTIFICATE NO.	NEW T.H. R/W SQ. FT. (MORE OR LESS)	PERMANENT R/W INTEREST
299	UNITED STATES OF AMERICA	SW1/4 NW1/4	89907 90028	35694 120380	FEE

FOR BALANCE OF PAR. 299 SEE PLATS 62-42, 62-43 AND 62-44

THE COMMISSIONER OF TRANSPORTATION IS HEREBY DESIGNATING THE DEFINITE LOCATION OF TRUNK HIGHWAY NO. 35W FROM CO. RD. I TO 0.5 MILE SOUTH IN THE CITY OF ARDEN HILLS

as shown on this plat prepared by the State of Minnesota Department of Transportation is hereby certified as the official plat of that portion of said T.H. 35W within the designated portion of Section 9 and the Commissioner's Order therefor, pursuant to Minnesota Statutes, Section 160.085, Section 160.14 subd. 1, Section 161.16 subd. 2, and Section 161.18.

It is further ordered that it is necessary to acquire all trees, shrubs, grass and herbage within the right of way of said Trunk Highway, and to keep and have the exclusive control of the same.

Commissioner's Order No.	Location	Nature of Interest
89451	PLAT 62-45	Definite location, width and access.

Certified by: *Susan M. Mulvihill* 6/12/07
Susan M. Mulvihill, P.E. Date
Director of Program Delivery - Metro District

I hereby certify that this plat was prepared by me or under my direct supervision and that I am a duly Licensed Land Surveyor under the Laws of the State of Minnesota; that this plat meets the requirements of Minnesota Statutes, Section 160.085, Section 160.14 subd. 1, Section 161.16 subd. 2, and Section 161.18; that parcel ownerships are correctly described and delineated on the plat; and that the proposed Right of way boundary lines are correctly designated on the plat.

Certified by: *Keith A. Crocker* 25157 6/12/2007
Keith A. Crocker License No. Date
Mn/DOT District Office

I hereby certify that this plat was surveyed by me or under my direct supervision and that I am a duly Licensed Land Surveyor under the Laws of the State of Minnesota; that all measurements are correctly shown on this plat; that all monuments have been correctly placed as shown on this plat; that Certificates of Location for the monumented Public Land Survey corners as shown on this plat are on file in the County Recorder's Office (if required under Minnesota Statutes, Section 160.15) and/or the County Surveyor's Office.

Certified by: *Mark D. Beatty* 26723 6/12/07
Mark D. Beatty License No. Date
Mn/DOT District Office

PLAT BOUNDARY DATA

FROM	TO	DISTANCE (FT)	AZIMUTH
B1	B2	C 337.81	195°25'05"
A	B2	R 612.96	DEL 31°59'25" RT
B2	B3	490.51	211°24'47"
B3	B4	C 504.23	195°25'05"
A	B4	R 914.93	DEL 31°59'25" LT
B4	B5	431.01	179°25'22"
B5	B6	85.01	270°07'09"
B6	B7	850.31	179°25'22"
B7	B4406	5.78	179°18'09"
B4406	W1/4 9	182.41	270°01'58"
W1/4 9	NW 9	2641.35	359°26'07"
NW 9	B4508	758.75	90°07'09"
B4508	B1	122.55	179°25'22"

* ON PROPERTY LINE

AZIMUTH ORIENTATION AND GRID CONVERSION
Plat azimuths are oriented to the County Coordinate System with 0 degrees 0 minutes 0 seconds being "GRID NORTH". Plat distances are ground lengths.

DOC. NO. 2007796

OFFICE OF REGISTRAR OF TITLES
RAMSEY COUNTY, MINNESOTA
I HEREBY CERTIFY THAT THIS PLAT HAS BEEN FILED IN THIS OFFICE ON JUNE 13, 2007 AT 2:50 PM IN CAB. _____ NO. _____
REGISTRAR OF TITLES

DOC. NO. 4035936

OFFICE OF COUNTY RECORDER
RAMSEY COUNTY, MINNESOTA
I HEREBY CERTIFY THAT THIS PLAT HAS BEEN FILED IN THIS OFFICE ON _____ 20____ AT _____ M IN CAB. _____ NO. _____
COUNTY RECORDER