

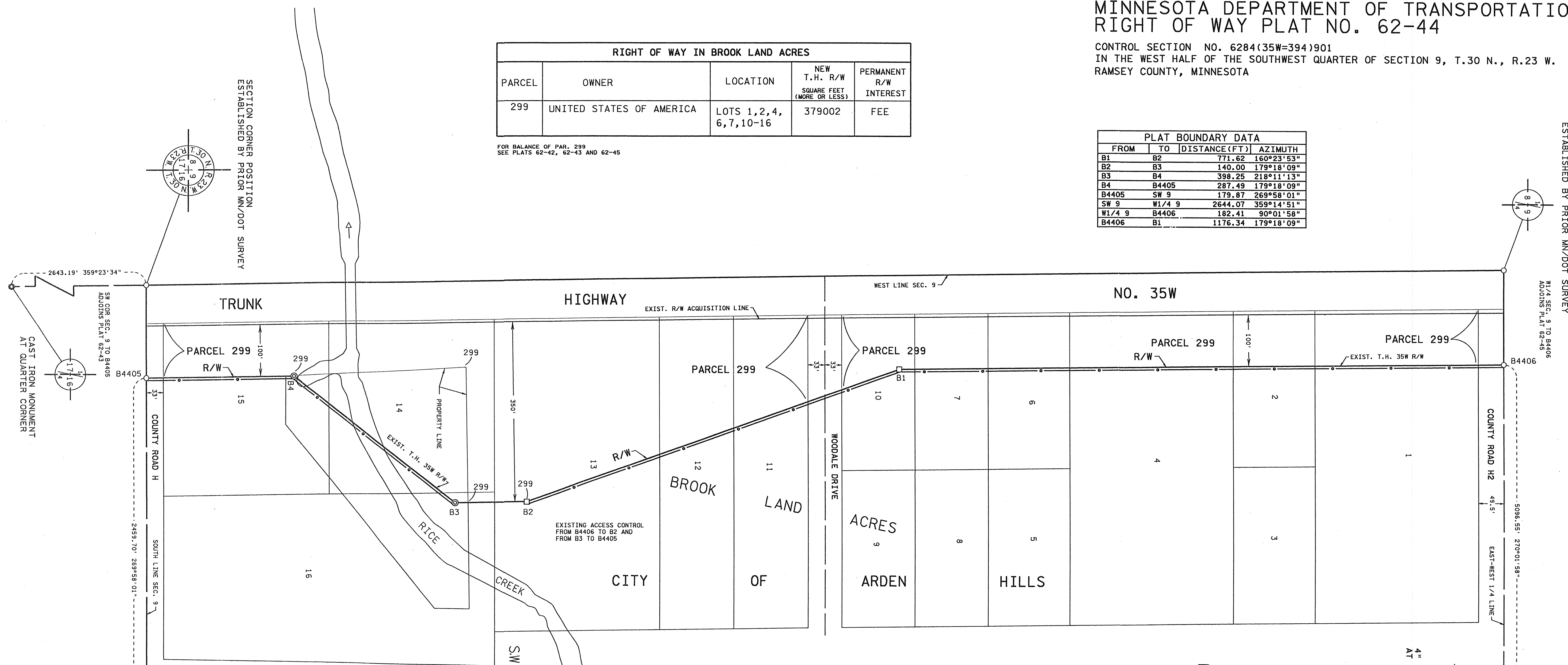
# MINNESOTA DEPARTMENT OF TRANSPORTATION RIGHT OF WAY PLAT NO. 62-44

CONTROL SECTION NO. 6284(35W=394)901  
IN THE WEST HALF OF THE SOUTHWEST QUARTER OF SECTION 9, T.30 N., R.23 W.  
RAMSEY COUNTY, MINNESOTA

RIGHT OF WAY IN BROOK LAND ACRES				
PARCEL	OWNER	LOCATION	NEW T.H. R/W SQUARE FEET (MORE OR LESS)	PERMANENT R/W INTEREST
299	UNITED STATES OF AMERICA	LOTS 1,2,4, 6,7,10-16	379002	FEE

FOR BALANCE OF PAR. 299  
SEE PLATS 62-42, 62-43 AND 62-45

PLAT BOUNDARY DATA			
FROM	TO	DISTANCE(FT)	AZIMUTH
B1	B2	771.62	160°23'53"
B2	B3	140.00	179°18'09"
B3	B4	398.25	218°11'13"
B4	B4405	287.49	179°18'09"
B4405	SW 9	179.87	269°58'01"
SW 9	W1/4 9	2644.07	359°14'51"
W1/4 9	B4406	182.41	90°01'58"
B4406	B1	1176.34	179°18'09"



THE COMMISSIONER OF TRANSPORTATION IS HEREBY DESIGNATING THE DEFINITE LOCATION OF TRUNK HIGHWAY NO. 35W FROM COUNTY ROAD H TO COUNTY ROAD H2 IN THE CITY OF ARDEN HILLS

as shown on this plat prepared by the State of Minnesota Department of Transportation is hereby certified as the official plat of that portion of said T.H. 35W within the designated portion of Section 9 and the Commissioner's Order therefor, pursuant to Minnesota Statutes, Section 160.085, Section 160.14 subd. 1, Section 161.16 subd. 2, and Section 161.18.

It is further ordered that it is necessary to acquire all trees, shrubs, grass and herbage within the right of way of said Trunk Highway, and to keep and have the exclusive control of the same.

Commissioner's Order No.	Location	Nature of Interest
89450	PLAT 62-44	Definite location, width, and access.

Certified by:  
 Carol Boland  
 Commissioner of Transportation  
*[Signature]*  
 Susan M. Mulvihill, P.E.  
 Director of Program Delivery - Metro District  
 Date: 6/12/07

I hereby certify that this plat was prepared by me or under my direct supervision and that I am a duly Licensed Land Surveyor under the Laws of the State of Minnesota; that all measurements are correctly shown on this plat; that all monuments have been correctly placed as shown on this plat; that Certificates of Location for the monumented Public Land Survey corners as shown on this plat are on file in the County Recorder's Office (if required under Minnesota Statutes, Section 160.15) and/or the County Surveyor's Office.

Certified by *[Signature]* **25157 6/8/2007**  
 Keith A. Crocker License No. Date  
 Mn/DOT District Office

I hereby certify that this plat was surveyed by me or under my direct supervision and that I am a duly Licensed Land Surveyor under the Laws of the State of Minnesota; that all measurements are correctly shown on this plat; that all monuments have been correctly placed as shown on this plat; that Certificates of Location for the monumented Public Land Survey corners as shown on this plat are on file in the County Recorder's Office (if required under Minnesota Statutes, Section 160.15) and/or the County Surveyor's Office.

Certified by *[Signature]* **26723 6/12/07**  
 Mark D. Beatty License No. Date  
 Mn/DOT District Office

### SURVEY STANDARDS

- The plat values, azimuths, and distances are based on the County coordinate system.
- The boundary monuments shown on this plat have been field checked for location. The standard deviation for the monument position is 0.10 foot.
- The county coordinates shown on one monument are based on ties to national control monuments.
- Certificates of Location have been filed at the County Recorder's Office and/or the County Surveyor's Office for the section corner monuments shown on this plat.
- For details of this survey contact the Surveying and Mapping Section at the Minnesota Department of Transportation: **METRO EAST - OAKDALE**  
Name of District

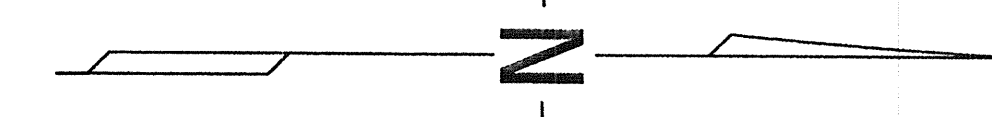
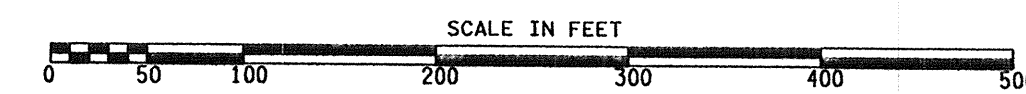
### CONVENTIONAL SYMBOLS

Section Line	_____	R/W Parcel Number	3/
Quarter Line	_____	Access Control	○
Sixteenth Line	_____	Access Opening	○ OPEN
Property Line	_____	Cast Iron Monument	○
R/W Boundary	_____	2 1/2" x 2 1/2" D.O.T. Iron Tube with Cap	○
Existing D.O.T. R/W Line	_____	3/4" D.O.T. Iron Pin	○
And Other Road R/W	_____	Other Iron Monument	○
Railroad R/W	_____	Concrete or Stone Monument	□
Private Easement	_____	R/W Boundary Corner	○
Temporary Easement	_____ T.E.		
Building Removal Easement	_____ B.R.E.		

DISTANCES SHOWN TO FEET (66, 80 ETC.) ARE EXACT VALUES.

AZIMUTH ORIENTATION AND GRID CONVERSION  
Plat azimuths are oriented to the County Coordinate System with 0 degrees 0 minutes 0 seconds being "GRID NORTH". Plat distances are ground lengths.

RAMSEY COUNTY COORDINATES  
 X=552992.747  
 Y=210340.295  
 NAD 83(1998 ADJ.)



DOC. NO. 4035937

OFFICE OF COUNTY RECORDER  
 RAMSEY COUNTY, MINNESOTA  
 I HEREBY CERTIFY THAT THIS PLAT  
 HAS BEEN FILED IN THIS OFFICE  
 ON **JUNE 13, 2007**, AT **2:50** M  
 IN CAB. \_\_\_\_\_ NO. \_\_\_\_\_

COUNTY RECORDER

PLAT NO. 62-44  
C.S. 6284(35W=394)901