

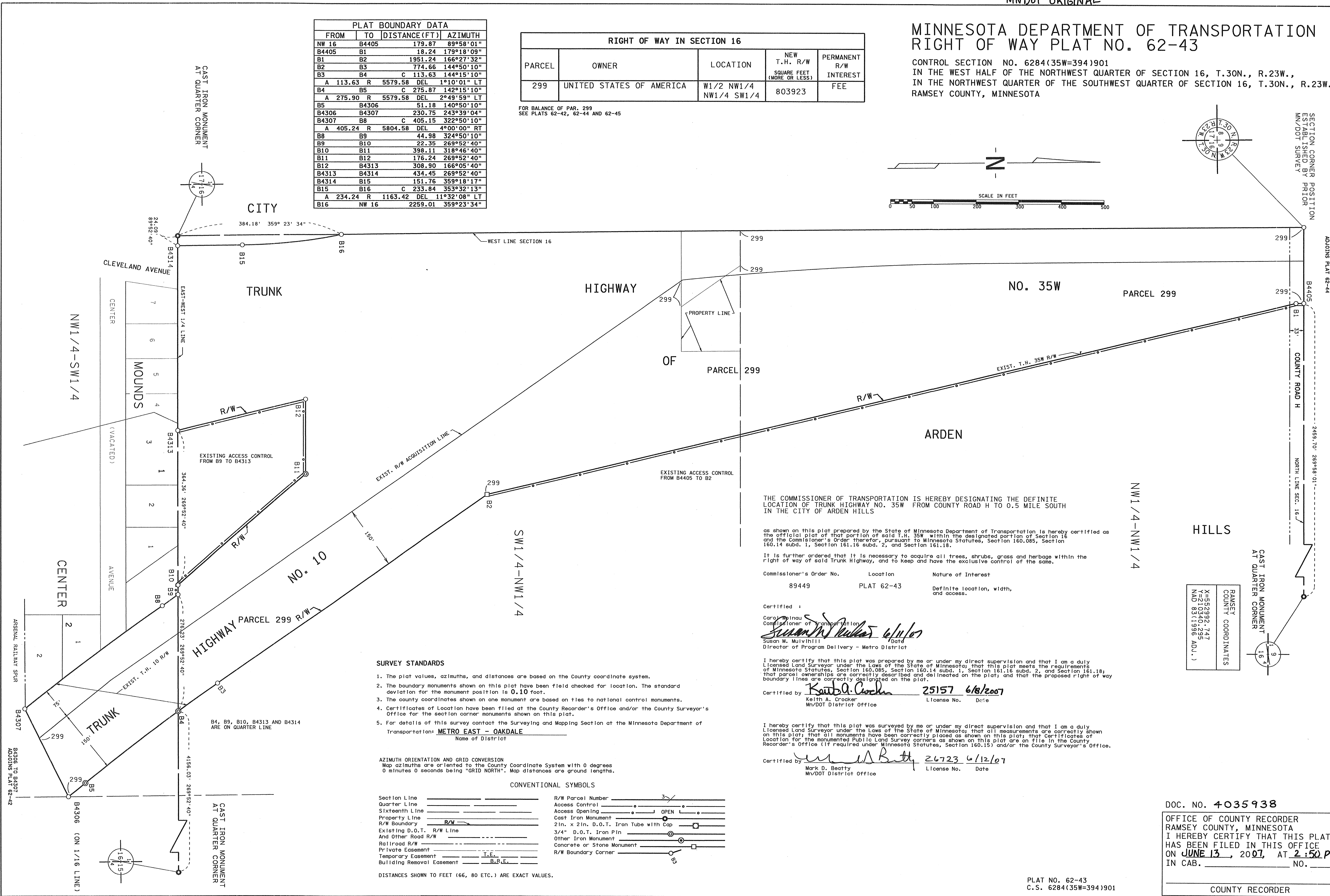
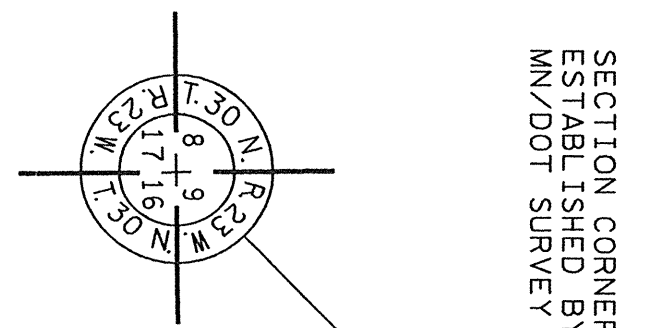
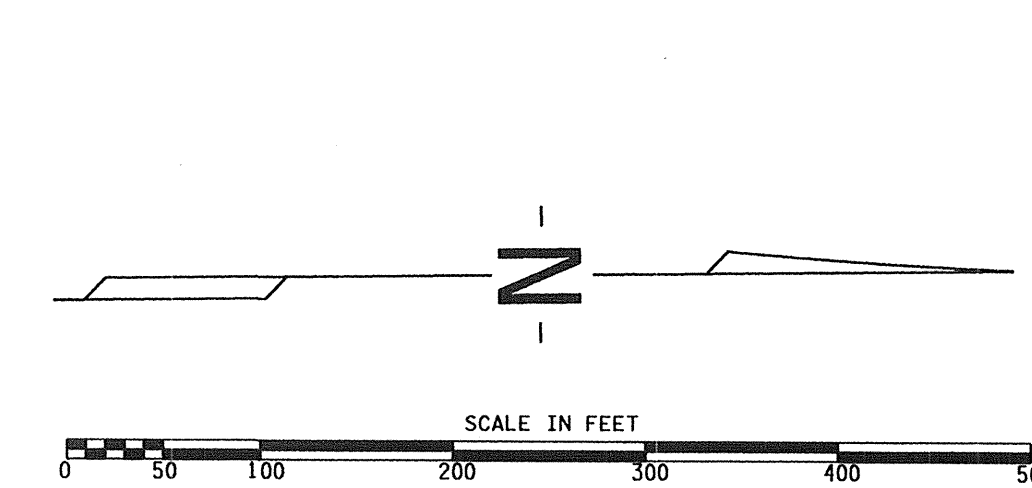
# MINNESOTA DEPARTMENT OF TRANSPORTATION RIGHT OF WAY PLAT NO. 62-43

CONTROL SECTION NO. 6284(35W=394)901  
IN THE WEST HALF OF THE NORTHWEST QUARTER OF SECTION 16, T.30N., R.23W.,  
IN THE NORTHWEST QUARTER OF THE SOUTHWEST QUARTER OF SECTION 16, T.30N., R.23W.,  
RAMSEY COUNTY, MINNESOTA

RIGHT OF WAY IN SECTION 16				
PARCEL	OWNER	LOCATION	NEW T.H. R/W (SQUARE FEET (MORE OR LESS))	PERMANENT R/W INTEREST
299	UNITED STATES OF AMERICA	W1/2 NW1/4 NW1/4 SW1/4	803923	FEE

FOR BALANCE OF PAR. 299  
SEE PLATS 62-42, 62-44 AND 62-45

PLAT BOUNDARY DATA				
FROM	TO	DISTANCE (FT)	AZIMUTH	
NW 16	B4405	179.87	89°58'01"	
B4405	B1	18.24	179°18'09"	
B1	B2	1951.24	166°27'32"	
B2	B3	774.66	144°50'10"	
B3	B4	113.63	144°15'10"	
A	B4	5579.58	DEL 1°10'01" LT	
B4	B5	275.87	142°15'10"	
A	B5	5579.58	DEL 2°49'59" LT	
B5	B4306	51.18	140°50'10"	
B4306	B4307	230.75	243°39'04"	
B4307	B8	405.15	322°50'10"	
A	B8	5804.58	DEL 4°00'00" RT	
B8	B9	44.98	324°50'10"	
B9	B10	22.35	269°52'40"	
B10	B11	398.11	318°46'40"	
B11	B12	176.24	269°52'40"	
B12	B4313	308.90	166°05'40"	
B4313	B4314	434.45	269°52'40"	
B4314	B15	151.76	359°18'17"	
B15	B16	233.84	353°32'13"	
A	B16	1163.42	DEL 11°32'08" LT	
B16	NW 16	2259.01	359°23'34"	



THE COMMISSIONER OF TRANSPORTATION IS HEREBY DESIGNATING THE DEFINITE LOCATION OF TRUNK HIGHWAY NO. 35W FROM COUNTY ROAD H TO 0.5 MILE SOUTH IN THE CITY OF ARDEN HILLS

as shown on this plat prepared by the State of Minnesota Department of Transportation is hereby certified as the official plat of that portion of said T.H. 35W within the designated portion of Section 16 and the Commissioner's Order therefor, pursuant to Minnesota Statutes, Section 160.085, Section 160.14 subd. 1, Section 161.16 subd. 2, and Section 161.18.

It is further ordered that it is necessary to acquire all trees, shrubs, grass and herbage within the right of way of said Trunk Highway, and to keep and have the exclusive control of the same.

Commissioner's Order No.	Location	Nature of Interest
89449	PLAT 62-43	Definite location, width, and access.

Certified by:  
 Carol Molnau  
 Commissioner of Transportation  
*Susan M. Mulvihill* 6/11/07  
 Susan M. Mulvihill Date  
 Director of Program Delivery - Metro District

I hereby certify that this plat was prepared by me or under my direct supervision and that I am a duly Licensed Land Surveyor under the Laws of the State of Minnesota; that all measurements are correctly shown on this plat; that all monuments have been correctly placed as shown on this plat; that Certificates of Location for the monumented Public Land Survey corners as shown on this plat are on file in the County Recorder's Office (if required under Minnesota Statutes, Section 160.15) and/or the County Surveyor's Office.

Certified by: *Keith A. Crocker* 25157 6/8/2007  
 Keith A. Crocker License No. Date  
 Mn/DOT District Office

I hereby certify that this plat was surveyed by me or under my direct supervision and that I am a duly Licensed Land Surveyor under the Laws of the State of Minnesota; that all measurements are correctly shown on this plat; that all monuments have been correctly placed as shown on this plat; that Certificates of Location for the monumented Public Land Survey corners as shown on this plat are on file in the County Recorder's Office (if required under Minnesota Statutes, Section 160.15) and/or the County Surveyor's Office.

Certified by: *Mark D. Beatty* 26723 6/12/07  
 Mark D. Beatty License No. Date  
 Mn/DOT District Office

- SURVEY STANDARDS**
- The plat values, azimuths, and distances are based on the County coordinate system.
  - The boundary monuments shown on this plat have been field checked for location. The standard deviation for the monument position is 0.10 foot.
  - The county coordinates shown on one monument are based on ties to national control monuments.
  - Certificates of Location have been filed at the County Recorder's Office and/or the County Surveyor's Office for the section corner monuments shown on this plat.
  - For details of this survey contact the Surveying and Mapping Section at the Minnesota Department of Transportation: **METRO EAST - OAKDALE**  
Name of District

**AZIMUTH ORIENTATION AND GRID CONVERSION**  
 Map azimuths are oriented to the County Coordinate System with 0 degrees 0 minutes 0 seconds being "GRID NORTH". Map distances are ground lengths.

**CONVENTIONAL SYMBOLS**

Section Line	_____	R/W Parcel Number	_____
Quarter Line	_____	Access Control	_____
Sixteenth Line	_____	Access Opening	_____
Property Line	_____	Cast Iron Monument	_____
R/W Boundary	_____	2 1/2" x 2 1/2" D.O.T. Iron Tube with Cap	_____
Existing D.O.T. R/W Line	_____	3/4" D.O.T. Iron Pin	_____
And Other Road R/W	_____	Other Iron Monument	_____
Railroad R/W	_____	Concrete or Stone Monument	_____
Private Easement	_____	R/W Boundary Corner	_____
Temporary Easement	_____		
Building Removal Easement	_____		

DISTANCES SHOWN TO FEET (66, 80 ETC.) ARE EXACT VALUES.

RAMSEY COUNTY COORDINATES

X=552992.747
Y=210340.285
NAD 83 (1986 ADJ.)

DOC. NO. 4035938

OFFICE OF COUNTY RECORDER  
 RAMSEY COUNTY, MINNESOTA  
 I HEREBY CERTIFY THAT THIS PLAT  
 HAS BEEN FILED IN THIS OFFICE  
 ON JUNE 13, 2007, AT 2:50 PM  
 IN CAB. \_\_\_\_\_ NO. \_\_\_\_\_

\_\_\_\_\_ COUNTY RECORDER

PLAT NO. 62-43  
C.S. 6284(35W=394)901