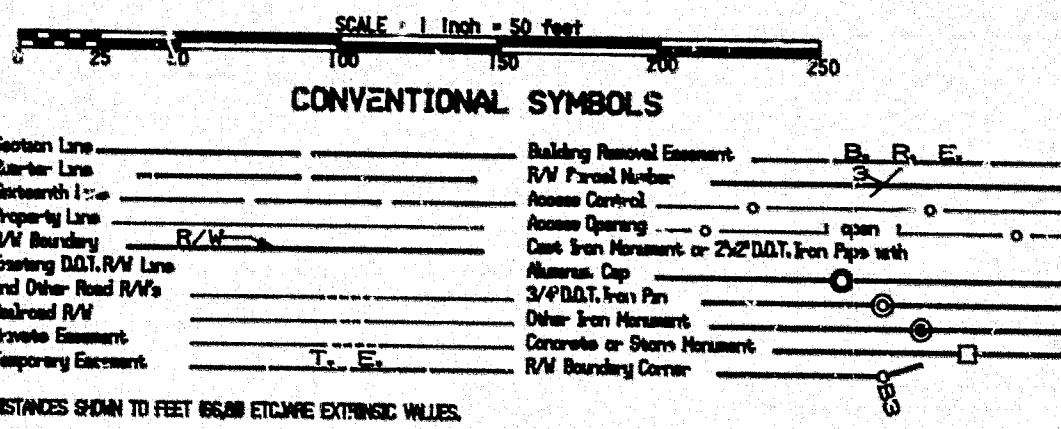


RIGHT OF WAY IN ELMWOOD GARDEN FARMS							
PARCEL	OWNER	LOCATION	TOWN'S DEPT. OF STATE NO.	NEW T.M. A/V	TEMPORARY EASEMENT 25 FT. (USE OR LESS)	BUILDING FOOTING EASEMENT	PERMANENT R/W INTEREST
22	WARREN A. ULMER	LOT 8	280335	828	1104		12-1-89 FEE
23	JIMMY A. RICHARDSON	LOT 7	293586	828	1489		12-1-89 FEE
24	MABEL I. AXELSON	LOT 5	225204	413	578		12-1-89 FEE
25	MARK P. STEHLY	LOT 6	302769	415	581		12-1-89 FEE
35	MARCELLUS F. RIVARD	LOTS 1 & 2	277107	1316	1305		12-1-89 FEE
163374							
RIGHT OF WAY IN RIVARD ADDITION							
25A	JAMES A. WAGNER	LOT 1 BK 3	306112		210		12-1-89
33	ARCHIE D. CLOUD	LOTS 2 & 3 BK 2	215540		610		12-1-89
34	ALBERT L. BALK	LOTS 1 & 2 BK 2	288972		853		12-1-89
RIGHT OF WAY IN NORTON'S RICHFIELD ACRES							
26	K & P ENTERPRISES	LOT 10	280819	90	453		12-1-89 FEE
28	EDWIN P. ISAKSON	LOT 8	269781		210		12-1-89
29	GARY L. RAATZ	LOTS 6 & 7	292255		1110		12-1-89
30	RUSSELL NOREEN	LOT 6	210317		1134		12-1-89
31	EDWARD W. JACKSON	LOT 5	147884		786		12-1-89
32	ROBERT F. CLYNE	LOT 4	199353		614		12-1-89
36	EVANGELICAL LUTHERAN CHURCH	LOT 2	165485		3763		12-1-89
37	JOHN J. AHERN	LOT 1	255744		1080		12-1-89

SURVEY STANDARDS

- The plot values, bearings, and distances are based on the project control survey system.
- The boundary monuments shown on this plat have been field checked for location. The standard deviation for the monument position is 0.2 ft.
- The state plane coordinates shown on this instrument are based on the national control network.
- Particulars of location have been filed at the County Recorder's Office and/or the County Surveyor's Office for the section corner monuments shown on this plat.
- For details of the survey contact the Surveying and Mapping Section at the Minnesota Department of Transportation/MDOT. Name of District: _____

AZIMUTH, ORIENTATION AND GRID CONVERSION
 Plot bearings are oriented to Minnesota State Plane Coordinate System with 8 digit accuracy and using NAD 83 datum.
 Plot distances are ground lengths and can be converted to Minnesota State Plane Grid lengths by multiplying Plot distance by 0.999957.



POINT	DISTANCE	AZIMUTH
B1-B2	10.59'	89° 19' 52" W
B2-B3	9.00'	358° 19' 52" W
B3-B4	10.00'	89° 19' 52" W
B4-B5	9.00'	179° 19' 52" W
B5-B6	961.78'	89° 19' 52" W
B6-B7	66.00'	89° 19' 52" W
B7-B8	189.95'	89° 19' 52" W
B8-B9	11.16'	62° 42' 55" W
B9-B10	43.06'	86° 10' 41" W
B10-N1/4 35	50.37'	179° 04' 44" W
N1/4 35-B11	51.57'	179° 25' 00" W
B11-B12	47.85'	289° 25' 00" W
B12-B13	15.50'	358° 19' 52" W
B13-B14	207.85'	289° 19' 52" W
B14-B15	5.00'	179° 24' 16" W
B15-B16	112.91'	289° 19' 52" W
B16-B17	60.00'	289° 19' 52" W
B17-B18	60.00'	289° 19' 52" W
B18-B19	112.91'	289° 19' 52" W
B19-B20	5.00'	358° 19' 52" W
B20-B21	443.33'	358° 19' 52" W
B21-B22	15.00'	179° 19' 52" W
B22-B23	10.00'	358° 19' 52" W
B23-B24	15.00'	358° 19' 52" W
B24-B25	15.00'	358° 19' 52" W
B25-B26	10.19'	289° 19' 52" W
B26-B27	5.00'	179° 19' 52" W
B27-B315	33.00'	289° 19' 52" W
B315-B314	43.00'	359° 19' 15" W
B314-B313	43.00'	359° 11' 04" W
B313-B1	32.71'	89° 19' 32" W

**MINNESOTA DEPARTMENT OF TRANSPORTATION
 RIGHT OF WAY PLAT NO. 62-4**

STATE PROJECT NO. 6232(244-244)901
 IN THE SOUTHWEST QUARTER OF THE SOUTHWEST QUARTER OF SECTION 26, T.30 N., R.22 W., AND IN THE NORTHEAST QUARTER OF THE NORTHWEST QUARTER OF SECTION 35, T.30 N., R.22 W. RAMSEY COUNTY, MINNESOTA

THE COMMISSIONER OF TRANSPORTATION IS HEREBY DESIGNATING THE DEFINITE LOCATION OF TRUNK (HIGHWAY NO. 244 FROM TRUNK HIGHWAY NO. 62) TO MC KNIGHT ROAD

As shown on this plat prepared by the State of Minnesota Department of Transportation in conformity with the Minnesota Department of Transportation Standard Specifications for Highway Construction, Section 202.02, and the Minnesota Department of Transportation Standard Specifications for Highway Construction, Section 202.03, and the Minnesota Department of Transportation Standard Specifications for Highway Construction, Section 202.04.

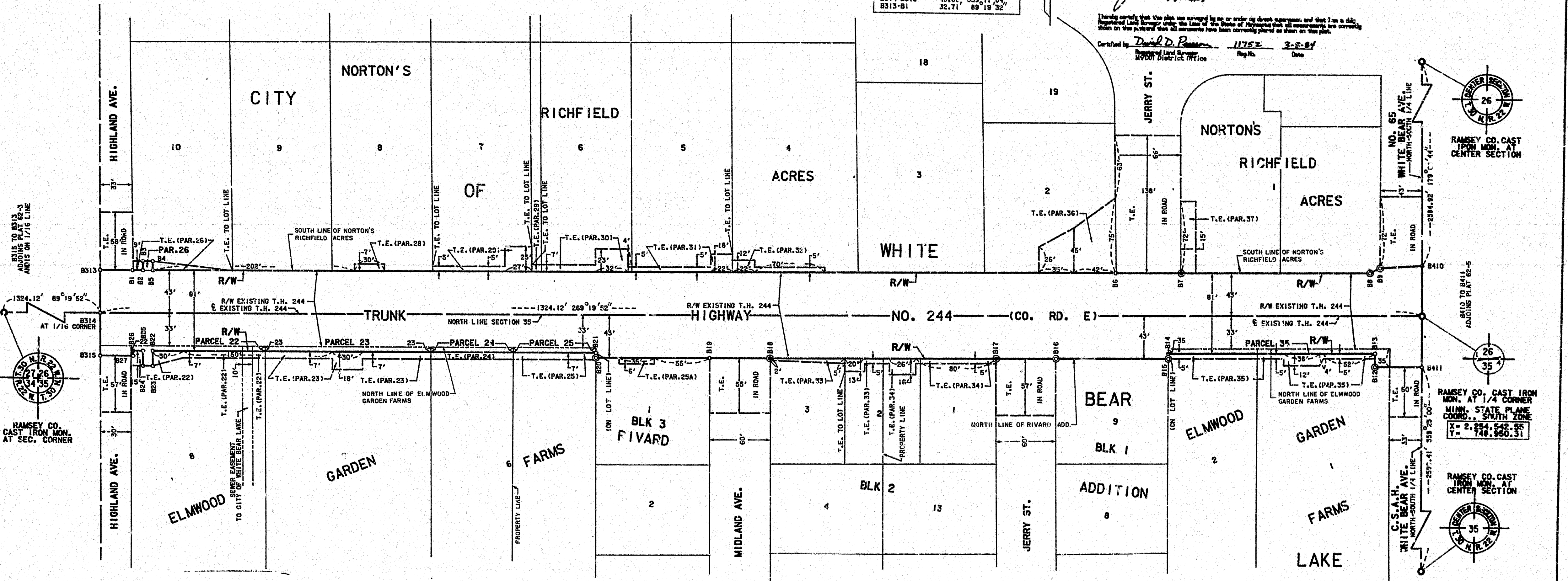
Commissioner's Order No. 68602
 Location: PLATS 62-1 THRU 62-6
 Date of Issue: 3-5-84
 Recommended for Certification: _____ Date: _____

By: _____
 Director of R/W Operations
 Date: 3-5-84
 Minnesota Department of Transportation

I hereby certify that this plat was prepared by me or under my direct supervision and that I am a duly licensed Professional Engineer in the State of Minnesota. I am a duly licensed Professional Engineer in the State of Minnesota. I am a duly licensed Professional Engineer in the State of Minnesota. I am a duly licensed Professional Engineer in the State of Minnesota.

Certified by: _____
 Registered Land Surveyor
 Office of Surveying & Mapping
 No. 10160
 Date: 3-2-84

Certified by: _____
 Registered Land Surveyor
 5700 District Office
 No. 11752
 Date: 3-5-84



I do hereby certify that this is a true copy of Document No. 2312763
 Eugene H. Gibbons
 Ramsey County Recorder
 By: _____ Deputy

This is to certify that this instrument was filed in this office on the 6 day of March, A.D. 1984, at 10:30 o'clock A.M., as Document No. 753624
 Eugene H. Gibbons
 Registrar of Titles
 By: _____ Deputy

DOC. NO. 753745
 OFFICE OF REGISTRAR OF TITLES
 RAMSEY COUNTY, MINN.
 I HEREBY CERTIFY THAT THIS PLAT HAS BEEN FILED IN THIS OFFICE AND IS CORRECTLY RECORDED.
 By: _____