

MINNESOTA DEPARTMENT OF TRANSPORTATION  
RIGHT OF WAY PLAT NO. 62-39 (SHEET 1 OF 2)

CONTROL SECTION NO. 6211(36-118)901  
IN THE NORTHEAST QUARTER OF SECTION 12, T. 29 N., R. 22 W.,  
RAMSEY COUNTY, MINNESOTA

- (1) THE NORTH ST. PAUL LAND COMPANY'S RE-ARRANGEMENT NO. 1 IN BLOCK 17 OF NORTH ST. PAUL PROPER
- (2) THE NORTH ST. PAUL LAND CO'S RE-ARRANGEMENT NO. 1 IN BLOCKS 14, 15, AND 18 OF NORTH ST. PAUL PROPER
- (3) NORTH ST. PAUL LAND CO'S RE-ARRANGEMENT NO. 2 IN BLOCK 21 OF NORTH ST. PAUL PROPER
- (4) HARRIS' RE-ARRANGEMENT NO. 1 IN BLOCK 21 OF NORTH ST. PAUL PROPER
- (5) KUHLS' REARRANGEMENT OF LOTS 16, 17 & 18 BLOCK 39, 4TH ADDITION TO NORTH ST. PAUL
- (6) KUHLS' REARRANGEMENT OF LOTS 13, 14 & 15 OF BLOCK 38, 4TH ADDITION TO NORTH ST. PAUL

PLAT BOUNDARY DATA			
FROM	TO	[DISTANCE(FT)]	AZIMUTH
B3824	B1	124.40	53°46'51"
B1	B2	499.51	50°27'22"
B2	B3	8.64	359°38'31"
B3	B4	122.70	51°18'19"
B4	B5	3.76	88°31'00"
B5	B6	14.76	359°38'31"
B6	B7	85.26	359°38'31"
B7	B8	20.00	88°31'00"
B8	B9	255.03	359°38'31"
B9	B10	28.01	314°04'46"
B10	B11	60.01	359°38'31"
B11	B12	20.00	88°31'00"
B12	B13	145.12	359°38'31"
B13	B14	66.01	88°31'00"
B14	B15	20.00	179°38'31"
B15	B16	485.59	88°31'00"
B16	B17	4.58	51°18'19"
B17	B18	142.35	359°38'01"
B18	B19	128.83	88°31'00"
B19	B20	60.00	359°37'53"
B20	B21	76.01	88°31'00"
B21	B22	492.52	53°33'25"
B22	B23	17.59	358°31'00"
B23	B24	31.35	88°31'00"
B24	B25	267.29	49°17'21"
B25	B26	130.88	359°29'16"
B26	B27	159.04	88°31'00"
B27	B28	C 96.60	50°07'00"
A 96.60	R 11530.35	DEL 0°28'48" RT	
B28	B29	0.24	88°31'05"
B29	B30	0.19	358°34'21"
B30	B31	C 186.53	50°49'36"
A 186.53	R 11530.35	DEL 0°56'13" RT	
B31	B3932	254.89	51°17'43"
B3932	B3933	358.10	179°40'28"
B3933	B34	76.54	231°17'24"
B34	B35	127.57	359°40'28"
B35	B36	1166.51	231°17'24"
B36	B37	10.00	141°17'24"
B37	B38	1047.40	231°17'24"
B38	B39	106.91	133°47'57"

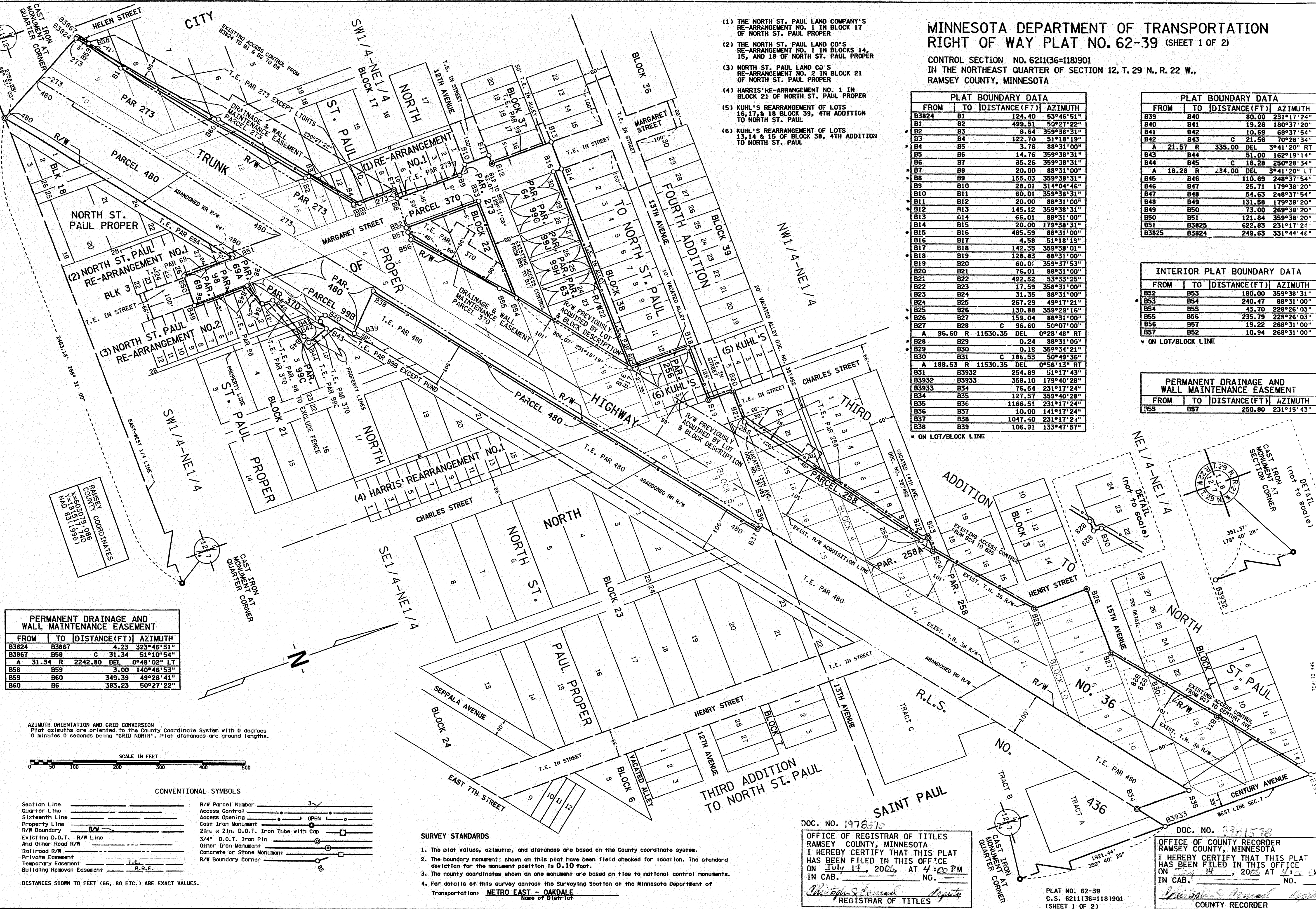
\* ON LOT/BLOCK LINE

PLAT BOUNDARY DATA			
FROM	TO	[DISTANCE(FT)]	AZIMUTH
B39	B40	80.00	231°17'24"
B40	B41	19.26	180°37'20"
B41	B42	10.69	68°37'54"
B42	B43	C 21.56	70°28'34"
A 21.57	R 335.00	DEL 3°41'20" RT	
B43	B44	51.00	162°19'14"
B44	B45	C 18.28	250°28'34"
A 18.28	R 284.00	DEL 3°41'20" LT	
B45	B46	110.69	248°37'54"
B46	B47	25.71	179°38'20"
B47	B48	54.63	248°37'54"
B48	B49	131.58	179°38'20"
B49	B50	73.00	269°38'20"
B50	B51	121.84	359°38'20"
B51	B3825	622.83	231°17'24"
B3825	B3824	249.63	331°44'46"

INTERIOR PLAT BOUNDARY DATA			
FROM	TO	[DISTANCE(FT)]	AZIMUTH
B52	B53	180.00	359°38'31"
B53	B54	240.47	88°31'00"
B54	B55	43.70	228°26'03"
B55	B56	235.79	228°26'03"
B56	B57	19.22	268°31'00"
B57	B52	10.94	268°31'00"

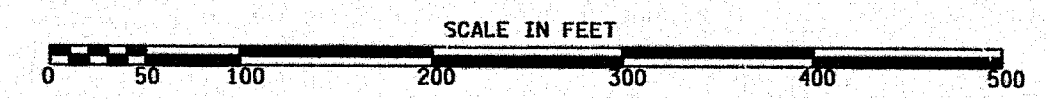
\* ON LOT/BLOCK LINE

PERMANENT DRAINAGE AND WALL MAINTENANCE EASEMENT			
FROM	TO	[DISTANCE(FT)]	AZIMUTH
B55	B57	250.80	231°15'43"



PERMANENT DRAINAGE AND WALL MAINTENANCE EASEMENT			
FROM	TO	[DISTANCE(FT)]	AZIMUTH
B3824	B3867	4.23	323°46'51"
B3867	B58	C 31.34	51°10'54"
A 31.34	R 2242.80	DEL 0°48'02" LT	
B58	B59	3.00	140°46'53"
B59	B60	349.39	49°28'41"
B60	B6	383.23	50°27'22"

AZIMUTH ORIENTATION AND GRID CONVERSION  
Plat azimuths are oriented to the County Coordinate System with 0 degrees 0 minutes 0 seconds being "GRID NORTH". Plat distances are ground lengths.



CONVENTIONAL SYMBOLS	
Section Line	—
Quarter Line	—
Sixteenth Line	—
Property Line	—
R/W Boundary	R/W
Existing D.O.T. R/W Line	—
And Other Road R/W	—
Private Easement	—
Temporary Easement	T.E.
Building Removal Easement	B.R.E.
R/W Parcel Number	—
Access Control	—
Access Opening	—
Cast Iron Monument	—
2In. x 2In. D.O.T. Iron Tube with Cap	—
3/4" D.O.T. Iron Pin	—
Other Iron Monument	—
Concrete or Stone Monument	—
R/W Boundary Corner	—

- SURVEY STANDARDS**
- The plat values, azimuths, and distances are based on the County coordinate system.
  - The boundary monuments shown on this plat have been field checked for location. The standard deviation for the monument position is 0.10 foot.
  - The county coordinates shown on one monument are based on ties to national control monuments.
  - For details of this survey contact the Surveying Section at the Minnesota Department of Transportation: **METRO EAST - OAKDALE**

DOC. NO. 1978310  
OFFICE OF REGISTRAR OF TITLES  
RAMSEY COUNTY, MINNESOTA  
I HEREBY CERTIFY THAT THIS PLAT  
HAS BEEN FILED IN THIS OFFICE  
ON July 14, 2006, AT 4:00 PM  
IN CAB. NO. \_\_\_\_\_  
*Wendy S. Conrad*  
REGISTRAR OF TITLES

PLAT NO. 62-39  
C.S. 6211(36-118)901  
(SHEET 1 OF 2)

DOC. NO. 331578  
OFFICE OF COUNTY RECORDER  
RAMSEY COUNTY, MINNESOTA  
I HEREBY CERTIFY THAT THIS PLAT  
HAS BEEN FILED IN THIS OFFICE  
ON July 14, 2006, AT 4:00 PM  
IN CAB. NO. \_\_\_\_\_  
*Wendy S. Conrad*  
COUNTY RECORDER

20X