

MINNESOTA DEPARTMENT OF TRANSPORTATION
RIGHT OF WAY PLAT NO. 62-38 (SHEET 1 OF 2)

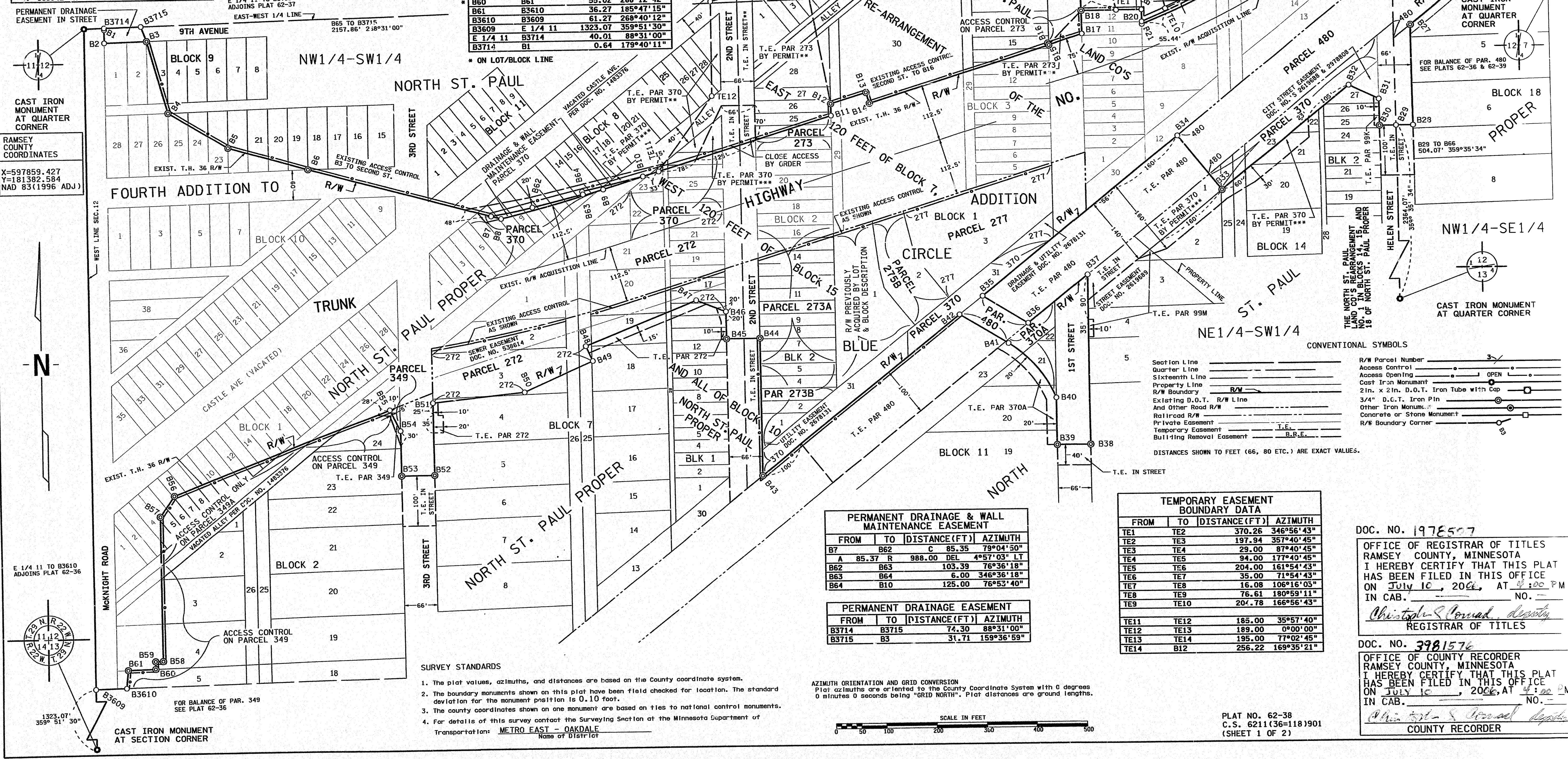
CONTROL SECTION NO. 6211(36-118)901
IN THE NORTHWEST QUARTER OF THE SOUTHEAST QUARTER OF SECTION 12, T. 29 N., R. 22 W.,
IN THE NORTH HALF OF THE SOUTHWEST QUARTER OF SECTION 12, T. 29 N., R. 22 W.,
IN THE SOUTH HALF OF THE NORTHWEST QUARTER OF SECTION 12, T. 29 N., R. 22 W.,
IN THE SOUTHWEST QUARTER OF THE NORTHEAST QUARTER OF SECTION 12, T. 29 N., R. 22 W.,
RAMSEY COUNTY, MINNESOTA

FROM	TO	[DISTANCE(FT)]	AZIMUTH
B1	B2	29.37	179°51'31"
B2	B3	85.27	88°30'59"
B3	B4	149.56	164°16'52"
B4	B5	140.09	120°52'38"
B5	B6	166.57	105°58'55"
B6	B7	376.53	105°06'23"
B7	B8	20.64	105°06'23"
B8	B9	C 212.31	74°59'41"
A	212.36	R 2751.76	DEL 4°25'18" LT
B9	B10	83.49	72°47'02"
B10	B11	354.30	72°47'02"
B11	B12	23.51	359°40'42"
B12	B13	73.08	72°47'02"
B13	B14	22.50	162°47'02"
B14	B15	376.67	72°47'02"
B15	B16	0.45	359°38'08"
B16	B17	69.40	71°38'11"
B17	B18	IS 75.00'	NORTHWESTERLY AND PARALLEL WITH A EULER SPIRAL ON EXISTING T.H. 36 ACQUISITION LINE DEFINED BY:
DC		3°00'00"	LT
OS		4°30'00"	
LS		300.00	
B17	B18	46.24	359°38'08"
B18	B19	120.00	89°38'08"
B19	B20	24.12	179°38'08"
B20	B21	5.15	179°38'08"
B21	B22	C 189.34	65°08'38"
A	189.42	R 1859.52	DEL 5°50'12" LT

FROM	TO	[DISTANCE(FT)]	AZIMUTH
B22	B23	C 127.98	60°15'13"
A	128.01	R 1859.52	DEL 3°56'39" LT
B23	B3824	295.99	55°16'15"
B23	B3824	IS 50.00'	NORTHWESTERLY AND PARALLEL WITH A EULER SPIRAL ON EXISTING T.H. 36 ACQUISITION LINE DEFINED BY:
DC		3°00'00"	LT
OS		4°30'00"	
LS		300.00	
B3824	B3825	249.63	151°44'48"
B3825	B26	14.88	88°31'00"
B26	B27	1°9.40	231°17'24"
B27	B28	200.00	179°35'34"
B28	B29	33.00	269°35'34"
B29	B30	33.00	269°35'34"
B30	B31	53.76	359°35'34"
B31	B32	65.40	295°26'30"
B32	B33	330.04	231°17'24"
B33	B34	140.00	321°17'24"
B34	B35	503.28	231°17'24"
B35	B36	106.42	121°17'24"
B36	B37	152.78	51°17'24"
B37	B38	340.00	179°38'08"
B38	B39	66.00	269°38'08"
B39	B40	94.28	359°38'08"
B40	B41	C 145.80	319°21'44"
A	148.25	R 235.00	DEL 36°08'40" LT
B41	B42	112.85	301°17'24"

FROM	TO	[DISTANCE(FT)]	AZIMUTH
B42	B43	508.87	231°17'24"
B43	B44	275.48	359°40'42"
B44	B45	66.00	269°40'42"
B45	B46	55.00	359°40'42"
B46	B47	64.16	291°11'09"
B47	B48	237.91	248°04'59"
B48	B49	32.54	155°56'06"
B49	B50	150.00	245°56'06"
B50	B51	185.00	264°16'35"
B51	B52	144.82	179°43'11"
B52	B53	66.00	269°43'17"
B53	B54	90.00	359°43'17"
B54	B55	47.01	333°44'26"
B55	B56	465.75	249°06'43"
B56	B57	49.37	214°29'07"
B57	B58	290.54	179°51'30"
B58	B59	15.01	268°12'42"
B59	B60	15.01	179°51'30"
B60	B61	36.27	185°47'15"
B61	B3610	36.27	185°47'15"
B3610	B3609	61.27	268°40'12"
B3609	E 1/4 11	1323.07	359°51'30"
E 1/4 11	B3714	40.01	88°31'00"
B3714	B1	0.64	179°40'11"

FROM	TO	[DISTANCE(FT)]	AZIMUTH
B20	B65	C 174.55	64°56'31"
A	174.99	R 2242.80	DEL 4°28'14" LT
B65	B66	C 404.44	57°32'01"
A	404.99	R 2242.80	DEL 10°20'46" LT
B66	B3867	C 30.48	51°58'17"
A	30.48	R 2242.80	DEL 0°46'43" LT
B3867	B3824	4.23	143°46'51"



PERMANENT DRAINAGE EASEMENT IN STREET
E 1/4 11 TO B3715 ADJOINS PLAT 62-37
EAST-WEST 1/4 LINE
B65 TO B3715 2157.86' 2°30'31"00"

CAST IRON MONUMENT AT QUARTER CORNER
RAMSEY COUNTY COORDINATES
X=597859.427
Y=181382.584
NAD 83(1996 ADJ)

N

E 1/4 11 TO B3610 ADJOINS PLAT 62-36

FOR BALANCE OF PAR. 349 SEE PLAT 62-36

CAST IRON MONUMENT AT SECTION CORNER

- SURVEY STANDARDS**
- The plat values, azimuths, and distances are based on the County coordinate system.
 - The boundary monuments shown on this plat have been field checked for location. The standard deviation for the monument position is 0.10 foot.
 - The county coordinates shown on this monument are based on ties to national control monuments.
 - For details of this survey contact the Surveying Section at the Minnesota Department of Transportation: METRO EAST - OAKDALE

PERMANENT DRAINAGE EASEMENT

FROM	TO	[DISTANCE(FT)]	AZIMUTH
B3714	B3715	74.30	88°31'00"
B3715	B3	31.71	159°36'59"

PERMANENT DRAINAGE EASEMENT

FROM	TO	[DISTANCE(FT)]	AZIMUTH
B3714	B3715	74.30	88°31'00"
B3715	B3	31.71	159°36'59"

PERMANENT DRAINAGE EASEMENT

FROM	TO	[DISTANCE(FT)]	AZIMUTH
B3714	B3715	74.30	88°31'00"
B3715	B3	31.71	159°36'59"

PERMANENT DRAINAGE EASEMENT

FROM	TO	[DISTANCE(FT)]	AZIMUTH
B3714	B3715	74.30	88°31'00"
B3715	B3	31.71	159°36'59"

PERMANENT DRAINAGE EASEMENT

FROM	TO	[DISTANCE(FT)]	AZIMUTH
B3714	B3715	74.30	88°31'00"
B3715	B3	31.71	159°36'59"

PERMANENT DRAINAGE EASEMENT

FROM	TO	[DISTANCE(FT)]	AZIMUTH
B3714	B3715	74.30	88°31'00"
B3715	B3	31.71	159°36'59"

PERMANENT DRAINAGE EASEMENT

FROM	TO	[DISTANCE(FT)]	AZIMUTH
B3714	B3715	74.30	88°31'00"
B3715	B3	31.71	159°36'59"

PERMANENT DRAINAGE EASEMENT

FROM	TO	[DISTANCE(FT)]	AZIMUTH
B3714	B3715	74.30	88°31'00"
B3715	B3	31.71	159°36'59"

TEMPORARY EASEMENT BOUNDARY DATA

FROM	TO	[DISTANCE(FT)]	AZIMUTH
TE1	TE2	370.26	346°56'43"
TE2	TE3	197.94	357°40'45"
TE3	TE4	29.00	87°40'45"
TE4	TE5	94.00	177°40'45"
TE5	TE6	204.00	161°54'43"
TE6	TE7	35.00	71°54'43"
TE7	TE8	16.08	106°15'03"
TE8	TE9	76.61	180°59'11"
TE9	TE10	207.78	166°56'43"
TE11	TE12	185.00	35°57'40"
TE12	TE13	189.00	0°00'00"
TE13	TE14	195.00	77°02'45"
TE14	TE1	256.22	169°35'21"

CONVENTIONAL SYMBOLS

Section Line
Quarter Line
Sixteenth Line
Property Line
R/W Boundary
Existing D.O.T. R/W Line
And Other Road R/W
Railroad R/W
Private Easement
Temporary Easement
Building Removal Easement

R/W Parcel Number
Access Control
Access Opening
Cast Iron Monument
2 1/4" x 2 1/4" Iron Tube with Cap
3/4" D.C.T. Iron Pin
Other Iron Monument
Concrete or Stone Monument
R/W Boundary Corner

DISTANCES SHOWN TO FEET (66, 80 ETC.) ARE EXACT VALUES.

SCALE IN FEET
0 50 100 200 300 400 500

PLAT NO. 62-38
C.S. 6211(36-118)901
(SHEET 1 OF 2)

DOC. NO. 197857
OFFICE OF REGISTRAR OF TITLES
RAMSEY COUNTY, MINNESOTA
I HEREBY CERTIFY THAT THIS PLAT
HAS BEEN FILED IN THIS OFFICE
ON July 10, 2006, AT 4:00 PM
IN CAB. NO. _____
Christine S. Conrad
REGISTRAR OF TITLES

DOC. NO. 3981576
OFFICE OF COUNTY RECORDER
RAMSEY COUNTY, MINNESOTA
I HEREBY CERTIFY THAT THIS PLAT
HAS BEEN FILED IN THIS OFFICE
ON July 10, 2006, AT 4:00 PM
IN CAB. NO. _____
Christine S. Conrad
COUNTY RECORDER

