

MINNESOTA DEPARTMENT OF TRANSPORTATION
RIGHT OF WAY PLAT NO. 62-36 (SHEET 1 OF 2)

CONTROL SECTION NO. 6211(36-118)901
IN THE EAST HALF OF THE SOUTHEAST QUARTER OF SECTION 11, T. 29 N., R. 22 W.,
IN THE SOUTHWEST QUARTER OF THE SOUTHWEST QUARTER OF SECTION 12, T. 29 N., R. 22 W.,
RAMSEY COUNTY, MINNESOTA

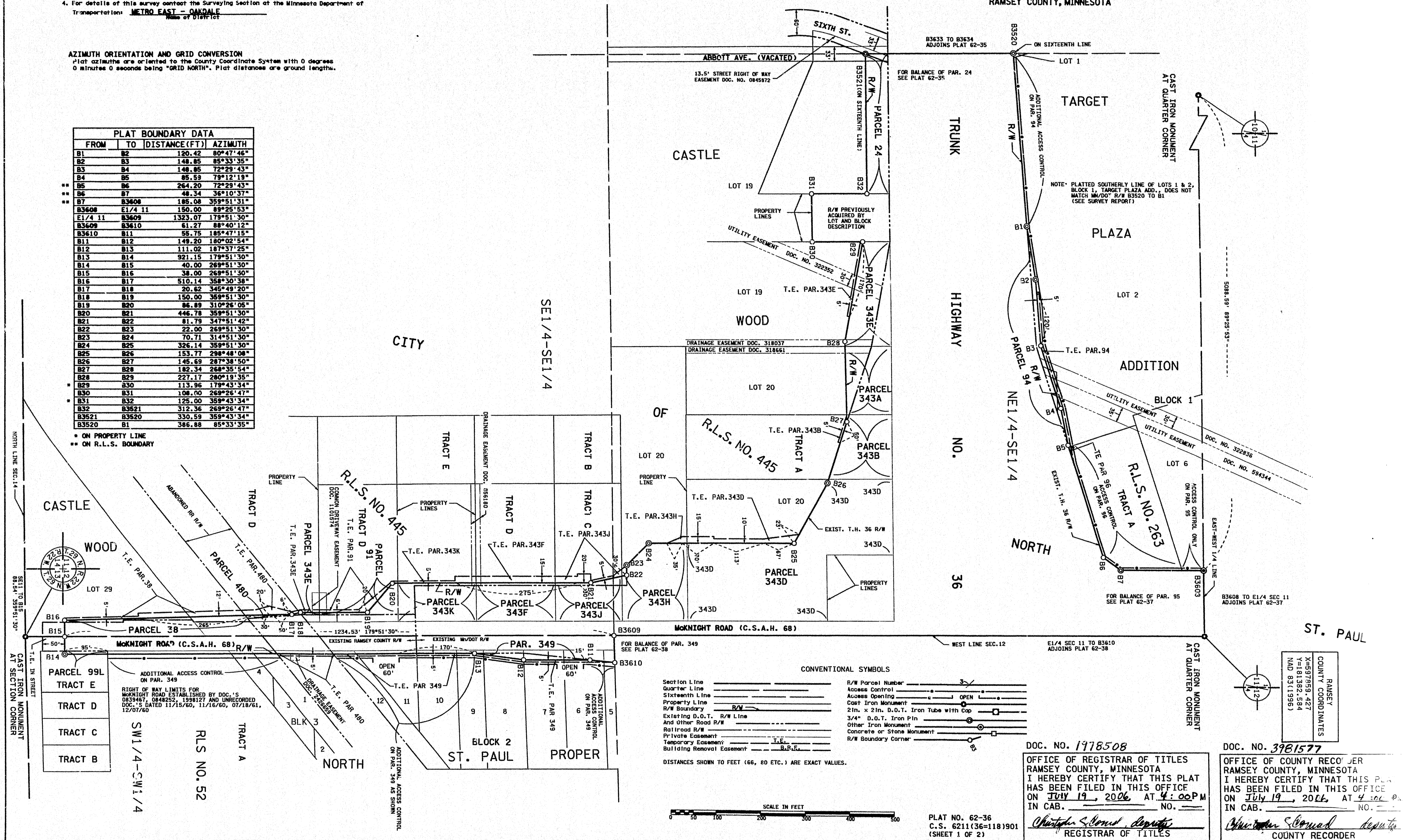
SURVEY STANDARDS

1. The plot values, azimuths, and distances are based on the County coordinate system.
2. The boundary monuments shown on this plat have been field checked for location. The standard deviation for the monument position is 0.10 feet.
3. The county coordinates shown on one monument are based on ties to national control monuments.
4. For details of this survey contact the Surveying Section at the Minnesota Department of Transportation: **METRO EAST - CANALE**
Head of District

AZIMUTH ORIENTATION AND GRID CONVERSION
Plat azimuths are oriented to the County Coordinate System with 0 degrees 0 minutes 0 seconds being "GRID NORTH". Plat distances are ground lengths.

PLAT BOUNDARY DATA			
FROM	TO	DISTANCE (FT)	AZIMUTH
B1	B2	120.42	80°47'46"
B2	B3	148.85	85°33'35"
B3	B4	148.85	72°29'43"
B4	B5	85.59	79°12'19"
B5	B6	264.20	72°29'43"
B6	B7	48.34	36°10'37"
B7	B3608	185.08	359°51'31"
B3608	E1/4 11	150.00	89°25'53"
E1/4 11	B3609	1323.07	179°51'30"
B3609	B3610	61.27	89°40'12"
B3610	B11	55.75	185°47'15"
B11	B12	149.20	180°02'54"
B12	B13	111.02	187°37'25"
B13	B14	921.15	179°51'30"
B14	B15	40.00	269°51'30"
B15	B16	38.00	269°51'30"
B16	B17	510.14	359°50'38"
B17	B18	20.62	345°49'20"
B18	B19	150.00	359°51'30"
B19	B20	86.89	310°26'05"
B20	B21	446.78	359°51'30"
B21	B22	81.79	347°51'42"
B22	B23	22.00	269°51'30"
B23	B24	70.71	314°51'30"
B24	B25	326.14	359°51'30"
B25	B26	153.77	298°48'08"
B26	B27	145.69	287°38'50"
B27	B28	182.34	268°35'54"
B28	B29	227.17	280°19'35"
B29	B30	113.96	179°43'34"
B30	B31	108.00	269°26'47"
B31	B32	125.00	359°51'30"
B32	B321	312.36	269°26'47"
B321	B3521	330.59	359°43'34"
B3521	B3520	386.88	85°33'35"
B3520	B1	386.88	85°33'35"

* ON PROPERTY LINE
** ON R.L.S. BOUNDARY



CONVENTIONAL SYMBOLS

Section Line	R/W Parcel Number
Quarter Line	Access Control
Sixteenth Line	Access Opening
Property Line	Cast Iron Monument
R/W Boundary	2 1/2" x 2 1/2" D.O.T. Iron Tube with Cap
Existing D.O.T. R/W Line	3/4" D.O.T. Iron Pin
And Other Road R/W	Other Iron Monument
Railroad R/W	Concrete or Stone Monument
Private Easement	R/W Boundary Corner
Temporary Easement	
Building Removal Easement	

DISTANCES SHOWN TO FEET (66, 80 ETC.) ARE EXACT VALUES.

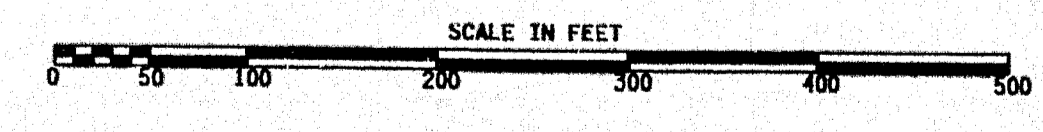
DOC. NO. 1978508
OFFICE OF REGISTRAR OF TITLES
RAMSEY COUNTY, MINNESOTA
I HEREBY CERTIFY THAT THIS PLAT
HAS BEEN FILED IN THIS OFFICE
ON JULY 19, 2006 AT 4:00 PM
IN CAB. NO. _____

Christina S. Bond
REGISTRAR OF TITLES

DOC. NO. 3981577
OFFICE OF COUNTY RECORDER
RAMSEY COUNTY, MINNESOTA
I HEREBY CERTIFY THAT THIS PLAT
HAS BEEN FILED IN THIS OFFICE
ON JULY 19, 2006 AT 4:00 PM
IN CAB. NO. _____

William S. Conrad
COUNTY RECORDER

RAMSEY COUNTY COORDINATES
X=837559.427
Y=181382.584
NAD 83(1983)



PLAT NO. 62-36
C.S. 6211(36-118)901
(SHEET 1 OF 2)

20X