

RIGHT OF WAY IN AUDITOR'S SUBDIVISION NO. 78							
PARCEL	OWNER	LOCATION	TOWNSHIP IDENTIFICATION NO.	NEW T.H. R/W	TEMPORARY EASEMENT	BUILDING EASEMENT	PERMANENT R/W INTEREST
11A	WAYNE HERR CONST. CO.	LOTS 7 & 8		4600	6513		12-1-89 FEE
11B	NORTH STAR MORTGAGE, INC	LOT 6		14541	4325		12-1-89 FEE
RIGHT OF WAY IN KELLER'S REARRANGEMENT OF LOT 4 AUDITOR'S SUBDIVISION NO. 78							
14	THE KELLER CORPORATION	LOT 1 BK 1		1636			12-1-89
RIGHT OF WAY IN ELMWOOD GARDEN FARMS							
15	RUPERT M. LEIBEL	LOT 16	185636	1210	2297		12-1-89 FEE
16	DONALD A. ROONEY	LOTS 14&15	241069	1765	3288		12-1-89 FEE
17	EDWARD A. CHRISTENSEN	LOT 13	287654	678	949		12-1-89 FEE
18	CARL F. NISSWANDT	LOT 12	270791	678	2566		12-1-89 FEE
19	ESTHER M. PALM	LOT 11	288851	828	928		12-1-89 FEE
20	FRANK J. KAPOUN	LOT 10	180143	675	875		12-1-89 FEE
RIGHT OF WAY IN ALBIN HOELLER ADDITION							
20B	JOHN F. BEUMER	LOT 2 BK 1	299819	120	309		12-1-89 FEE

I do hereby certify that this is a true copy of document No. 2212763 Eugene H. Gibbons Ramsey County Recorder By *Lea C. Malach* Deputy

This is to certify that this instrument was filed in this office on the 6 day of March A.D. 1984 at 9:50 o'clock A.M. as Document No. 753624 Eugene H. Gibbons Registrar of Titles By *Lea C. Malach* Deputy

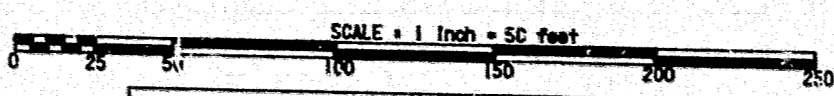
CONVENTIONAL SYMBOLS

Section Line	Building Removal Easement	B, R, E
Quarter Line	R/W Parcel Number	
Section Line	Access Control	
Property Line	Access Opening	
R/W Boundary	Cast Iron Monument or 2" C.I. Iron Pipe with Aluminum Cap	
Starting D.M.T. R/W Line	3" P.D.I. Iron Pin	
End Other Road R/W's	Other Iron Monument	
Boundary R/W	Concrete or Stone Monument	
Private Easement	R/W Boundary Corner	
Temporary Easement		

DISTANCES SHOWN TO FEET UNLESS OTHERWISE EXPRESSED UNLESS OTHERWISE NOTED.

- SURVEY STANDARDS**
- The plat values, acreage and distances are based on the project control survey system.
 - The boundary monuments shown on this plat have been field checked for location. The standard deviation for the monument position is 0.1 ft.
 - The state plane coordinates shown on this instrument are based on the national control monuments.
 - Certification of location has been filed at the County Recorder's Office and/or the County Surveyor's Office for the section corner monuments shown on this plat.
 - For details of the survey contact the Surveying and Mapping Section at the Minnesota Department of Transportation, DACTM/MP.

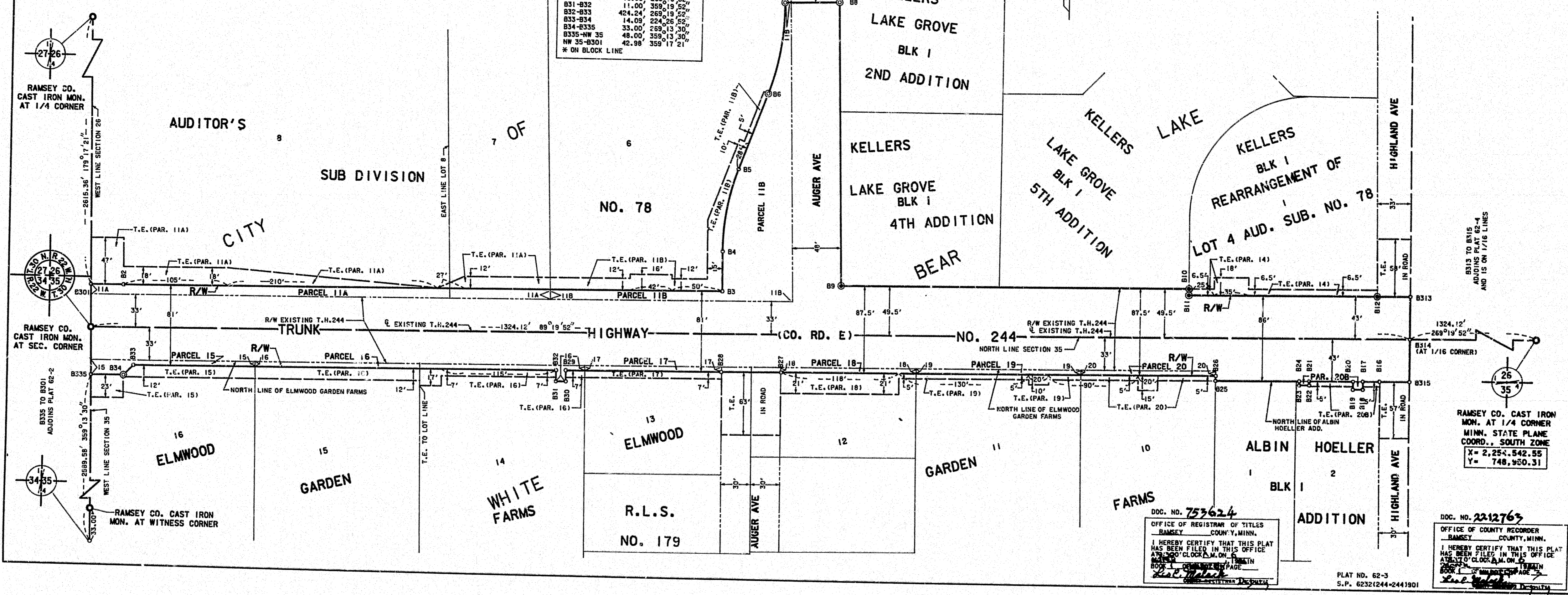
AZIMUTH ORIENTATION AND GRID CONVERSION
 Plus minute are oriented to Minnesota State Plane Coordinate System with 8 degree 30 minutes 0 seconds being 090 NORTH.
 Plus distance are ground lengths and can be converted to Minnesota State Plane Grid lengths by multiplying Plat distance by .999937



PLAT BOUNDARY DATA

POINT	DISTANCE	AZIMUTH
B301-B2	33.00'	89°17'21"
B2-B3	599.45'	89°19'52"
B3-B4	39.88'	359°17'33"
B4-B5	421.01'	84°34'37"
B5-B6	81.28'	201°18'33"
B6-B7	421.01'	84°34'37"
B7-B8	54.08'	89°17'21"
B8-B9	203.74'	176°30'55"
B9-B10	349.37'	89°19'52"
B10-B11*	6.50'	176°30'55"
B11-B12	150.23'	89°19'52"
B12-B13	33.22'	89°19'52"
B13-B14	43.00'	176°30'55"
B14-B15	43.00'	176°30'55"
B15-B16	30.00'	269°19'52"
B16-B17	16.81'	220°19'52"
B17-B18	8.00'	176°30'55"
B18-B19	10.00'	269°19'52"
B19-B20	8.00'	359°17'33"
B20-B21	45.00'	269°19'52"
B21-B22	4.00'	176°30'55"
B22-B23	10.00'	269°19'52"
B23-B24	4.00'	359°17'33"
B24-B25	84.20'	269°19'52"
B25-B26*	5.00'	359°17'33"
B26-B27	436.01'	269°19'52"
B27-B28	60.00'	269°19'52"
B28-B29	154.79'	269°19'52"
B29-B30	11.00'	176°30'55"
B30-B31	10.00'	269°19'52"
B31-B32	11.00'	359°17'33"
B32-B33	424.24'	269°19'52"
B33-B34	14.00'	224°36'52"
B34-B33S	33.00'	269°19'52"
B33S-NW 35	48.00'	359°17'33"
NW 35-B301	40.88'	359°17'21"

* ON BLOCK LINE



MINNESOTA DEPARTMENT OF TRANSPORTATION
RIGHT OF WAY PLAT NO. 62-3
 STATE PROJECT NO. 6232(244-244)901
 IN THE SOUTHWEST QUARTER OF THE SOUTHWEST QUARTER OF SECTION 26, T.30 N., R.22 W., AND IN THE NORTHWEST QUARTER OF THE NORTHWEST QUARTER OF SECTION 35, T.30 N., R.22 W., RAMSEY COUNTY, MINNESOTA

THE COMMISSIONER OF TRANSPORTATION IS HEREBY DESIGNATING THE DEFINITE LOCATION OF TRUNK HIGHWAY NO. 244 FROM TRUNK HIGHWAY NO. 61 TO MC KNIGHT ROAD

As shown on this plat prepared by the State of Minnesota Department of Transportation is hereby certified as the official plat of this project of road 244 within the designated portion of Sections 26 and 35, T.30 N., R.22 W., Ramsey County, Minnesota.

Commissioner's Order No. 68602 Date 2-22-84 Location PLATS 62-1 THRU 62-6 Nature of Interest Definite location, with easements and building removal easement

Recommended for Certification: Certified: Richard E. Johnson, Commissioner of Transportation; Date 2-22-84; By: J. C. Wankel, Director of R/W Operations; Date 2-22-84

I hereby certify that this plat was prepared by me or under my direct supervision and that I am a duly Licensed Land Surveyor under the Laws of the State of Minnesota and that this plat meets the requirements of Minnesota Statutes, Chapter 360B, and that I am a duly Licensed Land Surveyor under the Laws of the State of Minnesota and that this plat meets the requirements of Minnesota Statutes, Chapter 360B, and that I am a duly Licensed Land Surveyor under the Laws of the State of Minnesota and that this plat meets the requirements of Minnesota Statutes, Chapter 360B.

Certified by: *John J. Johnson* 10/16/80 2-21-84
 Director of Surveying & Mapping
 Date

Certified by: *David D. Johnson* 1/15/82 2/6/84
 Director of Land Surveying
 Date

DOC. NO. 753624
 OFFICE OF REGISTRAR OF TITLES
 RAMSEY COUNTY, MINN.
 I HEREBY CERTIFY THAT THIS PLAT HAS BEEN FILED IN THIS OFFICE AT 9:50 O'CLOCK A.M. ON 03 MAR 1984

DOC. NO. 2212763
 OFFICE OF COUNTY RECORDER
 RAMSEY COUNTY, MINN.
 I HEREBY CERTIFY THAT THIS PLAT HAS BEEN FILED IN THIS OFFICE AT 9:50 O'CLOCK A.M. ON 03 MAR 1984

PLAT NO. 62-3
 S.P. 6232(244-244)901