

62
23

MINNESOTA DEPARTMENT OF TRANSPORTATION
RIGHT OF WAY PLAT NO. 62-23 (SHEET 1 OF 2)

CONTROL SECTION NO. 6280(35E=390)907
IN THE SOUTH HALF OF THE SOUTHEAST QUARTER OF SECTION 32, T.30 N., R.22 W.,
IN THE SOUTHEAST QUARTER OF THE SOUTHWEST QUARTER OF SECTION 32, T.30 N., R.22 W.,
IN THE NORTHWEST QUARTER OF THE NORTHWEST QUARTER OF SECTION 5, T.29 N., R.22 W.,
IN THE NORTHWEST QUARTER OF THE NORTHEAST QUARTER OF SECTION 5, T.29 N., R.22 W.,
RAMSEY COUNTY, MINNESOTA

PLAT BOUNDARY DATA				PLAT BOUNDARY DATA			
FROM	TO	DISTANCE (FT)	AZIMUTH	FROM	TO	DISTANCE (FT)	AZIMUTH
B1	B2	697.10	81°38'08"				
B2	B3	79.86	359°45'35"				
B3	B4	163.86	270°02'01"				
B4	B5	66.00	0°13'33"				
B5	B6	48.36	90°02'01"				
B6	B7	0.47	359°47'33"				
B7	B8	C 285.23	84°23'30"				
A 285.50	R 1876.84	DEL	8°42'57" LT				
B8	B9	175.92	66°03'25"				
B9	B10	210.62	5°14'29"				
B10	B11	204.43	359°47'33"				
B11	B12	49.50	89°47'33"				
B12	B13	49.50	89°47'33"				
B13	B14	204.72	179°47'33"				
B14	B15	16.50	269°52'51"				
B15	B16	252.56	166°44'57"				
B16	B17	131.75	179°47'33"				
B17	B18	75.47	89°55'01"				
B18	B19	902.41	81°38'08"				
B19	B2320	210.24	79°59'38"				
B2320	B2321	378.58	151°47'46"				
B2321	B22	C 624.60	266°12'04"				
A 624.68	R 11359.16	DEL	3°09'03" LT				
B22	B23	C 25.27	264°33'43"				
A 25.27	R 11359.16	DEL	0°07'39" LT				
B23	B24	133.84	179°23'37"				
B24	B27	24.02	89°52'51"				
B27	B28	38.63	89°52'51"				
B28	B29	33.00	179°52'51"				
B29	B30	33.00	179°52'51"				
B30	B31	180.00	269°52'51"				
B31	B32	26.92	269°52'51"				
B32	B33	63.00	269°52'51"				
B33	B34	36.76	269°52'51"				
B34	B35	9.00	179°52'51"				
B35	B36	8.00	179°52'51"				
* ON LOT/BLOCK LINE							

ACRES			
FROM	TO	DISTANCE (FT)	AZIMUTH
A 37.25	R 1855.72	DEL	1°09'00" LT
B56	B57	C 20.09	270°55'54"
A 20.09	R 1855.72	DEL	0°37'13" LT
B57	B58	C 85.18	269°18'23"
A 85.19	R 1855.72	DEL	2°37'49" LT
B58	B59	C 20.01	267°40'56"
A 20.01	R 1855.72	DEL	0°37'05" LT
B59	B60	C 322.07	262°23'42"
A 322.48	R 1855.72	DEL	9°57'24" LT
B60	B2361	615.48	257°25'03"
B2361	B2362	293.92	359°03'44"
B2362	B2363	159.95	359°51'31"
B2363	B1	228.03	80°24'29"

PERMANENT DRAINAGE EASEMENT			
FROM	TO	DISTANCE (FT)	AZIMUTH
B53	B71	3.57	175°34'21"
B71	B72	20.00	265°34'21"
B72	B54	5.96	355°34'21"

PERMANENT DRAINAGE EASEMENT			
FROM	TO	DISTANCE (FT)	AZIMUTH
B56	B73	21.96	175°34'21"
B73	B74	20.00	265°34'21"
B74	B57	23.84	355°34'21"

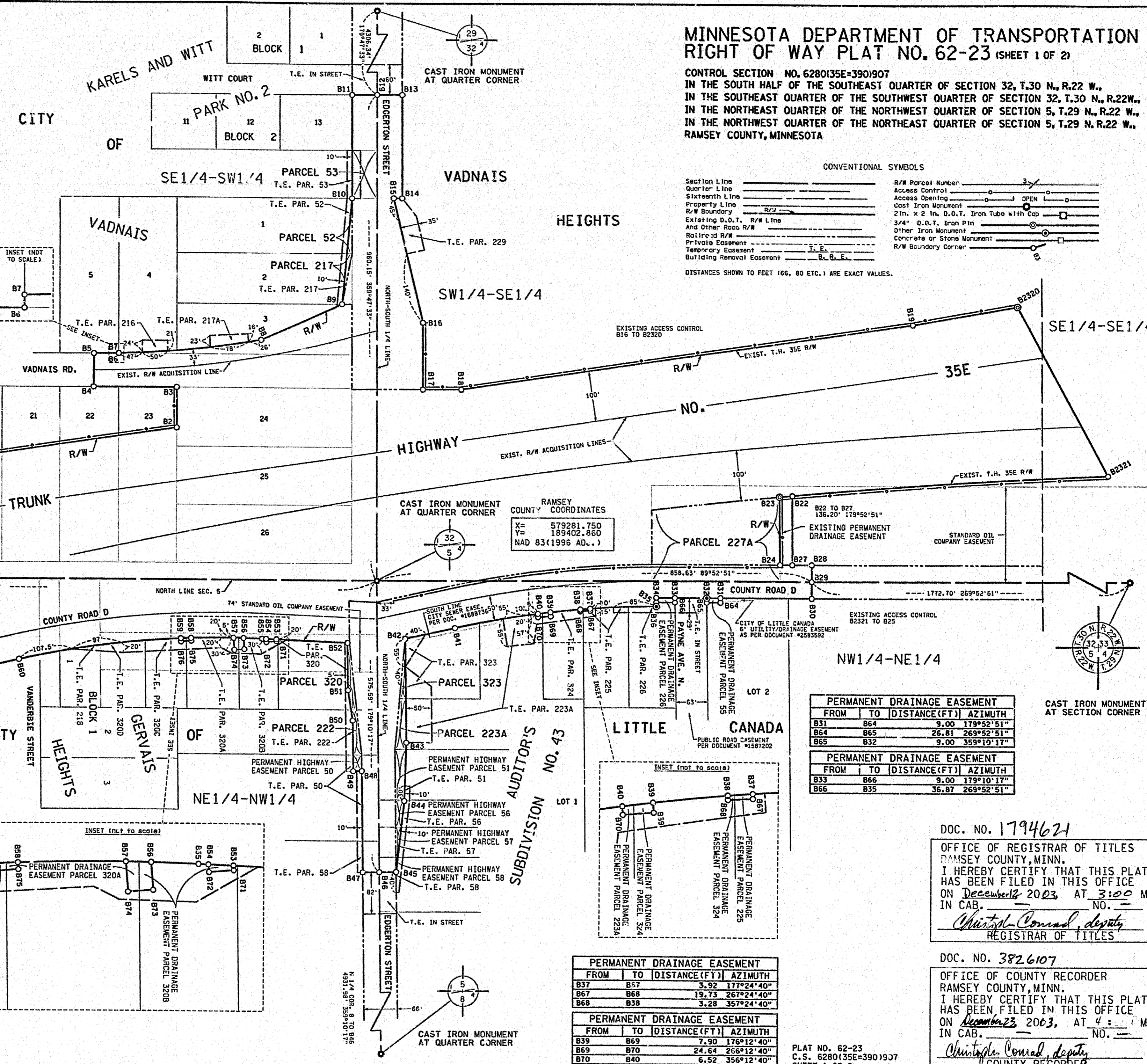
PERMANENT DRAINAGE EASEMENT			
FROM	TO	DISTANCE (FT)	AZIMUTH
B58	B75	5.39	175°34'21"
B75	B76	20.00	265°34'21"
B76	B59	6.12	355°34'21"

SURVEY STANDARDS

- The plat values, azimuths, and distances are based on the County coordinate system.
- The boundary monuments shown on this plat have been field checked for location. The standard deviation for the monument position is 0.10 foot.
- The county coordinates shown on one monument are based on ties to national control monuments.
- For details of this survey contact the Surveying Section at the Minnesota Department of Transportation - METRO EAST - OAKDALE
Name of District

AZIMUTH ORIENTATION AND GRID CONVERSION
Plat azimuths are oriented to the County Coordinate System with 0 degrees 0 minutes 0 seconds being "GRID NORTH". Plat distances are ground lengths.

SCALE IN FEET
0 50 100 200 300 400 500



CONVENTIONAL SYMBOLS

Section Line	—
Quarter Line	—
Sixteenth Line	—
Property Line	—
R/W Boundary	—
Existing D.O.T. R/W Line	—
And Other Road R/W	—
Railroad R/W	—
Private Easement	—
Temporary Easement	—
Building Removal Easement	—
R/W Parcel Number	—
Access Control	—
Access Opening	—
Cast Iron Monument	—
2 1/2" x 2 1/2" D.O.T. Iron Tube with Cap	—
3/4" D.O.T. Iron Pin	—
Other Iron Monument	—
Concrete or Stone Monument	—
R/W Boundary Corner	—

DISTANCES SHOWN TO FEET (66, 80 ETC.) ARE EXACT VALUES.

PERMANENT DRAINAGE EASEMENT			
FROM	TO	DISTANCE (FT)	AZIMUTH
B31	B64	9.00	179°52'51"
B64	B65	26.81	269°52'51"
B65	B32	9.00	359°10'17"

PERMANENT DRAINAGE EASEMENT			
FROM	TO	DISTANCE (FT)	AZIMUTH
B33	B66	9.00	179°10'17"
B66	B35	36.87	269°52'51"

PERMANENT DRAINAGE EASEMENT			
FROM	TO	DISTANCE (FT)	AZIMUTH
B37	B57	3.92	177°24'40"
B67	B68	19.73	267°24'40"
B68	B38	3.28	357°24'40"

PERMANENT DRAINAGE EASEMENT			
FROM	TO	DISTANCE (FT)	AZIMUTH
B39	B69	7.90	176°12'40"
B69	B70	24.64	266°12'40"
B70	B40	6.52	356°12'40"

DOC. NO. 1794621
OFFICE OF REGISTRAR OF TITLES
RAMSEY COUNTY, MINN.
I HEREBY CERTIFY THAT THIS PLAT
HAS BEEN FILED IN THIS OFFICE
ON December 18, 2023, AT 3:00 M
IN CAB. NO. —
Christoph Conrad, deputy
REGISTRAR OF TITLES

DOC. NO. 3826107
OFFICE OF COUNTY RECORDER
RAMSEY COUNTY, MINN.
I HEREBY CERTIFY THAT THIS PLAT
HAS BEEN FILED IN THIS OFFICE
ON December 23, 2023, AT 4:01 M
IN CAB. NO. —
Christoph Conrad, deputy
COUNTY RECORDER