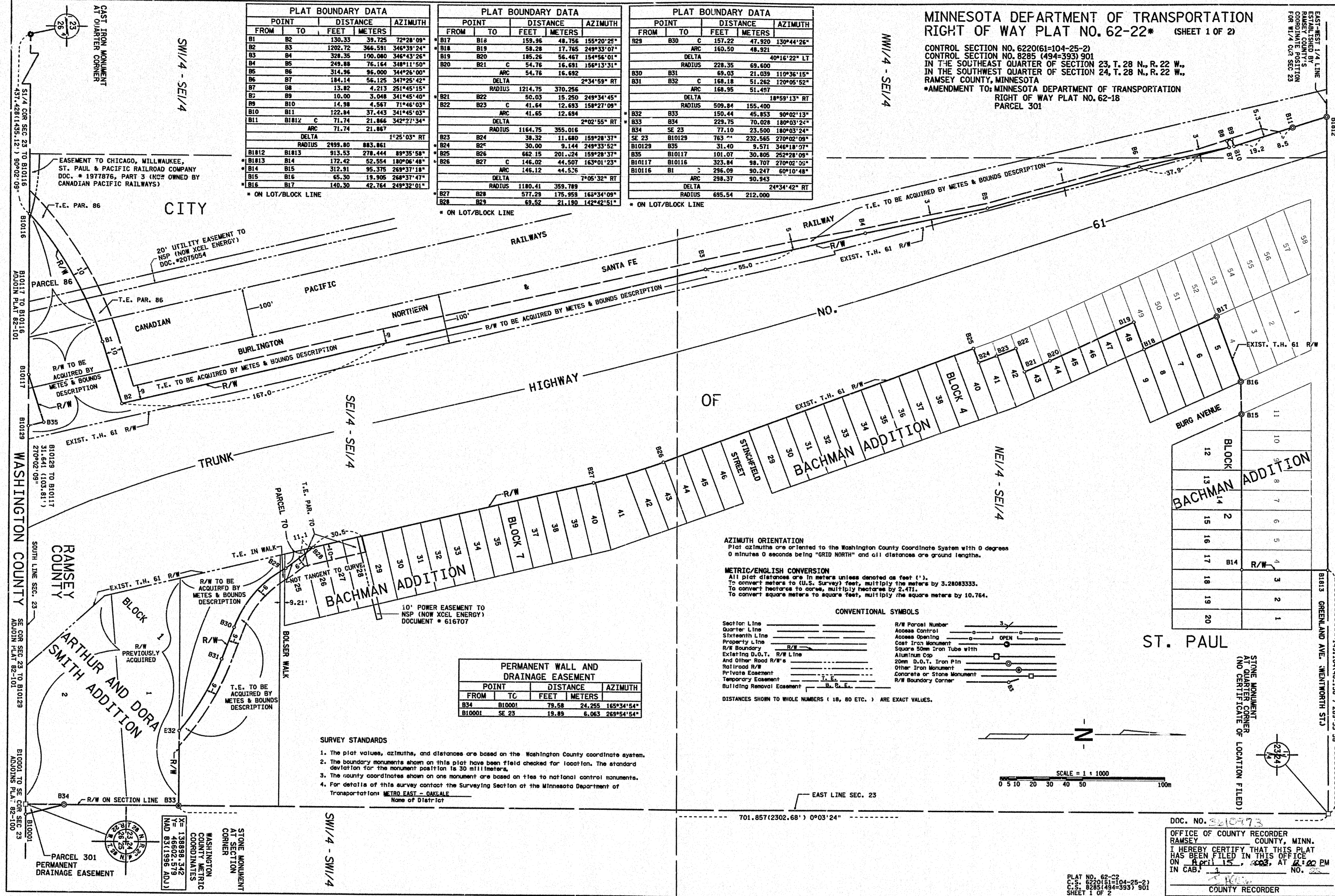


62-22

BK. 1 Pg. 22



PLAT BOUNDARY DATA			
POINT FROM	POINT TO	DISTANCE FEET METERS	AZIMUTH
B1	B2	130.33 39.725	122°28'08"
B2	B3	1292.72 366.591	346°33'24"
B3	B4	328.35 100.060	346°43'26"
B4	B5	249.88 76.164	348°11'50"
B5	B6	314.96 86.000	344°26'00"
B6	B7	184.14 56.125	347°25'40"
B7	B8	13.82 4.213	251°45'15"
B7	B9	10.00 3.048	341°45'40"
B9	B10	14.98 4.567	71°46'03"
B10	B11	122.84 37.445	341°45'03"
B11	B112	71.74 21.866	342°27'34"
B11	B113	71.74 21.867	1°25'03" RT
B112	B113	2999.80 883.861	
B112	B113	913.53 278.444	89°35'58"
B113	B14	172.42 52.554	189°06'40"
B14	B15	315.81 95.376	289°31'18"
B15	B16	65.30 19.906	268°37'47"
B16	B17	140.30 42.764	249°32'01"

PLAT BOUNDARY DATA			
POINT FROM	POINT TO	DISTANCE FEET METERS	AZIMUTH
B17	B18	159.96 48.756	155°20'25"
B18	B19	59.29 17.765	249°33'01"
B19	B20	185.26 56.467	154°56'01"
B20	B21	54.76 16.691	158°13'51"
B21	B22	54.76 16.692	2°34'59" RT
B22	B23	50.03 15.250	249°34'45"
B23	B24	41.64 12.693	158°27'09"
B23	B24	41.65 12.694	2°02'55" RT
B24	B25	1164.75 355.016	
B24	B25	38.32 11.680	158°28'37"
B24	B26	30.00 9.144	249°33'52"
B25	B26	662.15 201.124	159°28'37"
B26	B27	146.02 44.507	163°01'23"
B26	B27	146.12 44.525	7°05'32" RT
B27	B28	1180.41 359.789	
B27	B28	577.29 175.955	162°34'08"
B28	B29	69.52 21.190	142°42'51"

PLAT BOUNDARY DATA			
POINT FROM	POINT TO	DISTANCE FEET METERS	AZIMUTH
B29	B30	157.22 47.920	130°44'26"
B30	B31	160.50 48.921	
B31	B32	69.03 21.039	110°36'15"
B31	B32	160.18 51.262	120°05'52"
B32	B33	160.95 51.497	
B33	B34	509.84 155.400	
B33	B34	150.44 45.853	90°02'13"
B34	B35	229.75 70.028	180°03'24"
B34	B35	77.10 23.500	180°03'24"
B35	B36	763.11 232.565	270°02'09"
B36	B37	31.40 9.571	346°18'07"
B37	B38	101.07 30.806	252°28'08"
B38	B39	323.84 98.707	270°02'02"
B39	B40	295.09 90.247	60°10'48"
B40	B41	298.37 90.543	
B41	B42	695.54 212.000	

PERMANENT WALL AND DRAINAGE EASEMENT			
POINT FROM	POINT TO	DISTANCE FEET METERS	AZIMUTH
B34	B10001	79.58 24.235	165°34'54"
B10001	SE 23	19.89 6.063	263°54'54"

- SURVEY STANDARDS**
1. The plot values, azimuths, and distances are based on the Washington County coordinate system.
  2. The boundary monuments shown on this plat have been field checked for location. The standard deviation for the monument position is 30 millimeters.
  3. The county coordinates shown on one monument are based on ties to national control monuments.
  4. For details of this survey contact the Surveying Section at the Minnesota Department of Transportation: METRO EAST - OAKLAKE, Name of District

DOC. NO. 221073  
 OFFICE OF COUNTY RECORDER  
 RAMSEY COUNTY, MINN.  
 I HEREBY CERTIFY THAT THIS PLAT  
 HAS BEEN FILED IN THIS OFFICE  
 ON April 15, 2022, AT 2:00 PM  
 IN CAB. NO. 221073  
 COUNTY RECORDER

24X