

1/18

MINNESOTA DEPARTMENT OF TRANSPORTATION
 RIGHT OF WAY PLAT NO. 62-18 (SHEET 1 OF 2)

CONTROL SECTION NO. 6220(61=104-25-2)
 CONTROL SECTION NO. 8285 (494-393) 901
 IN THE SOUTHWEST QUARTER OF SECTION 23, T. 28 N., R. 22 W.,
 IN THE SOUTHWEST QUARTER OF SECTION 24, T. 28 N., R. 22 W.,
 RAMSEY COUNTY, MINNESOTA

PLAT BOUNDARY DATA				
POINT FROM	POINT TO	DISTANCE FEET	DISTANCE METERS	AZIMUTH
B1	B2	130.33	33.725	72°28'09"
B2	B3	1202.72	366.591	346°39'24"
B3	B4	328.35	100.080	346°43'26"
B4	B5	249.88	76.164	348°11'50"
B5	B6	314.96	96.000	344°26'00"
B6	B7	184.14	56.125	347°25'42"
B7	B8	13.82	4.213	251°45'15"
B8	B9	10.00	3.048	341°45'40"
B9	B10	14.98	4.567	71°46'03"
B10	B11	122.84	37.443	341°45'03"
B11	B112	71.74	21.866	342°27'34"
B11	C	71.74	21.867	
DELTA		2899.80	883.861	1°25'03" RT
RADIUS		2899.80	883.861	
B112	B113	913.53	278.444	89°35'58"
B113	B14	172.42	52.554	180°06'48"
B14	B15	312.91	95.375	269°37'18"
B15	B16	65.30	19.805	268°37'47"
B16	B17	140.30	42.764	249°32'01"

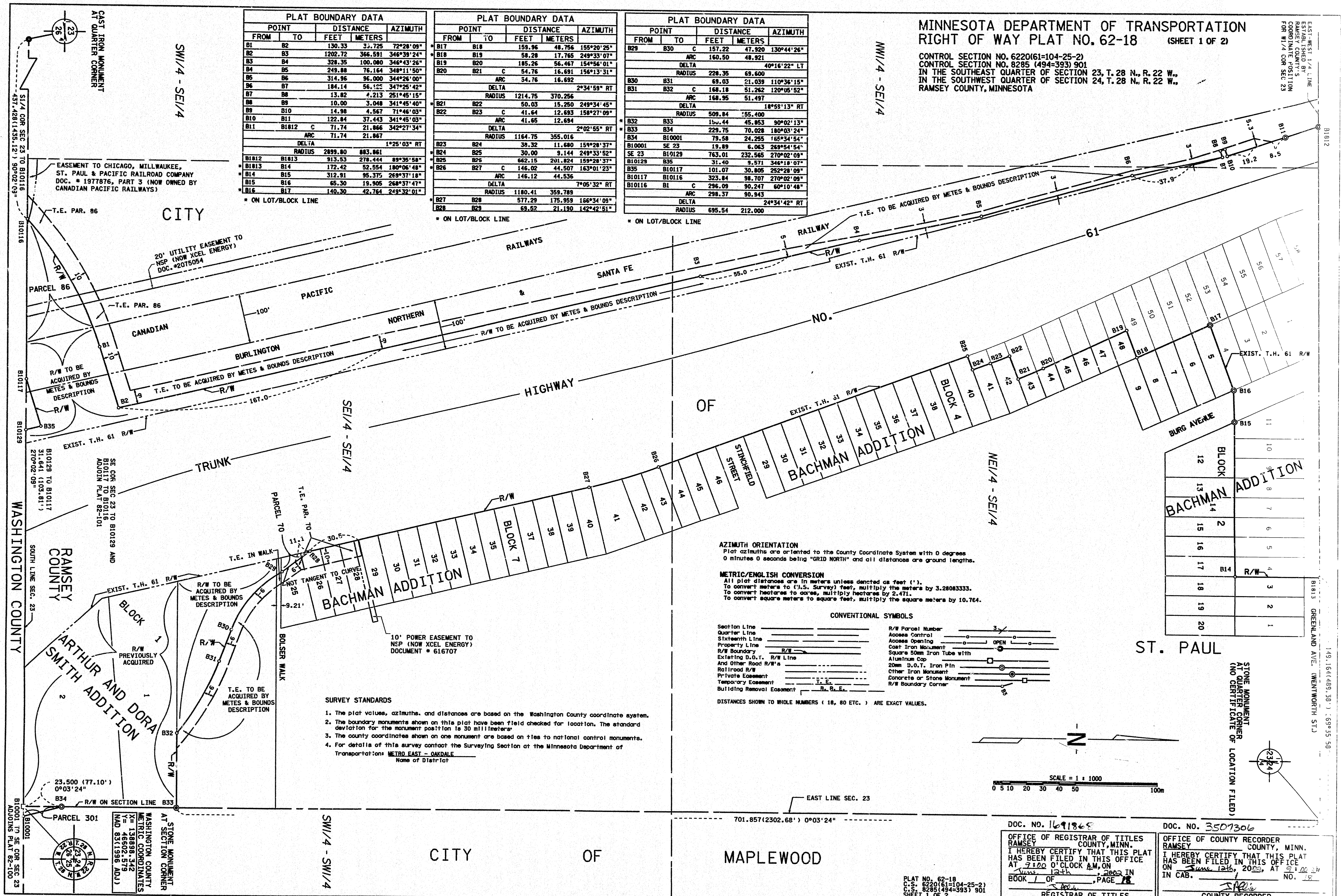
* ON LOT/BLOCK LINE

PLAT BOUNDARY DATA				
POINT FROM	POINT TO	DISTANCE FEET	DISTANCE METERS	AZIMUTH
B17	B18	159.96	48.756	155°20'25"
B18	B19	58.28	17.765	249°33'07"
B19	B20	185.26	56.467	154°56'01"
B20	B21	54.76	16.691	156°13'31"
B20	C	34.76	10.602	
DELTA		1214.75	370.256	2°34'59" RT
RADIUS		1214.75	370.256	
B21	B22	50.03	15.250	249°34'45"
B22	B23	41.64	12.693	158°27'09"
B23	C	41.65	12.694	
DELTA		1164.75	355.016	2°02'55" RT
RADIUS		1164.75	355.016	
B23	B24	39.32	11.680	159°28'37"
B24	B25	30.00	9.144	249°33'52"
B25	B26	662.15	201.824	159°28'37"
B26	B27	146.02	44.507	163°01'23"
B27	C	146.12	44.536	
DELTA		1180.41	359.789	7°05'32" RT
RADIUS		1180.41	359.789	
B27	B28	577.29	175.959	166°34'09"
B28	B29	69.52	21.190	142°42'51"

* ON LOT/BLOCK LINE

PLAT BOUNDARY DATA				
POINT FROM	POINT TO	DISTANCE FEET	DISTANCE METERS	AZIMUTH
B29	B30	157.22	47.920	130°44'26"
B30	C	160.50	48.921	
DELTA		228.35	69.600	40°16'22" LT
RADIUS		228.35	69.600	
B30	B31	69.03	21.039	110°36'15"
B31	B32	168.18	51.262	120°06'52"
B31	C	168.95	51.497	
DELTA		509.84	155.400	18°55'13" RT
RADIUS		509.84	155.400	
B32	B33	150.44	45.853	90°02'13"
B33	B34	229.75	70.028	180°03'24"
B34	B10001	79.58	24.255	165°34'54"
B10001	SE 23	19.89	6.063	269°54'54"
SE 23	B10129	763.01	232.565	270°02'09"
B10129	B35	31.40	9.571	346°18'07"
B35	B10117	101.07	30.805	252°28'09"
B10117	B10116	323.84	98.707	270°02'09"
B10116	B1	298.37	90.943	60°10'48"
B1	C	298.37	90.943	
DELTA		695.54	212.000	24°34'42" RT
RADIUS		695.54	212.000	

* ON LOT/BLOCK LINE



AZIMUTH ORIENTATION
 Plat azimuths are oriented to the County Coordinate System with 0 degrees 0 minutes 0 seconds being "GRID NORTH" and all distances are ground lengths.

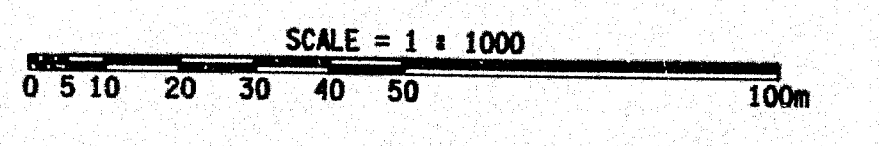
METRIC/ENGLISH CONVERSION
 All plat distances are in meters unless denoted as feet ('').
 To convert meters to (U.S. Survey) feet, multiply the meters by 3.28083333.
 To convert hectares to acres, multiply hectares by 2.471.
 To convert square meters to square feet, multiply the square meters by 10.764.

CONVENTIONAL SYMBOLS

Section Line	_____	R/W Parcel Number	_____
Quarter Line	_____	Access Control	_____
Sixteenth Line	_____	Access Opening	_____
Property Line	_____	Cast Iron Monument	_____
R/W Boundary	_____	Square 50mm Iron Tube with	_____
Existing D.O.T. R/W Line	_____	Aluminum Cap	_____
And Other Road R/W's	_____	20mm D.O.T. Iron Pin	_____
Railroad R/W	_____	Other Iron Monument	_____
Private Easement	_____	Concrete or Stone Monument	_____
Temporary Easement	_____	R/W Boundary Corner	_____
Building Removal Easement	_____		

DISTANCES SHOWN TO WHOLE NUMBERS (18, 80 ETC.) ARE EXACT VALUES.

- SURVEY STANDARDS**
- The plat values, azimuths, and distances are based on the Washington County coordinate system.
 - The boundary monuments shown on this plat have been field checked for location. The standard deviation for the monument position is 30 millimeters.
 - The county coordinates shown on one monument are based on ties to national control monuments.
 - For details of this survey contact the Surveying Section at the Minnesota Department of Transportation: METRO EAST - OAKDALE
 Name of District _____



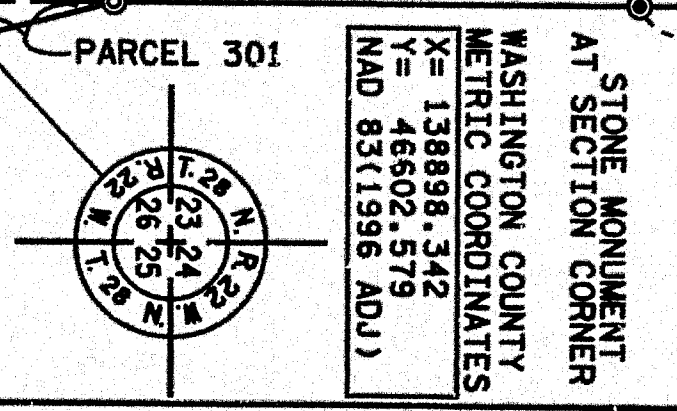
DOC. NO. 1691868 DOC. NO. 3507306

OFFICE OF REGISTRAR OF TITLES
 RAMSEY COUNTY, MINN.
 I HEREBY CERTIFY THAT THIS PLAT
 HAS BEEN FILED IN THIS OFFICE
 AT 9:00 O'CLOCK A.M. ON
 June 12th, 2003 IN
 BOOK 1 OF _____ PAGE 78
 REGISTRAR OF TITLES

OFFICE OF COUNTY RECORDER
 RAMSEY COUNTY, MINN.
 I HEREBY CERTIFY THAT THIS PLAT
 HAS BEEN FILED IN THIS OFFICE
 ON June 12th, 2003 AT 9:00 AM
 IN CAB. NO. 18
 COUNTY RECORDER

PLAT NO. 62-18
 C.S. 6220(61=104-25-2)
 8285(494-393) 901
 SHEET 1 OF 2

CITY OF MAPLEWOOD



STONE MONUMENT
 AT SECTION CORNER
 WASHINGTON COUNTY
 METRIC COORDINATES
 X = 138898.342
 Y = 46502.579
 NAD 83(1986 ADJ)