

MINNESOTA DEPARTMENT OF TRANSPORTATION
RIGHT OF WAY PLAT NO. 62-17 (SHEET 1 OF 2)
CONTROL SECTION NO. 6280(35E)=390/909
IN GOVERNMENT LOTS 3, 4 & 5 OF SECTION 14, T.28 N., R.23 W.,
IN GOVERNMENT LOT 1 OF SECTION 23, T.28 N., R.23 W.,
RAMSEY COUNTY, MINNESOTA

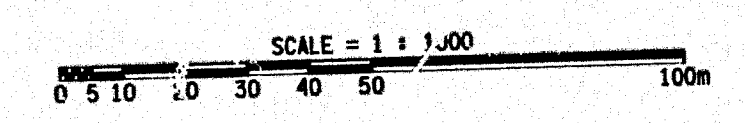
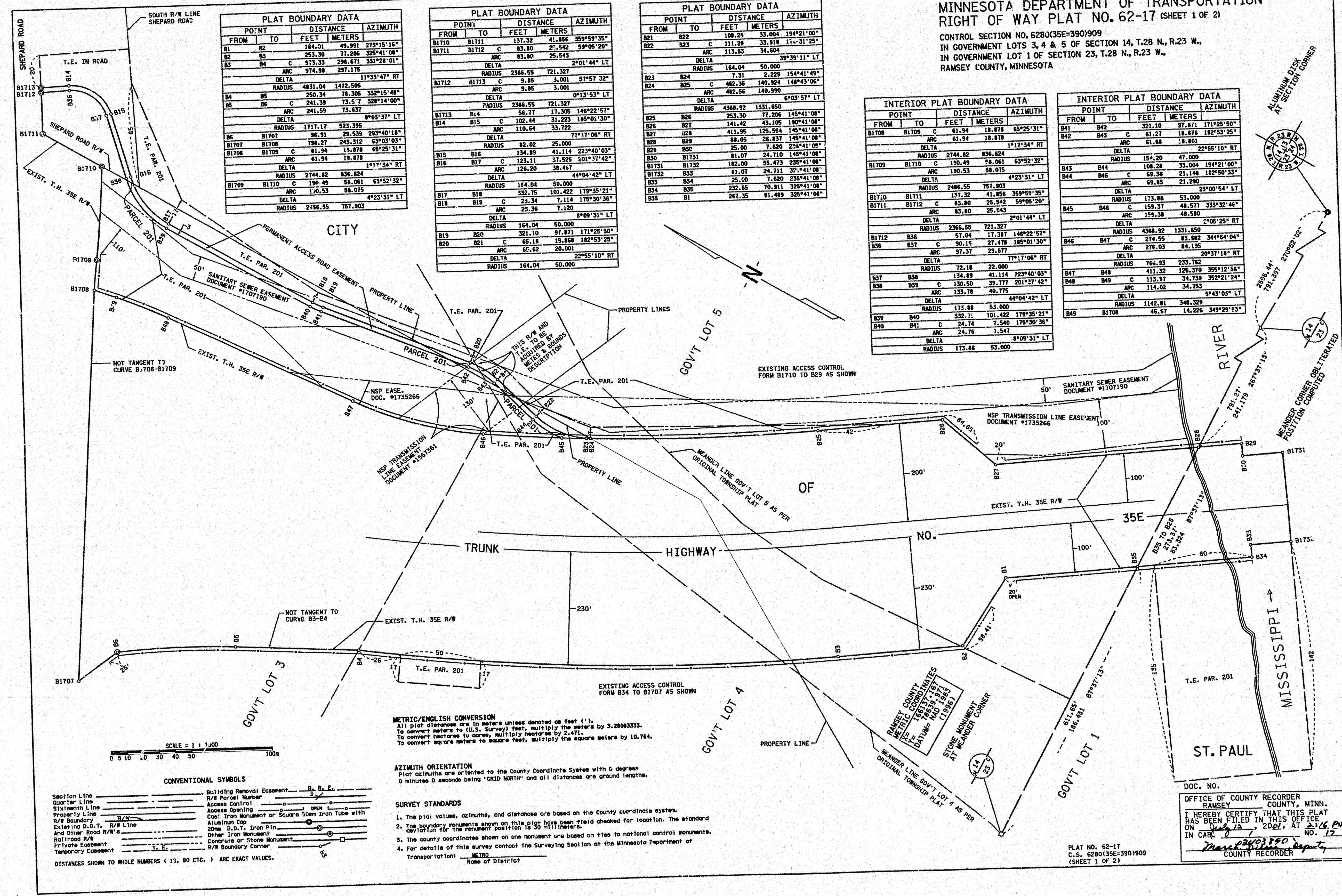
PLAT BOUNDARY DATA table with columns: POINT, DISTANCE, AZIMUTH, FROM, TO, FEET, METERS. Includes data for points B1 through B109.

PLAT BOUNDARY DATA table with columns: POINT, DISTANCE, AZIMUTH, FROM, TO, FEET, METERS. Includes data for points B110 through B200.

PLAT BOUNDARY DATA table with columns: POINT, DISTANCE, AZIMUTH, FROM, TO, FEET, METERS. Includes data for points B205 through B335.

INTERIOR PLAT BOUNDARY DATA table with columns: POINT, DISTANCE, AZIMUTH, FROM, TO, FEET, METERS. Includes data for points B1708 through B1712.

INTERIOR PLAT BOUNDARY DATA table with columns: POINT, DISTANCE, AZIMUTH, FROM, TO, FEET, METERS. Includes data for points B41 through B49.



CONVENTIONAL SYMBOLS table listing symbols for Section Line, Quarter Line, Sixteenth Line, Property Line, R/W Boundary, Existing D.O.T. R/W Line, And Other Road R/W's, Railroad R/W, Private Easement, Temporary Easement, Building Removal Easement, R/W Parcel Number, Access Control, Access Opening, Coal Iron Monument or Square 50mm Iron Tube with Aluminum Cap, 20mm D.O.T. Iron Pin, Other Iron Monument, Concrete or Stone Monument, R/W Boundary Corner.

METRIC/ENGLISH CONVERSION
All plat distances are in meters unless denoted as feet ('').
To convert meters to (U.S. Survey) feet, multiply the meters by 3.2808333.
To convert feet to meters, multiply the feet by 0.3048.
To convert square meters to square feet, multiply the square meters by 10.764.

AZIMUTH ORIENTATION
Plat azimuths are oriented to the County Coordinate System with 0 degree 0 minutes 0 seconds being "GRID NORTH" and all distances are ground lengths.

- SURVEY STANDARDS
- The plat values, azimuths, and distances are based on the County coordinate system.
 - The boundary monuments shown on this plat have been field checked for location. The standard deviation for the monument position is 1/1000th of the distance.
 - The county coordinates shown on one monument are based on ties to national control monuments.
 - For details of this survey contact the Surveying Section at the Minnesota Department of Transportation.

DOC. NO. _____
OFFICE OF COUNTY RECORDER
RAMSEY COUNTY, MINN.
I HEREBY CERTIFY THAT THIS PLAT
HAS BEEN FILED IN THIS OFFICE
ON Nov 12 2021 AT 2:16 PM
IN CASE NO. 23403790 NO. 17
Mason
COUNTY RECORDER

PLAT NO. 62-17
C.S. 6280(35E)=390/909
(SHEET 1 OF 2)