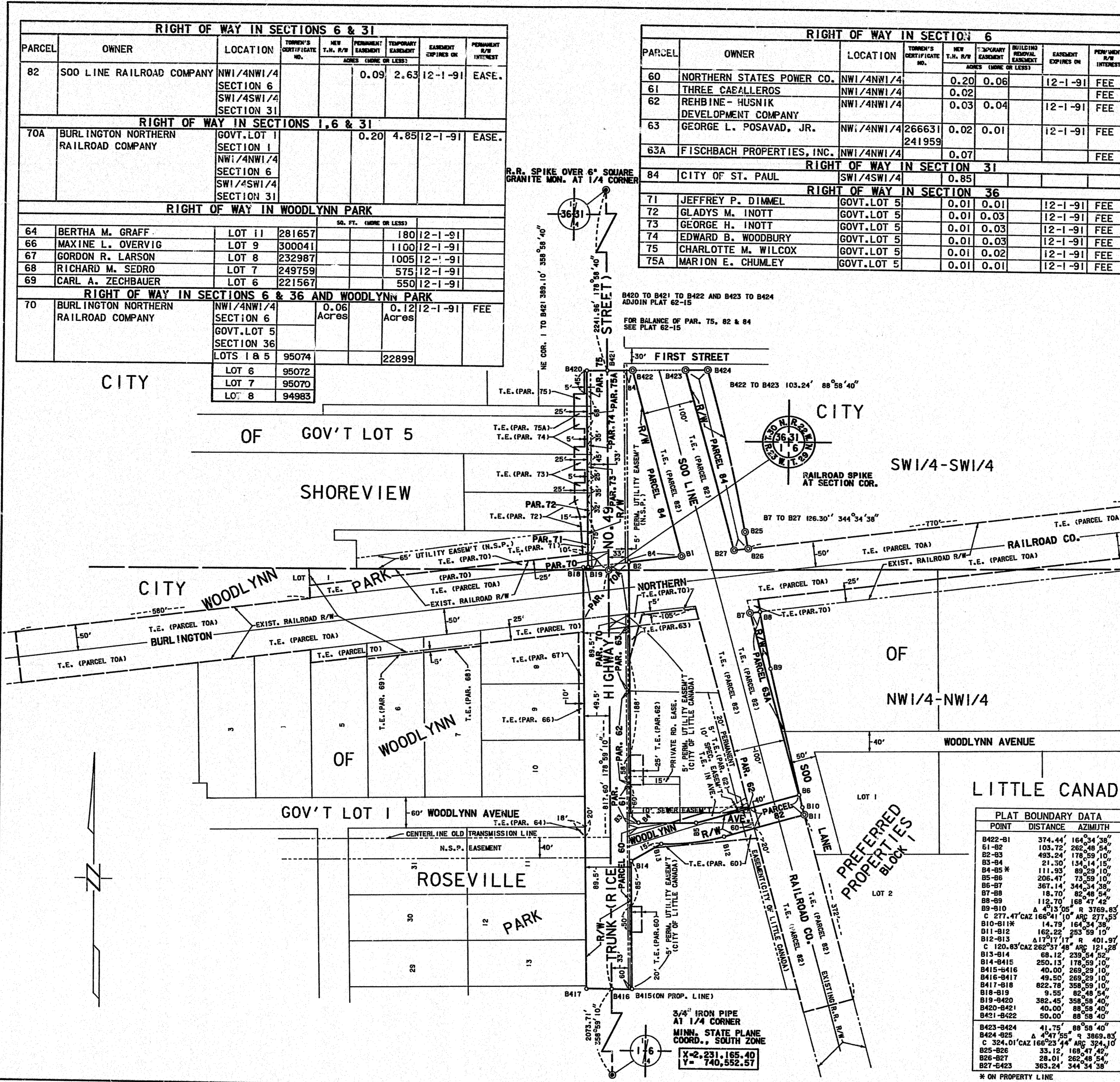


OFFICIAL



**MINNESOTA DEPARTMENT OF TRANSPORTATION
RIGHT OF WAY PLAT NO. 62-14**

STATE PROJECT NO. 6214(49-126)902
 IN THE SOUTHWEST QUARTER OF SECTION 31, T. 30 N., R. 22 W.,
 IN GOVERNMENT LOT 5 OF SECTION 36, T. 30 N., R. 23 W.,
 IN GOVERNMENT LOT 1 OF SECTION 36, T. 29 N., R. 23 W., AND
 IN THE NORTHWEST QUARTER OF SECTION 6, T. 29 N., R. 22 W.,
 RAMSEY COUNTY, MINNESOTA

THE COMMISSIONER OF TRANSPORTATION IS HEREBY DESIGNATING THE DEFINITE LOCATION OF TRUNK HIGHWAY NO. 49 FROM 0.9 MILE NORTH TO 1.5 MILES NORTH OF COUNTY ROAD C.

As shown on this plat prepared by the State of Minnesota Department of Transportation in hereby certified as the true and correct location of the right-of-way line and all other lines shown on this plat are shown for information only.

Commissioner's Order No. 70557 Location PLAT 62-14 Nature of Interest Definite location, width, access, temporary easement, and boundary removal/cessment.

Recommended for Certification: Certified: *Richard R. Braun*
Richard R. Braun
 Commissioner of Transportation

By *F. C. Marshall*
F. C. Marshall
 Director of R/W Operations

By *F. C. Marshall*
F. C. Marshall
 Director of R/W Operations

Herby certify that this plat was prepared by me or under my direct supervision and that I am a duly registered Land Surveyor under the Laws of the State of Minnesota and that this plat meets requirements of Minnesota Statutes, sections 369.01, 369.02, 369.03, 369.04, 369.05, 369.06, 369.07, 369.08, 369.09, 369.10, 369.11, 369.12, 369.13, 369.14, 369.15, 369.16, 369.17, 369.18, 369.19, 369.20, 369.21, 369.22, 369.23, 369.24, 369.25, 369.26, 369.27, 369.28, 369.29, 369.30, 369.31, 369.32, 369.33, 369.34, 369.35, 369.36, 369.37, 369.38, 369.39, 369.40, 369.41, 369.42, 369.43, 369.44, 369.45, 369.46, 369.47, 369.48, 369.49, 369.50, 369.51, 369.52, 369.53, 369.54, 369.55, 369.56, 369.57, 369.58, 369.59, 369.60, 369.61, 369.62, 369.63, 369.64, 369.65, 369.66, 369.67, 369.68, 369.69, 369.70, 369.71, 369.72, 369.73, 369.74, 369.75, 369.76, 369.77, 369.78, 369.79, 369.80, 369.81, 369.82, 369.83, 369.84, 369.85, 369.86, 369.87, 369.88, 369.89, 369.90, 369.91, 369.92, 369.93, 369.94, 369.95, 369.96, 369.97, 369.98, 369.99, 370.00.

Herby certify that this plat was surveyed by me or under my direct supervision and that I am a duly registered Land Surveyor under the Laws of the State of Minnesota and that this plat meets requirements of Minnesota Statutes, sections 369.01, 369.02, 369.03, 369.04, 369.05, 369.06, 369.07, 369.08, 369.09, 369.10, 369.11, 369.12, 369.13, 369.14, 369.15, 369.16, 369.17, 369.18, 369.19, 369.20, 369.21, 369.22, 369.23, 369.24, 369.25, 369.26, 369.27, 369.28, 369.29, 369.30, 369.31, 369.32, 369.33, 369.34, 369.35, 369.36, 369.37, 369.38, 369.39, 369.40, 369.41, 369.42, 369.43, 369.44, 369.45, 369.46, 369.47, 369.48, 369.49, 369.50, 369.51, 369.52, 369.53, 369.54, 369.55, 369.56, 369.57, 369.58, 369.59, 369.60, 369.61, 369.62, 369.63, 369.64, 369.65, 369.66, 369.67, 369.68, 369.69, 369.70, 369.71, 369.72, 369.73, 369.74, 369.75, 369.76, 369.77, 369.78, 369.79, 369.80, 369.81, 369.82, 369.83, 369.84, 369.85, 369.86, 369.87, 369.88, 369.89, 369.90, 369.91, 369.92, 369.93, 369.94, 369.95, 369.96, 369.97, 369.98, 369.99, 370.00.

SURVEY STANDARDS

- The plot values, azimuths, and distances are based on the project control survey system.
- The boundary monuments shown on this plat have been field checked for location. The standard deviation for the monument position is 0.1 ft.
- The state plane coordinates shown on one monument are based on ties to national control monuments.
- Coordinates of location have been filed of the County Recorder's Office and/or the County Auditor's Office for the section corner monuments shown on this plat.
- For details of this survey contact the Surveying and Mapping Section of the Minnesota Department of Transportation, OAKDALE, Name of District

AZMUTH ORIENTATION AND GRID CONVERSION

Plot azimuths are oriented to Minnesota State Plane Coordinate System with 0 degree 0 minutes 0 seconds being 000 NORTH.

Plot distances are ground lengths and can be converted to Minnesota State Plane Grid lengths by multiplying Plot distances by 0.9993557.

CONVENTIONAL SYMBOLS

Section Line	Building Removed Easement	B.R.E.
Quarter Line	R/W Parcel Number	R/W
Sixteenth Line	Access Control	Access Control
Property Line	Access Opening	Access Opening
R/W Boundary	Existing D.O.T. R/W Line	Existing D.O.T. R/W Line
And Other Road R/W's	3/4" D.O.T. Iron Pin	3/4" D.O.T. Iron Pin
Private Easement	Other Iron Monument	Other Iron Monument
Temporary Easement	Concrete or Stone Monument	Concrete or Stone Monument
	R/W Boundary Corner	R/W Boundary Corner

DISTANCES SHOWN TO FEET (66.00 ETC.) ARE EXTRINSIC VALUES.

SCALE 1 inch = 100 feet

DOC. NO. 796239

OFFICE OF REGISTRAR OF TITLES
 RAMSEY COUNTY, MINN.

I HEREBY CERTIFY THAT THIS PLAT HAS BEEN FILED IN THIS OFFICE AT 10:00 A.M. ON 10-21-85 IN BOOK 1 OF CHANGES, PAGE 111

DOC. NO. 2302160

OFFICE OF COUNTY RECORDER
 RAMSEY COUNTY, MINN.

I HEREBY CERTIFY THAT THIS PLAT HAS BEEN FILED IN THIS OFFICE AT 10:00 A.M. ON 10-21-85 IN BOOK 1 OF CHANGES, PAGE 111

PLAT NO. 62-14
 S.P. 6214(49-126)902

PLAT BOUNDARY DATA

POINT	DISTANCE	AZMUTH
B422-81	374.44	164.34.58
81-82	103.72	266.28.54
82-83	493.24	178.29.10
83-84	21.50	134.14.10
84-85*	111.95	89.29.10
85-86	206.47	72.29.10
86-87	367.14	344.34.58
87-88	18.70	82.28.54
88-89	112.70	168.47.42
89-910	4.13.50	R 3769.83
C 277.47 CAZ 166.04.10	10.48	277.53
910-911	14.75	164.34.58
911-912	162.22	253.59.10
912-913	170.71	R 401.87
C 120.83 CAZ 266.27.48	10.48	121.88
913-914	68.12	234.34.58
914-915	250.13	178.29.10
915-916	40.00	266.28.54
916-917	49.50	266.28.54
917-918	822.78	358.59.10
918-919	9.55	86.28.54
919-920	382.45	358.59.10
920-921	40.00	86.28.54
921-922	383.24	344.34.58
922-923	383.24	344.34.58

* ON PROPERTY LINE