

RIGHT OF WAY IN BACCHUS WHITE BEAR HILLS								
PARCEL	OWNER	LOCATION	TERRACE'S CERTIFICATE NO.	NEW T.M. R/W	TEMPORARY EASEMENT SQ. FT. (MORE OR LESS)	BUILDING REMOVAL EASEMENT	EASEMENT EXPIRES ON	PERMANENT R/W INTEREST
79	KEVIN H. WALDON	LCT 19 BLK 11	291715		413		12-1-89	
81	KENNETH W. BACCHUS, INC.	LOT 20 BLK 11	230389		11788		12-1-89	

MINNESOTA DEPARTMENT OF TRANSPORTATION RIGHT OF WAY PLAT NO. 62-10

STATE PROJECT NO. 6232(244-244)901
IN THE SOUTHEAST QUARTER OF THE SOUTHEAST QUARTER OF SECTION 25, T.30 N., R.22 W.
RAMSEY COUNTY, MINNESOTA

THE COMMISSIONER OF TRANSPORTATION IS HEREBY DESIGNATING THE DEFINITE LOCATION OF TRUNK HIGHWAY NO. 244 FROM 0.25 MILE EAST OF MC KNIGHT ROAD TO THE EAST COUNTY LINE

As shown on this plat prepared by the State of Minnesota Department of Transportation as hereby certified on the official plat of these portions of said T.30 N. R.22 W. section 25 and the Commissioner's Order thereon pursuant to Minnesota Statutes, section 326.02, subd. 1, and section 326.05.

Commissioner's Order No.	Location	Nature of Interest
68702	PLATS 62-8 THRU 62-12	Definite location, width, access, temporary easement and building removal easement.

Recommended for Certification: _____ Certified: _____
 Richard D. Pearson
 Commissioner of Transportation
 Date: 3/19/84
 R. D. Pearson
 Director of R/W Operations
 Date: 3/19/84
 R. C. Marshall
 Assistant Commissioner of Transportation

I hereby certify that this plat was prepared by me or under my direct supervision and that I am a duly Registered Land Surveyor under the Law of the State of Minnesota; that this plat meets requirements of Minnesota Statutes, section 326.02, subd. 1, and section 326.05, and that the proposed right-of-way boundary lines are correctly shown on the plat.

Certified by John C. Johnson 10460 3-19-84
 Registered Land Surveyor Reg. No. Date
 Office of Surveying & Mapping

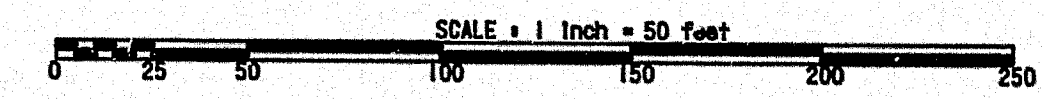
I hereby certify that this plat was surveyed by me or under my direct supervision and that I am a duly Registered Land Surveyor under the Law of the State of Minnesota; that all measurements are correctly shown on this plat and that all monuments have been correctly placed as shown on the plat.

Certified by David D. Pearson 11752 3-5-84
 Registered Land Surveyor Reg. No. Date
 MNDOT District Office

SURVEY STANDARDS

- The plat values, azimuths and distances, are based on the project control survey system.
- The boundary monuments shown on the plat have been field checked for location. The standard deviation for the monument position is 0.1 ft.
- The state plane coordinate shown on one monument are based on ties to national control monuments.
- Certificates of Location have been filed at the County Recorder's Office and/or the County Surveyor's Office for the section corner monuments shown on this plat.
- For details of this survey contact the Surveying and Mapping Section at the Minnesota Department of Transportation, DAKOTA, State Capitol Building, St. Paul, Minnesota.

AZIMUTH ORIENTATION AND GRID CONVERSION
 Plat azimuths are oriented to Minnesota State Plane Coordinate System with 8 degree 8 minutes 8 seconds being GRID NORTH.
 Plat distances are ground lengths and can be converted to Minnesota State Plane Grid lengths by multiplying the distances by 0.999957.

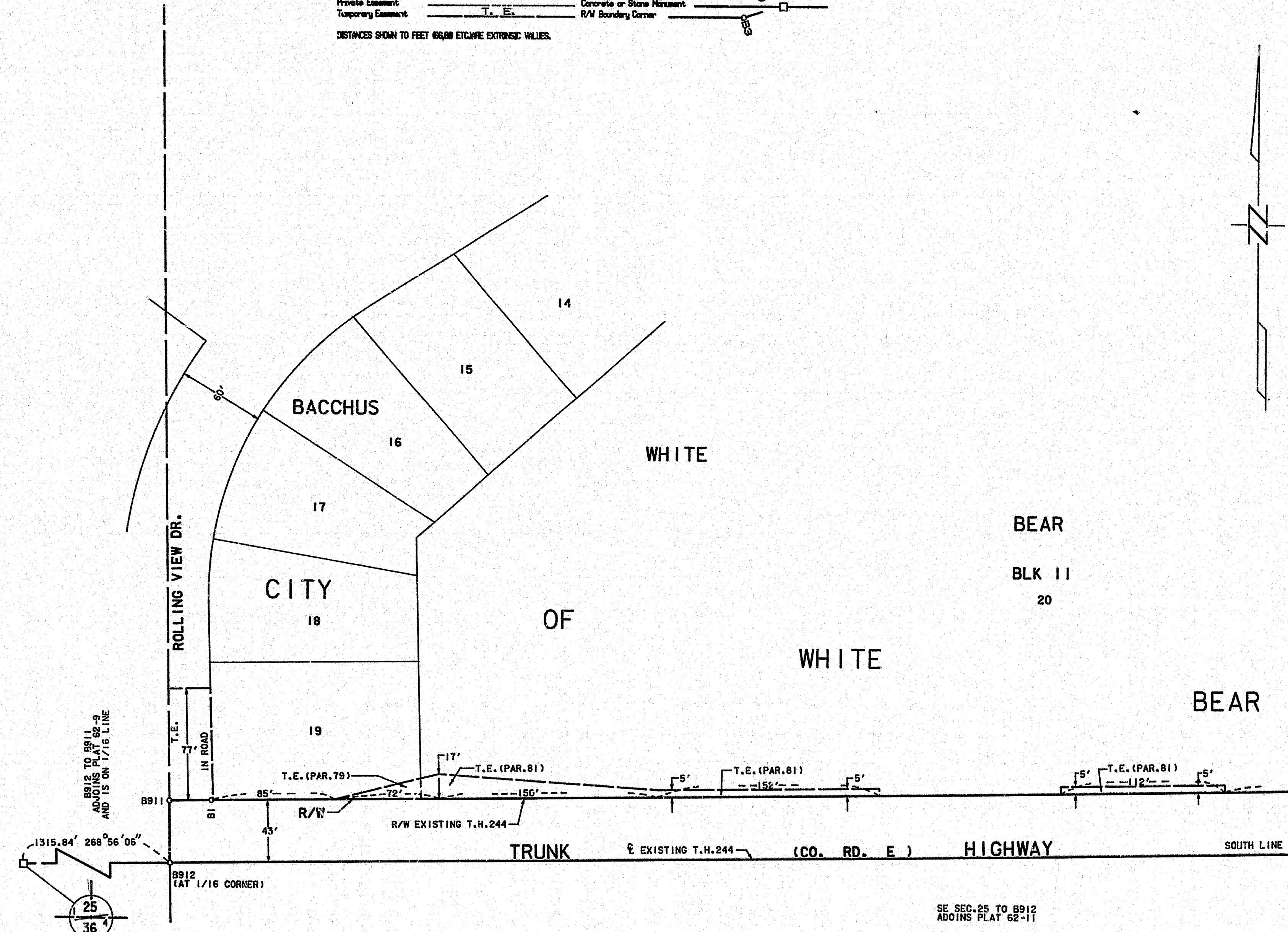


PLAT BOUNDARY DATA		
POINT	DISTANCE	AZIMUTH
B1-B2	1154.13'	88°56'06"
B2-B3	32.00'	359°30'26"
B3-B4	127.92'	44°12'15"
B4-B1005	43.00'	89°30'26"
B1005-SE 25	164.58'	179°30'26"
SE 25-B912	1315.84'	258°56'06"
B912-B911	43.00'	359°20'31"
B911-B1	28.83'	88°56'06"

CONVENTIONAL SYMBOLS

Section Line	Building Removal Easement	B, R, F
Quarter Line	R/W Parcel Number	3
Sixteenth Line	Access Control	o
Property Line	Access Opening	o
R/W Boundary	2" x 2" D.O.T. Iron Pipe with Aluminum Cap	o
Existing D.O.T. R/W Line	3/4" D.O.T. Iron Pin	o
And Other Road R/W's	Other Iron Monument	o
Railroad R/W	Concrete or Stone Monument	o
Private Easement	R/W Boundary Corner	o
Temporary Easement		

DISTANCES SHOWN TO FEET (66.68 FT/METER EXCEPT AS NOTED)



RAMSEY CO. SQUARE GRANITE MON. AT 1/4 CORNER

RAMSEY CO. CAST IRON MON. AT SEC. CORNER MINN. STATE PLANE COORD., SOUTH ZONE
 X = 2,262,444.34
 Y = 749,045.12

DOC. NO. 757203
 OFFICE OF REGISTRAR OF TITLES
 RAMSEY COUNTY, MINN.
 I HEREBY CERTIFY THAT THIS PLAT HAS BEEN FILED IN THIS OFFICE AT 11:00 A.M. ON 3/19/84
 BOOK 10 PAGE 10
 COUNTY REGISTRAR

PLAT NO. 62-10
 S.P. 6232(244-244)901