

THE COMMISSIONER OF TRANSPORTATION IS HEREBY DESIGNATING THE DEFINITE LOCATION OF TRUNK HIGHWAY NO. 244 FROM TRUNK HIGHWAY NO. 61 TO MC KNIGHT ROAD

As shown on this plat prepared by the State of Minnesota Department of Transportation as hereby certified as the official plat of this portion of road 11, 244 within the designated portion of Sections 27 and 34 and the Commissioner's Order therefor, pursuant to Minnesota Statutes, section 83.36, subdivision 2, section 83.37, subdivision 1, and section 83.38.

Commissioner's Order No. 68602 Location PLATS 62-1 THRU 62-6 Nature of Interest Definite location, width, access, temporary easement and building removal easement.

Recommended for Certification: Richard P. Griffin, Commissioner of Transportation, Date 3-19-84, Certified: F.L. Marshall, Assistant Commissioner of Transportation, Date 3-19-84.

I hereby certify that this plat was prepared by me or under my direct supervision and that I am a duly Registered Land Surveyor under the Laws of the State of Minnesota and that this plat meets the requirements of Minnesota Statutes, section 83.36, subdivision 2, section 83.37, subdivision 1, and section 83.38, and that the parcels shown are correctly described and delineated on the plat and that the proposed right-of-way boundary lines are correctly delineated on the plat.

Certified by J. E. Jensen, 10460, 3-19-84, Registered Land Surveyor, Office of Surveying & Mapping, Reg. No. Date.

I hereby certify that this plat was surveyed by me or under my direct supervision and that I am a duly Registered Land Surveyor under the Laws of the State of Minnesota and that all measurements are correctly shown on this plat and that all monuments have been correctly placed as shown on this plat.

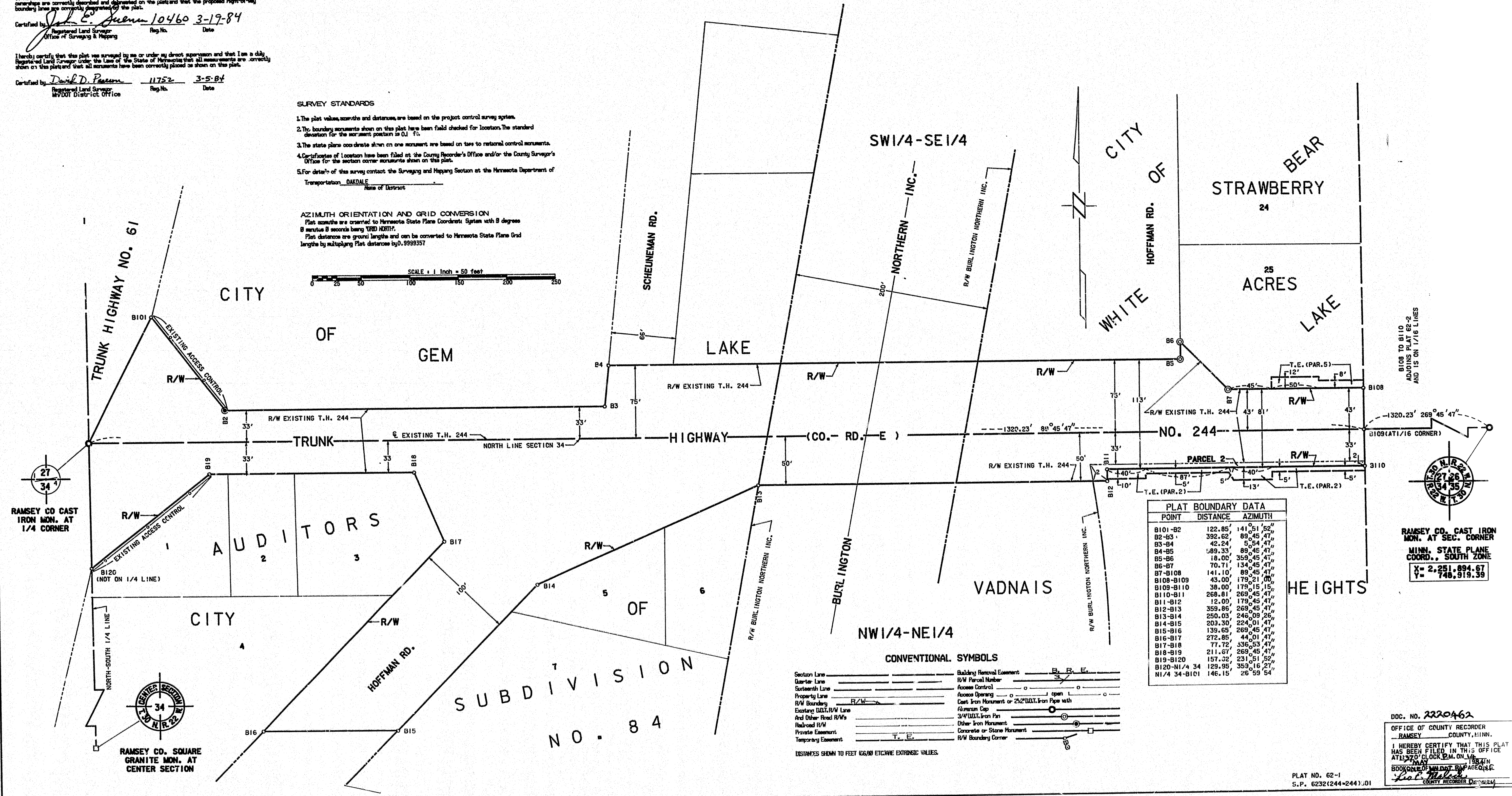
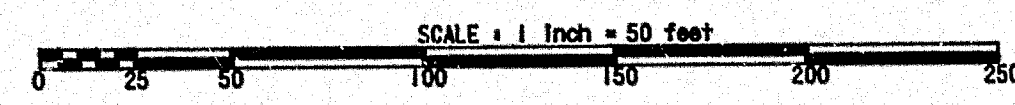
Certified by David D. Patten, 11752, 3-5-84, Registered Land Surveyor, MNDOT District Office, Reg. No. Date.

RIGHT OF WAY IN SECTION 34							
PARCEL	OWNER	LOCATION	TORRENS' CERTIFICATE NO.	NEW T.H. R/W	TEMPORARY EASEMENT	BUILDING REMOVAL EASEMENT	PERMANENT R/W INTEREST
2	LOUIS E. ANDERSON	NW1/4NE1/4		0.03	0.04		12-1-89 FEE
RIGHT OF WAY IN STRAWBERRY ACRES							
5	MICHALNITT, INC.	LOT 25			969		12-1-89

MINNESOTA DEPARTMENT OF TRANSPORTATION
RIGHT OF WAY PLAT NO. 62-1
STATE PROJECT NO. 6232(244-244)901
IN THE SOUTHWEST QUARTER OF THE SOUTHEAST QUARTER OF SECTION 27, T.30 N., R.22 W., AND
IN THE NORTHWEST QUARTER OF THE NORTHEAST QUARTER OF SECTION 34, T.30 N., R.22 W.
RAMSEY COUNTY, MINNESOTA

- SURVEY STANDARDS**
- The plat values, acreage and distances are based on the project control survey system.
 - The boundary measurements shown on this plat have been field checked for location. The standard deviation for the measurements is 0.1 FT.
 - The state plane coordinates shown on one monument are based on ties to national control monuments.
 - Certification of location have been filed at the County Recorder's Office and/or the County Surveyor's Office for the section owner accurate shown on this plat.
 - For details of this survey contact the Surveying and Mapping Section at the Minnesota Department of Transportation, DAKOTA Ave. of District.

AZIMUTH ORIENTATION AND GRID CONVERSION
Plat azimuths are oriented to Minnesota State Plane Coordinate System with 8 degrees 8 minutes 8 seconds being USED NORTH.
Plat distances are ground lengths and can be converted to Minnesota State Plane Grid lengths by multiplying Plat distances by 0.9999357



POINT	DISTANCE	AZIMUTH
B101-B2	122.85	141°51'52"
B2-B3	392.62	89°45'47"
B3-B4	42.24	5°54'47"
B4-B5	389.33	89°45'47"
B5-B6	18.00	359°45'47"
B6-B7	70.71	134°45'47"
B7-B108	141.10	89°45'47"
B108-B109	43.00	179°21'00"
B109-B110	38.00	179°15'15"
B110-B111	268.81	269°45'47"
B11-B12	12.00	179°45'47"
B12-B13	359.85	269°45'47"
B13-B14	250.03	246°09'26"
B14-B15	203.30	224°01'47"
B15-B16	139.65	269°45'47"
B16-B17	272.85	44°01'47"
B17-B18	77.72	336°53'47"
B18-B19	211.67	269°45'47"
B19-B120	157.26	231°51'52"
B120-N1/4 34	129.85	359°16'21"
N1/4 34-B101	146.15	26°59'54"

CONVENTIONAL SYMBOLS

Section Line	Building Removal Easement	B ₁ B ₂ E ₁ E ₂
Quarter Line	R/W Parcel Number	
Sectional Line	Access Control	
Property Line	Access Opening	○ open L
R/W Boundary	Cast Iron Monument or 2x2" D.I.T. Iron Pipe with	
Existing D.I.T./R/W Line	Aluminum Cap	
And Other Road R/W's	3/4" D.I.T. Iron Pin	
Private Easement	Other Iron Monument	
Temporary Easement	Concrete or Stone Monument	
	R/W Boundary Corner	

DISMISSES SHOWN TO FEET (66.66 ETC) ARE EXTENDED VALUES.

RAMSEY CO. CAST IRON MON. AT SEC. CORNER
MINN. STATE PLANE COORD. S. 24 SOUTH ZONE
X = 2,251,894.67
Y = 746,519.39

DOC. NO. 2220462
OFFICE OF COUNTY RECORDER
RAMSEY COUNTY, MINN.
I HEREBY CERTIFY THAT THIS PLAT HAS BEEN FILED IN THIS OFFICE AT 1:57 P.M. ON APRIL 11, 1984.
J. E. Jensen
COUNTY RECORDER