

DOOR SCHEDULE

DOOR NO.	SIZE	TYPE	MAT.	GLASS	GRILL	JAMB	JAMB DETAIL	HEAD DETAIL	HARDWARE	REMARKS
201	3'-0" X 6'-8" X 1/2"	A	WOOD			WOOD	13A3		SEE SPECS.	
202	3'-0" X 6'-8" X 1/2"	B	WOOD	1/2" PLATE		WOOD				
203	3'-0" X 6'-8" X 1/2"	A	WOOD			WOOD				
204	2'-6" X 6'-8" X 1/2"	A	WOOD			WOOD				
205	3'-0" X 6'-8" X 1/2"	A	H.M.			H.M.	13A3			ELECTRIC LOCK
207	3'-0" X 6'-8" X 1/2"	A	WOOD			WOOD				
209	3'-0" X 6'-8" X 1/2"	A	WOOD			WOOD				
210	3'-0" X 6'-8" X 1/2"	A	WOOD			WOOD				
211	2'-6" X 6'-8" X 1/2"	A	WOOD			WOOD				
212	2'-6" X 6'-8" X 1/2"	A	WOOD			WOOD				
101	3'-0" X 6'-8" X 1/2"	B	H.M.			H.M.	13A3			ELECTRIC LOCK "B" LABEL
102	3'-6" X 3'-0"	A	H.M.			H.M.	13A3			DETAIL 13A3
103	4'-6" X 3'-0"	A	H.M.			H.M.	13A3			DETAILS 13A3, 13A4, 13A5
104	3'-0" X 3'-0"	A	H.M.			H.M.	13A3			
105	3'-0" X 3'-0"	A	H.M.			H.M.	13A3			
106	3'-0" X 3'-0"	A	H.M.			H.M.	13A3			
107	3'-0" X 2'-6"	A	H.M.			WOOD	13A3			DETAILS 13A3, 13A4, 13A5
108	3'-0" X 6'-8" X 1/2"	A	H.M.			H.M.	13A3			THRESHOLD
109	3'-0" X 6'-8" X 1/2"	A	H.M.			H.M.	13A3			"B" LABEL ELECTRIC LOCK
110	3'-0" X 6'-8" X 1/2"	A	H.M.			H.M.	13A3			
111	2'-6" X 6'-8" X 1/2"	A	H.M.			WOOD EXIST.	13A3			SEE NOTE "B" (SOUTH SIDE ELEV.)

ROOM FINISH SCHEDULE

ROOM	ROOM NAME	FLR.	BASE	WSCT.	WALL	CLG.	NOTE	REMARKS
200	CORRIDOR	A.T.	R.T.		PL.	PL.		MARBLE THRESHOLD AT DOOR 200
201	LIEUTENANTS OFFICE	A.T.	R.T.		PL.	PL.		
202	ASSEMBLY	A.T.	R.T.		PL.	PL.		
203	STORAGE & COATS	CONC.	R.T.		PL.	PL.		
204	TOILET	V.C.	R.T.		PL.	PL.		VINYL CORLON FLOOR
205	RADIO ROOM	A.T.	R.T.		PL.	PL.		
206	OFFICE	A.T.	R.T.		PL.	PL.		
207	PUBLIC	A.T.	R.T.		PL.	PL.		
208	CAPTAINS OFFICE	A.T.	R.T.		PL.	PL.		
209	VISITOR	A.T.	R.T.		PL.	PL.		
210	LINE UP	A.T.	R.T.		PL.	PL.		
211	MENS TOILET	V.C.	R.T.		PL.	PL.		MARBLE THRESHOLD AT DOOR 211 VINYL CORLON FLOOR
212	WOMENS TOILET	V.C.	R.T.		PL.	PL.		VINYL CORLON FLOOR
213	CORRIDOR & STAIRS	EXIST.	R.T.		PL.	PL.		R.T. CORRIDOR ONLY DETAIL 13A3
101	STAIRS LANDING	A.T.	R.T.		PL.	PL.		DETAIL 13A3
100	LOBBY	A.T.	R.T.		PL.	PL.		METAL LATH & PLASTER
101	STAIRS	EXIST.			PL.	PL.		DETAIL 13A3
102	MECH. EQUIP. ROOM	EXIST.			C.BLK.			

NOTE #1 - EXISTING ROOFING TO BE REMOVED & 1 1/2" CONCRETE FLOOR TO BE POURED OVER EXIST. SLAB. DETAIL 13A3

NOTE #2 - REMOVE EXISTING STEEL WINDOWS IN ROOMS 201, 211, 214, 215, & 216. CLOSE OPENING & PATCH TO MATCH EXISTING.

NOTE #3 - REMOVE WINDOWS IN ROOMS 100, 215 & 216 & INSTALL NEW WINDOWS AS SHOWN. PATCH TO MATCH EXISTING AS REQUIRED.

NOTE #4 - REMOVE EXISTING DOOR & FRAME AND INSTALL DOOR 100 AS SHOWN.

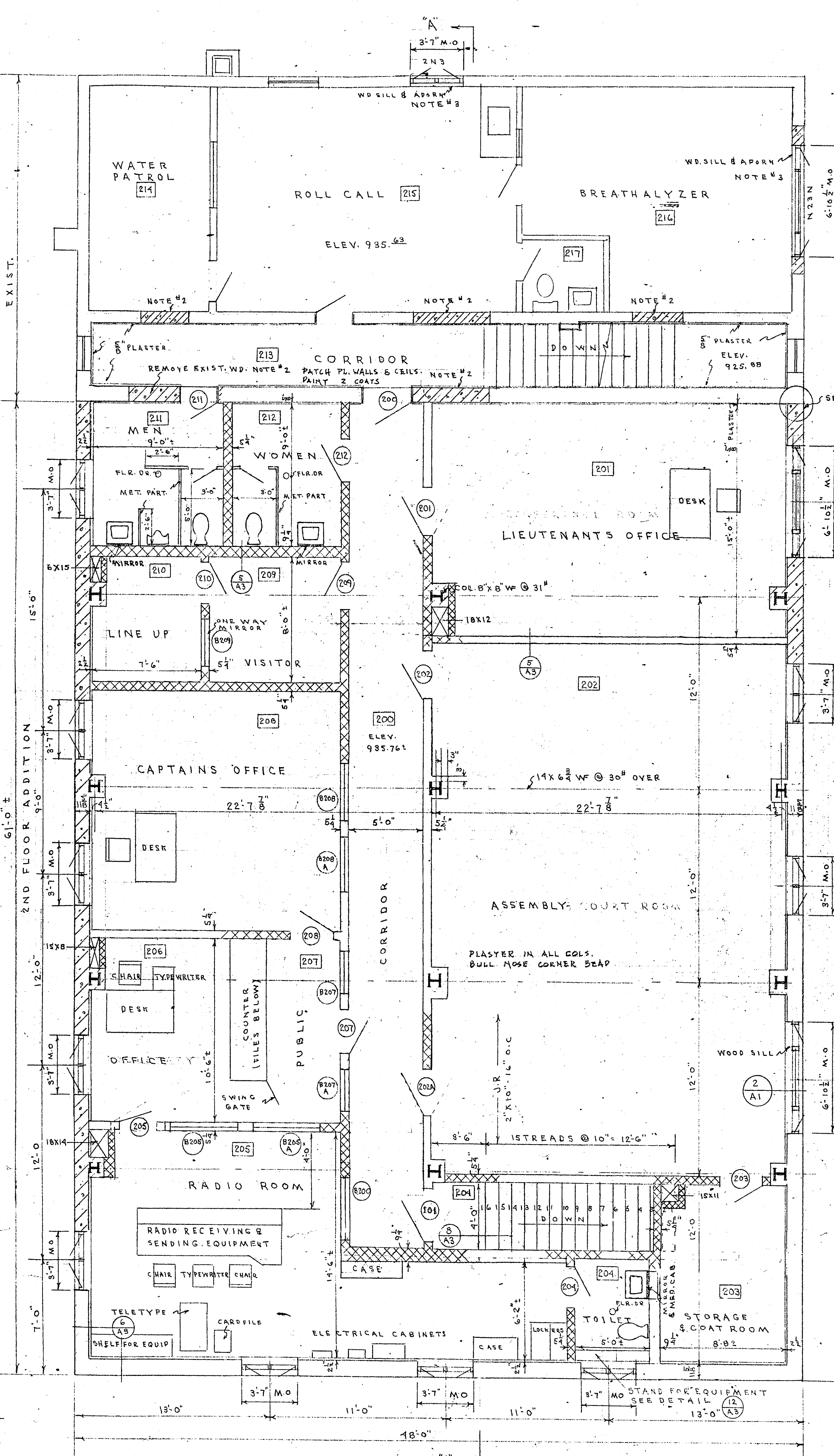
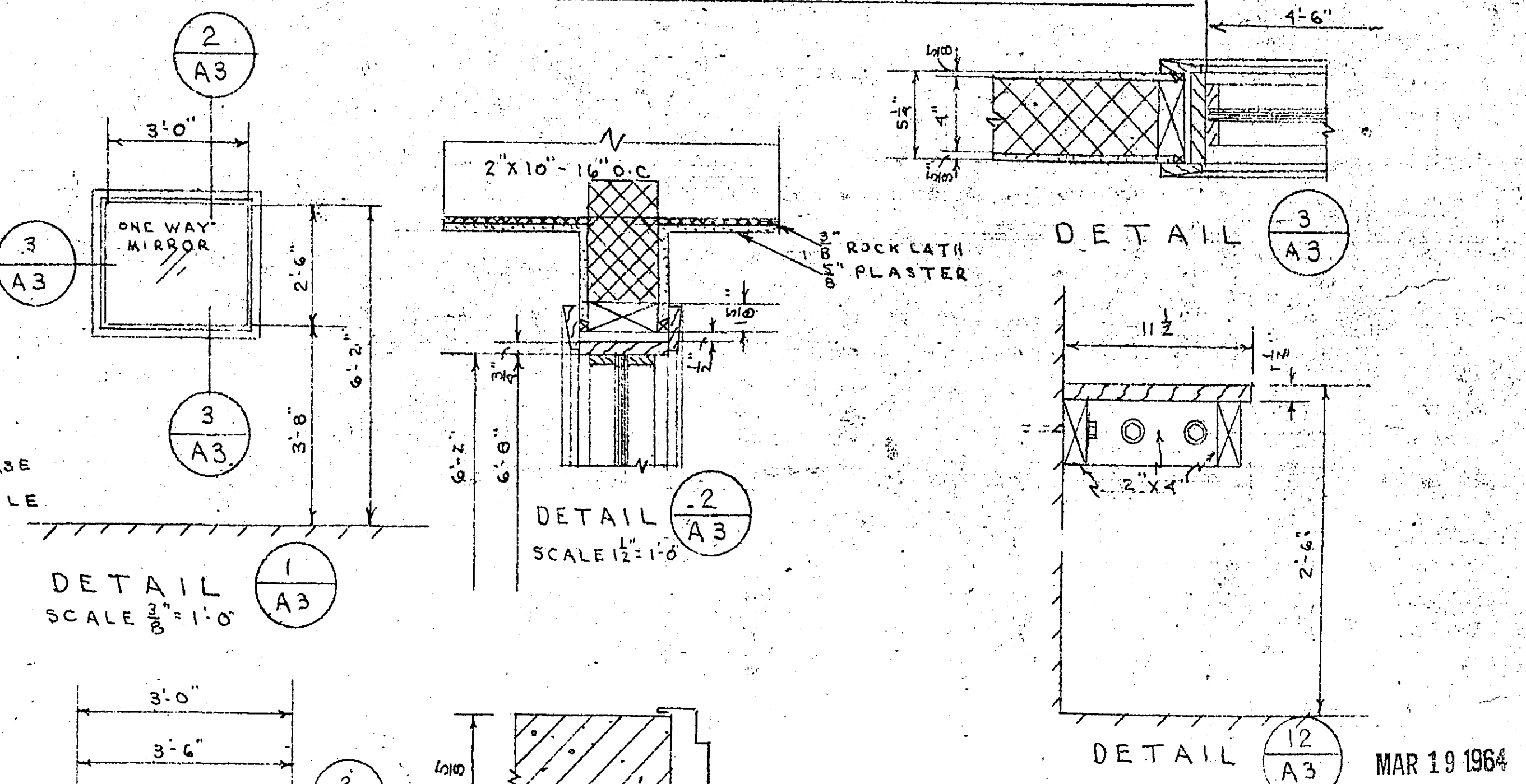
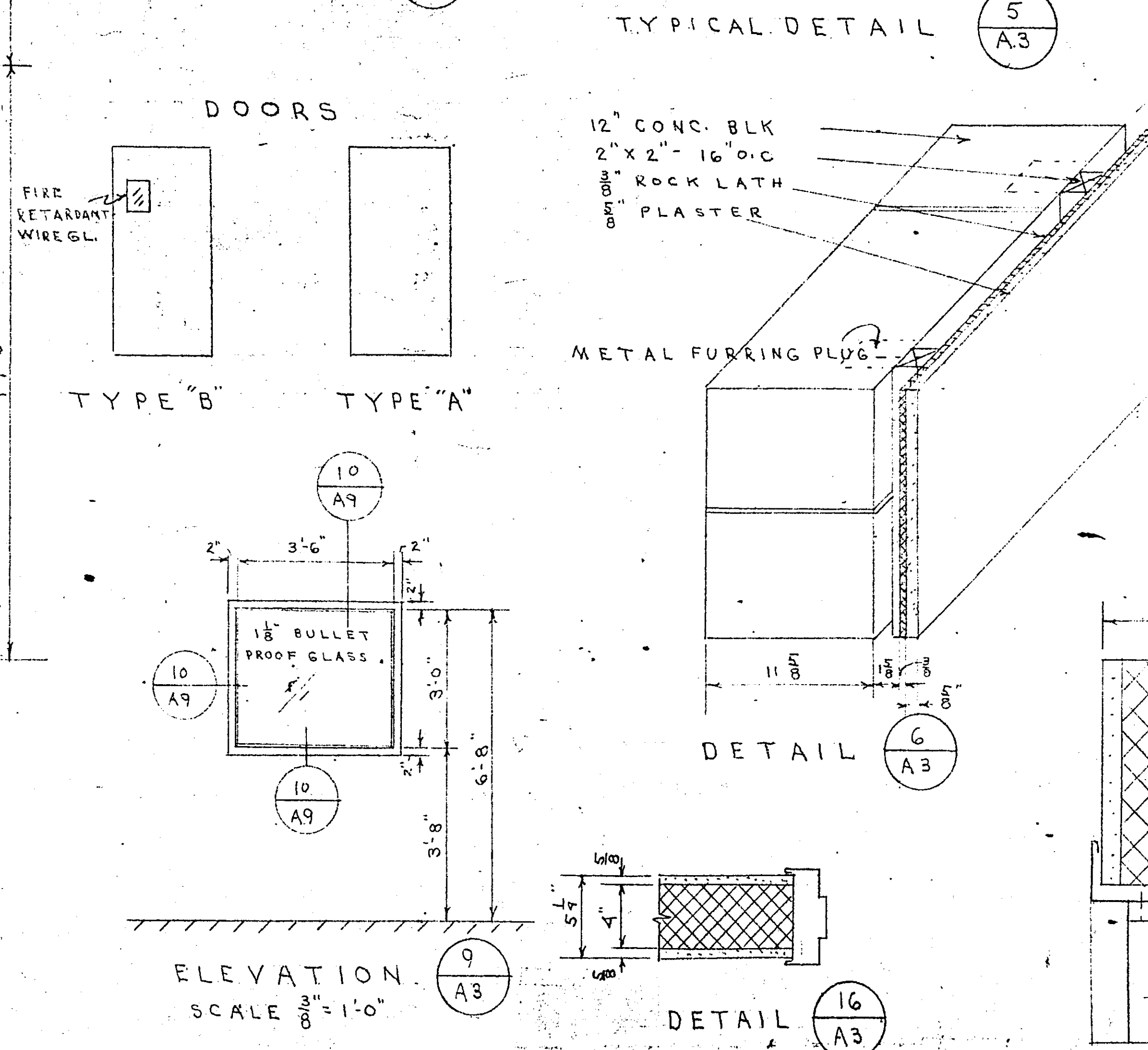
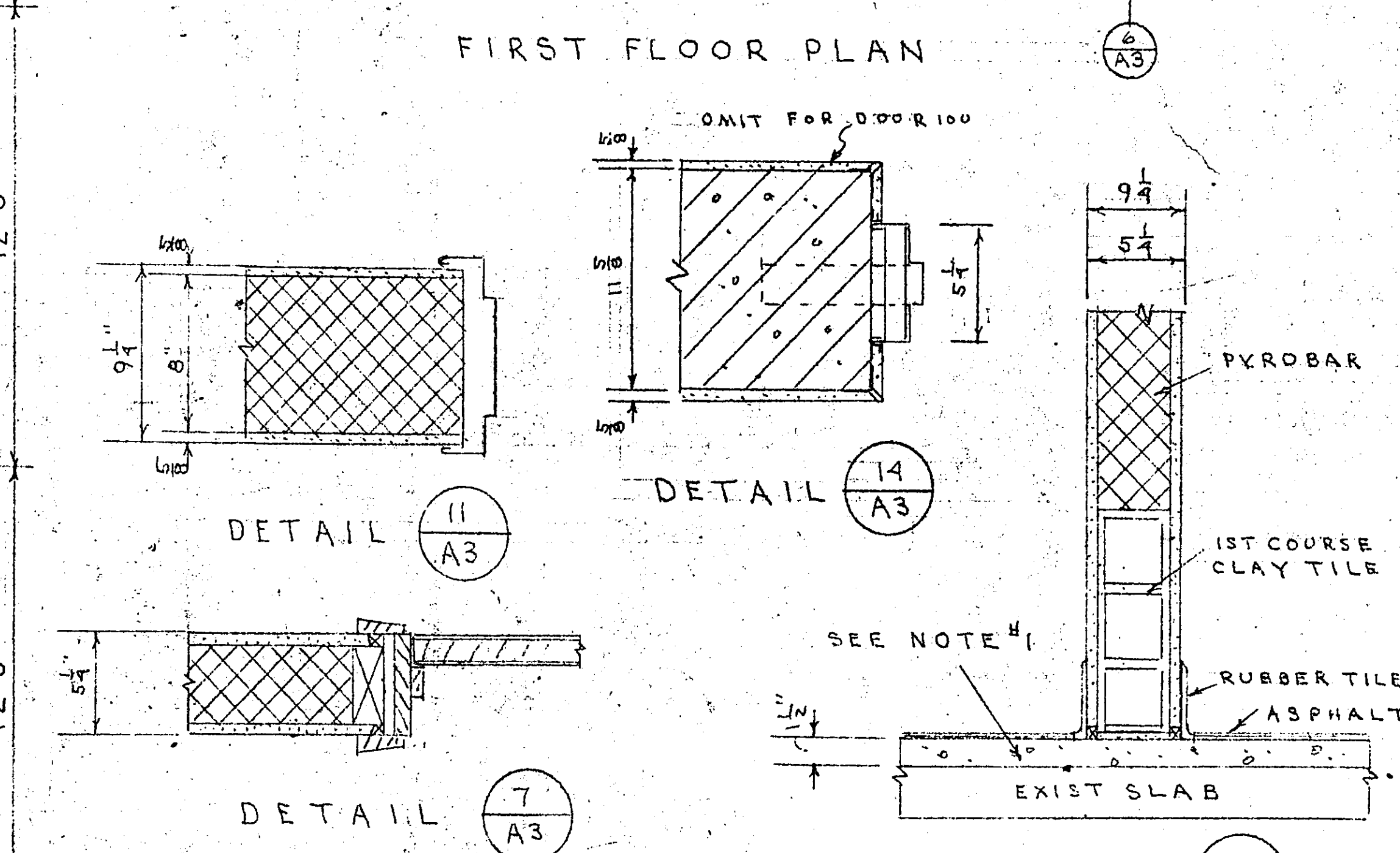
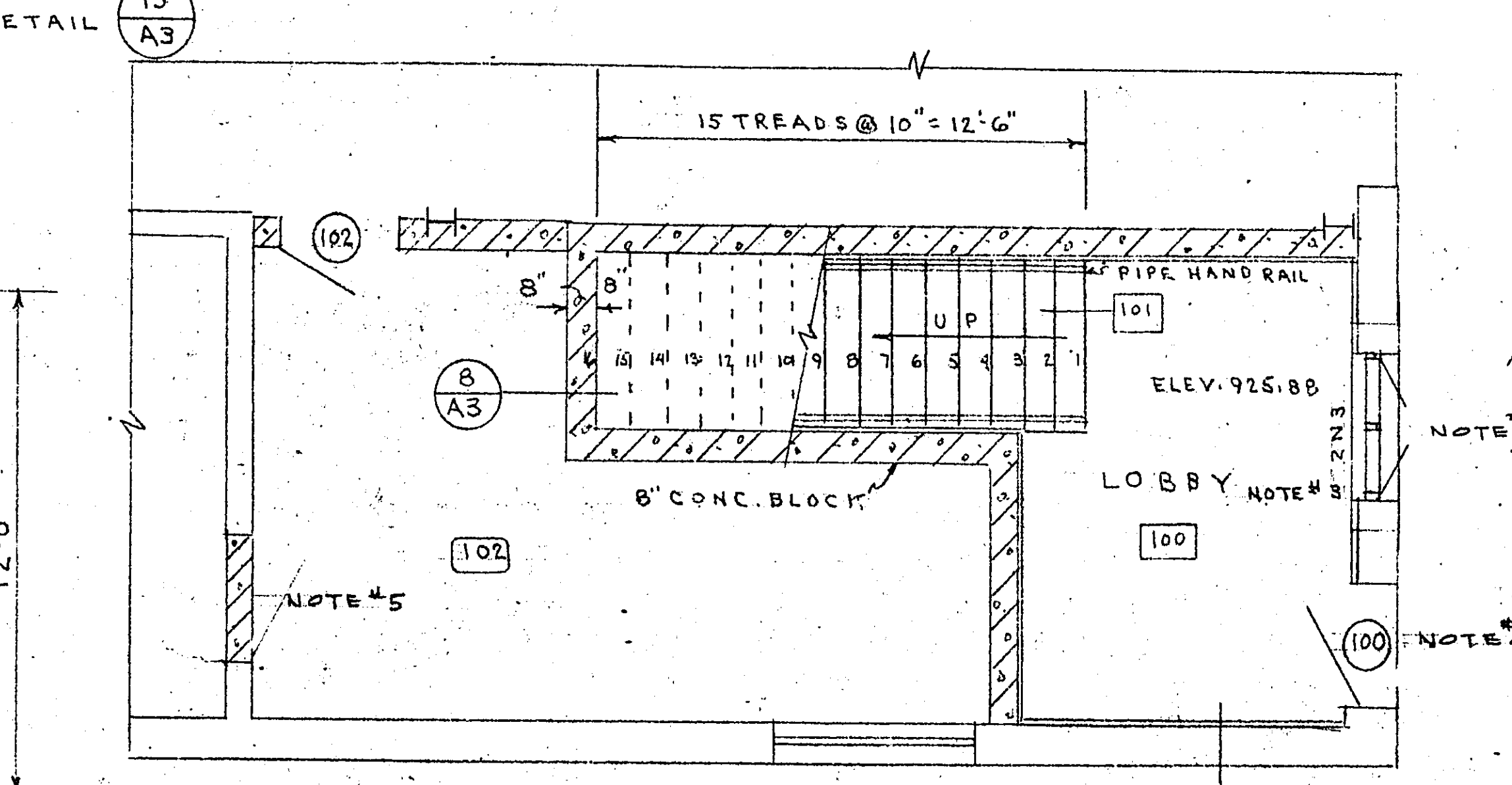
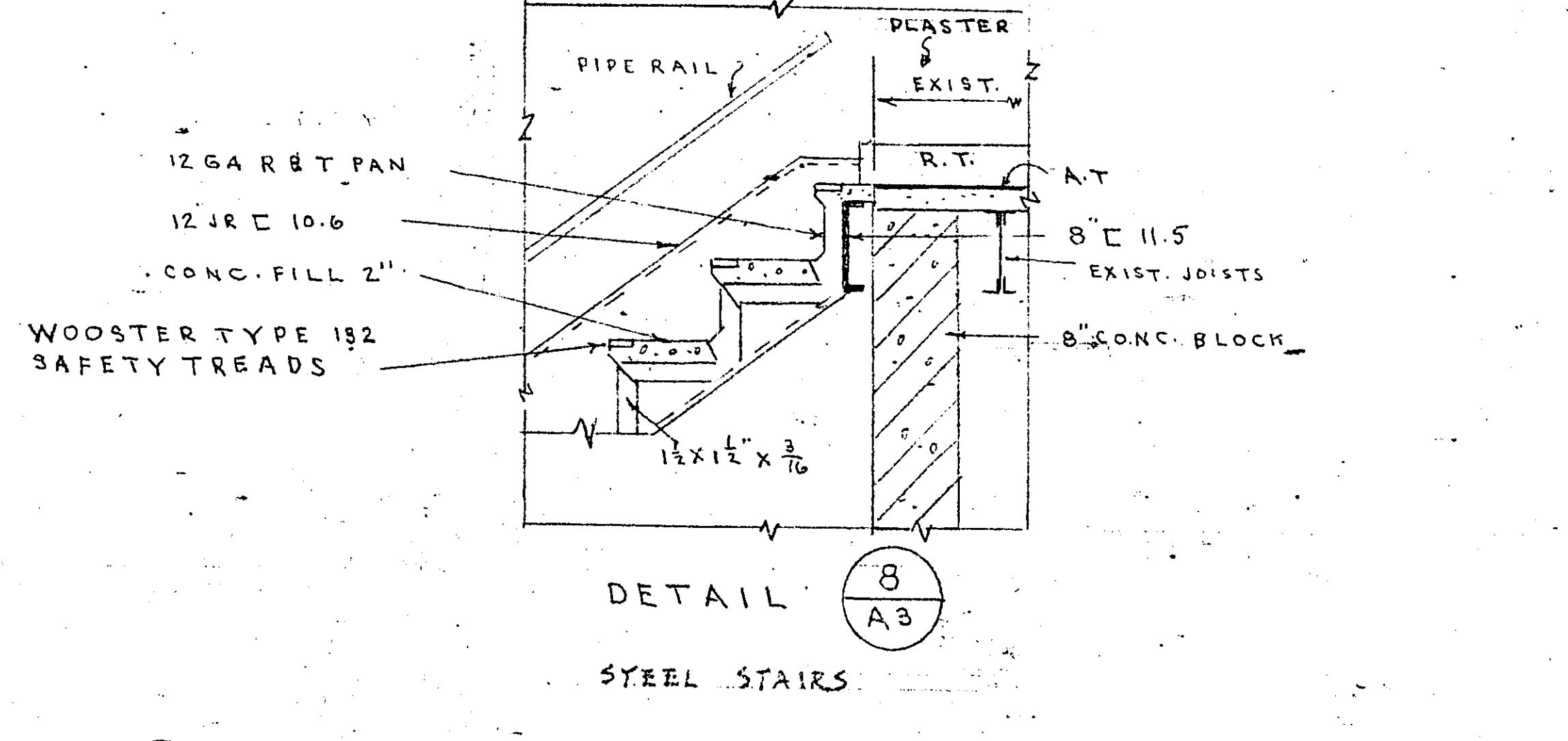
NOTE #5 - REMOVE EXISTING DOOR AND CLOSE OPENING AS SHOWN.

NOTE #6 - REMOVE TWO COURSES OF EXISTING BRICK AND GRAVEL STOP.

NOTE #7 - EXAMINE JOB SITE AND VERIFY ALL CONDITIONS AS SHOWN AND NOTIFY IF ANY DISCREPANCY OR OMISSIONS.

NOTE #8 - REMOVE EXIST. & REPLACE WITH DOOR 214. (NEW HARDWARE)

NOTE #9 - ALL MECHANICAL DUCTS AT CEILING HEIGHT TO BE ENCLOSED WITH CHANNELS, METAL LATH & PLASTER.



SECOND FLOOR PLAN
SCALE 1/4" = 1'-0"

DATE	REVISIONS	BY

FLOOR PLANS & DETAILS
SECOND FLOOR ADDITION
SHERIFFS PATROL STATION
3401 NO. RICE ST.
RAMSEY COUNTY, MINN.

RAY R. GAUGER & CO. ARCHITECTS & ENGINEERS
 FIRST FEDERAL BLDG., ST. PAUL, MINN.

DRAWN BY: E.W. PANORIN
 CHECKED BY: R.E.G.
 DATE: MAR 9, 1963
 JOB NO.: 207
 DRAWING NO.: A3

RAY R. GAUGER

