

MAP OF
JUDICIAL DITCH NO 1
 35 ANOKA COUNTY
 MINN.
18TH JUDICIAL DISTRICT

A.W. GIDDINGS
 Judge

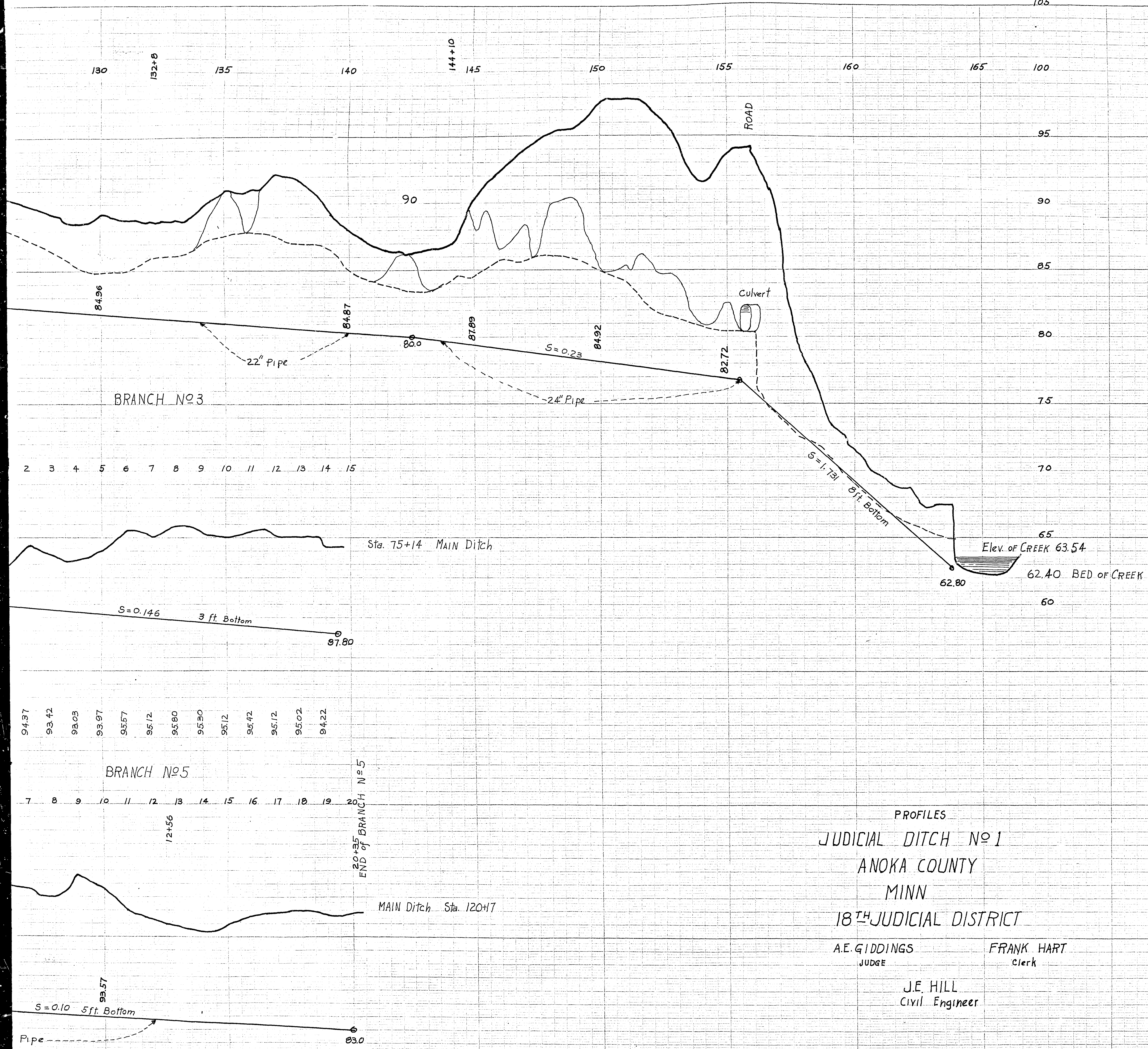
FRANK HART
 Clerk

J.E. HILL
 Civil Engineer

Scale 1 inch = 500 ft

OAK PARK ADDITION	
Block 9	LOTS 1-14 INC. C.J. BERGH
Block 10	LOTS 15-28 INC. C.J. BERGH
Block 11	LOTS 29-42 INC. ANSEL PETERSON
Block 12	LOTS 43-56 INC. C.J. BERGH
Block 13	LOTS 57-70 INC. C.J. BERGH
Block 14	LOTS 71-84 INC. CHAS. MANNING
Block 15	LOTS 85-98 INC. HENRY ST. JOHNSON
Block 16	LOTS 99-112 INC. C.J. BERGH
Block 17	LOTS 113-126 INC. ANSEL PETERSON
Block 18	LOTS 127-140 INC. C.J. BERGH
Block 19	LOTS 141-154 INC. ANSEL PETERSON
Block 20	LOTS 155-168 INC. C.J. BERGH
Block 21	LOTS 169-182 INC. ANSEL PETERSON
Block 22	LOTS 183-196 INC. C.J. BERGH
Block 23	LOTS 197-210 INC. ANSEL PETERSON
Block 24	LOTS 211-224 INC. C.J. BERGH
Block 25	LOTS 225-238 INC. ANSEL PETERSON
Block 26	LOTS 239-252 INC. C.J. BERGH
Block 27	LOTS 253-266 INC. ANSEL PETERSON
Block 28	LOTS 267-280 INC. C.J. BERGH
Block 29	LOTS 281-294 INC. ANSEL PETERSON
Block 30	LOTS 295-308 INC. C.J. BERGH
Block 31	LOTS 309-322 INC. ANSEL PETERSON
Block 32	LOTS 323-336 INC. C.J. BERGH
Block 33	LOTS 337-350 INC. ANSEL PETERSON
Block 34	LOTS 351-364 INC. C.J. BERGH
Block 35	LOTS 365-378 INC. ANSEL PETERSON
Block 36	LOTS 379-392 INC. C.J. BERGH
Block 37	LOTS 393-406 INC. ANSEL PETERSON
Block 38	LOTS 407-420 INC. C.J. BERGH
Block 39	LOTS 421-434 INC. ANSEL PETERSON
Block 40	LOTS 435-448 INC. C.J. BERGH
Block 41	LOTS 449-462 INC. ANSEL PETERSON
Block 42	LOTS 463-476 INC. C.J. BERGH
Block 43	LOTS 477-490 INC. ANSEL PETERSON
Block 44	LOTS 491-504 INC. C.J. BERGH
Block 45	LOTS 505-518 INC. ANSEL PETERSON
Block 46	LOTS 519-532 INC. C.J. BERGH
Block 47	LOTS 533-546 INC. ANSEL PETERSON
Block 48	LOTS 547-560 INC. C.J. BERGH
Block 49	LOTS 561-574 INC. ANSEL PETERSON
Block 50	LOTS 575-588 INC. C.J. BERGH
Block 51	LOTS 589-602 INC. ANSEL PETERSON
Block 52	LOTS 603-616 INC. C.J. BERGH
Block 53	LOTS 617-630 INC. ANSEL PETERSON
Block 54	LOTS 631-644 INC. C.J. BERGH
Block 55	LOTS 645-658 INC. ANSEL PETERSON
Block 56	LOTS 659-672 INC. C.J. BERGH
Block 57	LOTS 673-686 INC. ANSEL PETERSON
Block 58	LOTS 687-700 INC. C.J. BERGH
Block 59	LOTS 701-714 INC. ANSEL PETERSON
Block 60	LOTS 715-728 INC. C.J. BERGH
Block 61	LOTS 729-742 INC. ANSEL PETERSON
Block 62	LOTS 743-756 INC. C.J. BERGH
Block 63	LOTS 757-770 INC. ANSEL PETERSON
Block 64	LOTS 771-784 INC. C.J. BERGH
Block 65	LOTS 785-798 INC. ANSEL PETERSON
Block 66	LOTS 799-812 INC. C.J. BERGH
Block 67	LOTS 813-826 INC. ANSEL PETERSON
Block 68	LOTS 827-840 INC. C.J. BERGH
Block 69	LOTS 841-854 INC. ANSEL PETERSON
Block 70	LOTS 855-868 INC. C.J. BERGH
Block 71	LOTS 869-882 INC. ANSEL PETERSON
Block 72	LOTS 883-896 INC. C.J. BERGH
Block 73	LOTS 897-910 INC. ANSEL PETERSON
Block 74	LOTS 911-924 INC. C.J. BERGH
Block 75	LOTS 925-938 INC. ANSEL PETERSON
Block 76	LOTS 939-952 INC. C.J. BERGH
Block 77	LOTS 953-966 INC. ANSEL PETERSON
Block 78	LOTS 967-980 INC. C.J. BERGH
Block 79	LOTS 981-994 INC. ANSEL PETERSON
Block 80	LOTS 995-1008 INC. C.J. BERGH

R-820



PROFILES
 JUDICIAL DITCH No. 1
 ANOKA COUNTY
 MINN
 18TH JUDICIAL DISTRICT

A.E. GIDDINGS JUDGE FRANK HART Clerk

J.E. HILL
 Civil Engineer

Copied from County Auditors
 File No. 1114 in FEB. 1963

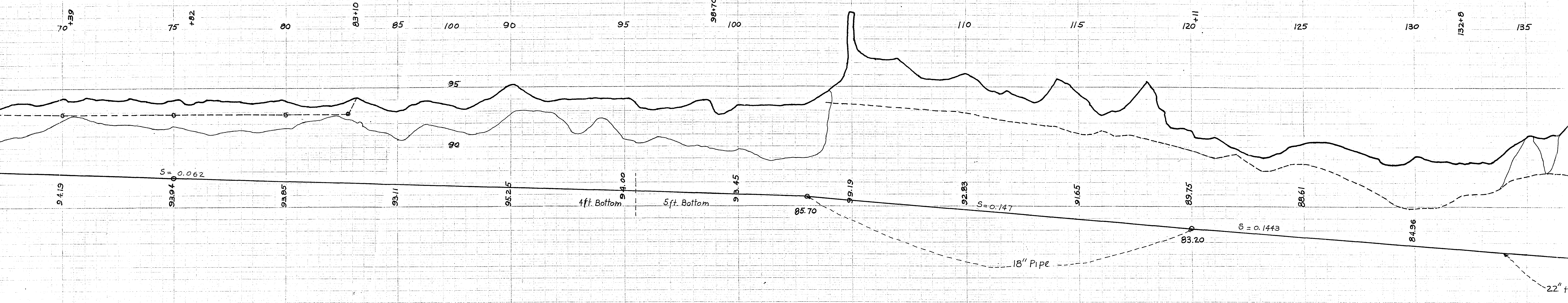
THOMAS H. HARRIS
 J. A. HARRIS
 J. HARRIS & SONS, INC.

Profile Drawn and Inked by J. E. Hill

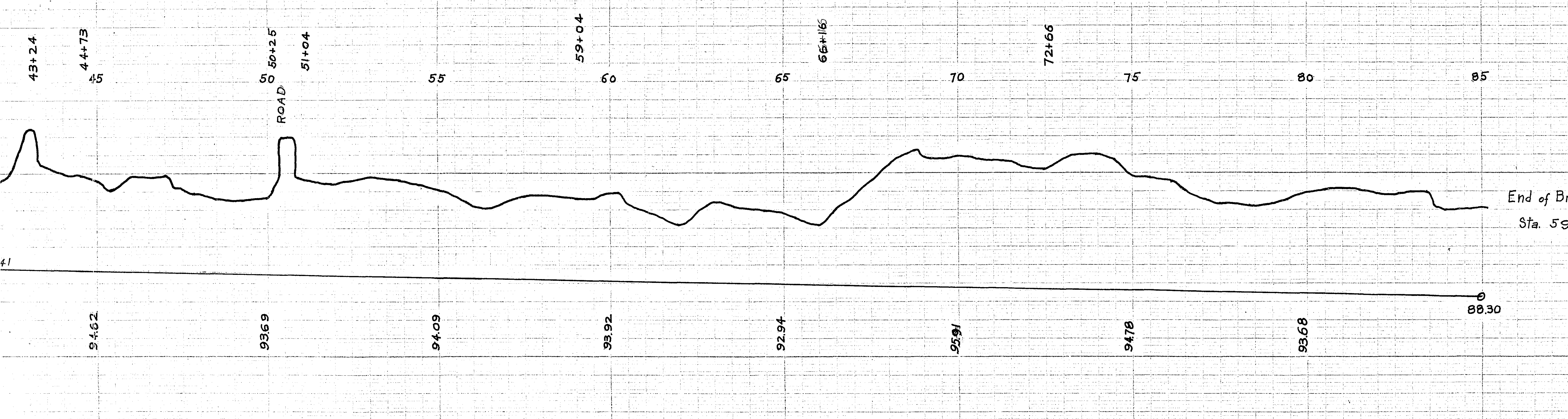
20 X FEB 1963

R-8-20

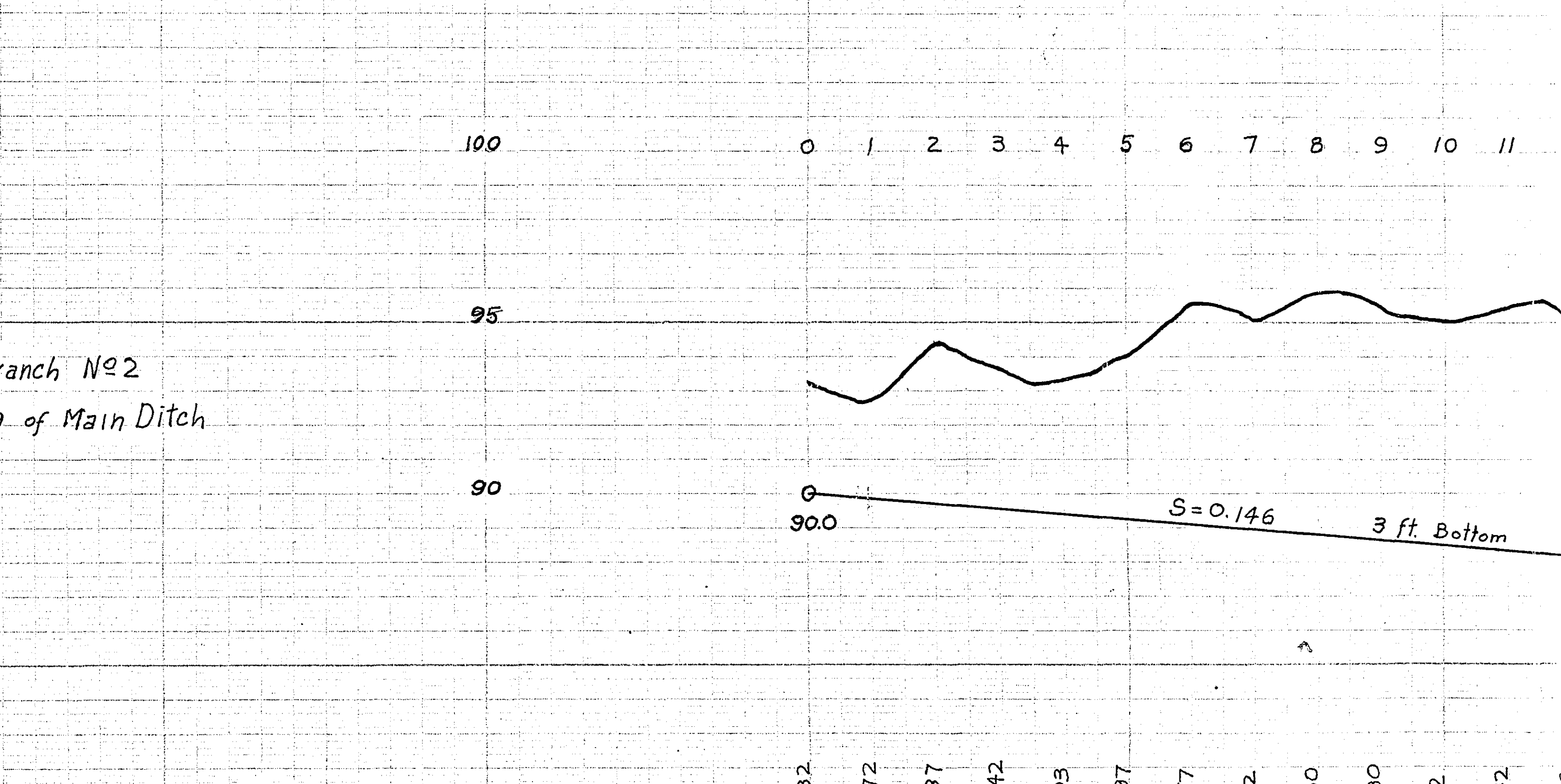
MAIN DITCH



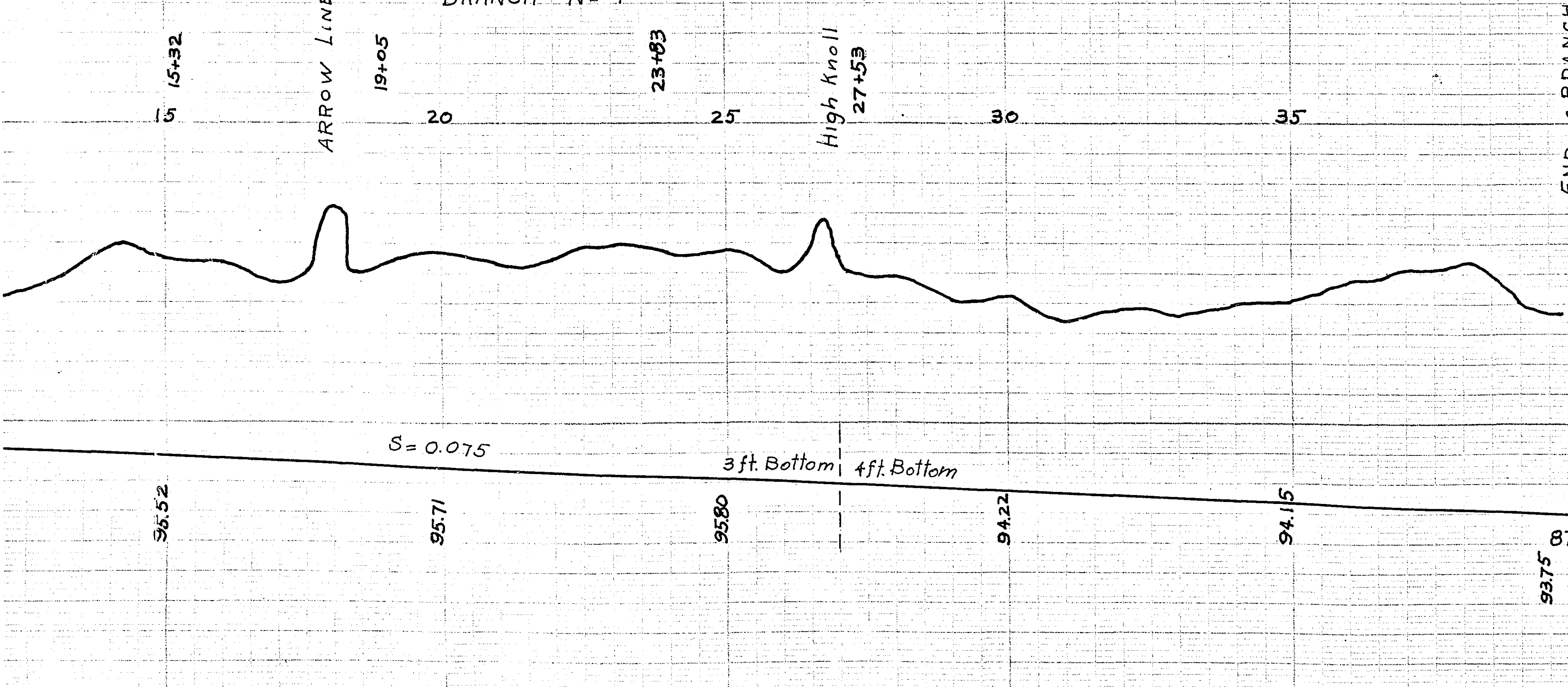
BRANCH No 2



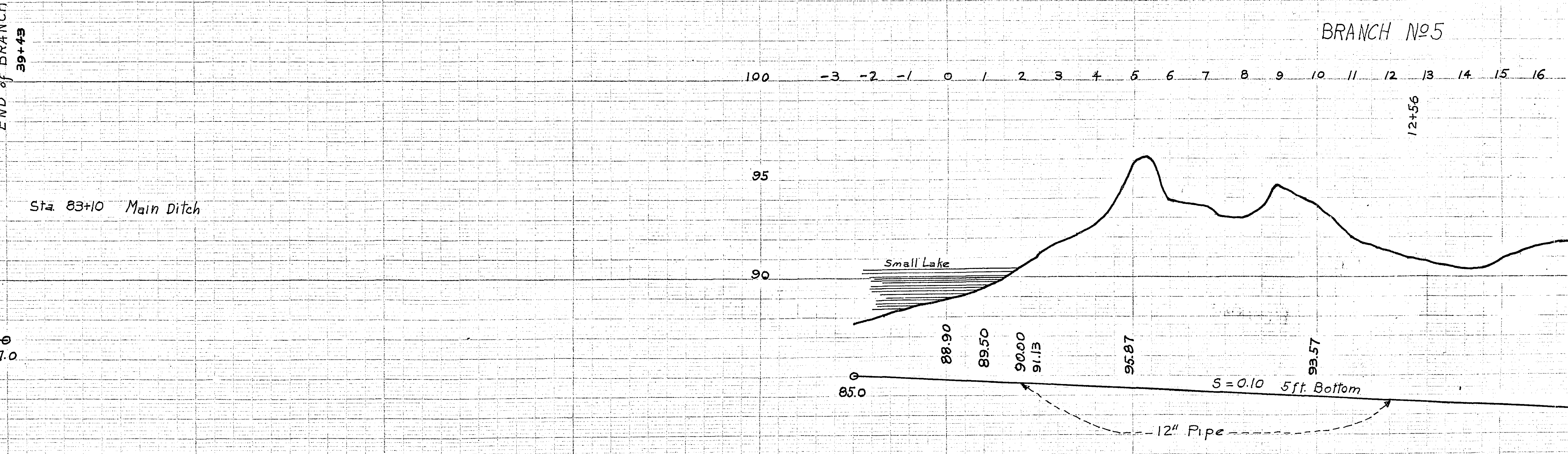
BRANCH No 3



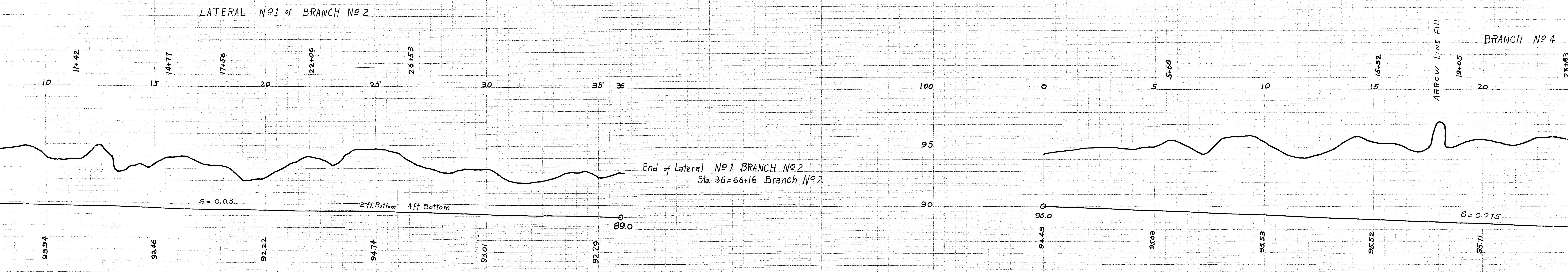
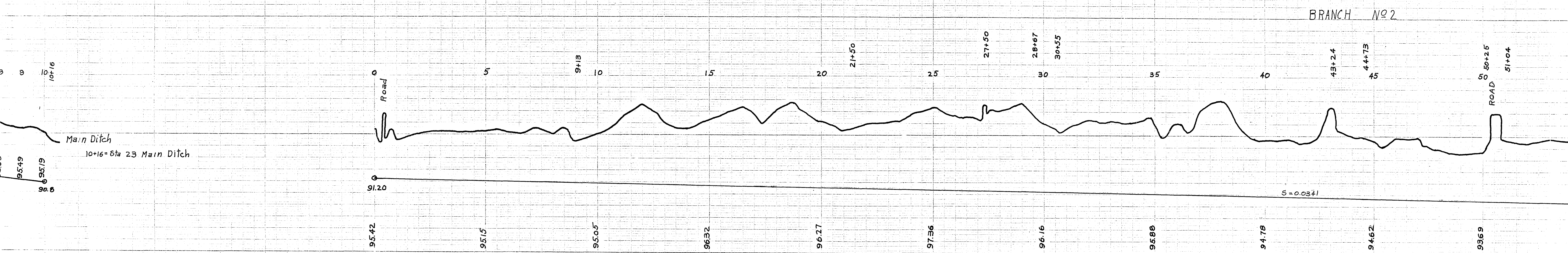
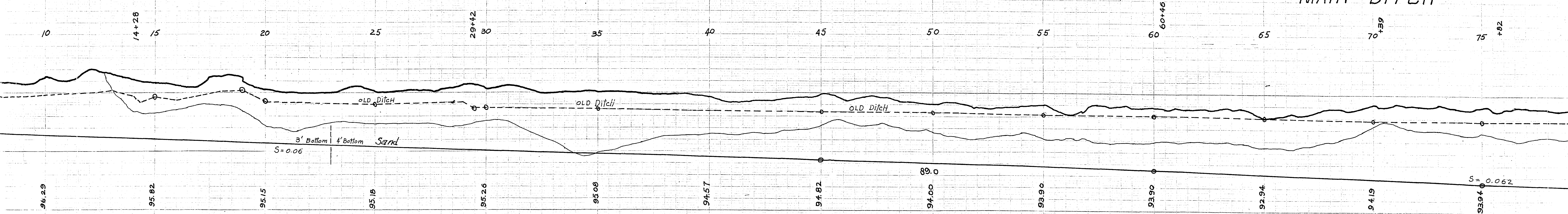
BRANCH No 4



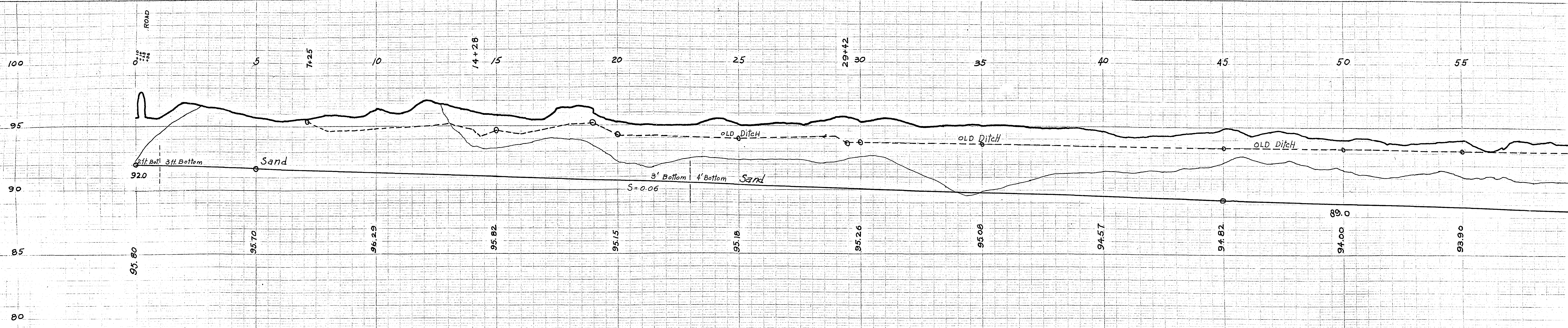
BRANCH No 5



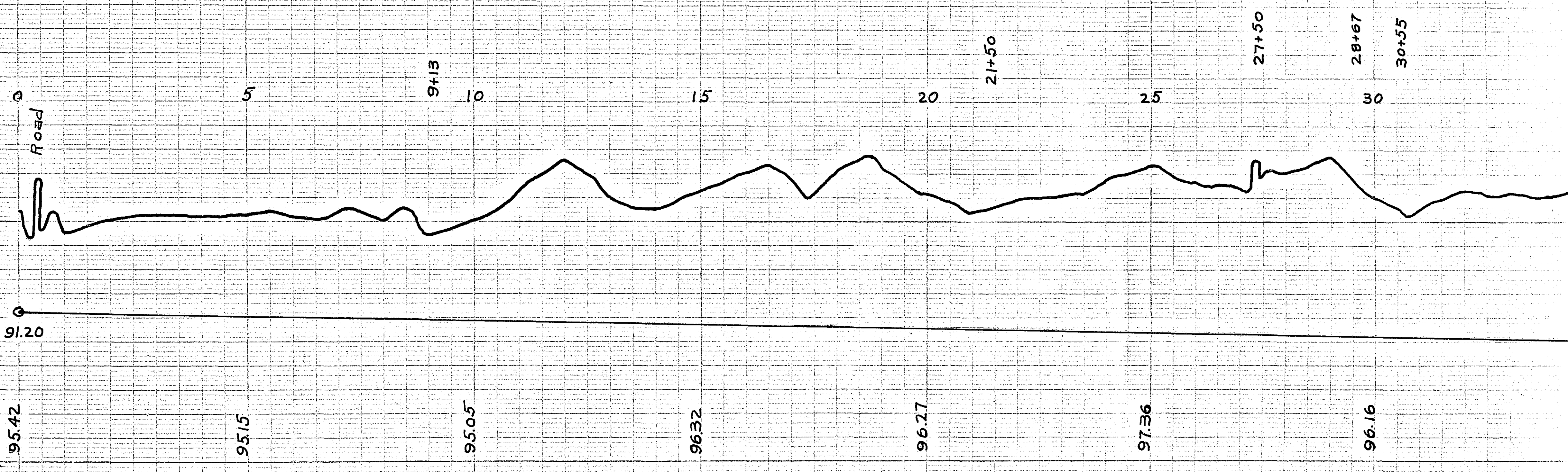
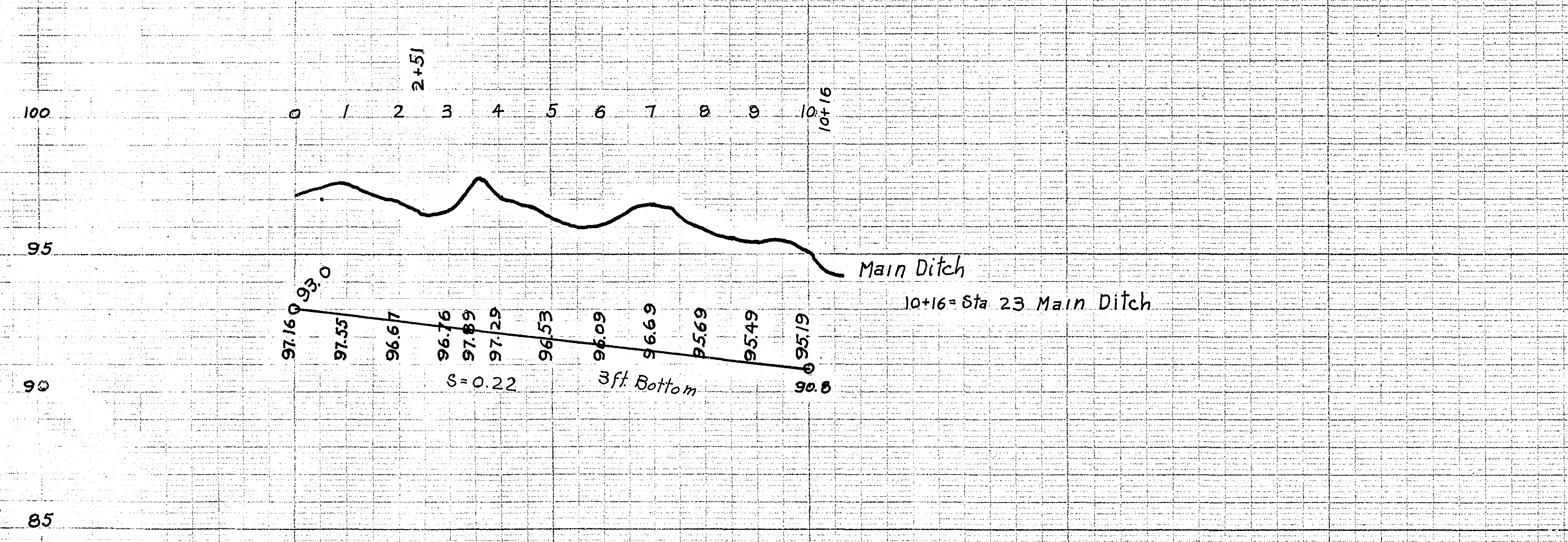
MAIN DITCH



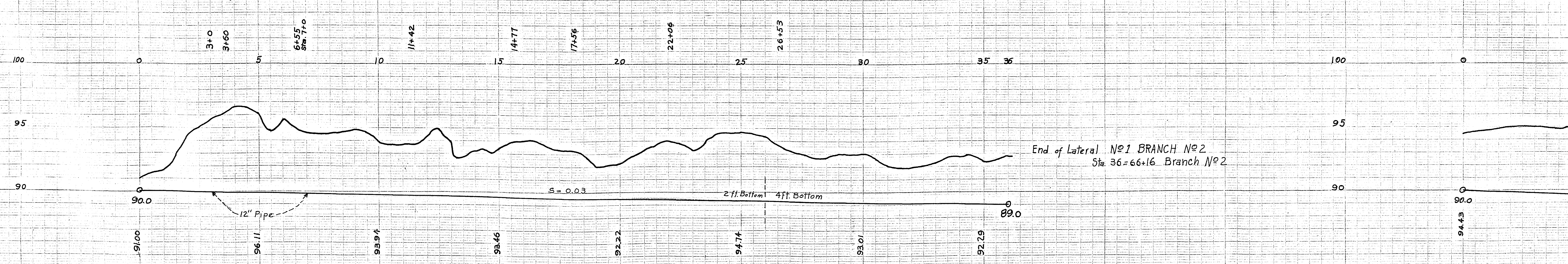
UNIVERSITY OF CALIFORNIA
A. J. HAN



BRANCH No 1



LATERAL No 1 of BRANCH No 2



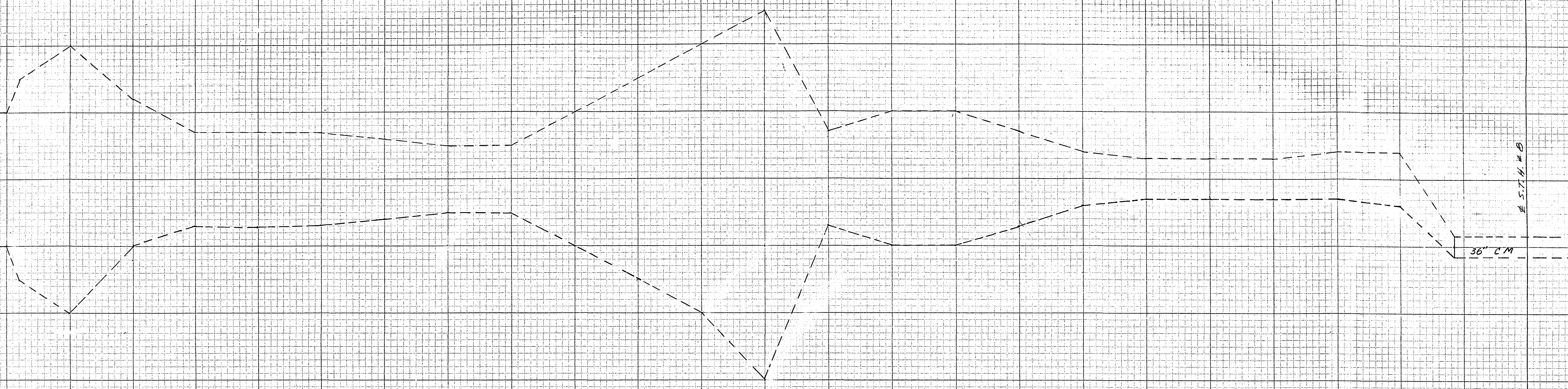
50

55

60

65

70

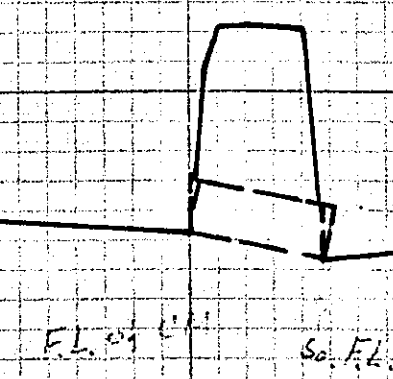


EST. 4. 8

36" L.M.

885.0

LOIS DRIVE



6.2' 4" L.H. 6.0' R.H.

70' - 4" H. 8

OFFICE OF
RAMSEY COUNTY ENGINEER
 DEANE R. ANKLAN
JUDICIAL DITCH NO. 1
 FROM NORTH COUNTY LINE TO T.H. 8
PROFILE

SCALE: 1"=100'

FEB. 6, 1963

890

880

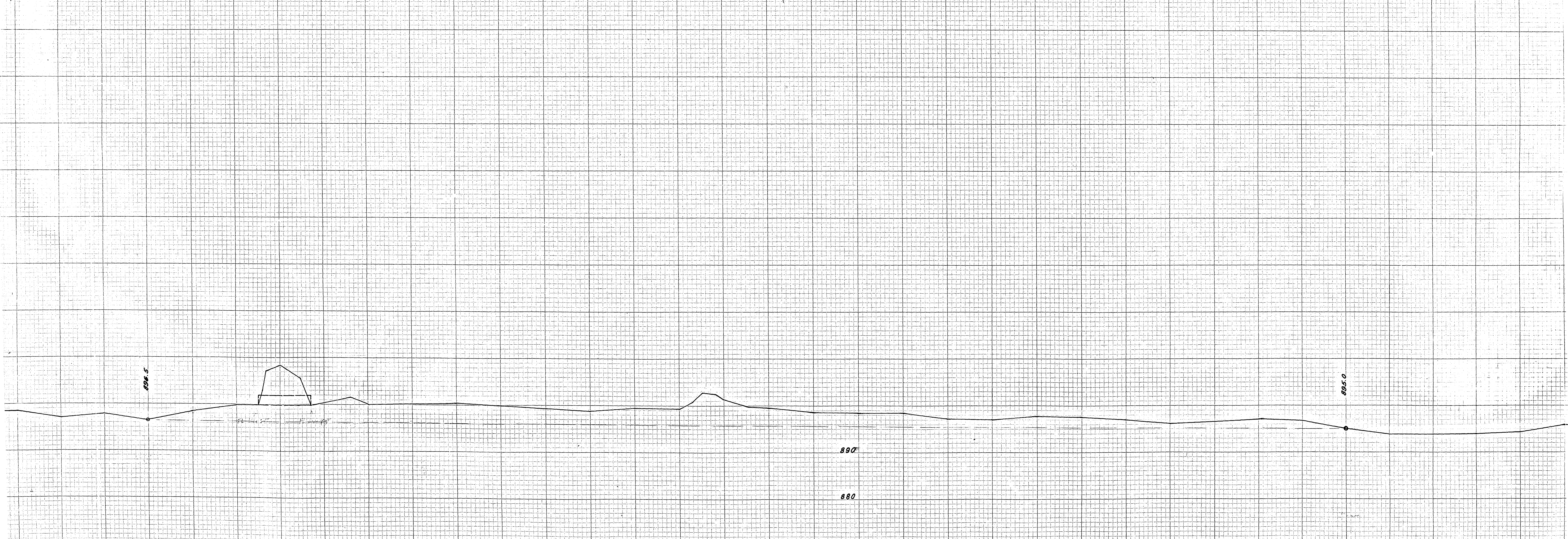
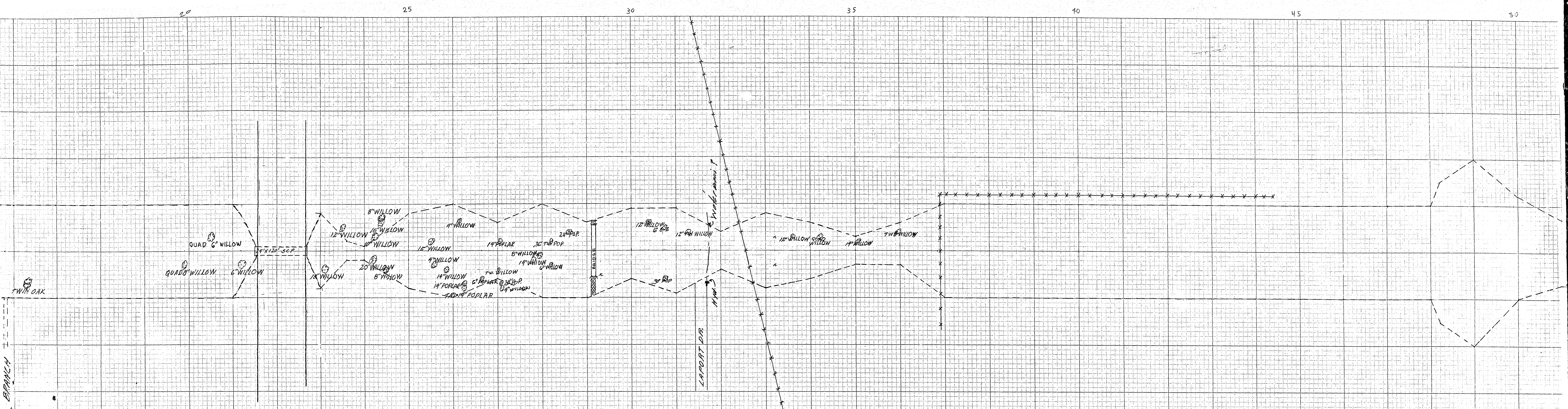
50

55

60

65

70



5

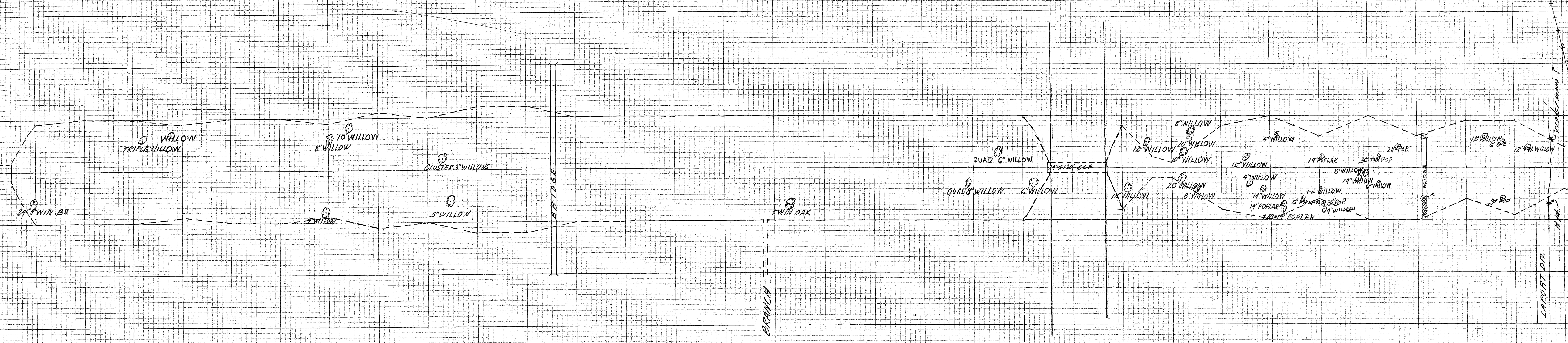
10

15

20

25

30



NORTH COUNTY LINE

910
900
890
880

894.5