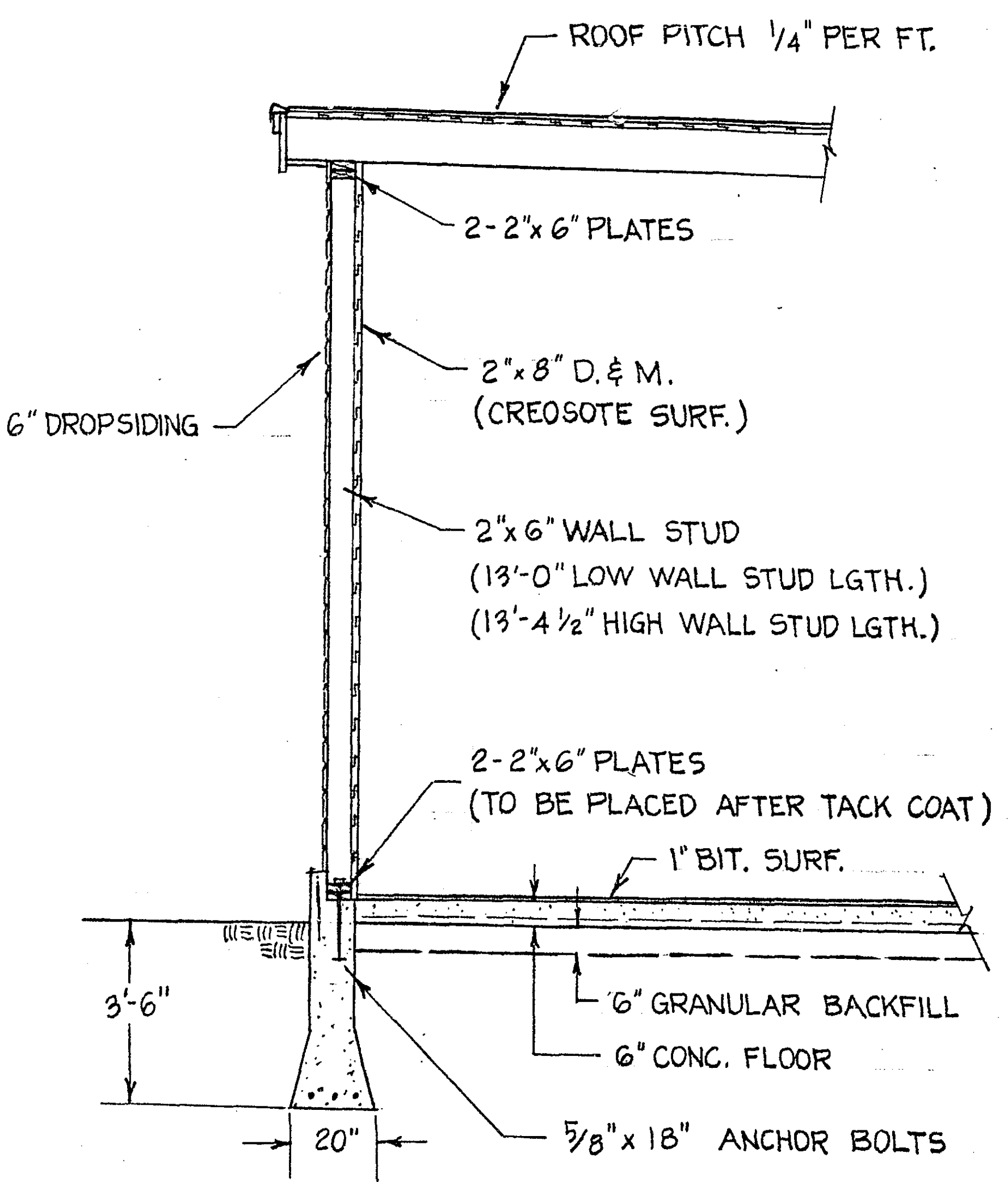
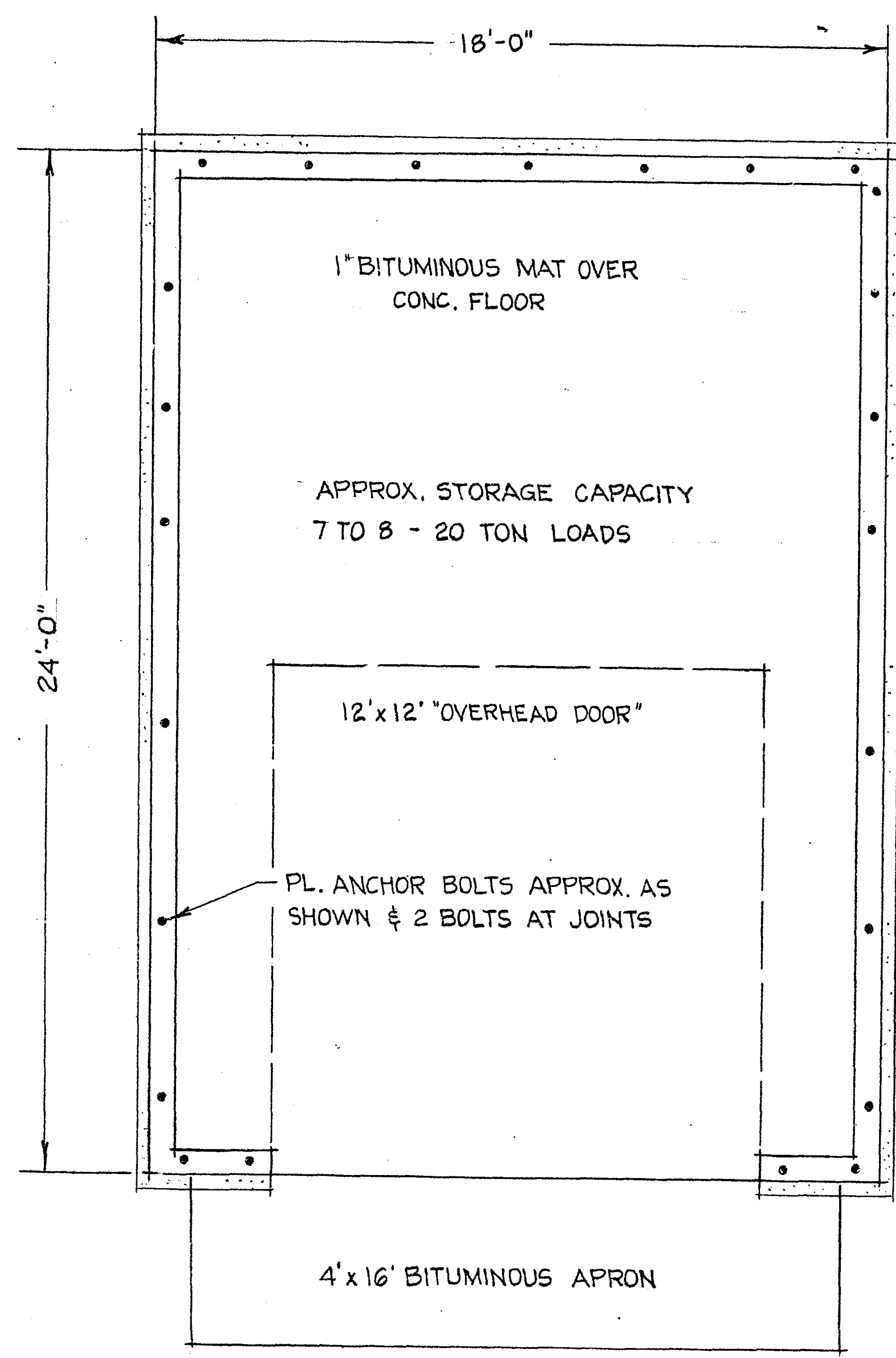


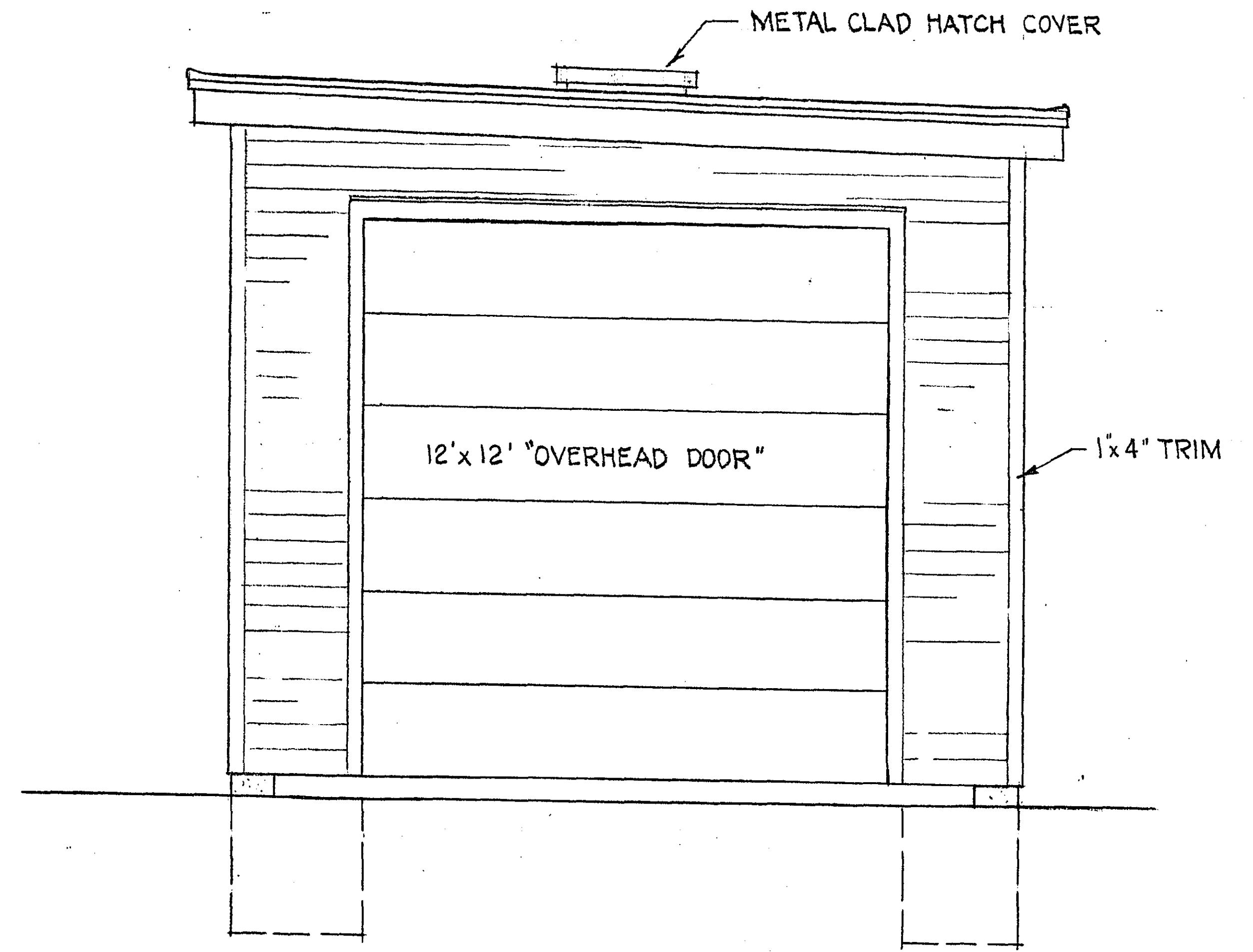
SECTION THRU WALL
SCALE 1/2" = 1'-0"



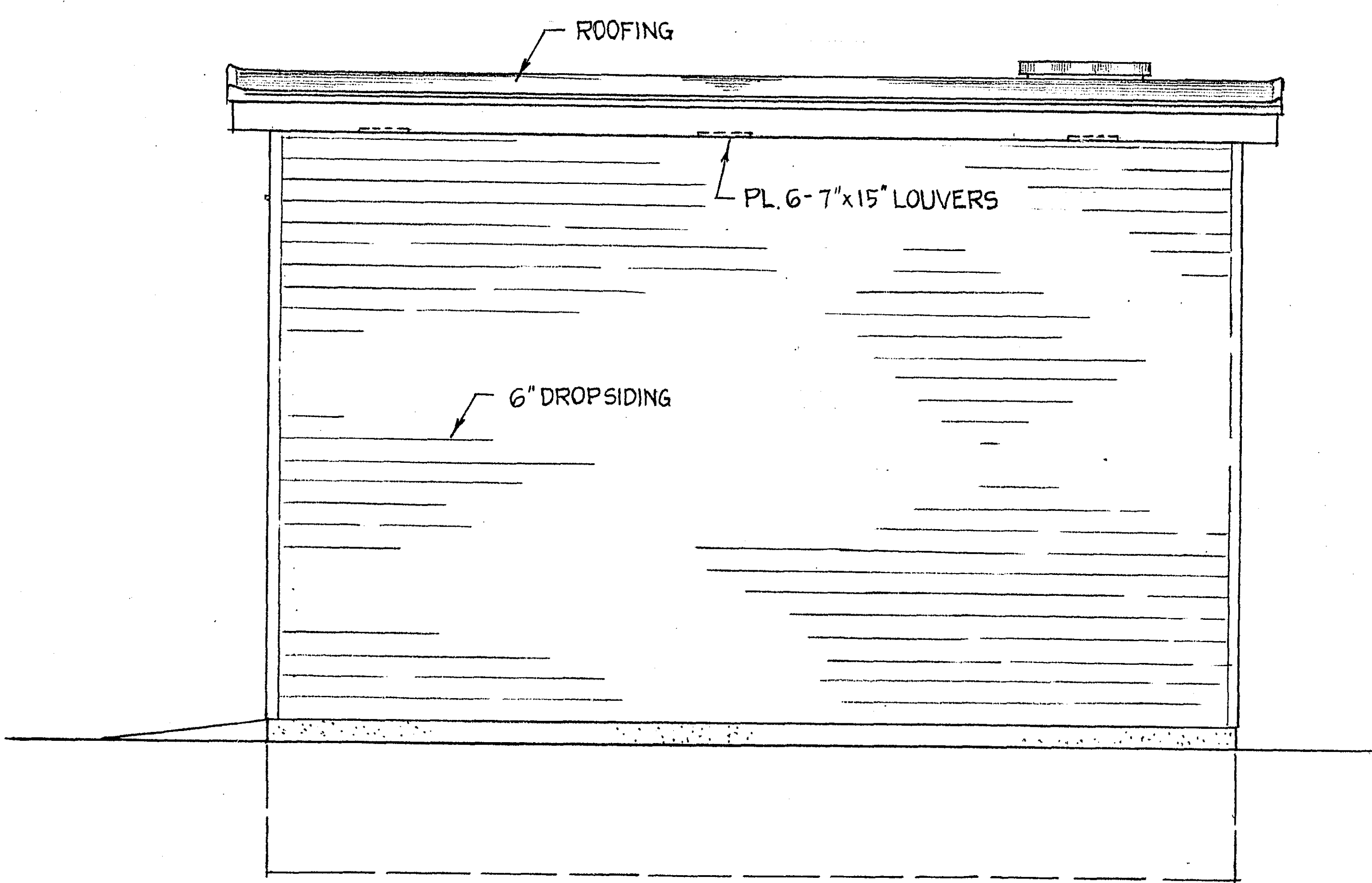
TYPICAL WALL SECTION



PLAN

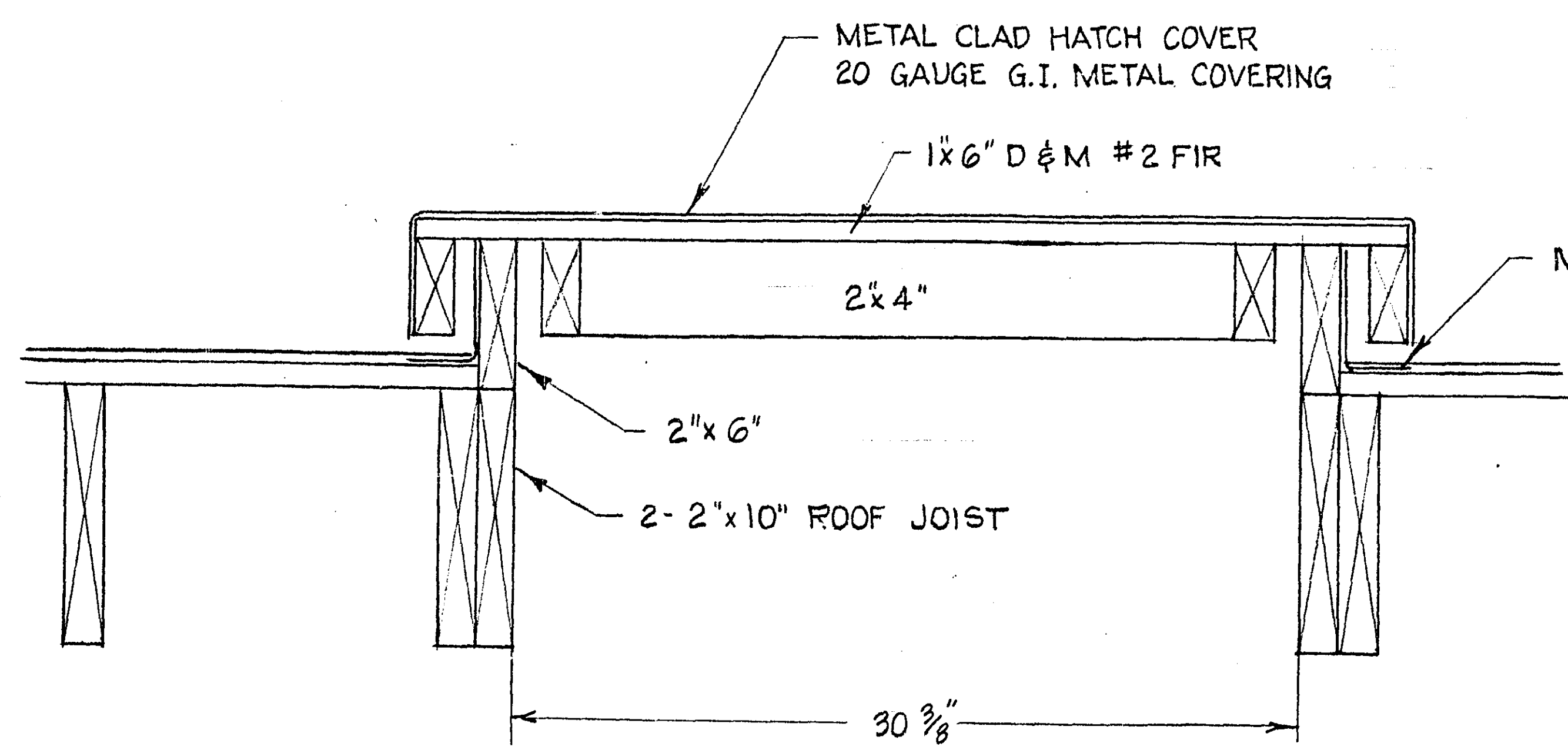


FRONT ELEVATION

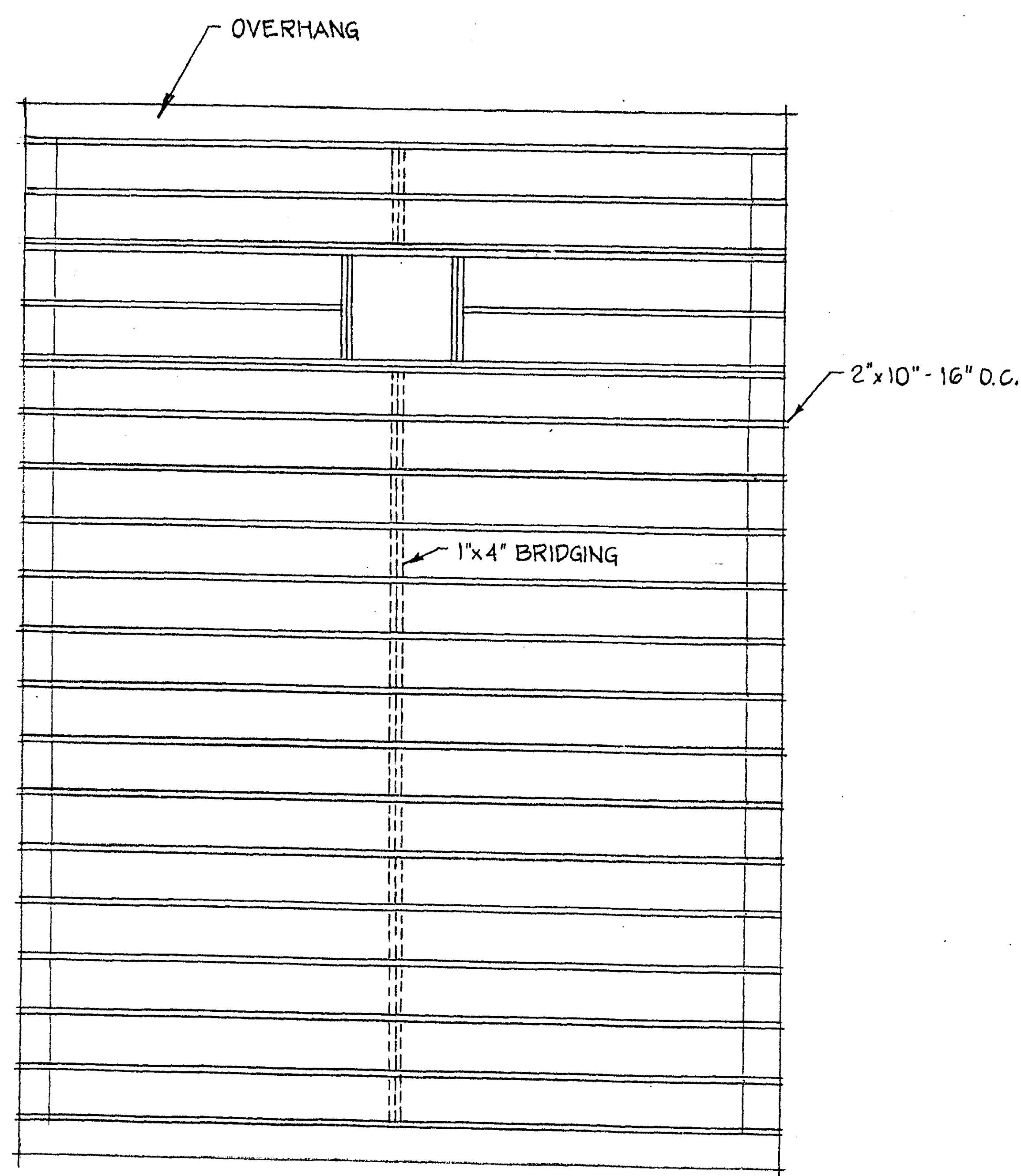


RIGHT SIDE ELEVATION

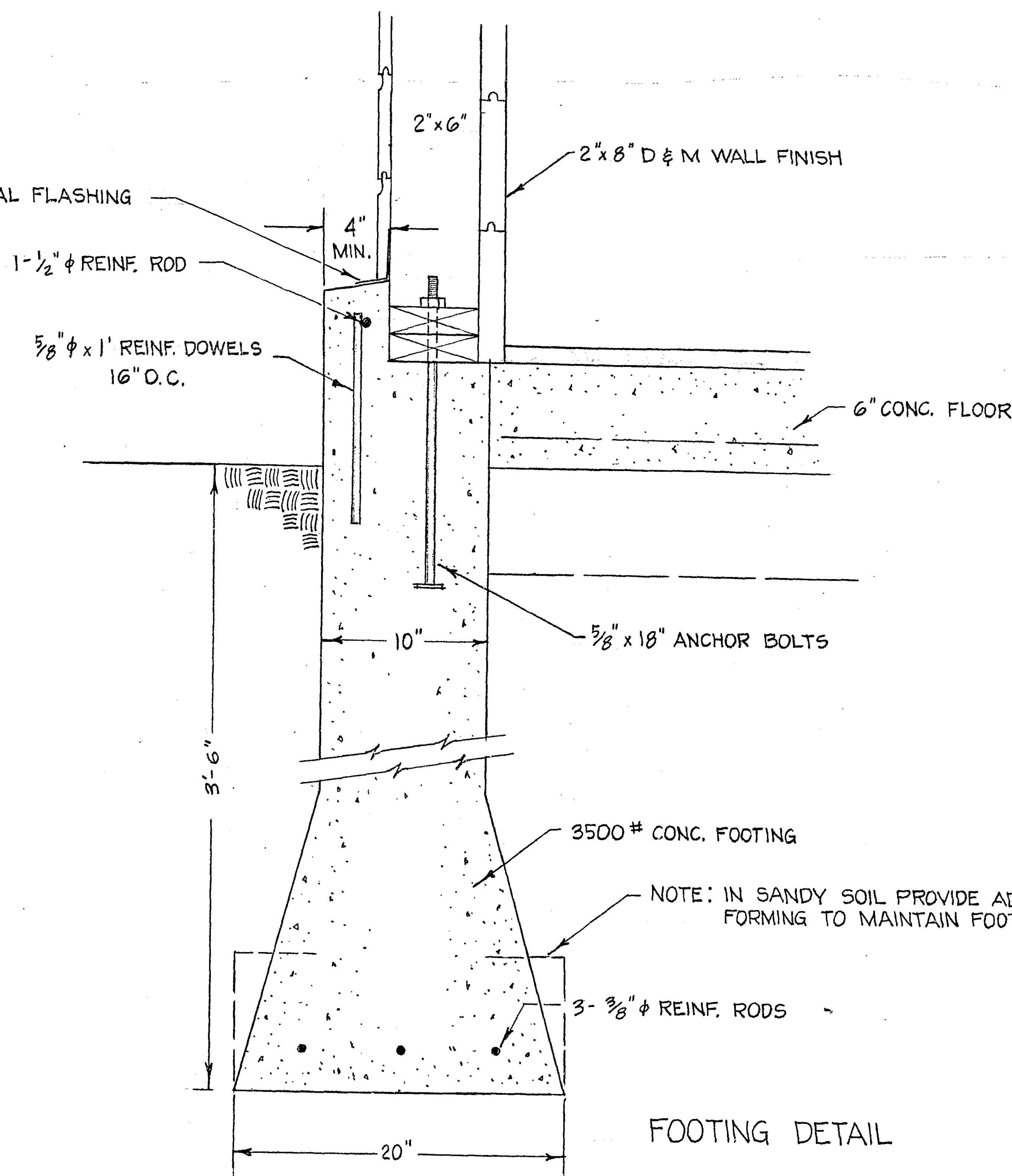
R-805



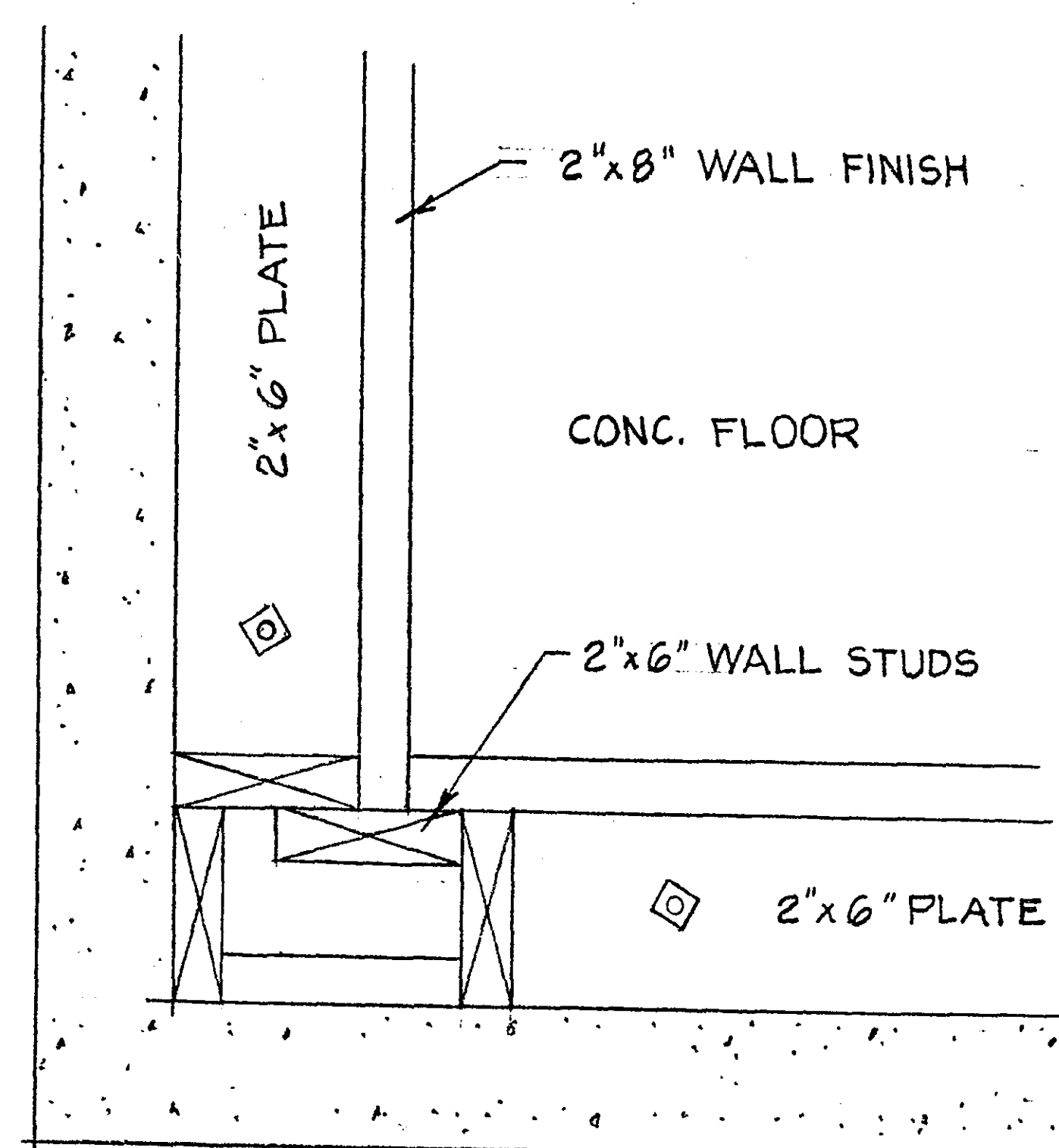
HATCH COVER DETAIL



ROOF FRAMING PLAN
SCALE 1/4" = 1'-0"



FOOTING DETAIL



NOTE: USE 1x4" LET-IN CORNER BRACING

CORNER FRAMING DETAIL

EXCAVATION:
 Footing, 1.0' x 3.5'
 1.0' x 3.5' x 71.3333' (net perimeter) equals 9.25 cu.yds.
 27

Slab, Gravel Base 0.5' Thick
 0.5' x 16.8333 x 22.8333 plus 0.5' x 12.0 x 0.5833 equals 7.25 cu.yds.
 27

GRANULAR BACKFILL:
 Slab,
 0.5' x 17.0' x 23.0' plus 0.5' x 0.5' x 12' equals 7.35 cu.yds.
 27

Apron,
 16.0 x 4.0 x 0.25 equals 0.59 cu.yds.
 27

CONCRETE:
 71.3333' x 1.0' x 4.125' equals 10.898 cu.yds. (Footing)
 27

BIT. SURF:
 17.0 x 23.0 plus 0.5' x 12' equals 44.11 sq.yds. x 100# per sq.yd. equals 2.21 Tons Mixture Floor
 2000

Tack Coat equals 24' x 18' equals 48 sq.yds. @ 0.05 gal. per sq.yd. equals 2.40 Gal. Oil Floor
 9

4' x 16' equals 7.11 sq.yds. x 200# per sq.yd equals 0.71 Tons Mixture (Apron) Floor
 2000

7.11 x 0.3 gal. per sq.yd. equals 2.13 gal. Oil (Apron) Prime Coat

STEEL:
 Floor Mesh (6 x 6 x 6/6)
 44.11 sq.yds. x 9 equals 396.99 sq.ft.
 397 divided by 750 equals 0.52 rolls

3/8" φ, Bars
 3 x 18.33' (Arg.lgth.) equals 54.99 lin.ft.
 6 x 24.33' " " equals 145.98 " "
 6 x 3.167' " " equals 19.00 " "
 9.00 " " (Bar Lap)
 228.97 Lin.Ft. x 0.376# /lf equals 86.09#

1/2" φ, Bars
 2 x 24.33' equals 48.66 L.F.
 2 x 3.167 equals 6.33 " "
 1 x 18.33 equals 18.33 " "
 73.32 plus 3' Lap equals 76.32' x 0.668# /lf equals 50.98#

5/8" φ
 56 dowels @ 1.0' long equals 56.0' x 1.043# /lf equals 58.41#

ROOFING, 4 PLY-BUILT UP
 20' x 26' equals 520 sq.ft. 520 - 7.78 equals 612.2 sq.ft. equals 5.12 squares
 2.79' x 2.79' equals 7.78 sq.ft. (out)

OVERHEAD DOOR:
 12' x 12' Door

SHEETMETAL:
 28 gauge sheet metal for Flashing and Hatch Cover

PAINT AND CREOSOTE:
 3 gals. White Primer
 3 gals. Outside White
 2 gals. Creosote

LUMBER AND HARDWARE:
 See separate sheet

R-905