

NOTES:  
 1. ALL SWING DOORS TO BE GOTO A. INDUSTRIAL.  
 2. ALL WINDOWS TO BE B-24141 - C.P. UNITS.  
 3. 14" WIDE LEAN-TO FULL LENGTH BOTH SIDES.

FLOOR PLAN

NO.	REVISION	BY	DATE

ARMCO BUILDING FOR  
HOCKEY RINK

SHEET 1 OF 2

ARMCO DRAINAGE & METAL PRODUCTS, INC.  
NORTHWESTERN DIV. - MINNEAPOLIS, MINN.

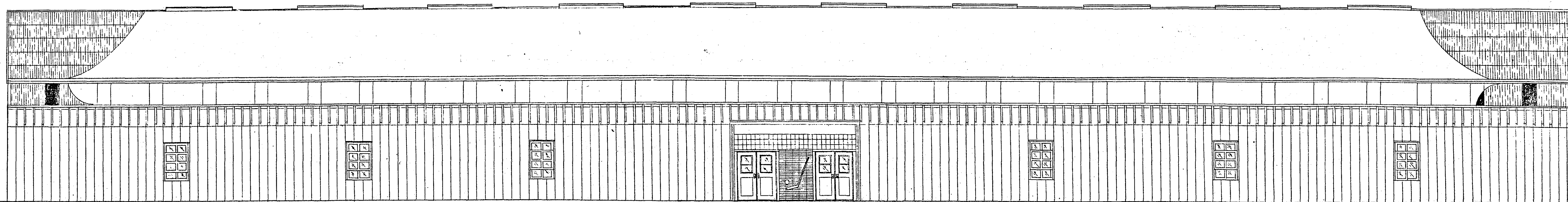
DATE 1-9-58

DRAWN RWT

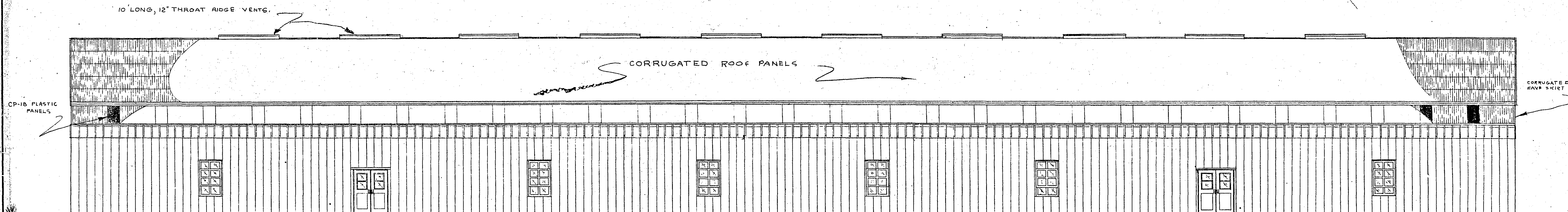
SCALE 3/8" = 1'-0"

CHECKED

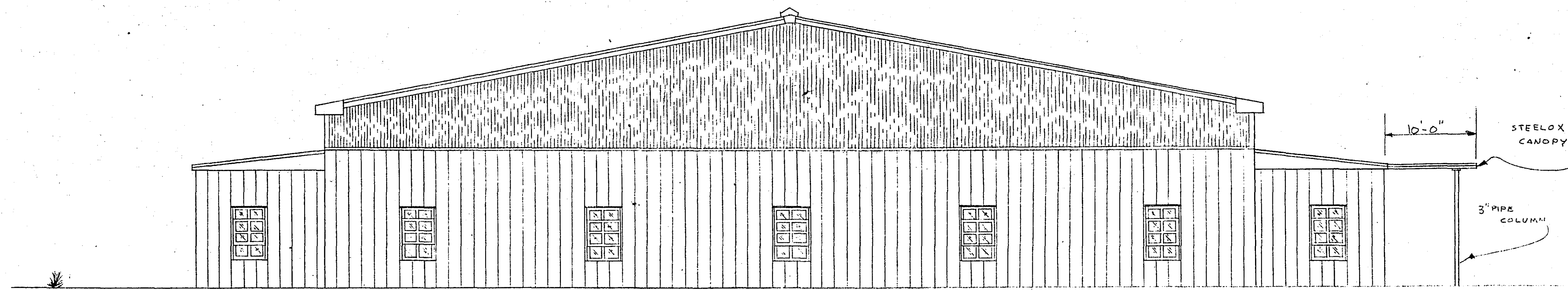
DRAWING NO. NW-58-1-9



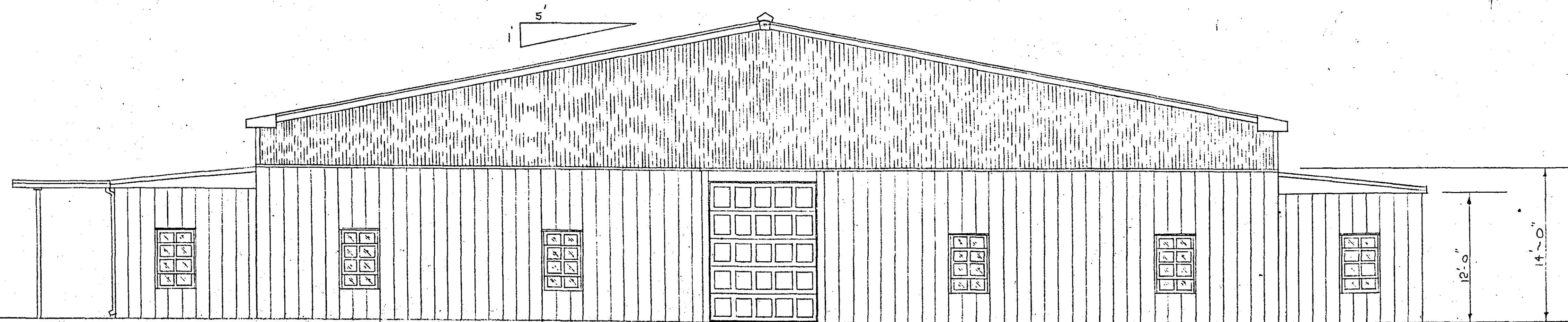
FRONT ELEVATION



REAR ELEVATION



LEFT ELEVATION



RIGHT ELEVATION

NO.	REVISION	BY	DATE

**HOCKEY RINK**

SHEET 2 OF 2

ARMCO DRAINAGE & METAL PRODUCTS, INC.  
NORTHWESTERN DIV. - MINNEAPOLIS, MINN.

DATE 1-13-57

DRAWN *RWK*

SCALE 1/8" = 1'-0"

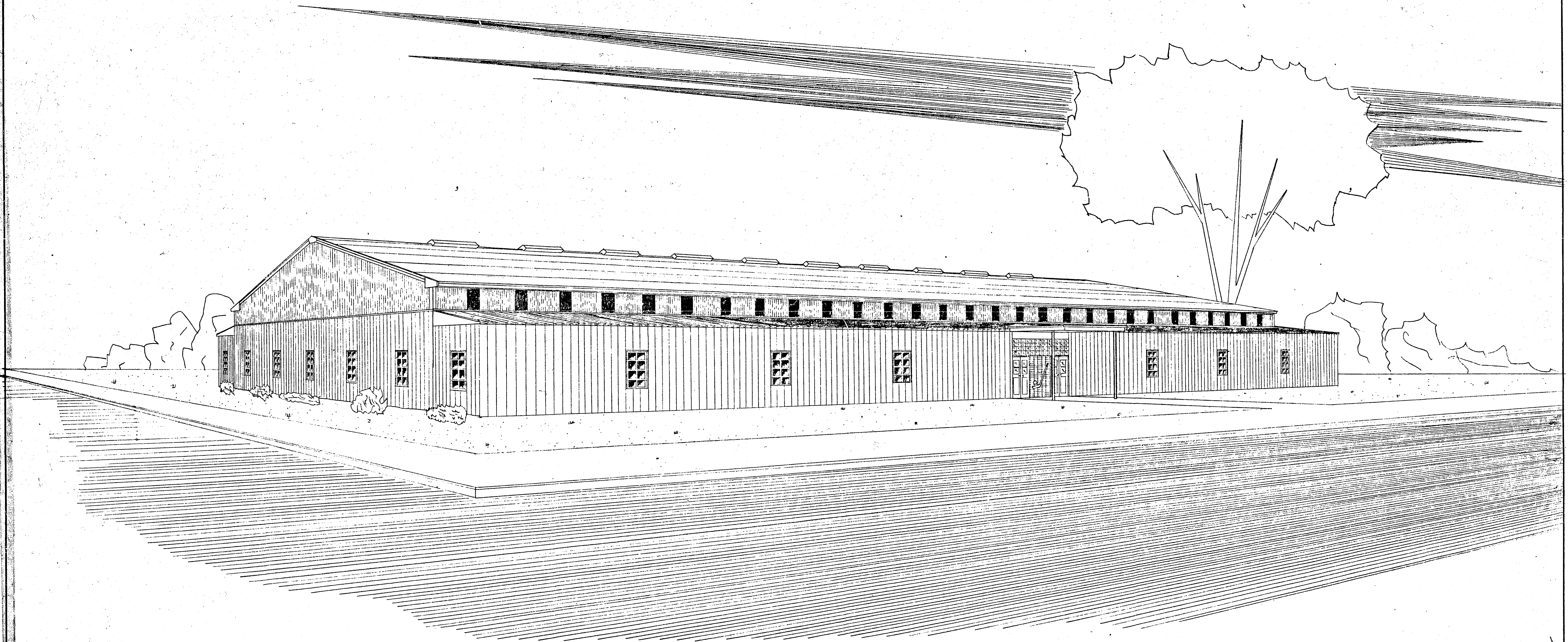
CHECKED

DRAWING NO. NW-58-1-13

R2991

#80000<sup>00</sup>

80/750



R-791

NO.	REVISION	BY	DATE

HOCKEY RINK

DATE 1-19-58  
DRAWN RWJ  
SCALE NHP  
CHECKED  
DRAWING NO.  
NW-58-1-14

ARMCO DRAINAGE & METAL PRODUCTS, INC.  
NORTHWESTERN DIV. - MINNEAPOLIS, MINN.