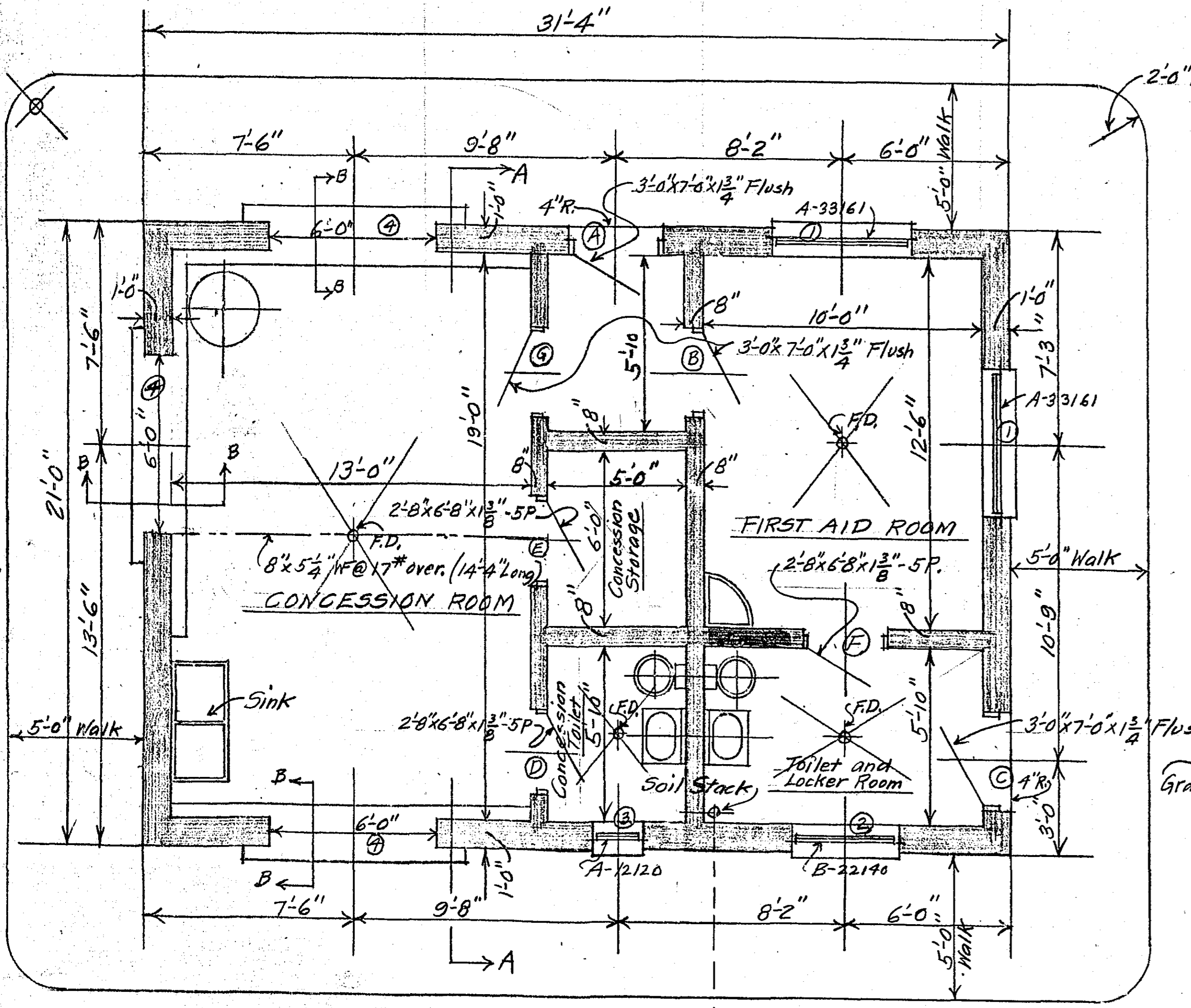
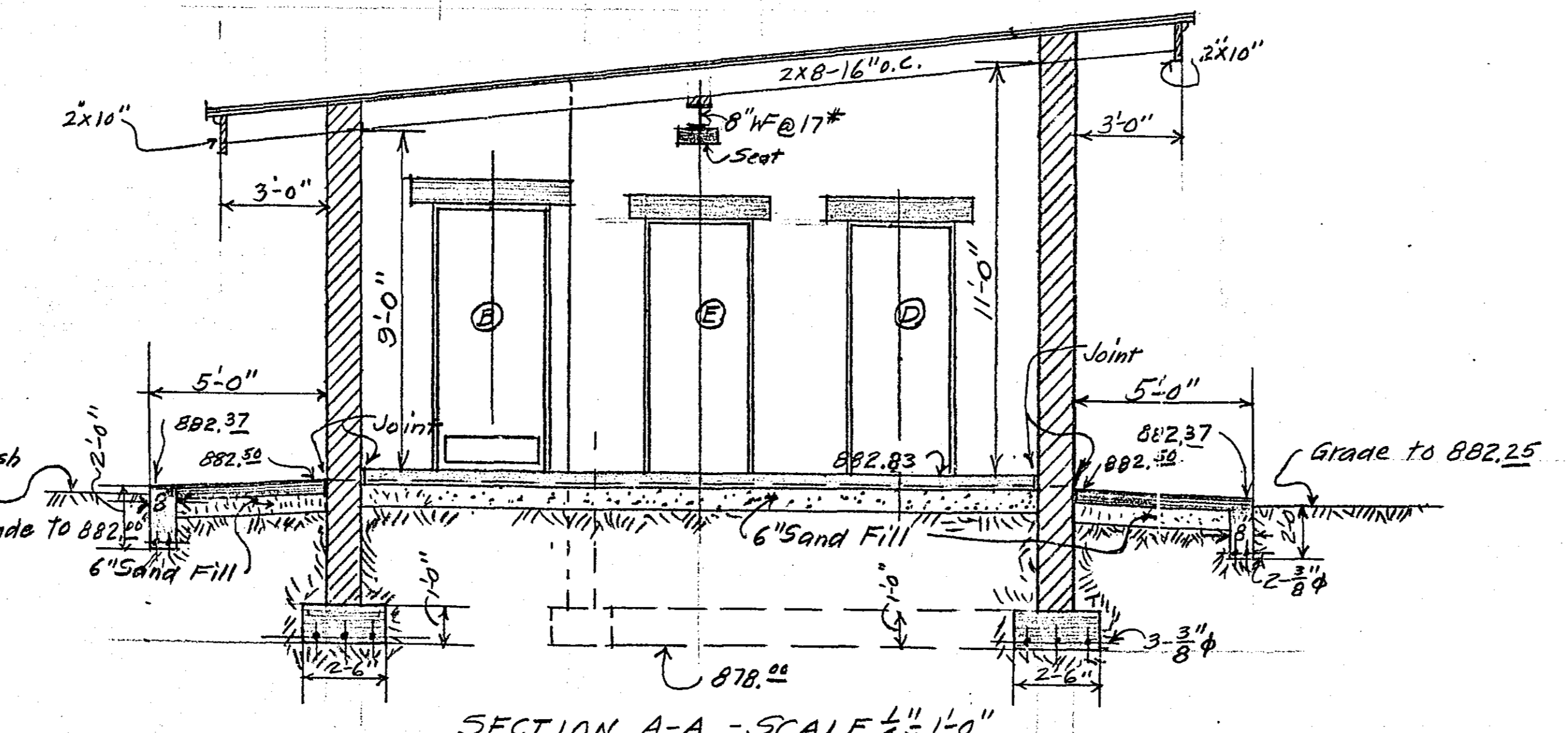


LOCATION AND TOPOGRAPHY - SCALE 1"=20'-0"

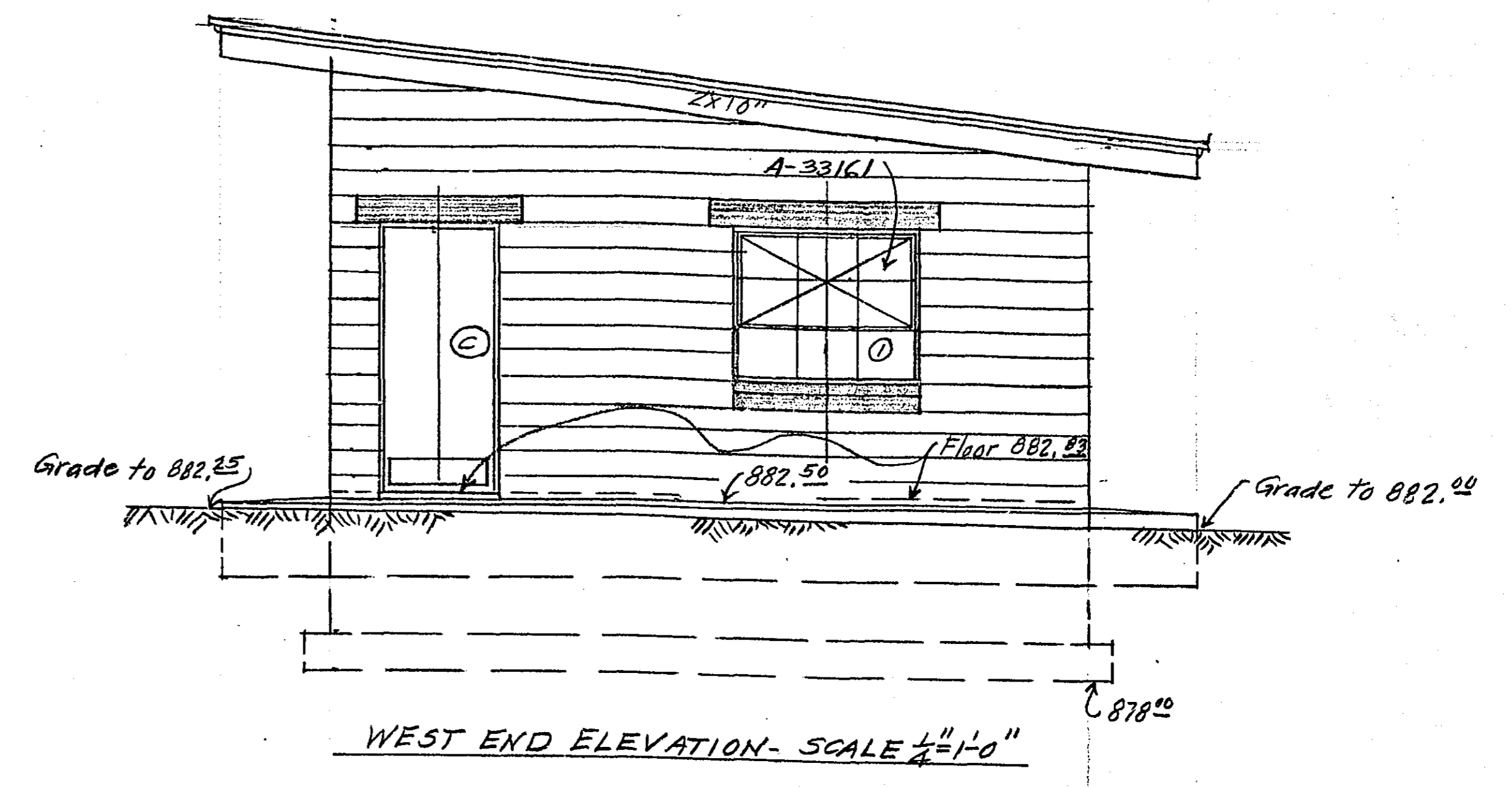
Note: Floor Elevation 882.83 is the elevation at surrounding wall lines of all rooms. Rooms having floor drains will have floors pitched down to drains by 1/2"



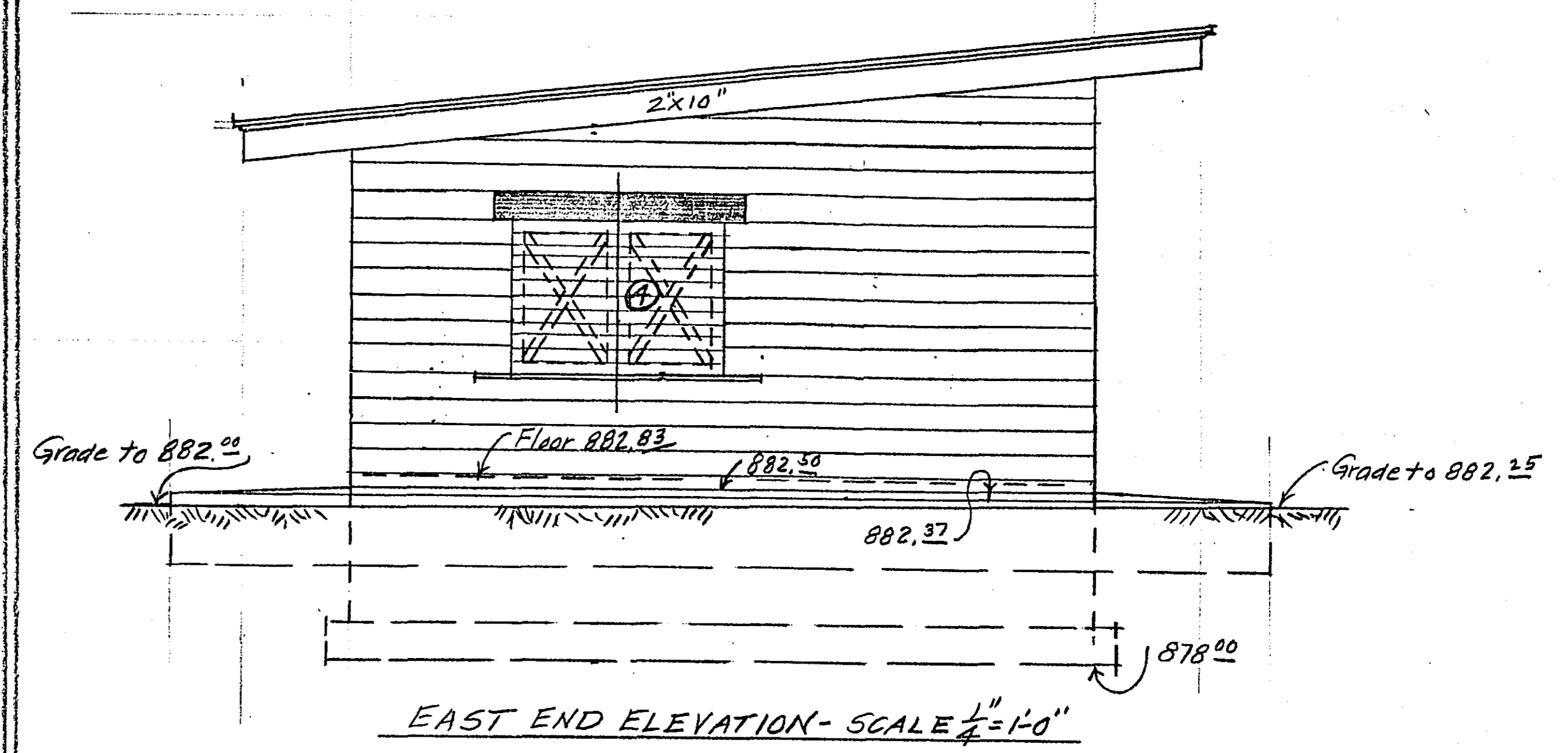
FLOOR PLAN - SCALE 1/4"=1'-0"



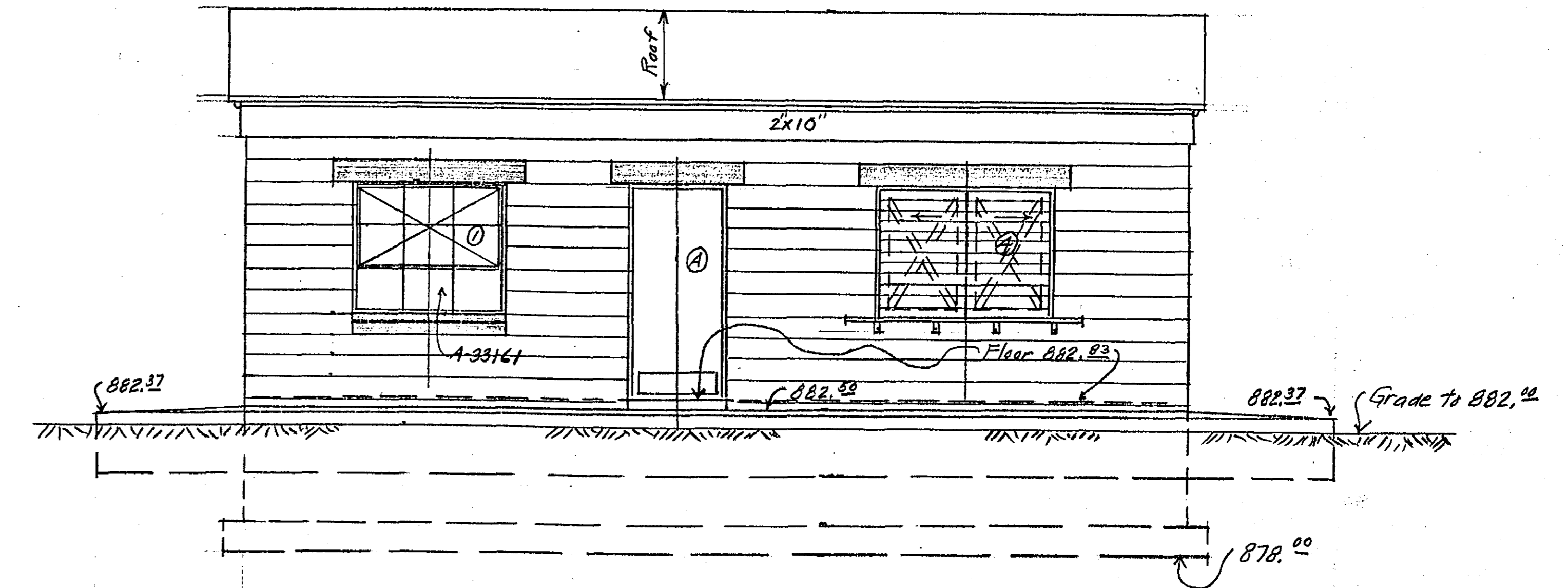
SECTION A-A - SCALE 1/4"=1'-0"



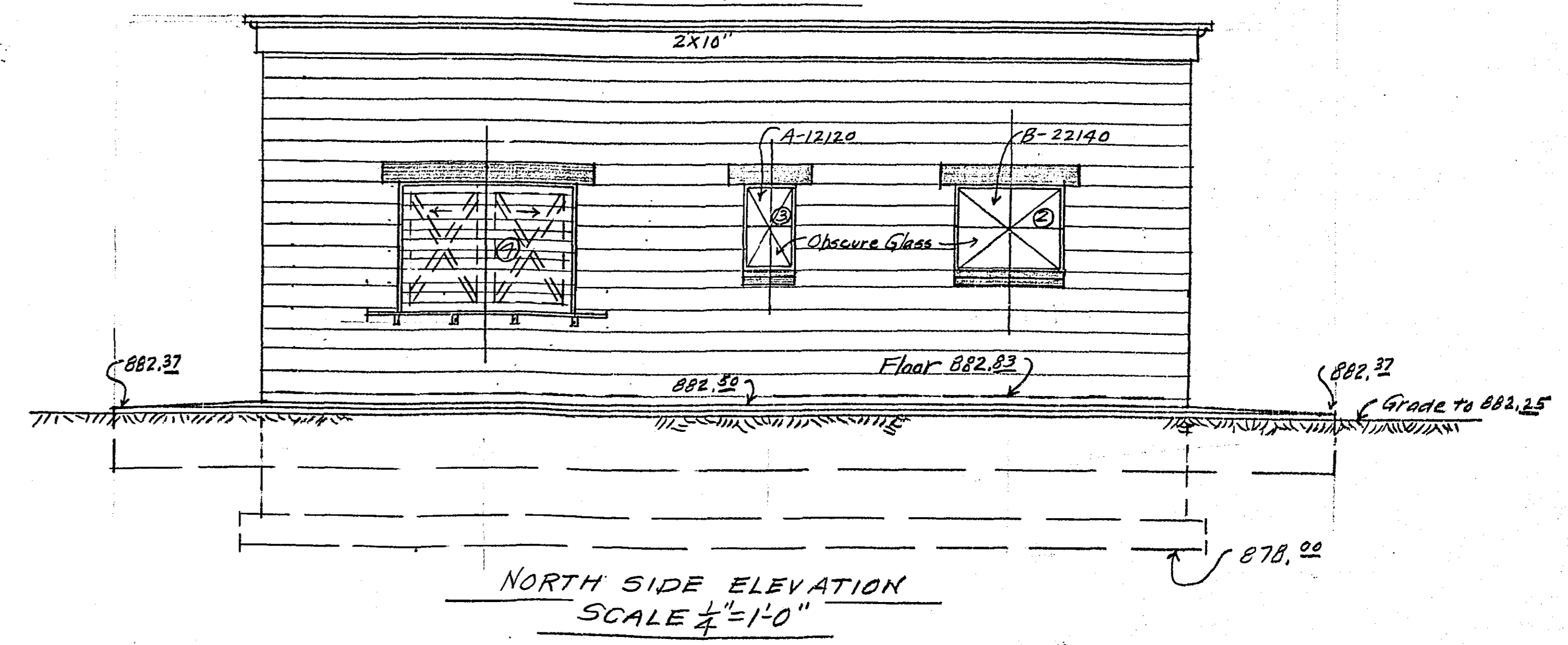
WEST END ELEVATION - SCALE 1/4"=1'-0"



EAST END ELEVATION - SCALE 1/4"=1'-0"

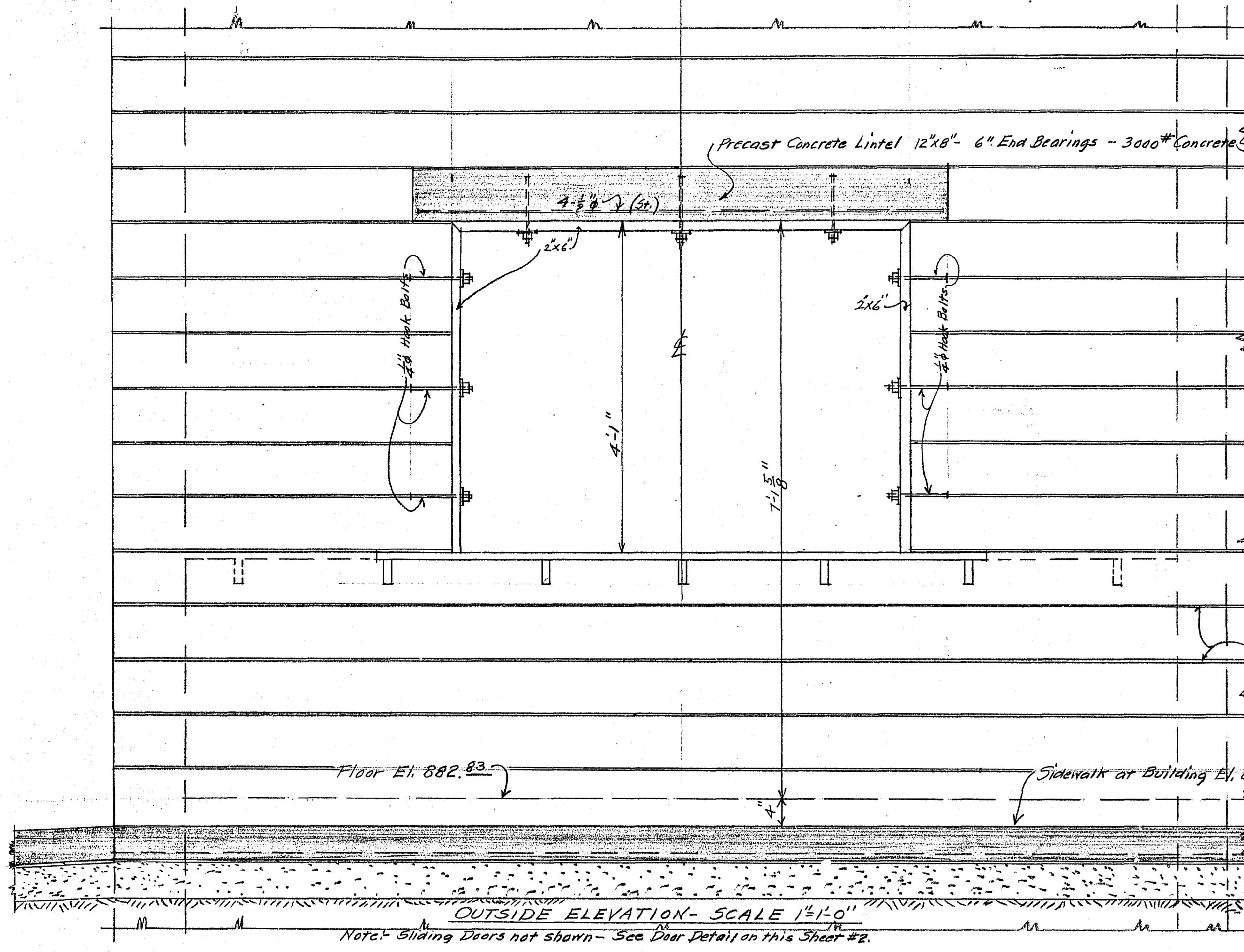
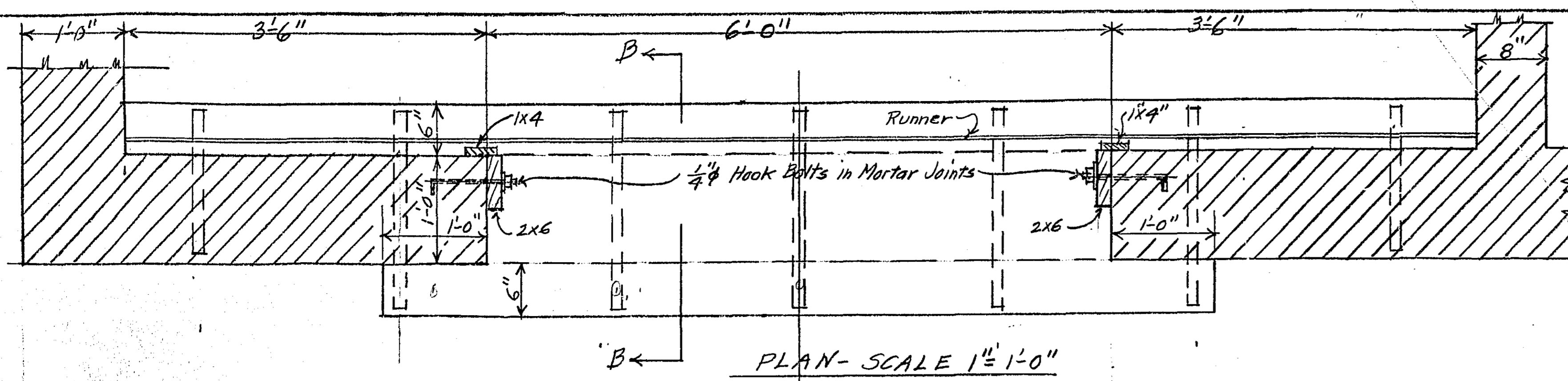


SOUTH SIDE ELEVATION - SCALE 1/4"=1'-0"



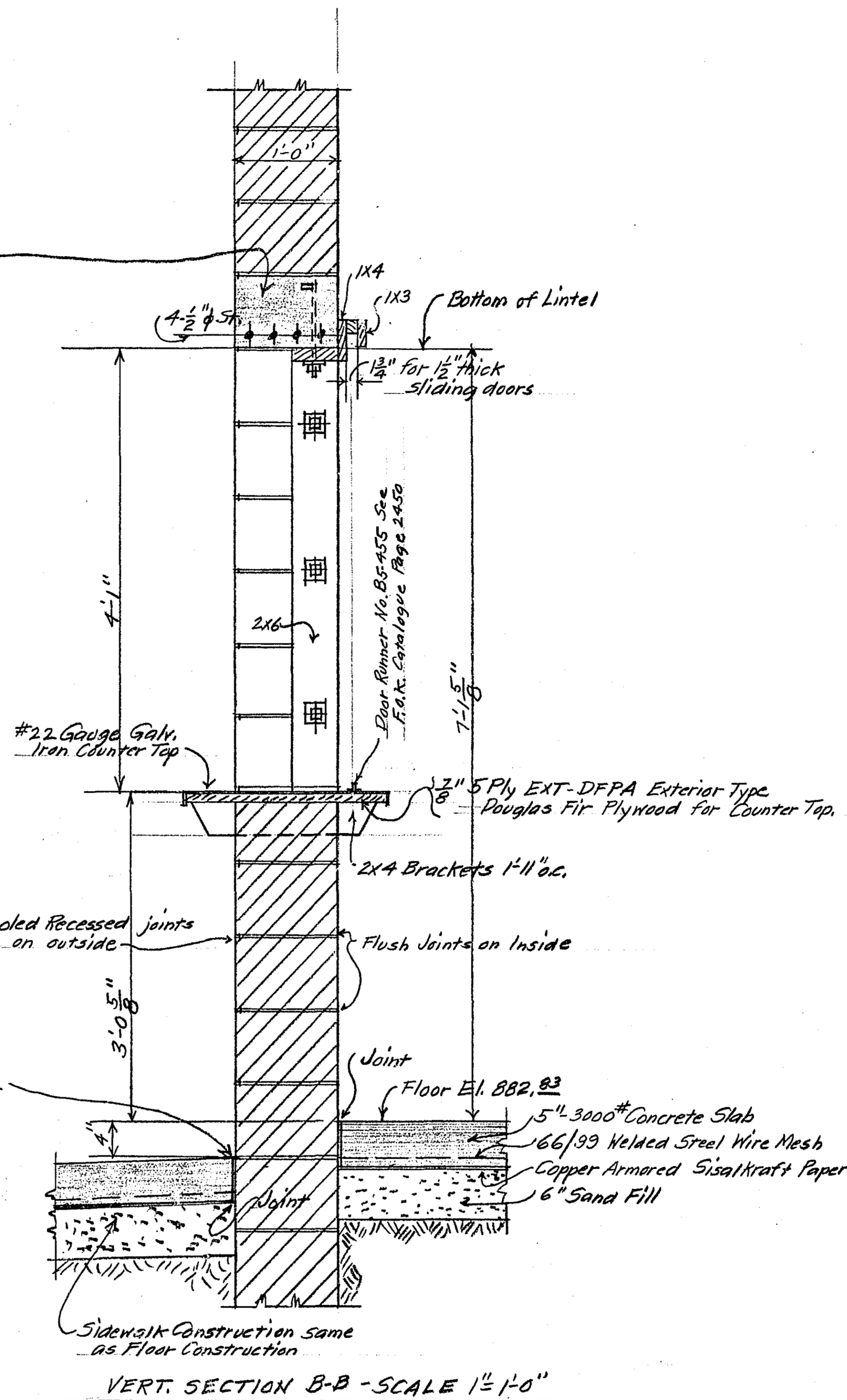
NORTH SIDE ELEVATION - SCALE 1/4"=1'-0"

PROPOSED REFECTORY BUILDING  
FOR  
LAKE JOHANNA PICNIC AREA - RAMSEY COUNTY, MINN.  
JUNE, 1958  
SCALES NOTED  
OFFICE OF COUNTY ENGINEER  
Henry S. Brown  
COUNTY ENGINEER

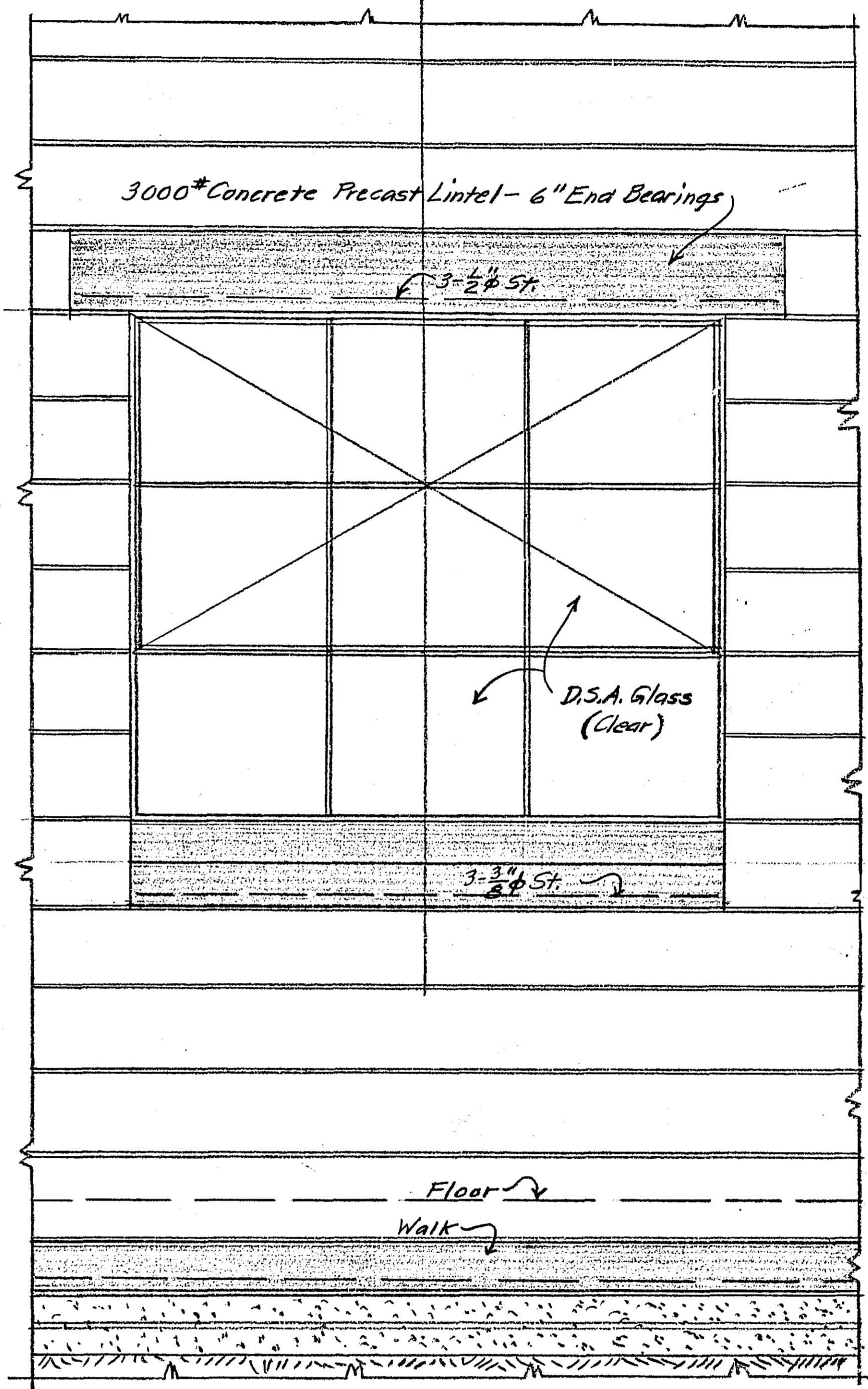
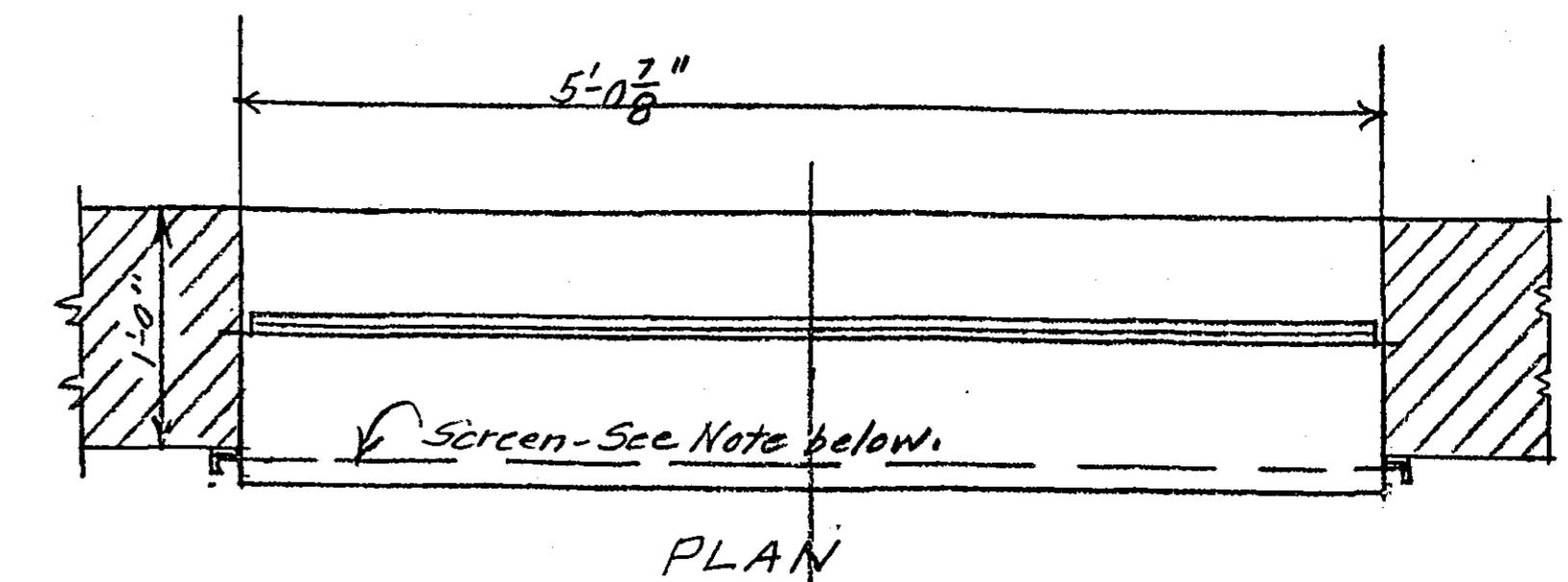


Note: Sliding Doors not shown - See Door Detail on this Sheet #2.

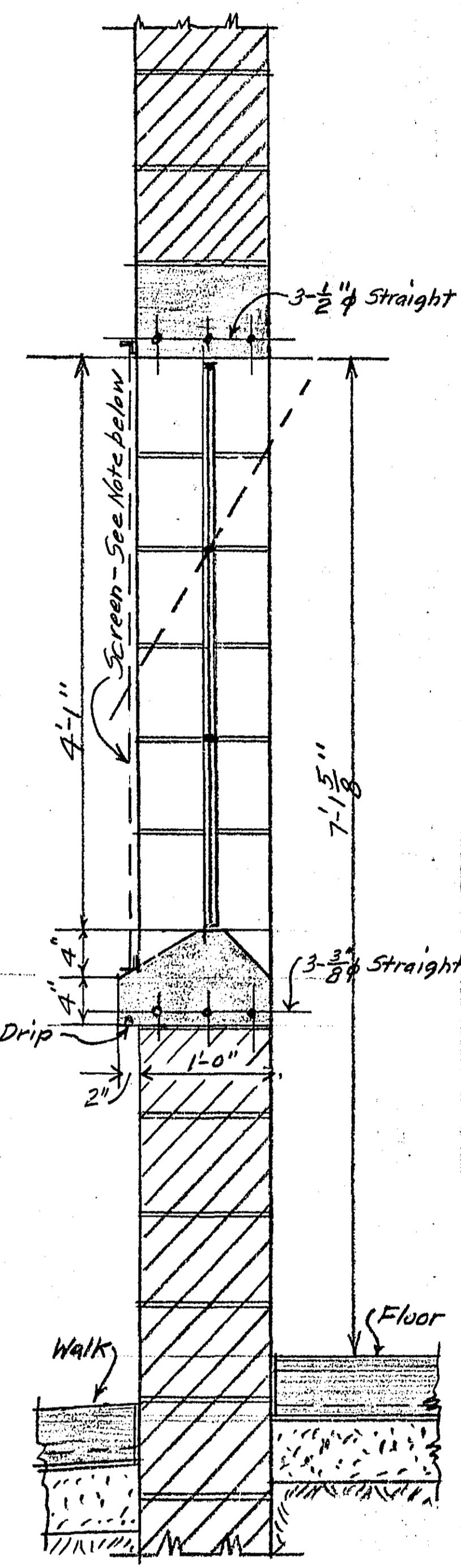
DETAIL OF SERVICE WINDOW OPENINGS - 3 THUS - SCALE NOTED



VERT. SECTION B-B - SCALE 1 1/2"=1'-0"



OUTSIDE ELEVATION



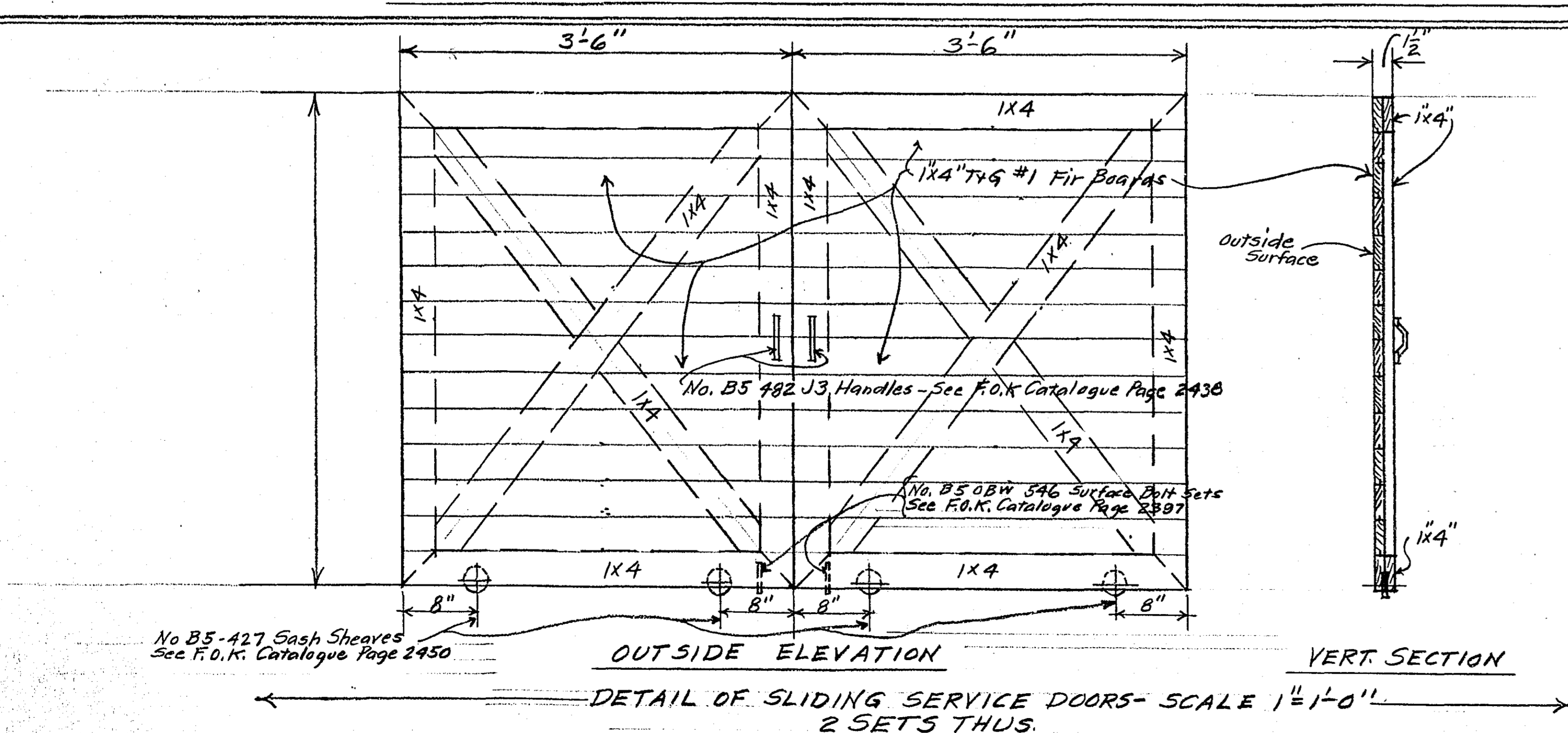
VERT. SECTION

DETAIL OF WINDOW OPENINGS ① - STEEL SASH - SCALE 1 1/2"=1'-0"  
 Note: Above Detail Covers Steel Sash Type 33161, for Windows #①. Windows #② and #③ will be similar except as to opening sizes and obscure glass. See Schedule below.

WINDOW SCHEDULE							
Window No.	Steel Sash Type	Masonry Opening Width	Masonry Opening Height	Glass	Concrete Lintel (6" End Bearings)	Sill	Number Required
①	A-33161	5'-0 7/8"	4'-1"	D.S.A. Clear	12x8" - 3-5/8" St. Bars	See Detail	2
②	B-22140	3'-8 3/4"	2'-9"	D.S.A. Obscure	12x8" - 3-5/8" St. Bars	"	1
③	A-12120	1'-8 3/4"	2'-9"	D.S.A. Obscure	12x8" - 3-5/8" St. Bars	"	1
④	See Detail of Service Windows			None	12x8" - 4-1/2" St. Bars	"	3

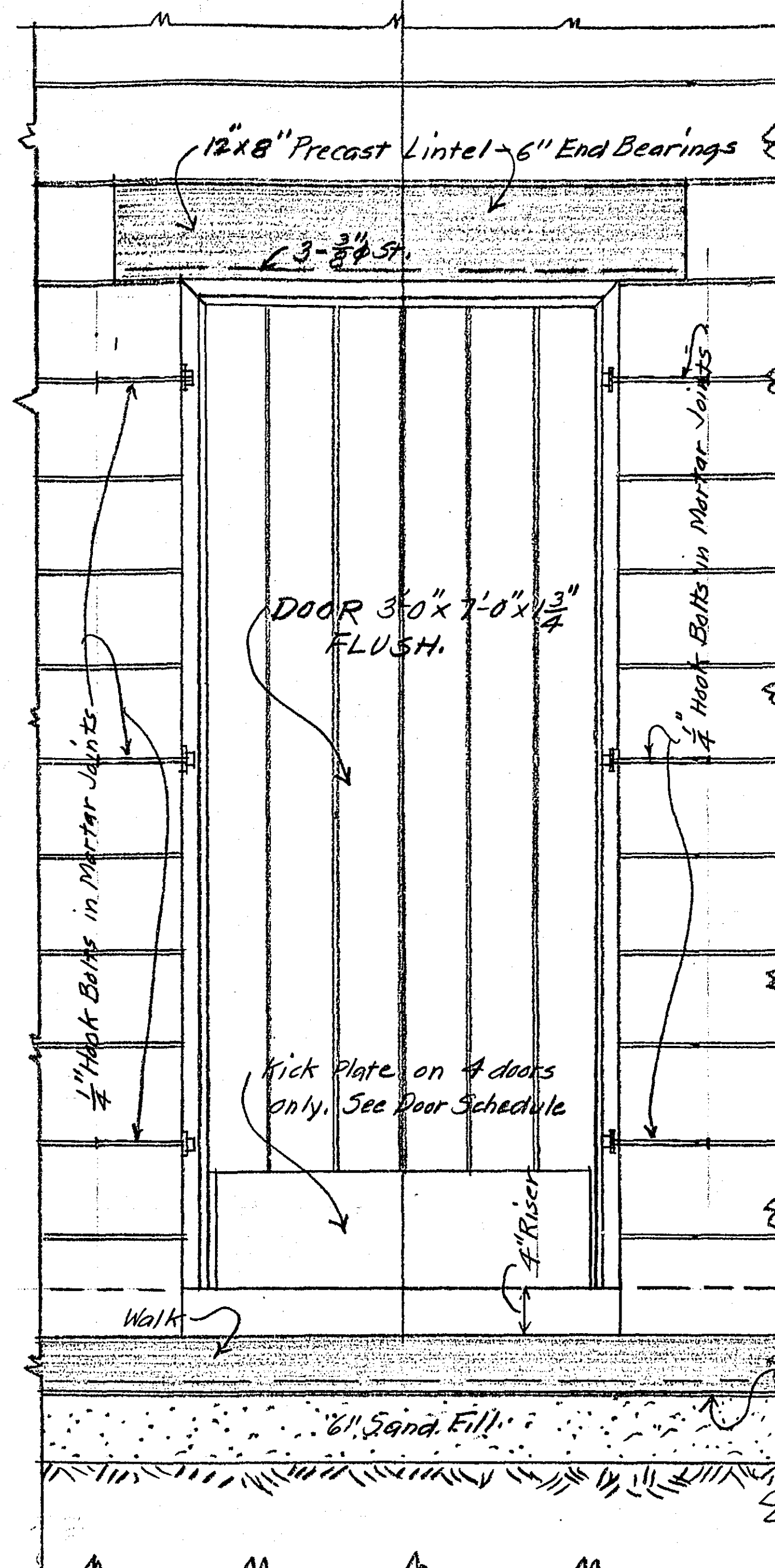
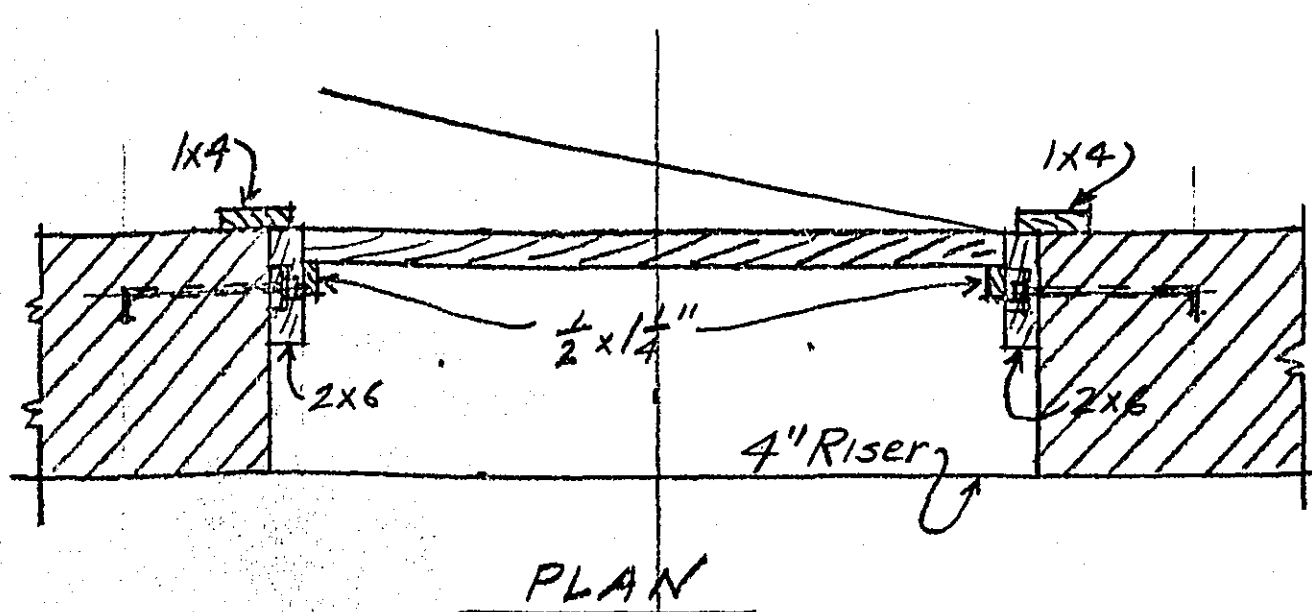
Note re glass: Glass in Windows #① will be Penverna D.S.A. clear, set in plastic putty. Glass in Windows #② and #③ will be Mississippi Glass Co's 'Syanite'.

Note: Bottoms of all Concrete Window Lintels to be 7'-1 5/8" above Floor.



DETAIL OF SLIDING SERVICE DOORS - SCALE 1 1/2"=1'-0"  
 2 SETS THUS.

Note: All Window Openings to be protected on outside wall line with 1/2" Diamond Mesh exp. metal screening set in steel angle frames and fastened with concrete nails to outside walls. It is desired to have the same type as those now in place over windows at the M'Correns Beach Bath House. Contractor will examine these and provide the same for this building. This screening only in openings 1, 2 and 3 for 4 Window Openings.



DETAIL OF DOORS A AND C - SCALE 1 1/2" = 1'-0"

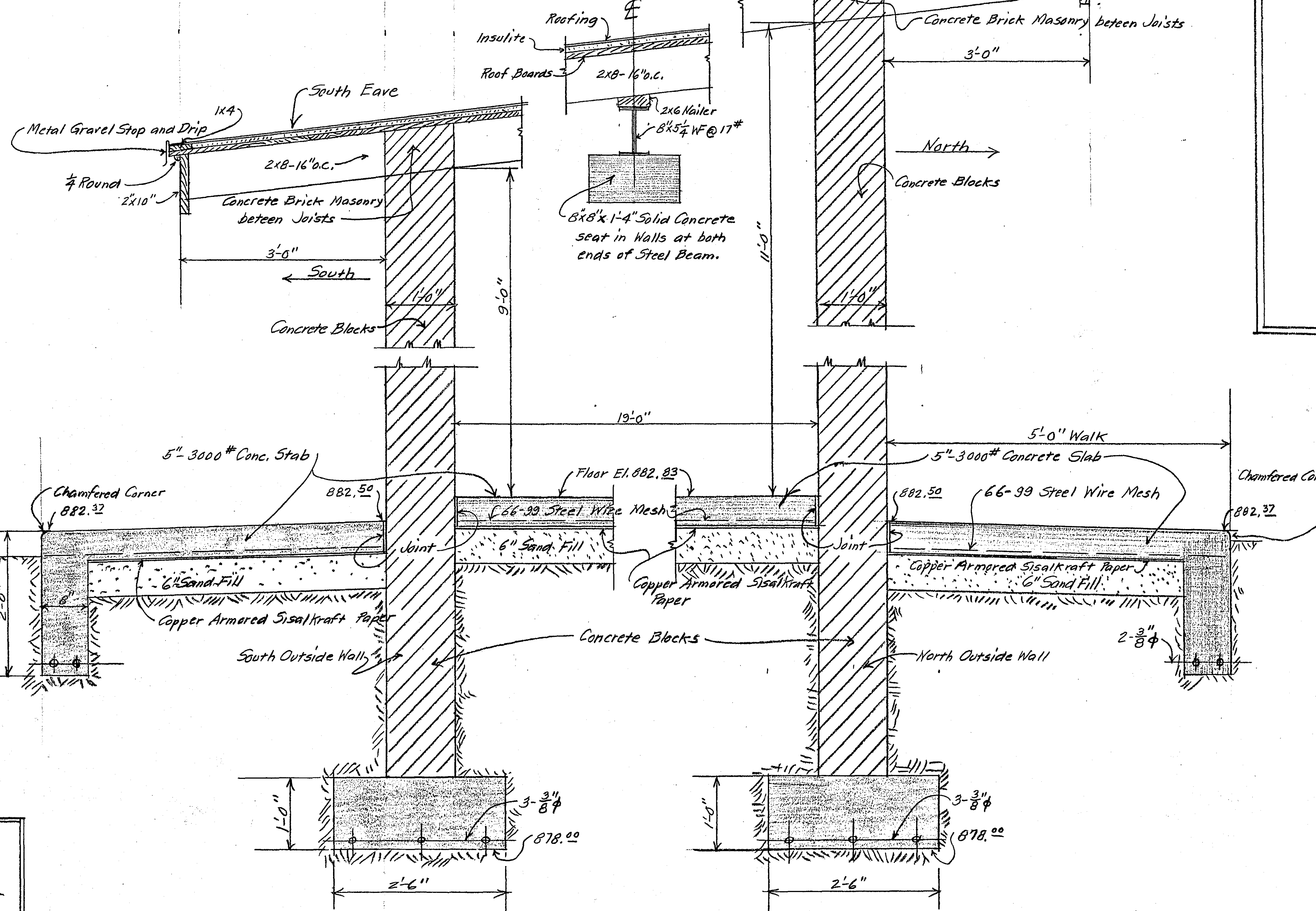
Note: Doors B and D are same as above except that they are in 8" thick walls. Doors E, F and G are same as above except that they are 2'-8" x 6'-8" x 1 3/8" doors in 8" walls. See Door Schedule below.

DOOR SCHEDULE					
Door	Size	Wall Thickness	Type	Lintel	Notes
A	3'-0" x 7'-0" x 1 3/8"	1'-0"	Flush - V Grooved - Fir	12x8" - 3-3/8" St. Reas.	Kick Plate Both Sides
B	3'-0" x 7'-0" x 1 3/8"	8"	Flush - V Grooved - Fir	8x8" - 3-3/8" St. Reas.	Kick Plate Both Sides
C	3'-0" x 7'-0" x 1 3/8"	1'-0"	Flush - V Grooved - Fir	12x8" - 3-3/8" St. Reas.	Kick Plate Both Sides
D	2'-8" x 6'-8" x 1 3/8"	8"	O.G. Panel - Flat Panel Fir	8x8" - 3-3/8" St. Reas.	No Kick Plates
E	2'-8" x 6'-8" x 1 3/8"	8"	O.G. Panel - Flat Panel Fir	Same as D	No Kick Plates
F	2'-8" x 6'-8" x 1 3/8"	8"	O.G. Panel - Flat Panel Fir	Same as D	No Kick Plates
G	3'-0" x 7'-0" x 1 3/8"	8"	Flush - V Grooved - Fir	Same as D	Kick Plate Both Sides

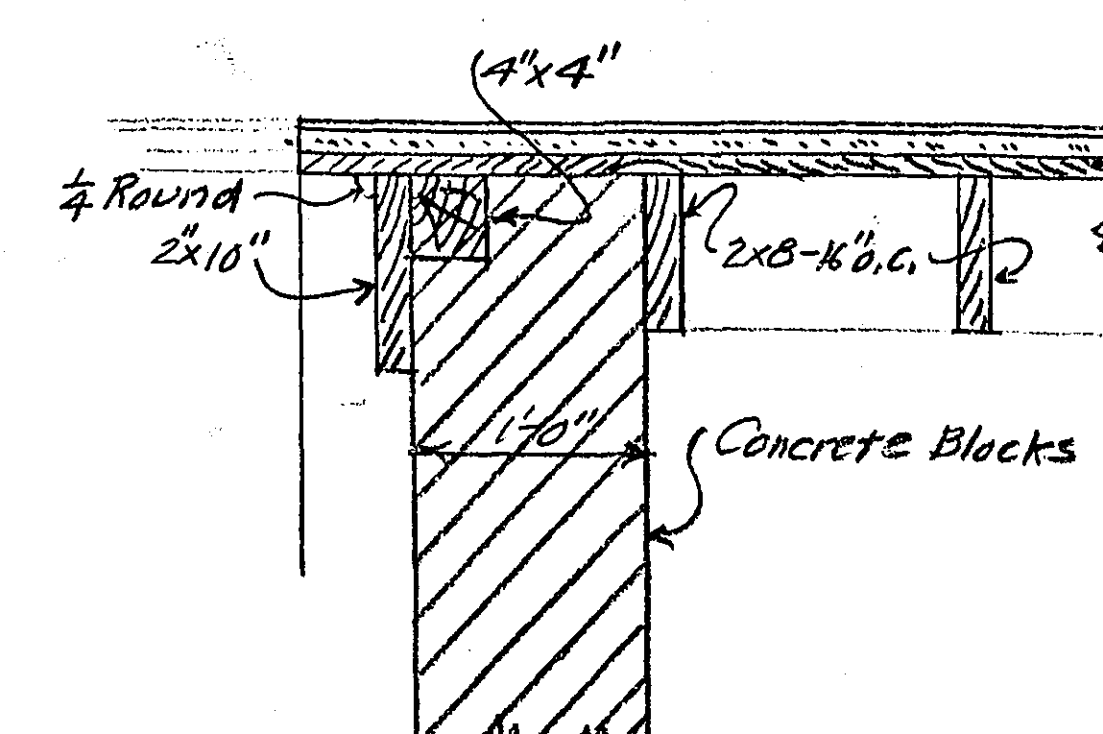
Note: All doors to be Stock Items as outlined above. They will be set in 2x6" plank frames as per detail on this sheet. All will be exterior type fir doors. Provide standard Steel Kick Plates on both sides of 4 doors noted in Door Schedule.

- Hardware - Doors A and C - 3-4x4" Dull Brass Button Tip Butt Hinges, B5-OBW 242 - F.O.K. Catalogue Page 2277.  
 1- Front Door Knob + Lock Set, B5-OBW 3225, Dull Brass Plated - F.O.K. Catalogue Page 2215.  
 Doors B and D - 3-4x4" Dull Brass Button Tip Butt Hinges, B5-OBW 242 - F.O.K. Catalogue Page 2277.  
 1- Inside Door Knob + Lock Set, B5-OBW 3225, Dull Brass Plated - F.O.K. Catalogue Page 2215.  
 Doors E, F and G - 3-3 1/2 x 3 1/2" Dull Brass Button Tip Butt Hinges, B5-OBW 242 - F.O.K. Catalogue Page 2277.  
 1- Inside Door Knob + Lock Set, B5-OBW 3225, Dull Brass Plated - F.O.K. Catalogue Page 2215.

Roof Construction: - 4 Plies of solid mopped pitch and gravel. (4 Plies of 15# felt) Felt will be applied to a 1" thickness of Insulite Board on 1x6" D.M. #2 Fir Roof Boards, these supported on 2x8-16" b.c. #1 Fir Roof Joists. Provide one (1) Row of 1x2" Cross Bridging on  $\frac{1}{2}$  of all Joist Spans.

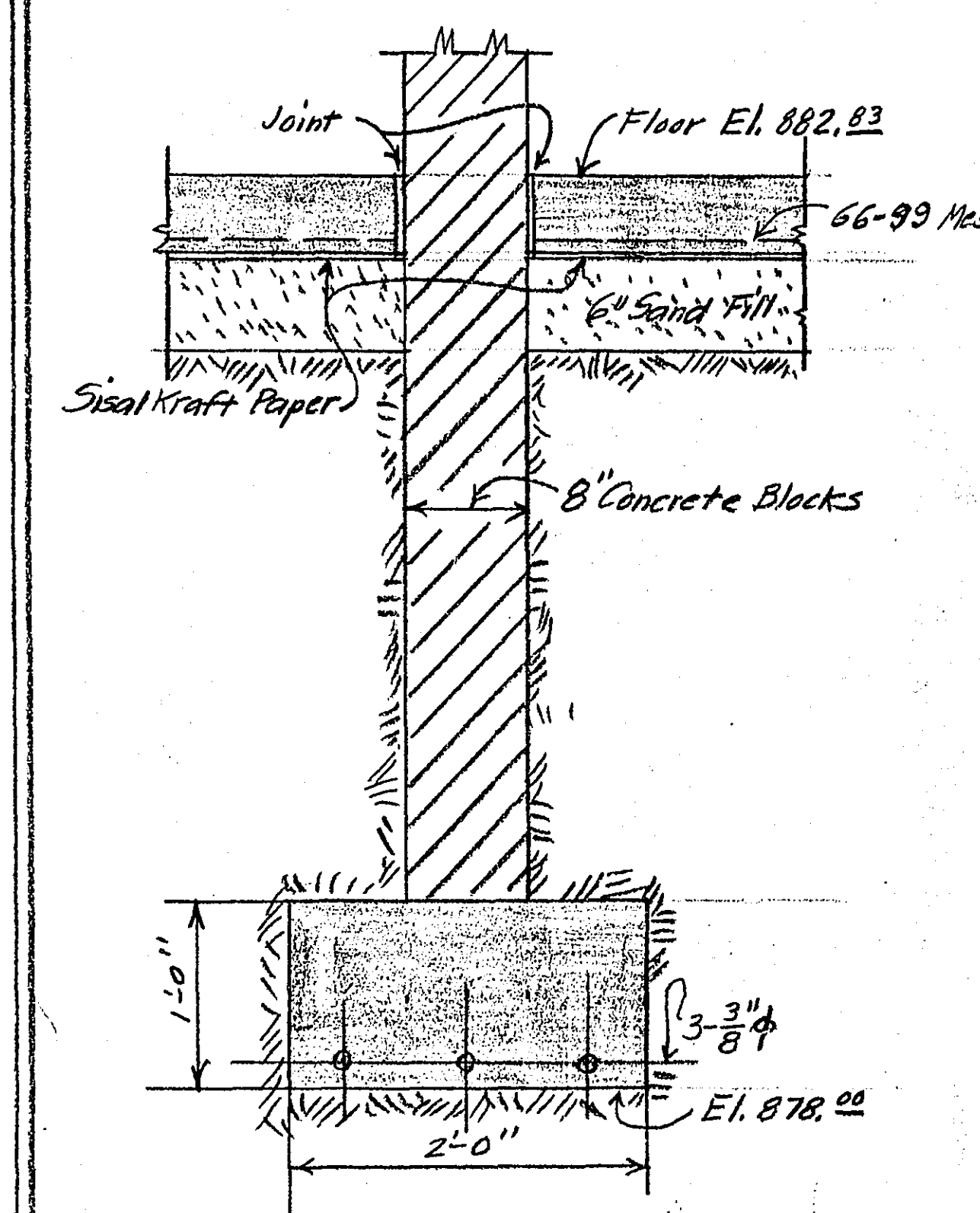


SECTION A-A (Sheet #1) SHOWING SIDEWALK, ROOF, STEEL BEAM, WALL AND OUTSIDE WALL FOOTING CONSTRUCTION - SCALE 1 1/2" = 1'-0"

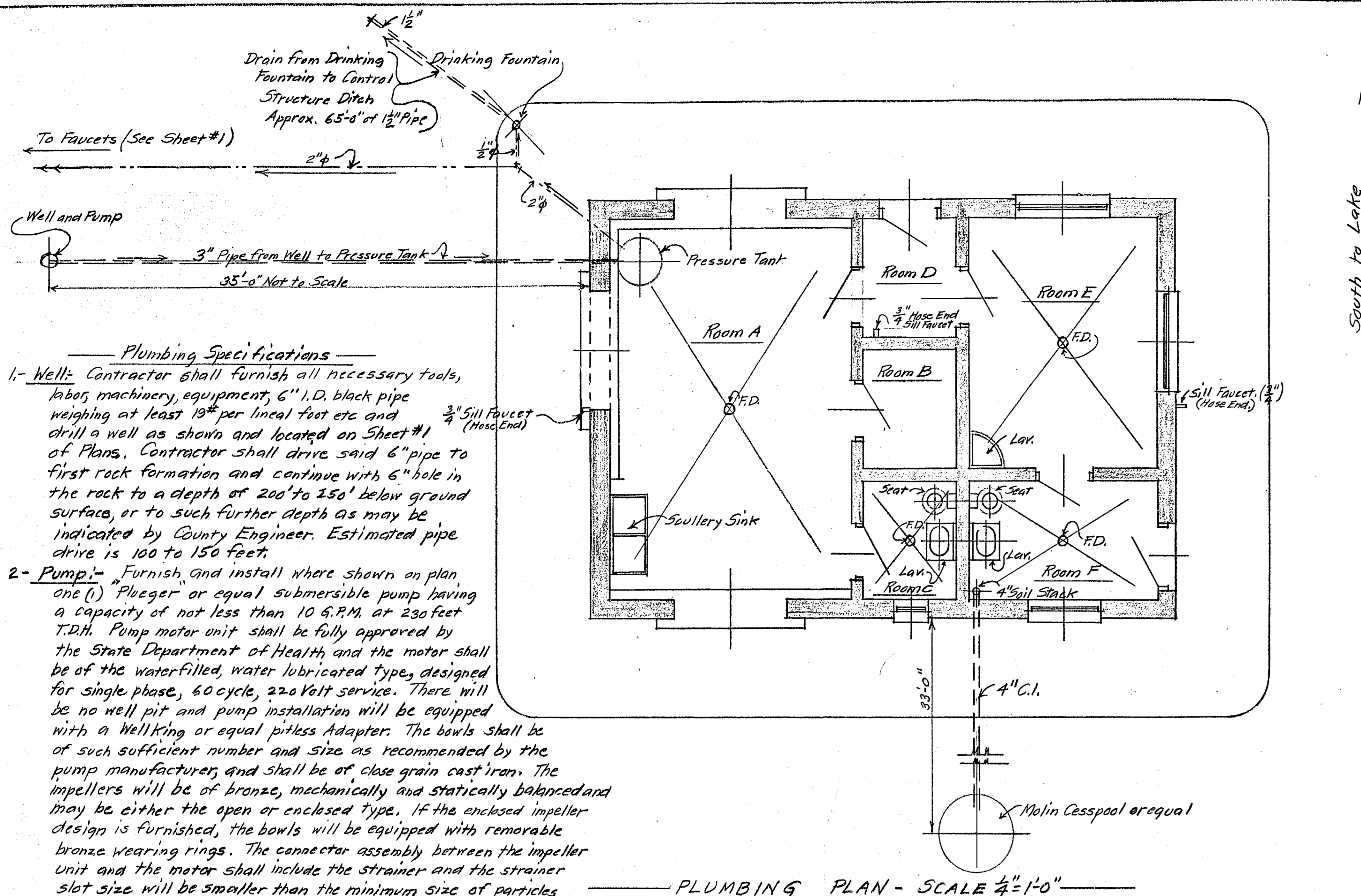


DETAIL OF EAVE CONSTRUCTION ON EAST AND WEST OUTSIDE WALLS - SCALE 1 1/2" = 1'-0"

Note: Sidewalk, Floor, Roof Construction and Outside Wall Footing Construction same as shown in Section A-A on this Sheet.



DETAIL OF INTERIOR WALL FOOTING CONSTRUCTION - SCALE 1 1/2" = 1'-0"



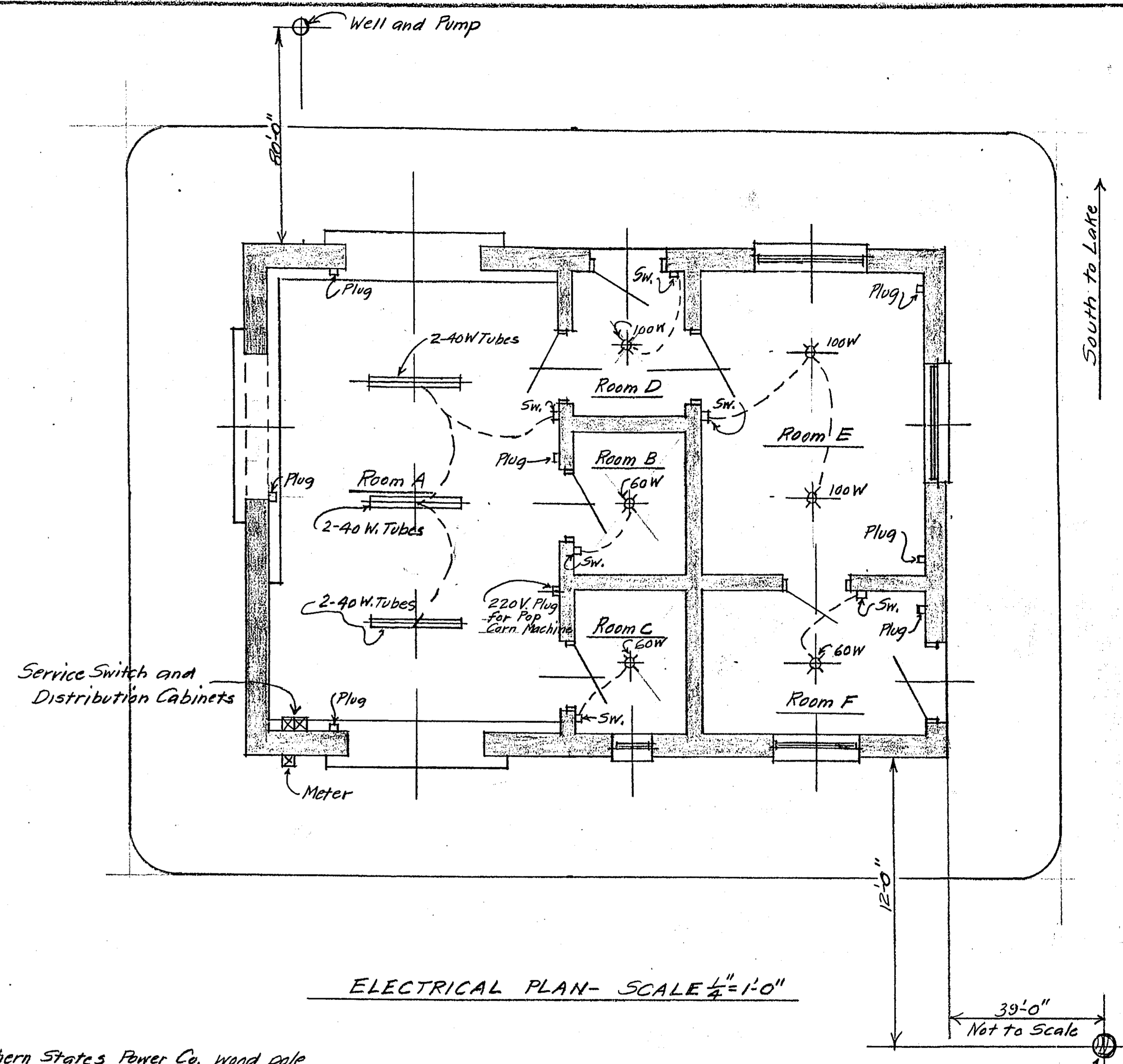
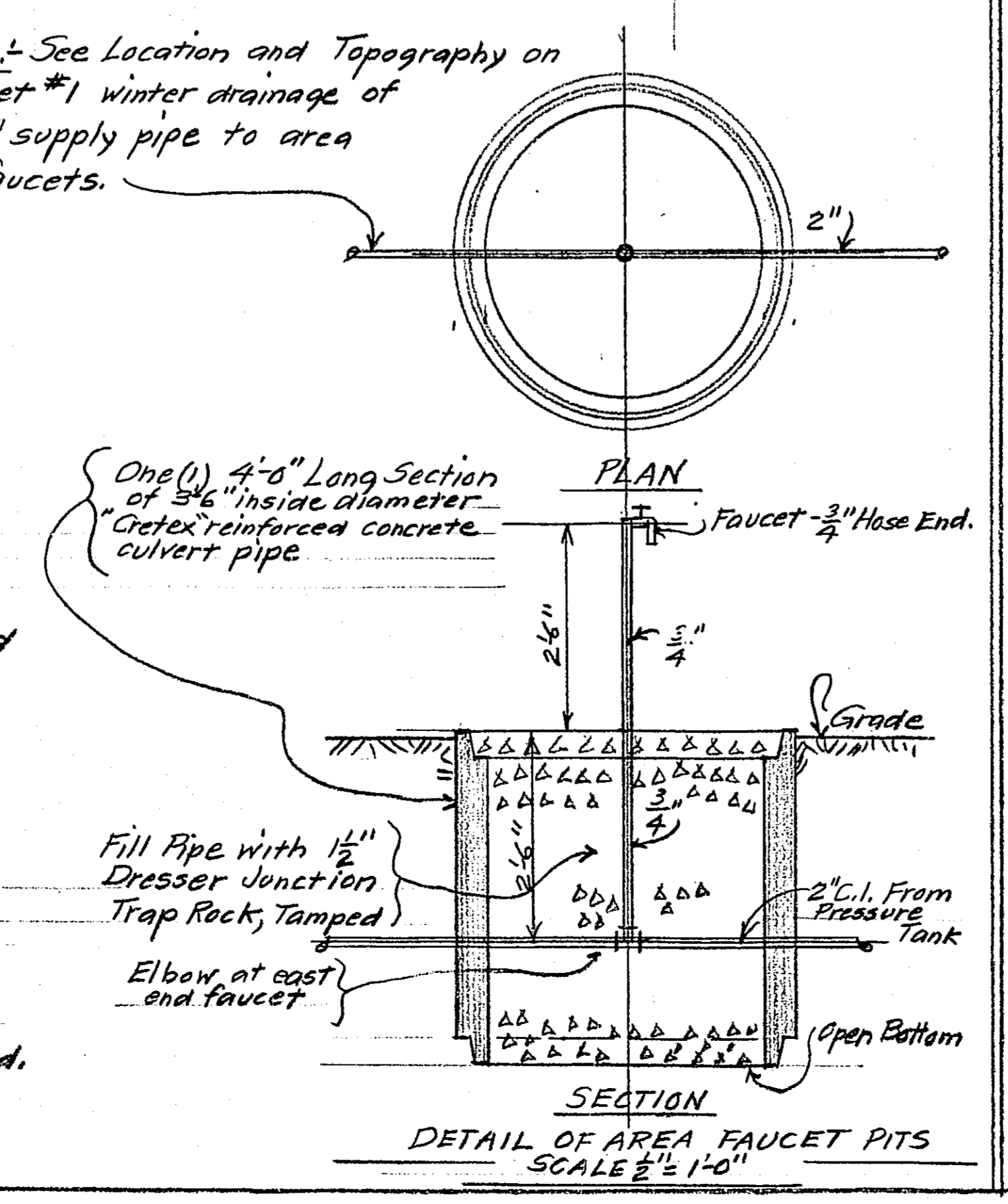
**Plumbing Specifications**

- Well:** Contractor shall furnish all necessary tools, labor, machinery, equipment, 6" I.D. black pipe weighing at least 13# per lineal foot etc and drill a well as shown and located on Sheet #1 of Plans. Contractor shall drive said 6" pipe to first rock formation and continue with 6" hole in the rock to a depth of 200' to 350' below ground surface, or to such further depth as may be indicated by County Engineer. Estimated pipe drive is 100 to 150 feet.
- Pump:** Furnish and install where shown on plan one (1) "Pleuger" or equal submersible pump having a capacity of not less than 10 G.P.M. at 230 feet T.D.H. Pump motor unit shall be fully approved by the State Department of Health and the motor shall be of the water-filled, water lubricated type, designed for single phase, 60 cycle, 220 Volt service. There will be no well pit and pump installation will be equipped with a wellking or equal pitless Adapter. The bowls shall be of such sufficient number and size as recommended by the pump manufacturer, and shall be of close grain cast iron. The impellers will be of bronze, mechanically and statically balanced and may be either the open or enclosed type. If the enclosed impeller design is furnished, the bowls will be equipped with removable bronze wearing rings. The connector assembly between the impeller unit and the motor shall include the strainer and the strainer slot size will be smaller than the minimum size of particles which can pass through the pump. The motor which drives the turbine pump shall be of the water-filled, water lubricated type, designed to meet the pump horse power requirements and motor shall not be overloaded under any condition of operation.
  - Underground Discharge Connection:** This shall be Well King or equal and the discharge connection will be at least 6'-0" below the ground surface.
  - Pump Column and Cable:** Contractor shall furnish and install, with the pump unit, sufficient 1 1/2" standard Tr-C pipe having a minimum wall thickness of .140 inch to set pump at 100 feet from ground surface and shall furnish and install necessary submarine type electrical cable for connecting pump motor to power supply. Cables may be terminated at conduit box at ground surface.
  - Pressure Tank:** See Plumbing Plan on this Sheet #4. Tank to be one having a capacity of 270 Gallons and have side cleaner access. It will be a standard unit for type of use desired.

**PLUMBING FIXTURE SCHEDULE**

Item	Quantity	Type	Notes
Area Faucets	3	Chicago Single Sink Faucet No. 7-344-633 with 1/2" Hose End Self Closing Alarm Handle	See Location + Topography on Sheet #1. See Detail on this Sheet #4.
Sill Faucets	3	Chicago #387-3/8" Hose End Removable Tee Handle	See locations on this Sheet #4.
Drinking Fountain	1	Halsey W. Taylor Co. No. 4520-68 Free Standing - 30" High - 1" Waste	See location on this Sheet #4.
Scullery Sink	1	Elkay Model LK-8298-2 Compartment - 12 Gauge Galvanized - Center Swing Faucet - Stepper with chain stay	Complete Room A.
Water Closets	2	American Standard Elongated Compact No. F2850-5 - Open Front Seat and Cover	Rooms C + F.
Wall Lavatories	2	American Standard "Perburst" No. F570 - One (1) Single Faucet Stepper with Chain Stay	Trap, Supply, Faucet, Stop etc Complete. Rooms C and F.
Corner Lavatory	1	American Standard (Aguil) No. F450 - One Single Faucet Stepper with Chain Stay	Room E Trap, Supply, Faucet, Stop etc Complete.
Floor Drains	4	"Blake" Y5-20 - Iron Top - For 2" Soil Pipe - Including Cover	Rooms A, C, D and F

- Alternate #1:** Contractor will quote an addition or deduction to or from his base bid based on the furnishing and installation of an Aurora submersible pump complete with a 110 Gallon, Dor-Mar submersible pressure tank as distributed by the Fadden Pump Co., 1551 University Ave., St. Paul, Minn. This is to be in lieu of the pump and tank specified in Par. 2 above. If Alternate #1 is adopted, the pressure tank shown on Plumbing Plan on this sheet #4 will be eliminated and water supply to all fixtures shown on plan or specified above will be direct. All specific provisions outlined in Par. 2 above will apply to Alternate #1.
- Area Faucets and Drinking Fountain:** See Location and Topography Plan on Sheet #1. Note that 3 Area Faucets are required on a single 2" line from pressure tank, faucets being 250' apart. At the proper time the exact locations will be determined on the ground by the County Engineer. See Detail on this Sheet #4 for Area Faucet Pits. Drinking Fountain will be located as shown at the S.E. Corner on the concrete walk with 3/4" supply pipe and 2" drain pipe running at an adequate slope to the ditch at the present central structure. Provide 2" drain to central structure ditch as shown on Sheet #1 to drain Area Faucet 2" line, pitching 2" line and drain adequately. All pipes to be black E. H. pipe running underground to a depth of at least 1'-6".
- Soil Stack and Cesspool:** Provide and install where shown one (1) standard Malin Cesspool with starting ring and 18 rings of interlocking blocks and 4 piece concrete cover, top of such cover being 2'-0" below ground surface. Cesspool to be 12'-0" deep with a capacity not less than 1000 Gallons. Soil Stack to be 4" diam. C.I. as well as the underground Soil line to cesspool.
- Piping for Supply to fixtures and drainage therefrom:** From Pressure Tank to all fixtures install supply water piping meeting all requirements of the Building Codes of the City of St. Paul or the Village of Arden Hills, whichever is the most rigid. Pipe sizes shall be adequate for fixtures involved and will be installed in the concrete floor as much as possible, however in Rooms C, E, and F they may be hung on walls in an exposed position if necessary. Drain piping from Scullery Sink and 4 floor drains will be 2" pipe running to Soil Stack in concrete floor and drain piping from water closets and lavatories to soil stack will be of standard size for the purpose intended. All fixtures will be trapped and vented. Arrange entire system to drain, as building will not be in use during cold weather. There will not be any hot water. Completely test for leaks before allowing piping to be covered in. Note that there are 3 Sill Faucets, with 3/8" Hose Ends.
- Fixtures:** Furnish and install all fixtures as indicated in Fixture Schedule on this Sheet #4.
- Note:** There will be no heat.
- Additional Note re Area Faucets:** Note that in Par. 4 above, the exact locations of Area Faucets will be determined by the County Engineer. Contractor will submit his base bid based on the layout shown on Sheet #1. He will then, in addition, indicate a price per foot of the 2" supply pipe to these faucets, which will be used as a credit to the County if the final length of the supply pipe come out shorter than indicated on Sheet #1, or as an extra to the Contractor if this length comes out longer than so indicated.



**Electrical Specifications**

- Pole:** Note that there is now located on the site a Northern States Power Co. wood pole about 40'-0" from the N.W. corner of this proposed building, which pole supports a street light bracket and electric wiring for current supply to the district. This will be the source of current requirements to the proposed building.
- Meter, Service Switch and Distribution Cabinet:** Service will be brought to Building from Pole and Meter will be installed on Outside with Service Switch and Distribution Cabinet on Inside where shown, all in conformity to regulations of the Northern States Power Co. with which organization Contractor will make all arrangements.
- Fixtures requiring Current:** See Electrical Plan on this Sheet #4. Fixtures consist of lighting units shown, base plugs shown and Well Pump for which see Plumbing Specifications on this Sheet #4. Note that one base plug will require 220 Volt service as well as the well pump motor, whereas all other units require 110 Volt service, and wire size will be adjusted accordingly.
- Wiring:** Furnish and install all necessary wiring, installed in thin wall conduit, required for service to all fixtures. Conduit may be supported on bottom of ceiling joists or on walls and be exposed. Provide all boxes necessary and comply with all provisions of the Building Codes of the Village of Arden Hills or the City of St. Paul, whichever is the most rigid. Wire sizes will conform to requirements of these agencies and be ample for the loads imposed.
- Fixtures:** See Electrical Fixture Schedule below. Virden or equal.
- Plugs:** These to be Rodale or equal duplex receptacles mounted 1'-6" above floor. To handle load required. Twist lock - 2 Wires - Bakelite. Complete with Boxes and all accessories. Note heavy outlet at Pop Corn Machine.
- Switches:** These to be Single Pole Plastic, Surface Type Toggle Switches completely equipped with Boxes, plates etc ready for operation.

**VIRDEN FIXTURE SCHEDULE**

Room	Number of Fixtures	Fixture Type	Mounting
A	3	Virden Fixture No. V-10224 with 2-40 Watt Fluorescent Tubes. Industrial Units - 3 on 1 Switch. - Complete with Tubes, Instant Starters Ready to Operate.	Mount Fixtures on a 1x8 #1 Fir Board nailed to bottom of Ceiling Joists.
B	1	Virden Fixture No. V-1102 - Chroma - Complete with 1-60 Watt Lamp	"
C	1	Same as Room B	"
D	1	Virden Fixture No. V-1112 - Chroma - Complete with 1-100 Watt Lamp	"
E	2	Same as Room D	"
F	1	Same as Room B	"