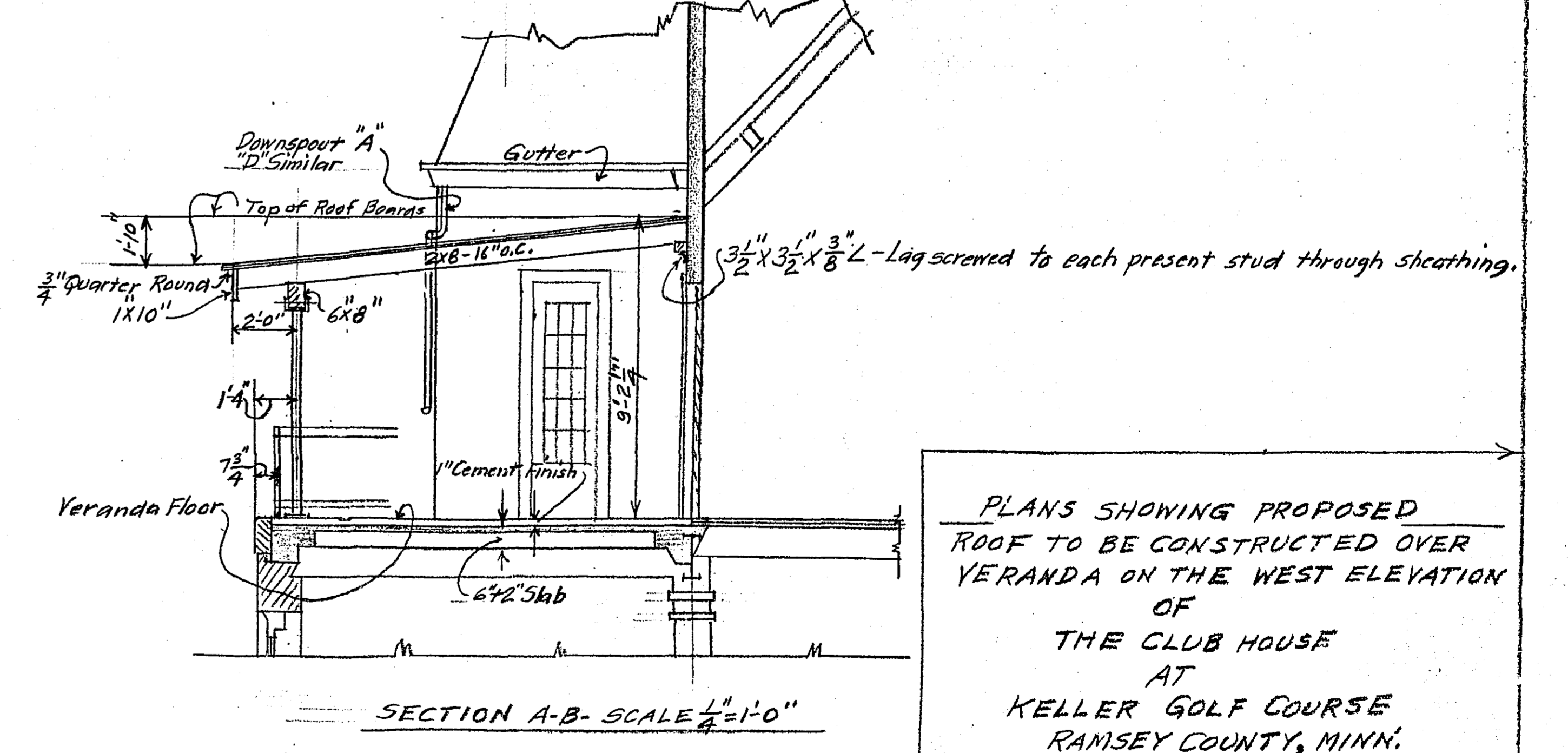
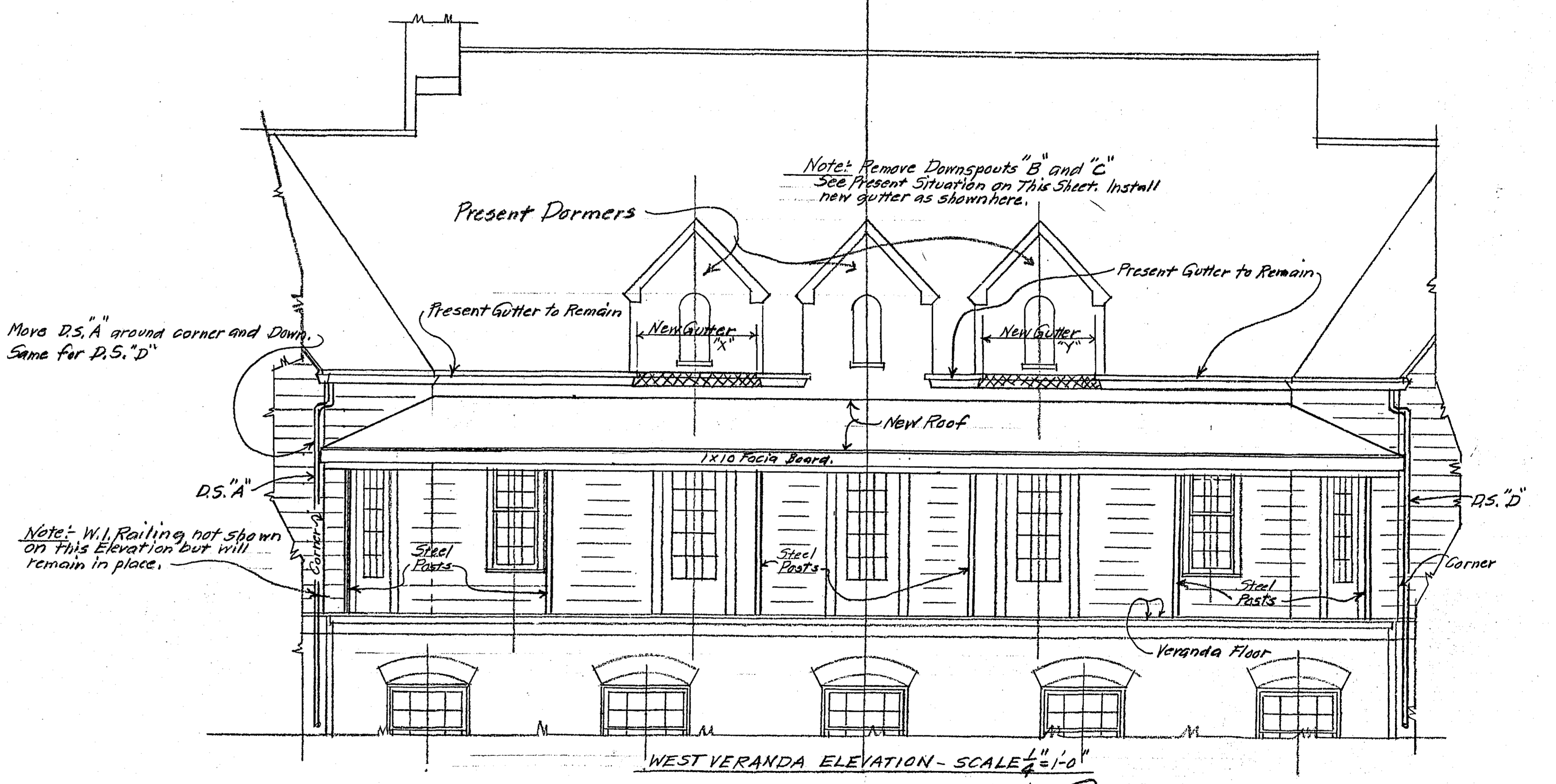
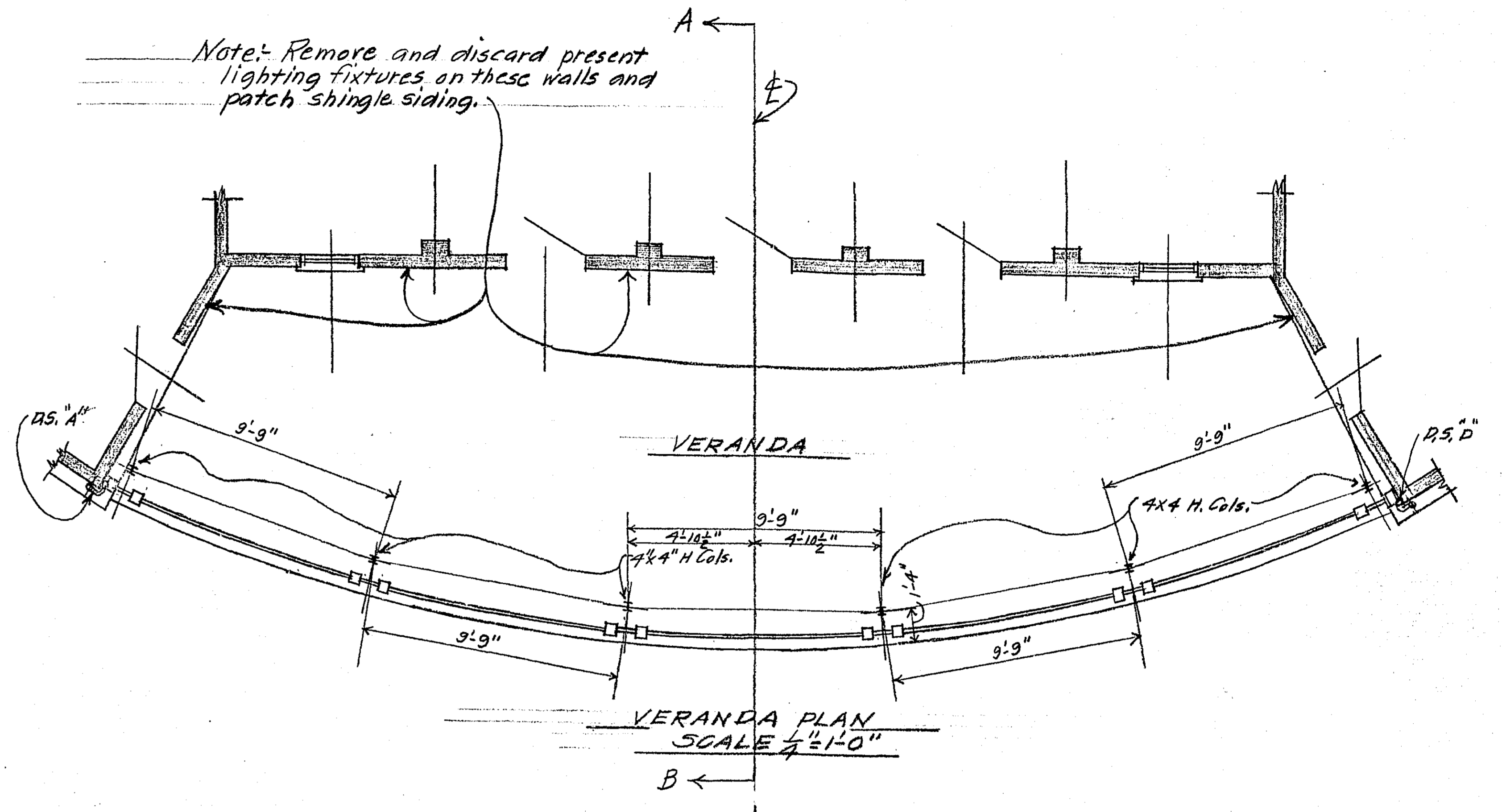


Note: This portion of Sheet #1 shows present situation



Note: This portion of Sheet #1 shows new Roof to be constructed over Veranda (See Also Sheet #2)

PLANS SHOWING PROPOSED ROOF TO BE CONSTRUCTED OVER VERANDA ON THE WEST ELEVATION OF THE CLUB HOUSE AT KELLER GOLF COURSE RAMSEY COUNTY, MINN. JAN. 1958  
OFFICE OF COUNTY ENGINEER  
RARRY W. BURNHAM  
County Engineer, Del.

Flashing

