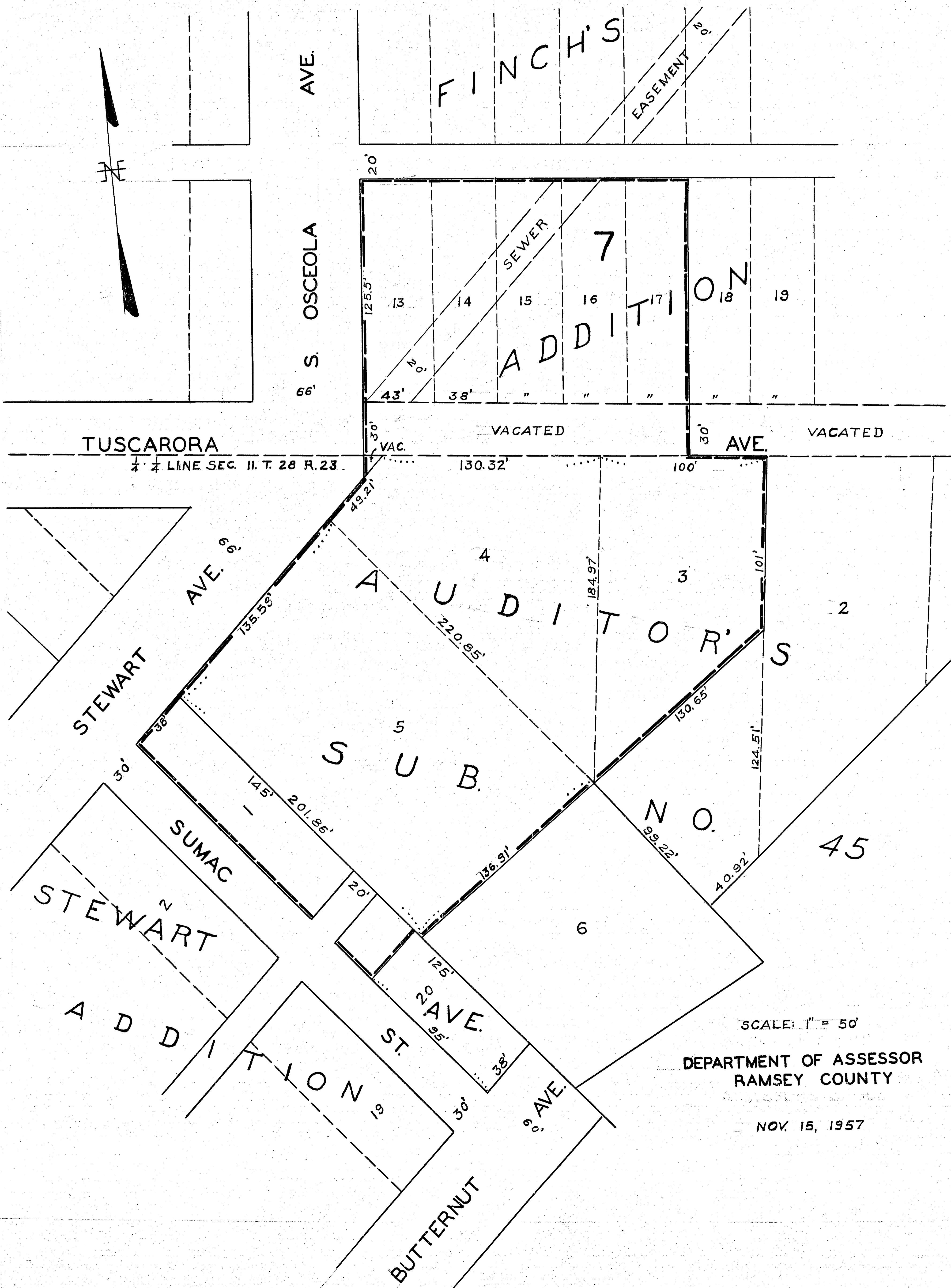
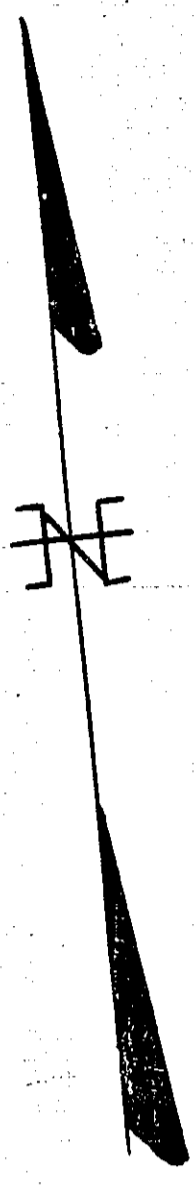


RAMSEY COUNTY HOME SCHOOL FOR GIRLS



TUSCARORA

1/4 LINE SEC. 11, T. 28 R. 23

FINCH'S

EASEMENT

AVE.

S. OSCEOLA

SEWER

7

ADDITION

VACATED

AVE.

VACATED

STEWART AVE. 66'

AUDITOR'S

SUB.

NO.

45

STEWART

ADDITION

BUTTERNUT

SCALE: 1" = 50'

DEPARTMENT OF ASSESSOR
RAMSEY COUNTY

NOV. 15, 1957