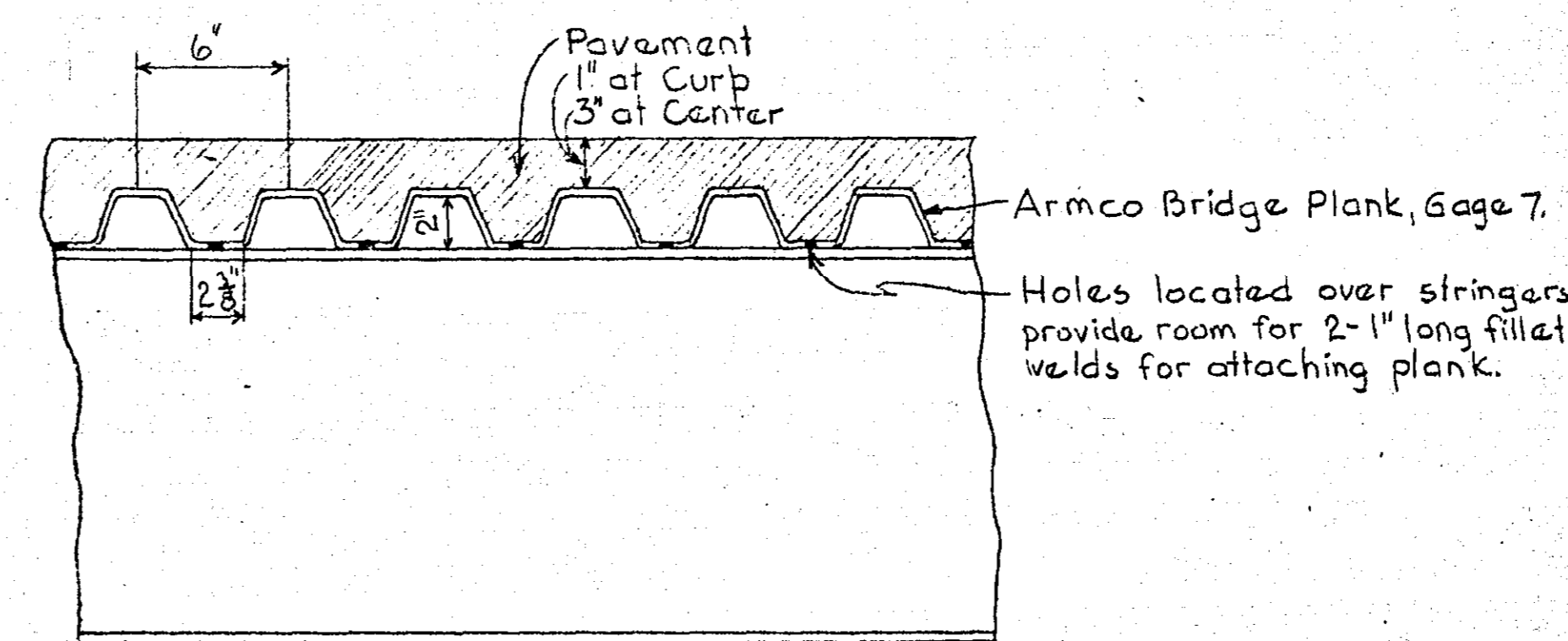
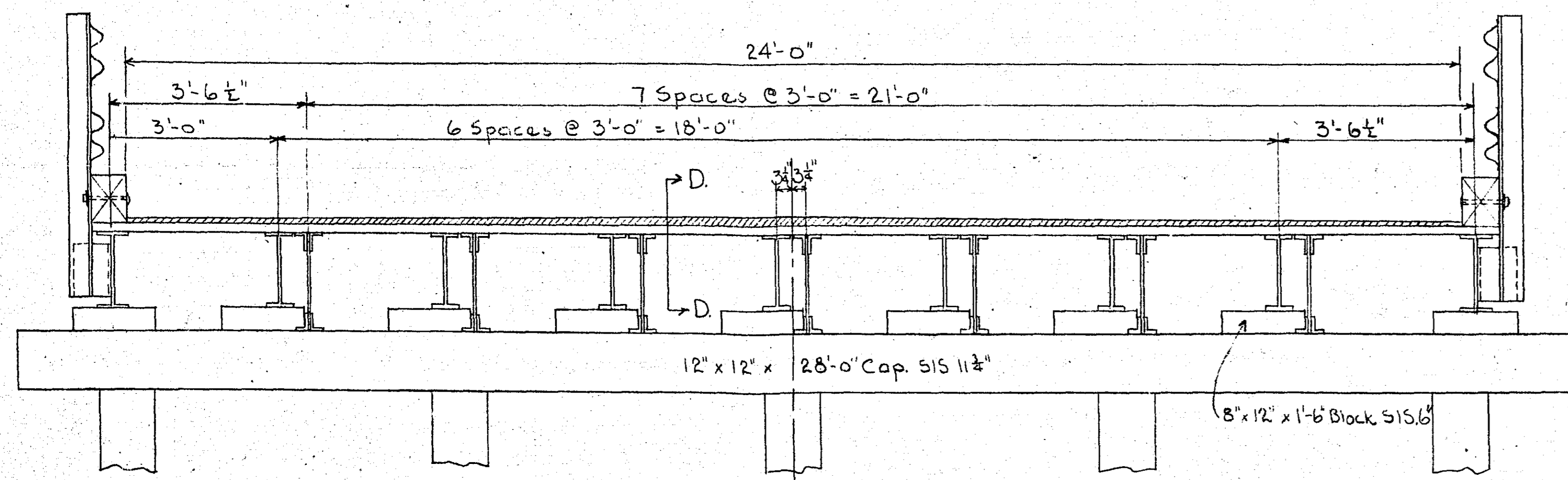
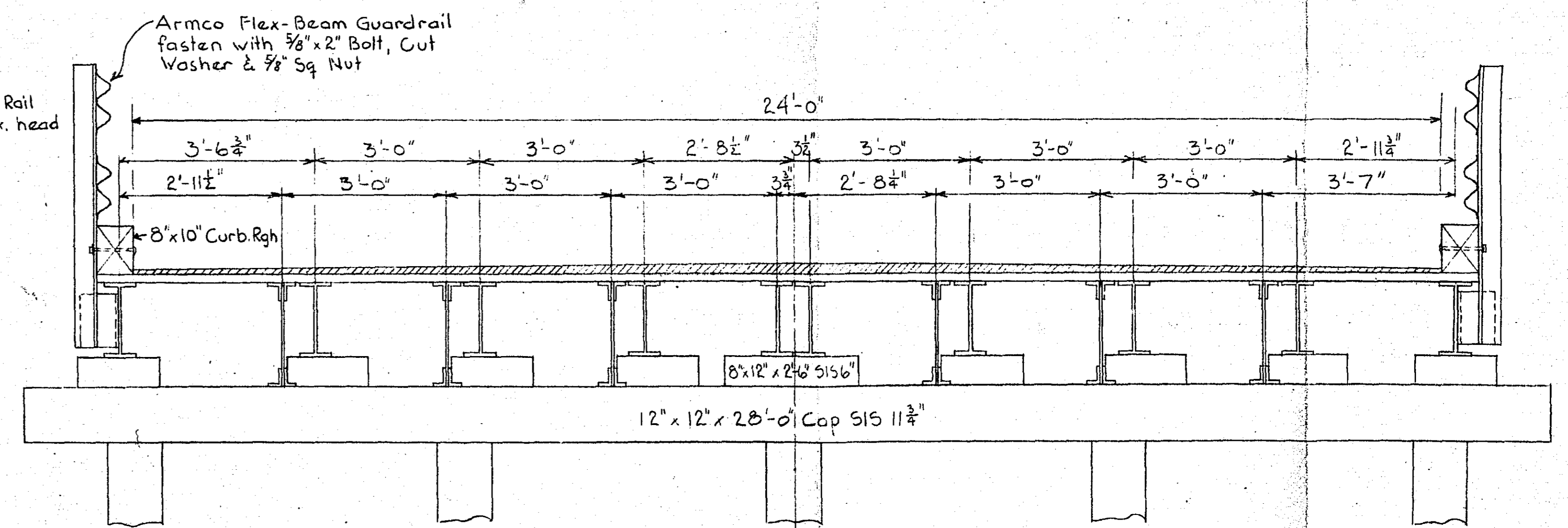
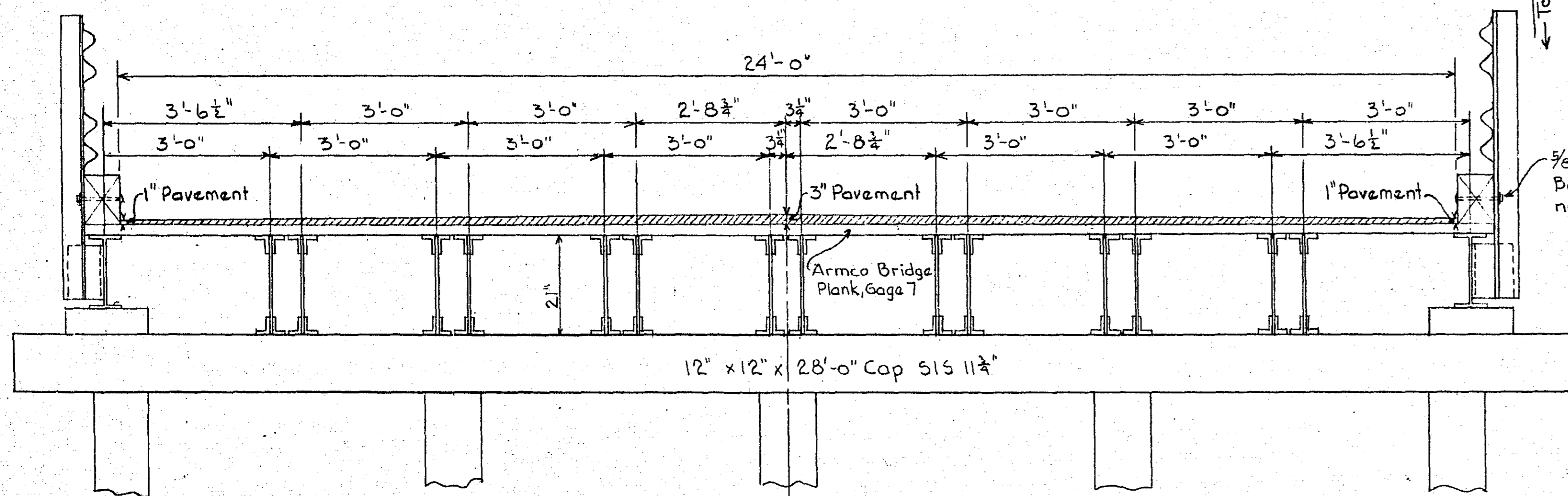


DUMP PLANKS.
 5-6" x 12" x 26'-0"
 8-3" x 10" x 5'-0"
 8-3" x 10" x 14'-0"
 2-4" x 8" x 10'-0" Posts



Weight of steel to be reused: 25,030 #
 " " " " added: 26,600 #

	Drawing	Revision
Del.	RA 10-18-55	
Tr.		
Chk.		
Quant		
Qu. Chk.		
App.		

BRIDGE ST. P. 14.17
 COUNTY ROAD "C" OVERHEAD.
 ST. PAUL, MINN.
 GENERAL PLAN.
 M. ST. P. & S. STE. M. R. R. Co.
 MPLS. & DUL. DIV.-ST. PAUL BRANCH.
 OFFICE OF CHIEF ENGINEER, MINNEAPOLIS, MINN.
 SCALE AS SHOWN, OCT 18-1955.

Sheet #1 of 2 sheets

PLAN 28371
 FILE T-19-51

R-749/17

