

TRIM 7

OFFICE OF
RAMSEY COUNTY ENGINEER
HARRY S. BRONSON
MAP OF
JOY PROPERTY
AT
SILVER LAKE
IN
SECTION 1, T-29N, R-22W.
APR. 1, 1954 SCALE 1" = 100'

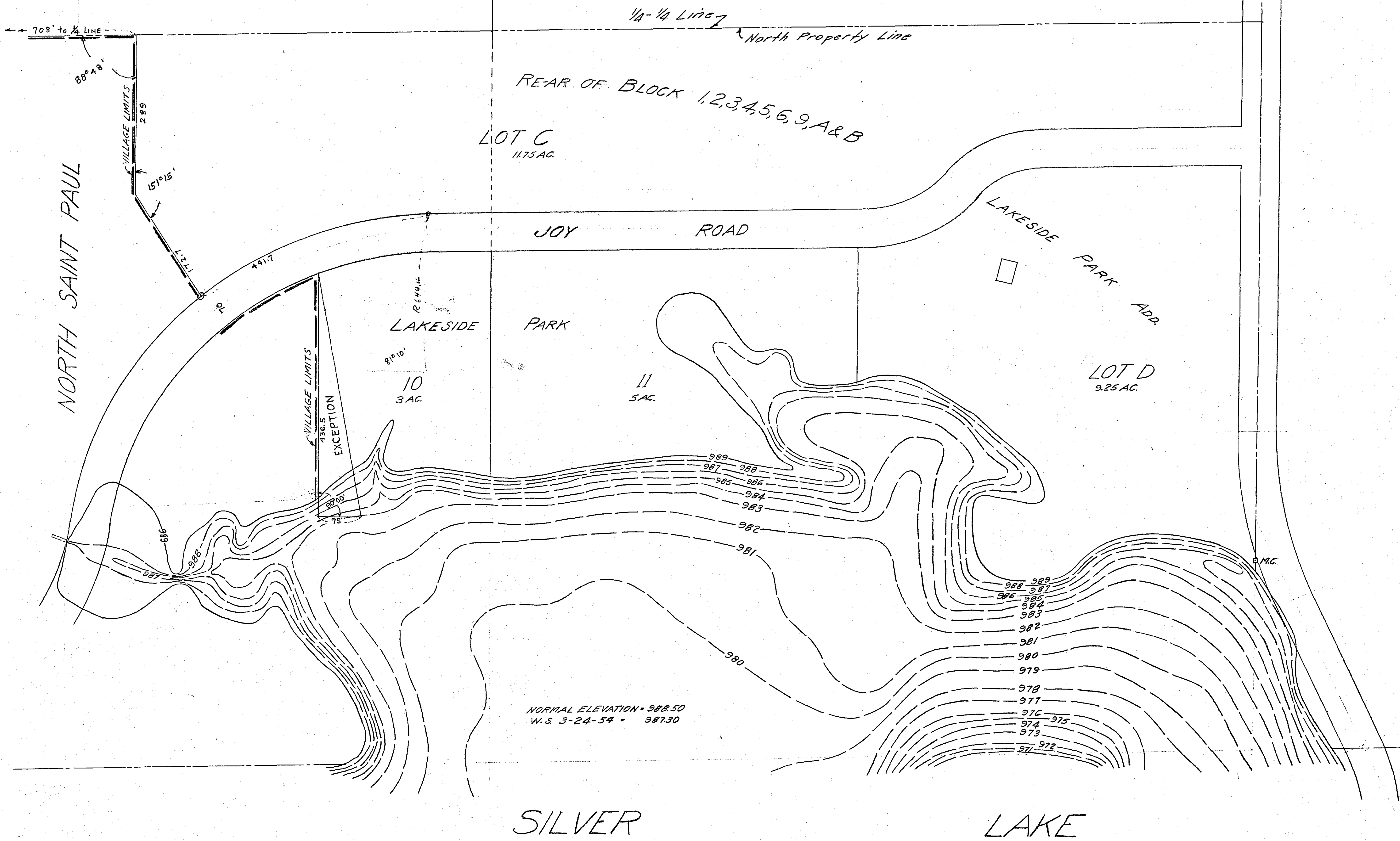
COUNTY ROAD "D"

N.E. COR. SECT

NE 1/4 OF NE 1/4
42.6 AC.

T.H. 100

TRIM 5



NORMAL ELEVATION = 988.50
W.S. 3-24-54 = 987.30

SILVER

LAKE

TRIM 5

R 739