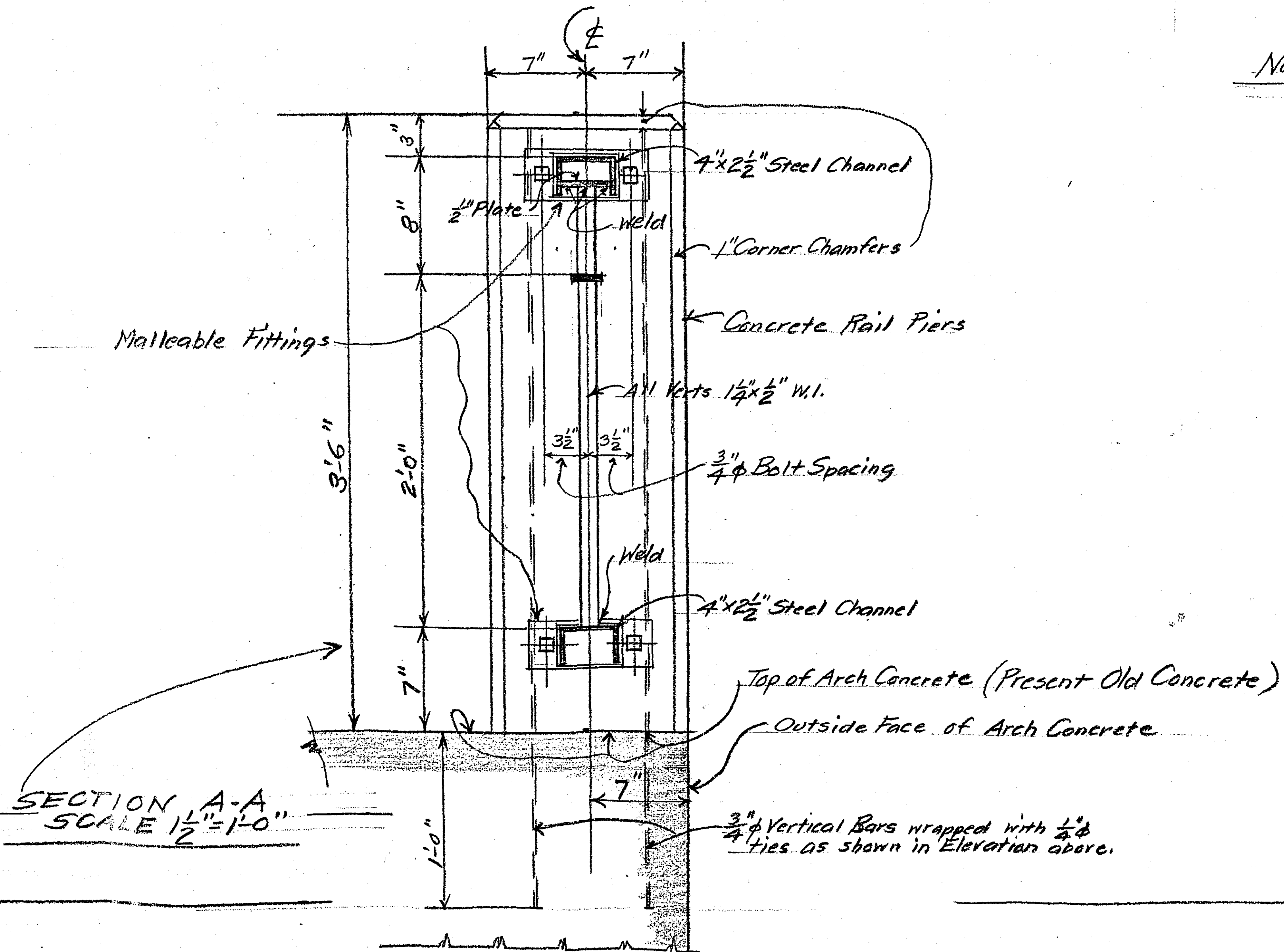


Note: Build two (2) railings as per this plan.

PLAN, ELEVATION AND DETAILS COVERING
 PROPOSED NEW BRIDGE RAILINGS
 ON
 PRESENT BRIDGE SPANNING CANAL
 BETWEEN KELLER AND GERVAIS LAKES
 RAMSEY COUNTY, MINN.
 SCALES NOTED - APRIL 29, 1954
 Barry S. Bronson
 HARRIS BRONSON
 COUNTY ENGINEER



I HEREBY CERTIFY THAT THIS PLAN WAS PREPARED BY ME OR UNDER MY DIRECT SUPERVISION AND THAT I AM A FULLY REGISTERED PROFESSIONAL ENGINEER UNDER THE LAWS OF THE STATE OF MINNESOTA.
 Barry S. Bronson
 4/29/54 818