

Sill Height = 5'-5"
 Sill to Head = 4'-4"
 Plaster opening width = 4'-2"
 Double Hung Sash - 2Lts 40/20"

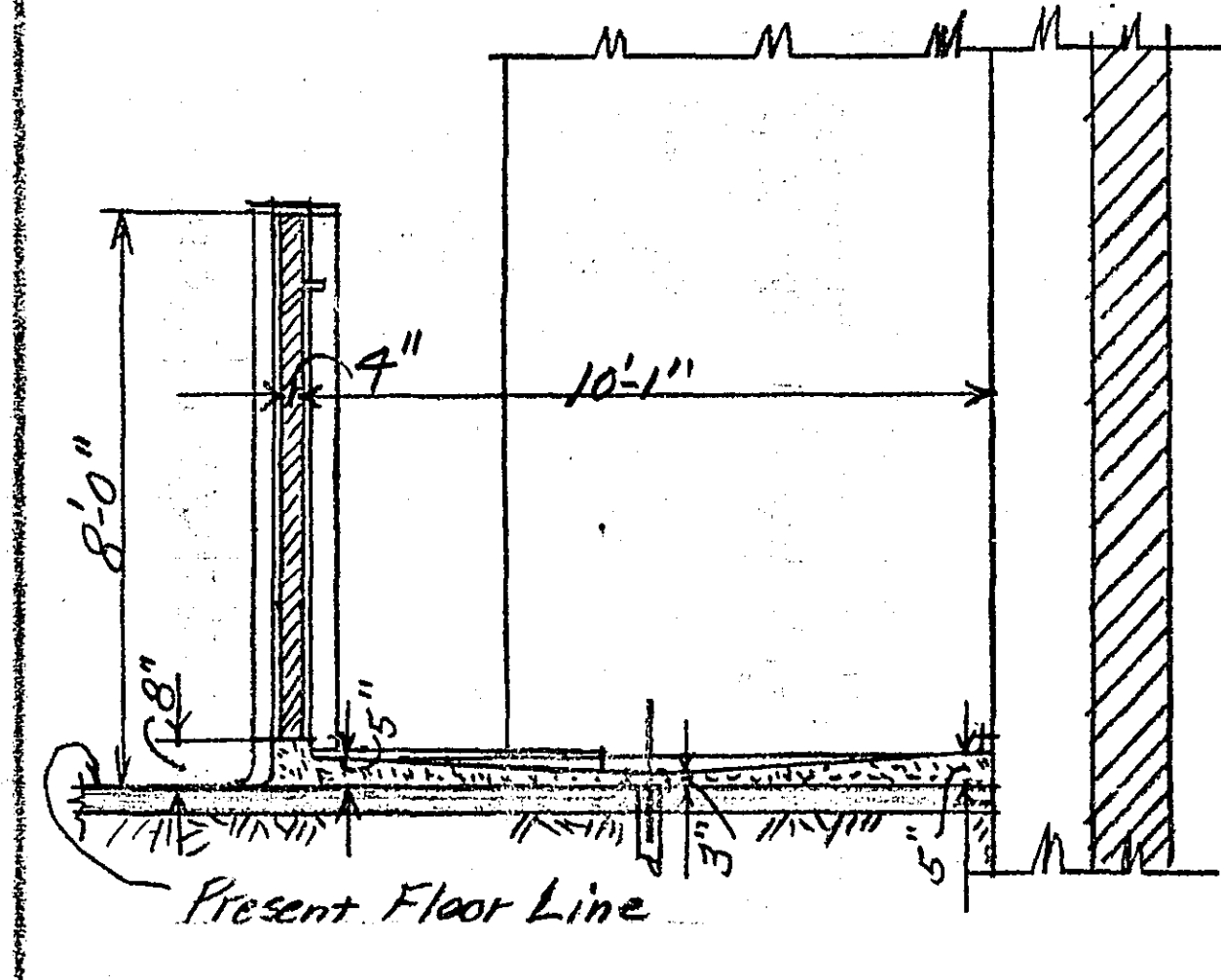
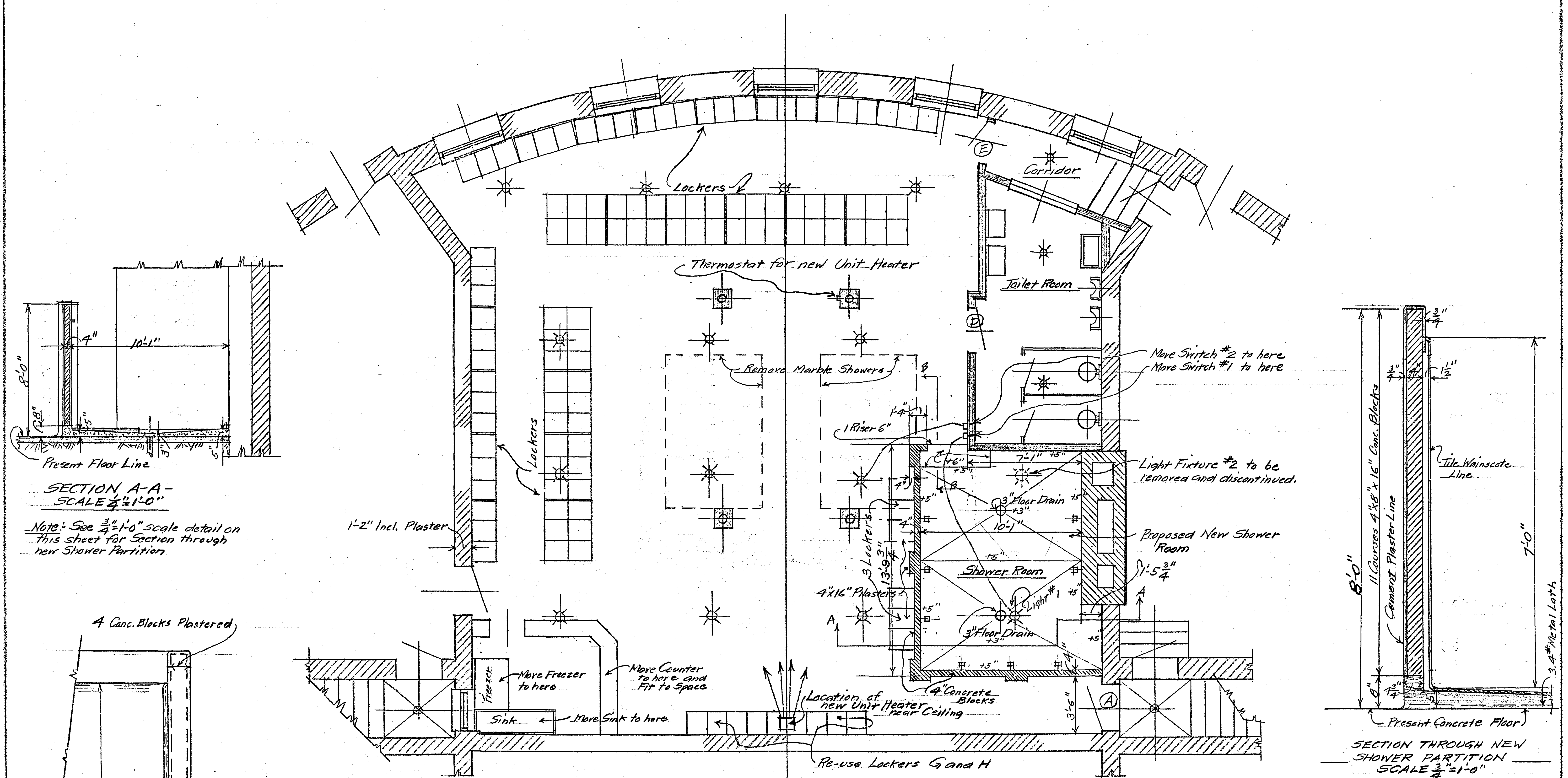
Sill Height = 4'-2"
 Sill to Head = 5'-8"
 Plaster opening width = 2'-6"
 Double Hung Sash - 2Lts. 20/28"

Present Steel Lockers				
Lockers	Number	Width	Depth	Height
A	28	1'-0"	1'-3"	5'-6"
B	38	1'-0"	1'-3"	5'-6"
C	5	1'-0"	1'-3"	6'-1 1/2"
D	9	1'-0"	1'-3"	5'-6"
E	28	1'-0"	1'-3"	5'-6"
F	17	1'-0"	1'-3"	5'-6"
G	8	1'-6"	2'-0"	6'-6"
H	1	1'-6"	2'-0"	6'-6"

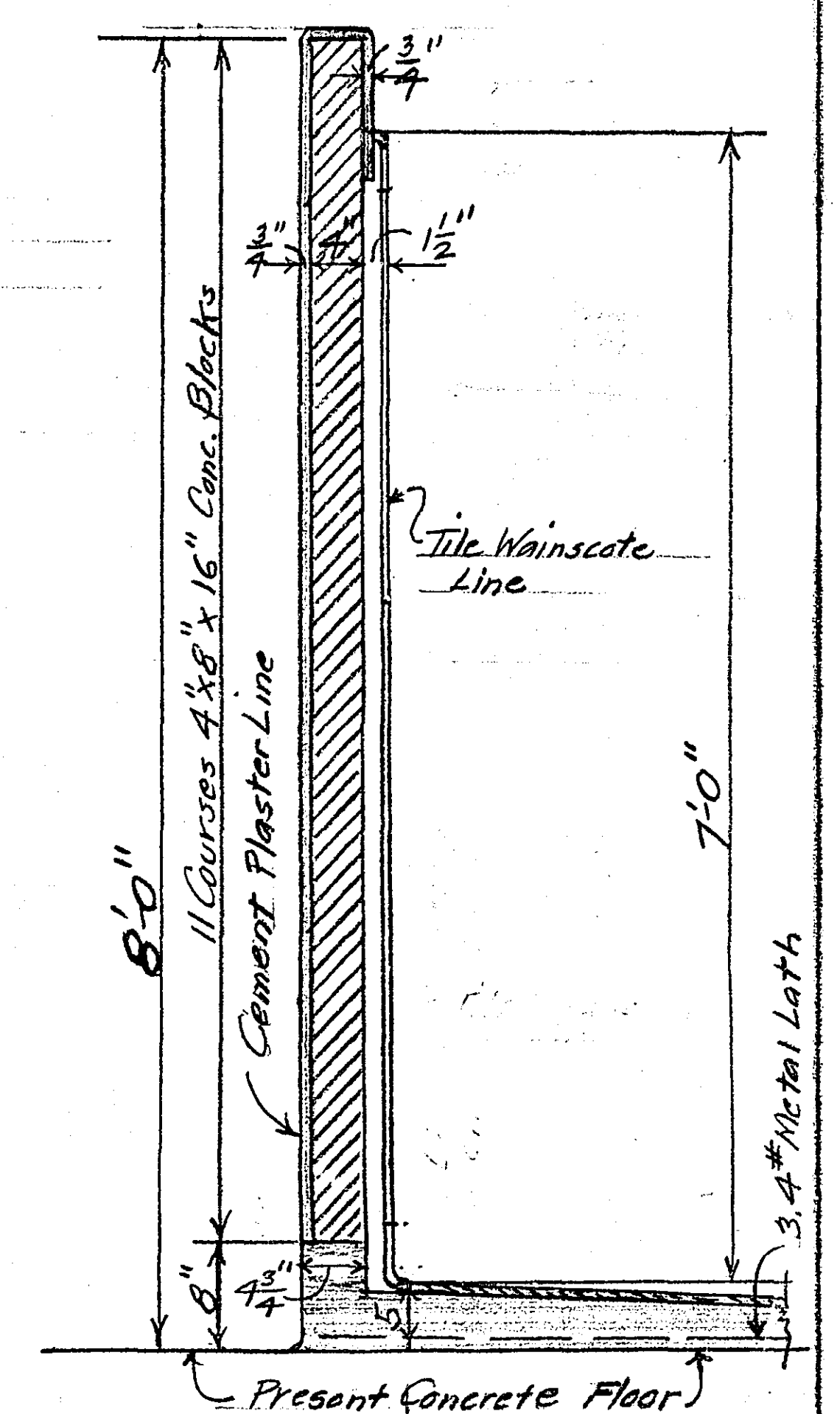
Note:- 120 Steel Lockers 1'-0" Wide X 1'-3" Deep X 5'-6" High.
 5 " " " 1'-0" " X 1'-3" " X 6'-1 1/2" "
 9 " " " 1'-6" " X 2'-0" " X 6'-6" "

PLAN OF MEN'S LOCKER ROOM IN CLUB HOUSE AT
 KELLER GOLF COURSE
 AS OF JULY 21, 1953
 H. S. BRONSON, COUNTY ENGINEER - SCALE 1/4" = 1'-0"

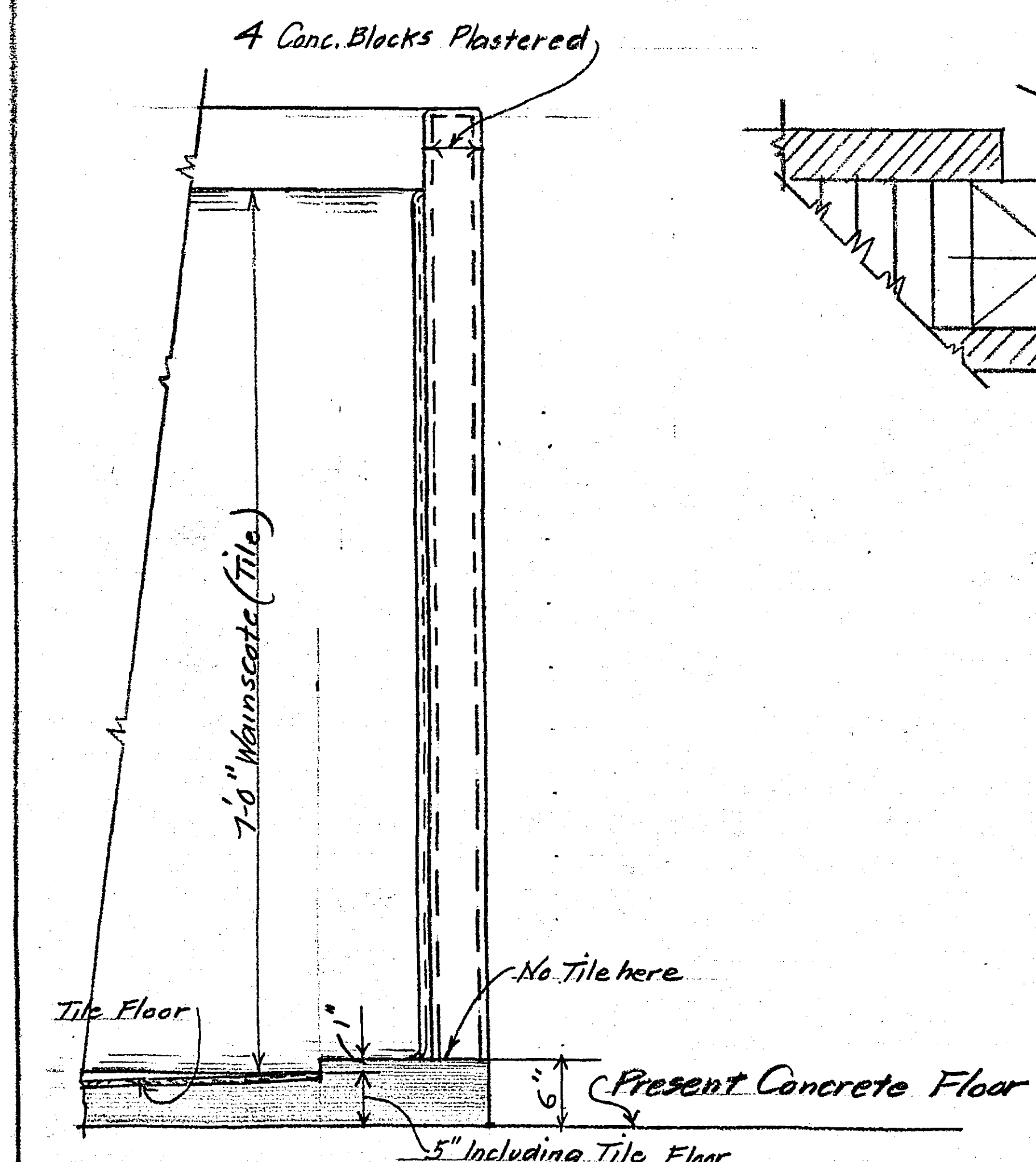
15x18x5'6" and 6" high



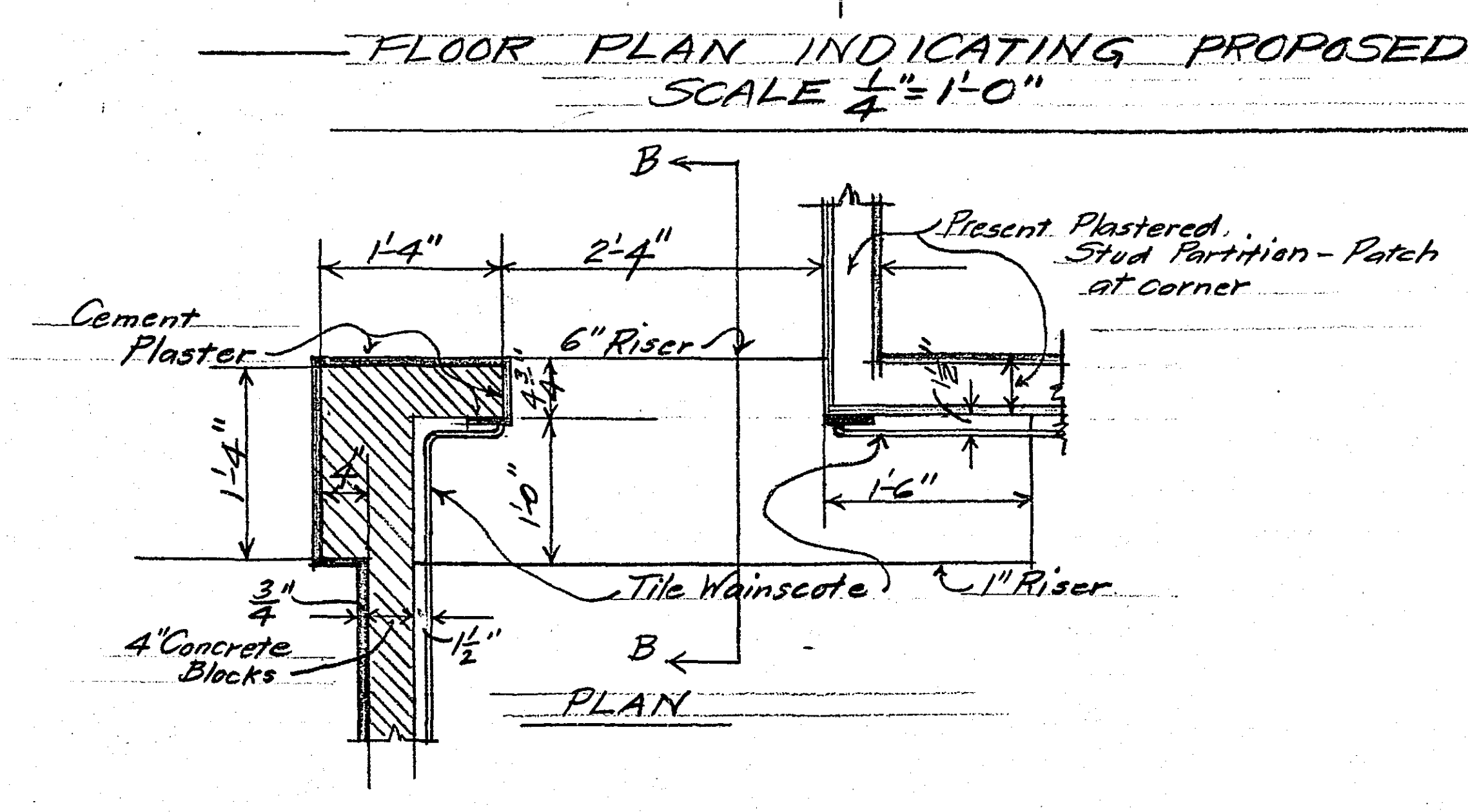
SECTION A-A
SCALE 3/4" = 1'-0"
NOTE: See 3/4" = 1'-0" scale detail on this sheet for Section through new Shower Partition



SECTION THROUGH NEW SHOWER PARTITION
SCALE 3/4" = 1'-0"



SECTION B-B



DETAILS SHOWING ENTRANCE TO SHOWER ROOM - SCALE 3/4" = 1'-0"

PLAN OF MEN'S LOCKER ROOM IN CLUB HOUSE AT KELLER GOLF COURSE INDICATING WORK TO BE DONE
H. S. BRONSON, COUNTY ENGINEER
SCALE 1/4" = 1'-0" except noted.
JULY 21, 1953