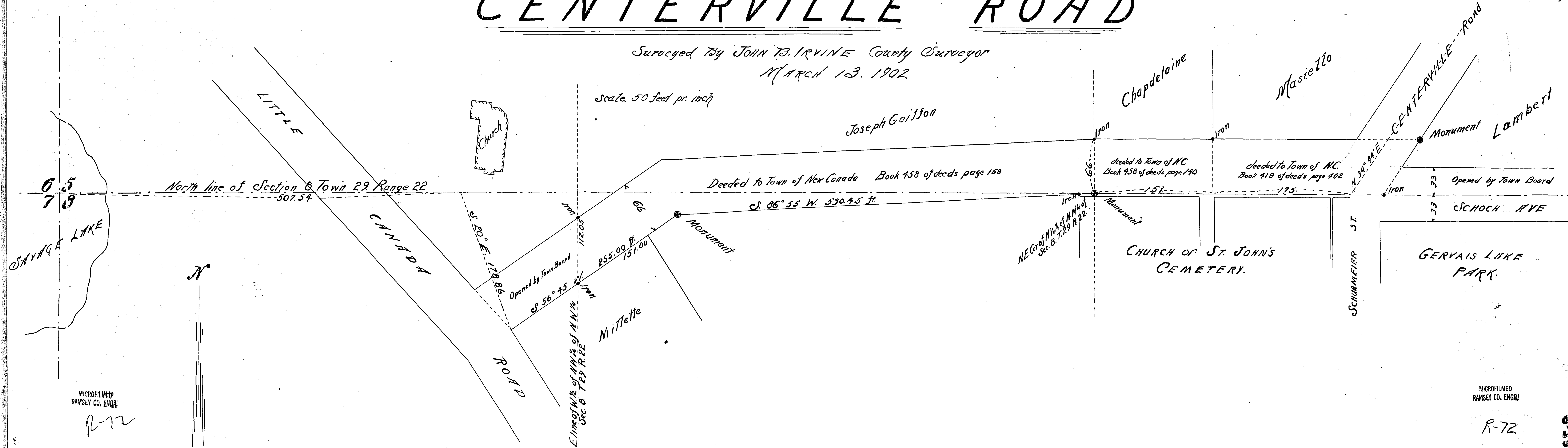


CENTERVILLE ROAD

Surveyed By JOHN B. IRVINE County Surveyor
MARCH 13, 1902

Scale 50 feet pr. inch

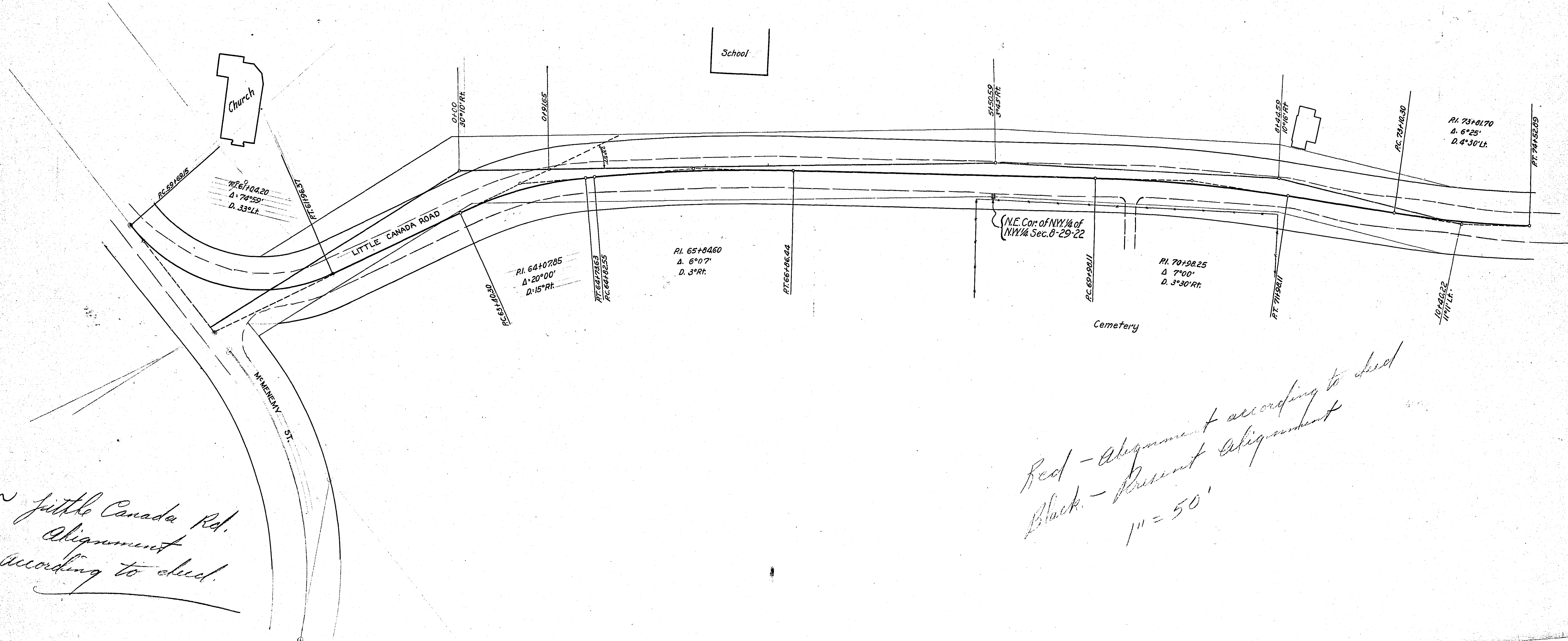


MICROFILMED
RAMSEY CO. ENGR.

R-72

MICROFILMED
RAMSEY CO. ENGR.

R-72



MICROFILMED
RAMSEY CO. ENGR.

*Little Canada Rd.
Alignment
according to deed.*

*Red - Alignment according to deed
Black - Present Alignment
1" = 50'*

MICROFILMED
RAMSEY CO. ENGR.

R-72