

Map dated
Nov 4-1889
C.C.R.O.

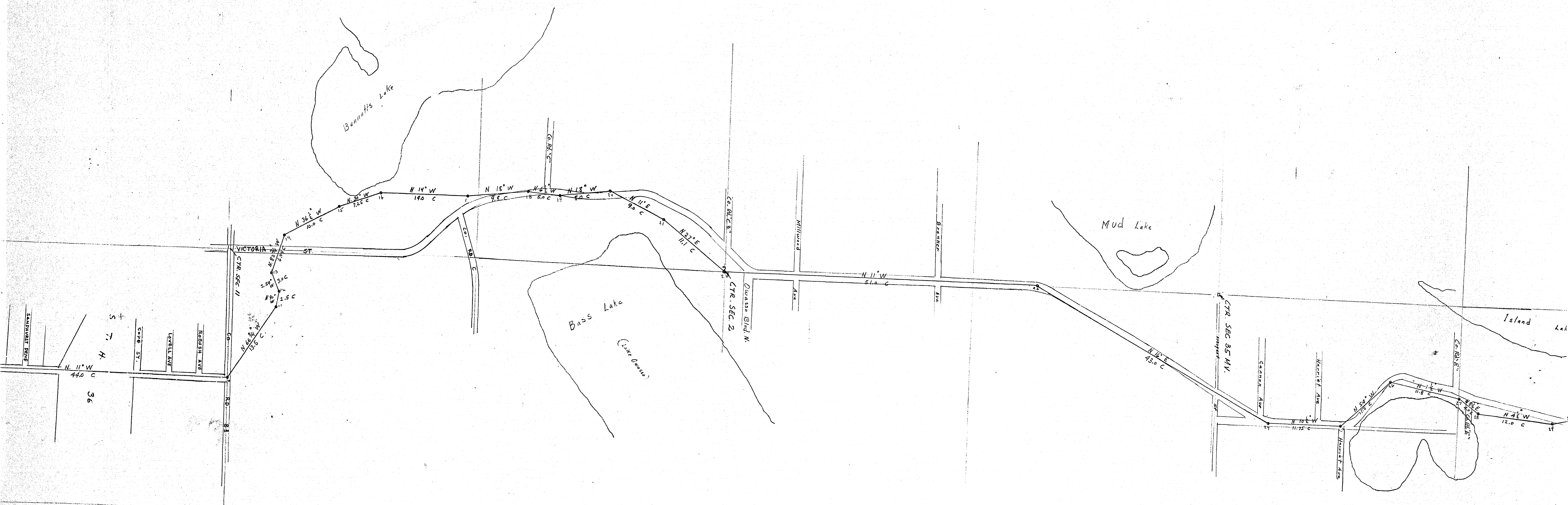
ST. PAUL & BASS LAKE RD.
 Red line taken from Road Plat
 Book No 31 (Register of Deeds)
 Pages 6-7-8 & 9
 Streets shown superimposed from
 Ramsey County Atlas

Scale 1" = 400'
 N

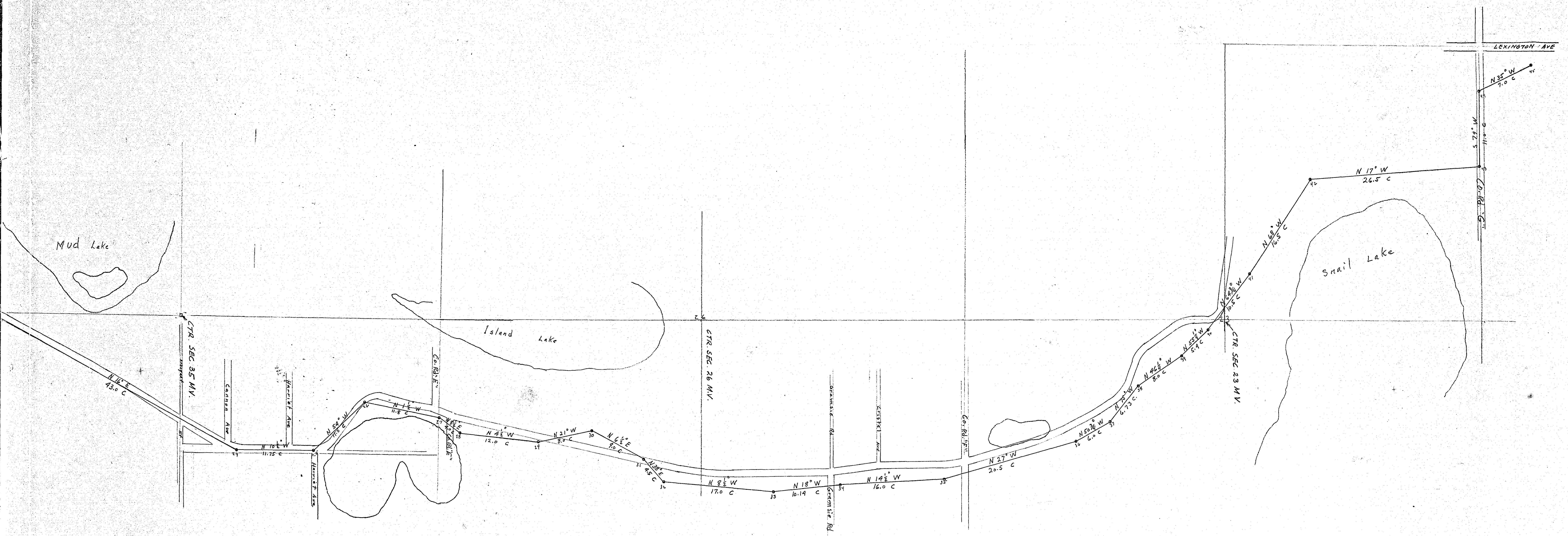
MICROFILMED
 RAMSEY CO. ENGR.

R 713



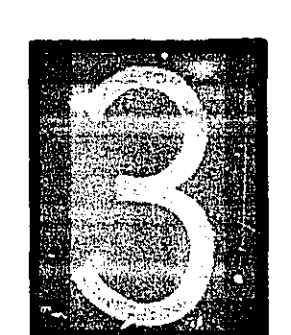


R-713
 MICROFILMED
 RAMSEY CO. ENGR.

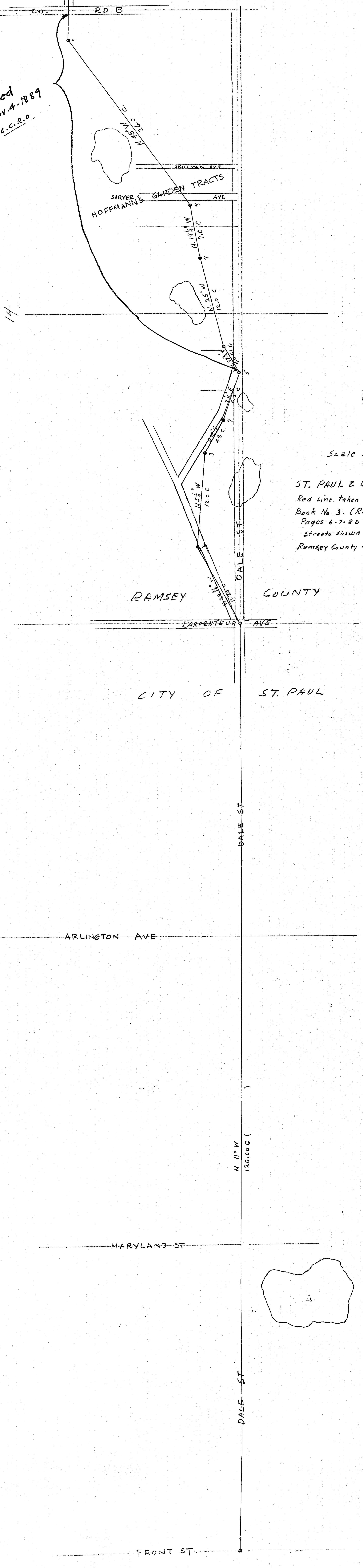


R-713
 MICROFILMED
 RAMSEY CO. ENGR.

MICROFILMED
 RAMSEY CO. ENGR.
 R-713



Vacated
Nov. 4-1889
C.C.R.O.



N
↑
Scale 1" = 400'

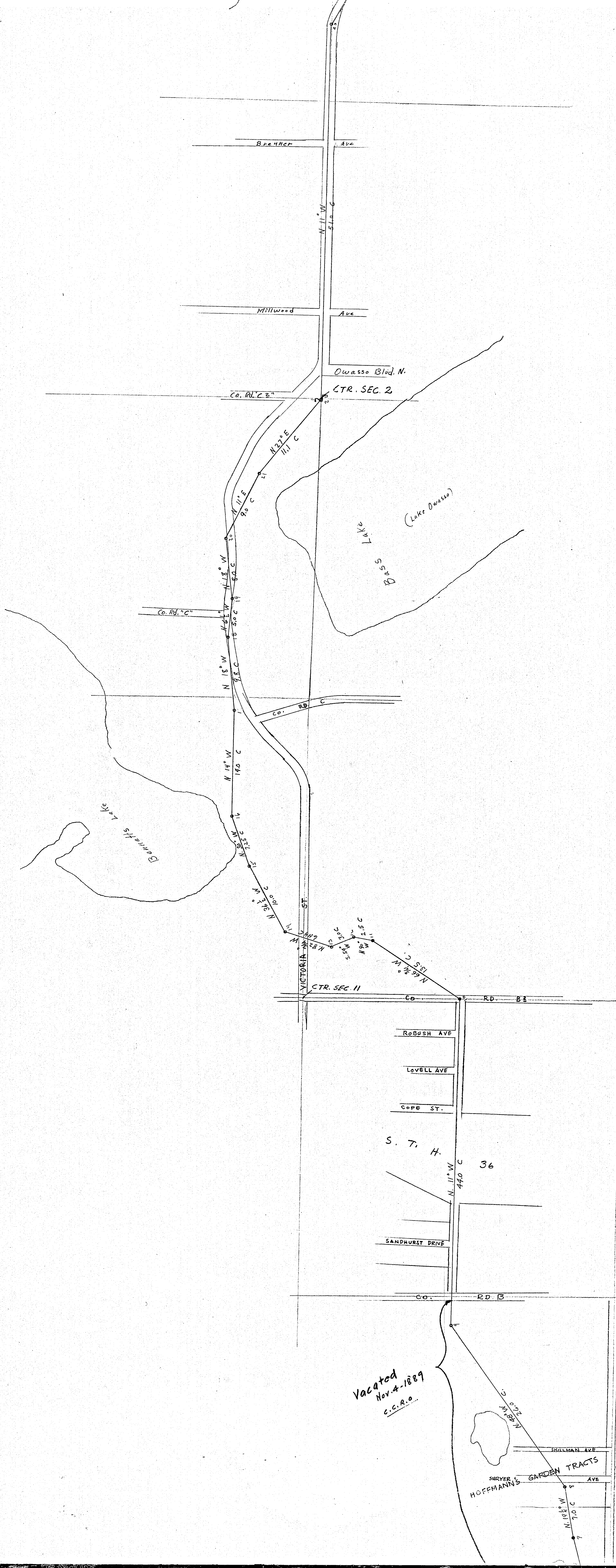
ST. PAUL & BASS LAKE RD.?
Red Line taken from Road Plat
Book No. 3. (Register of Deeds)
Pages 6-7-8 & 9
Streets shown superimposed from
Ramsey County Atlas

RAMSEY COUNTY

CITY OF ST. PAUL

23

R 713



Vacated
Nov. 4-1889
C.C.R.O.

COV E 37

