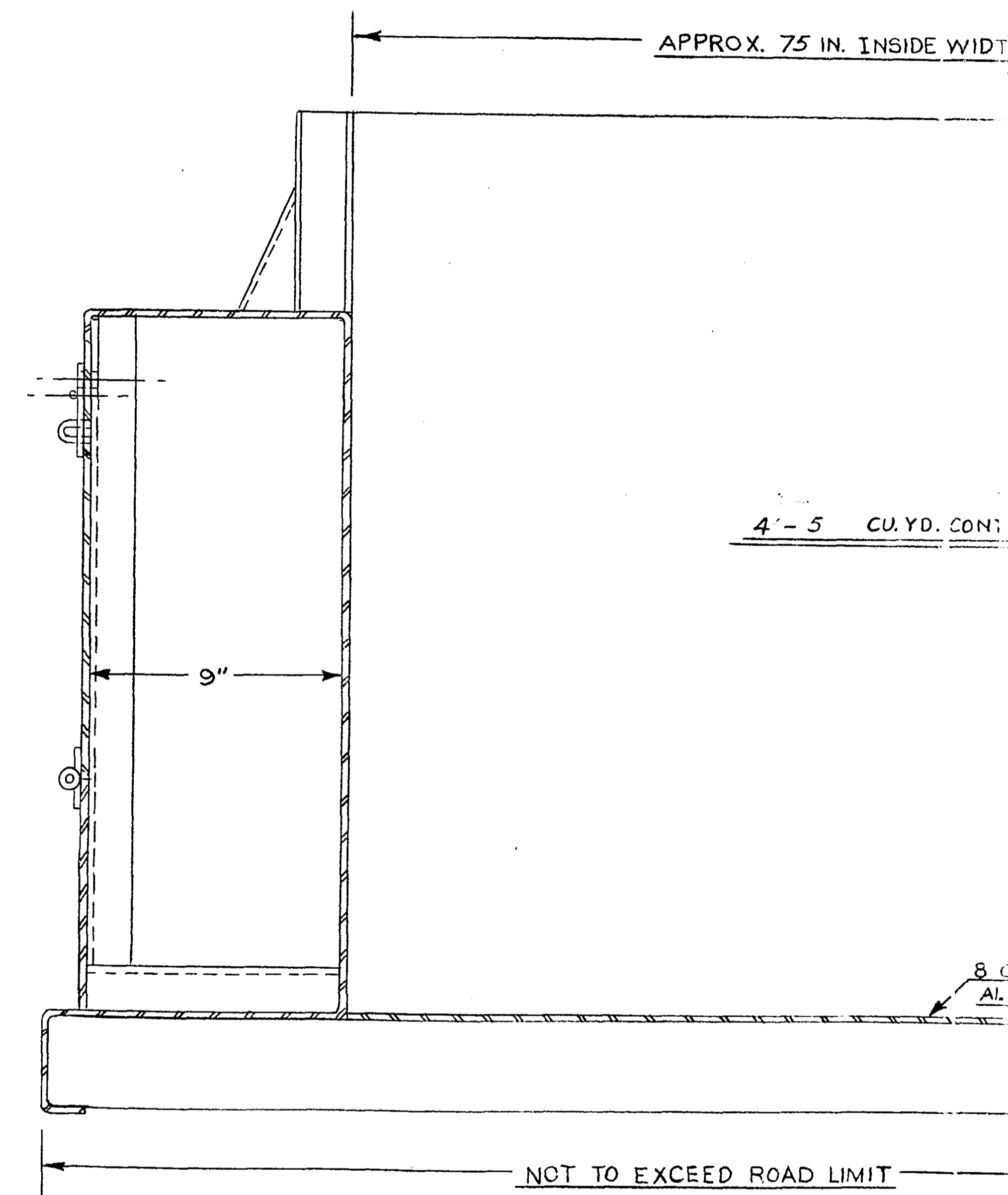
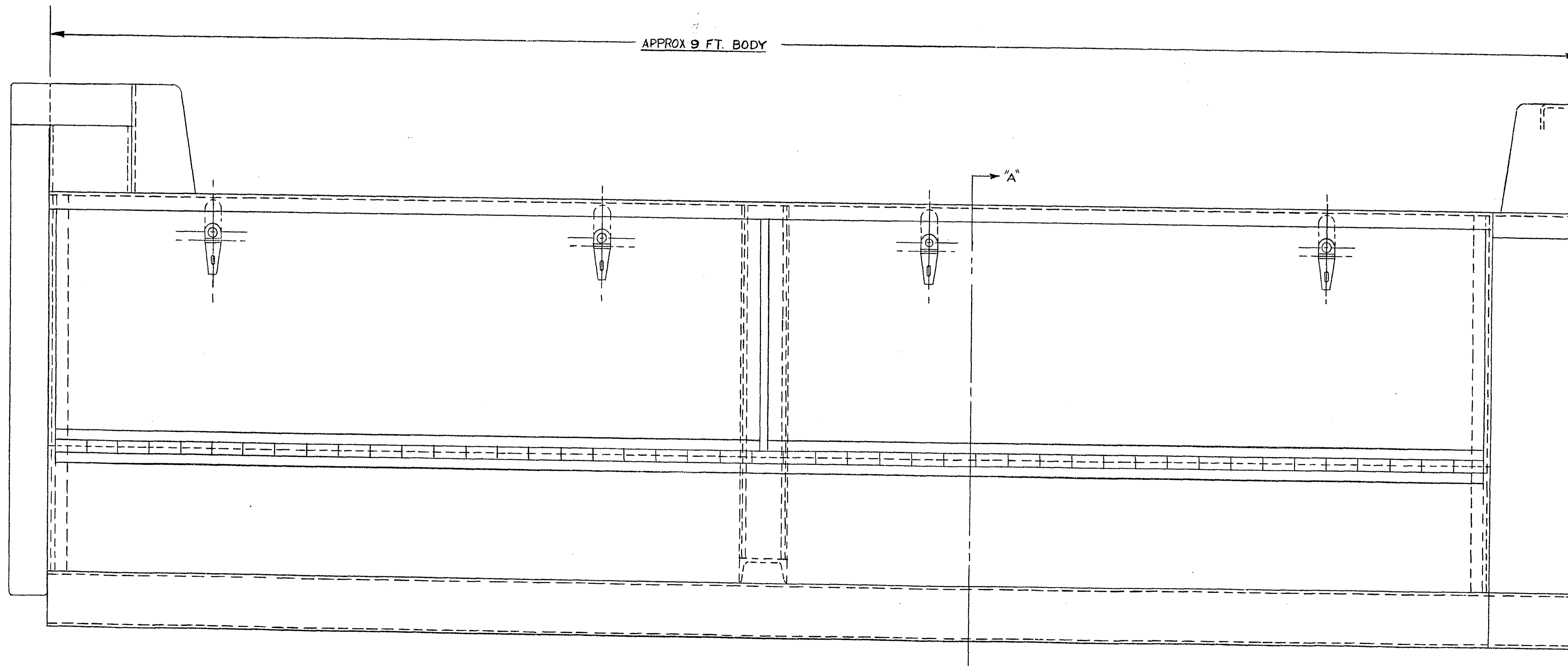
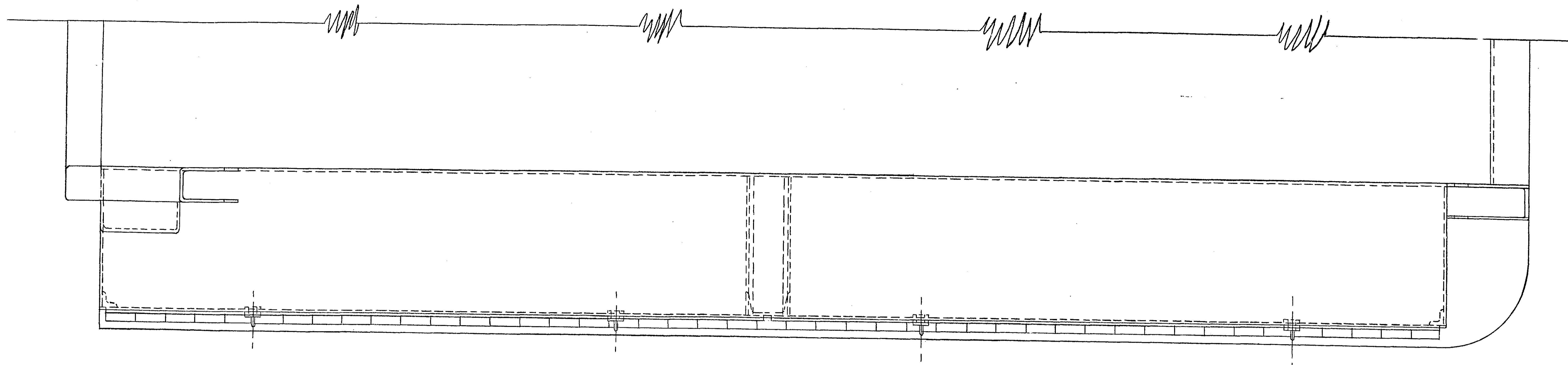


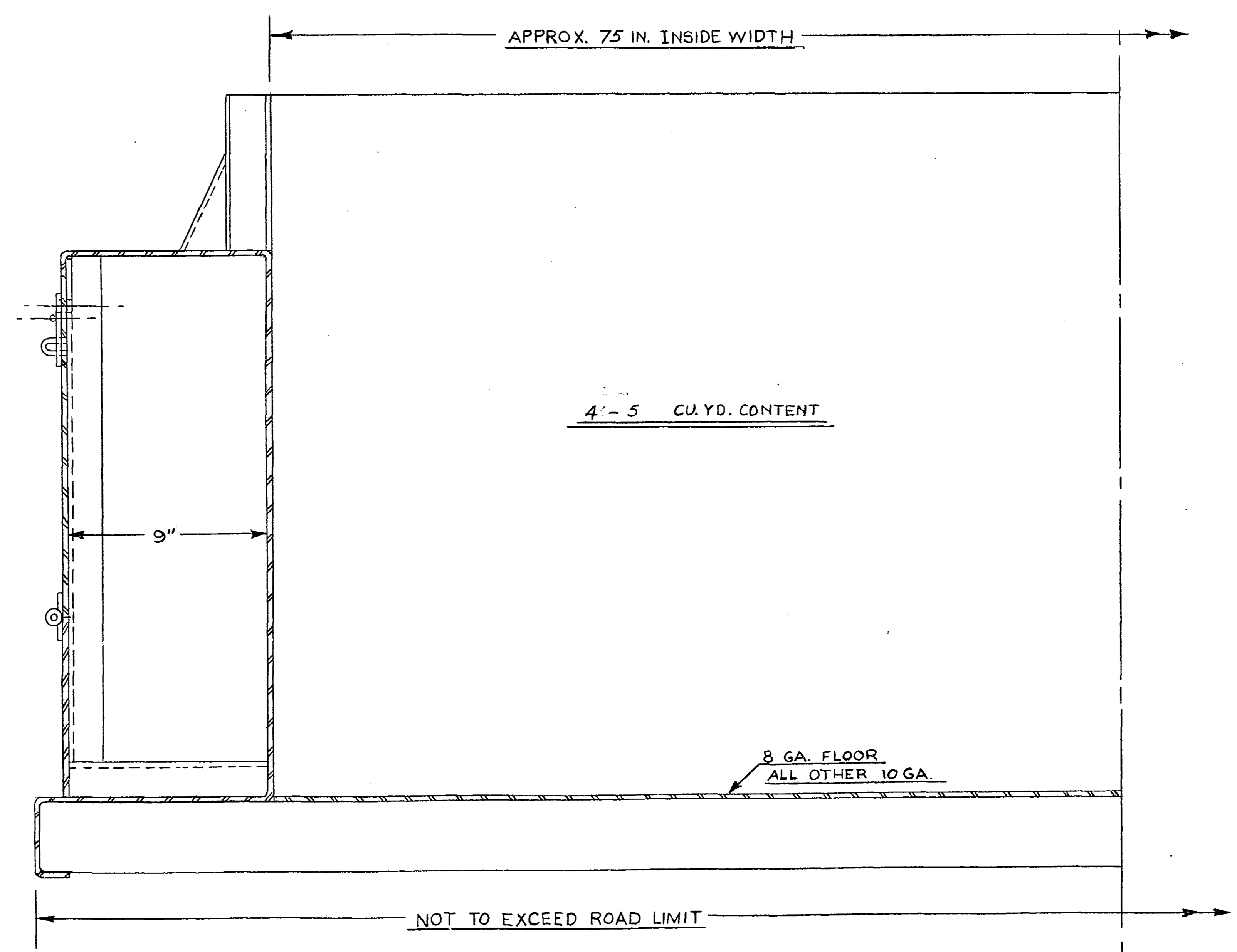
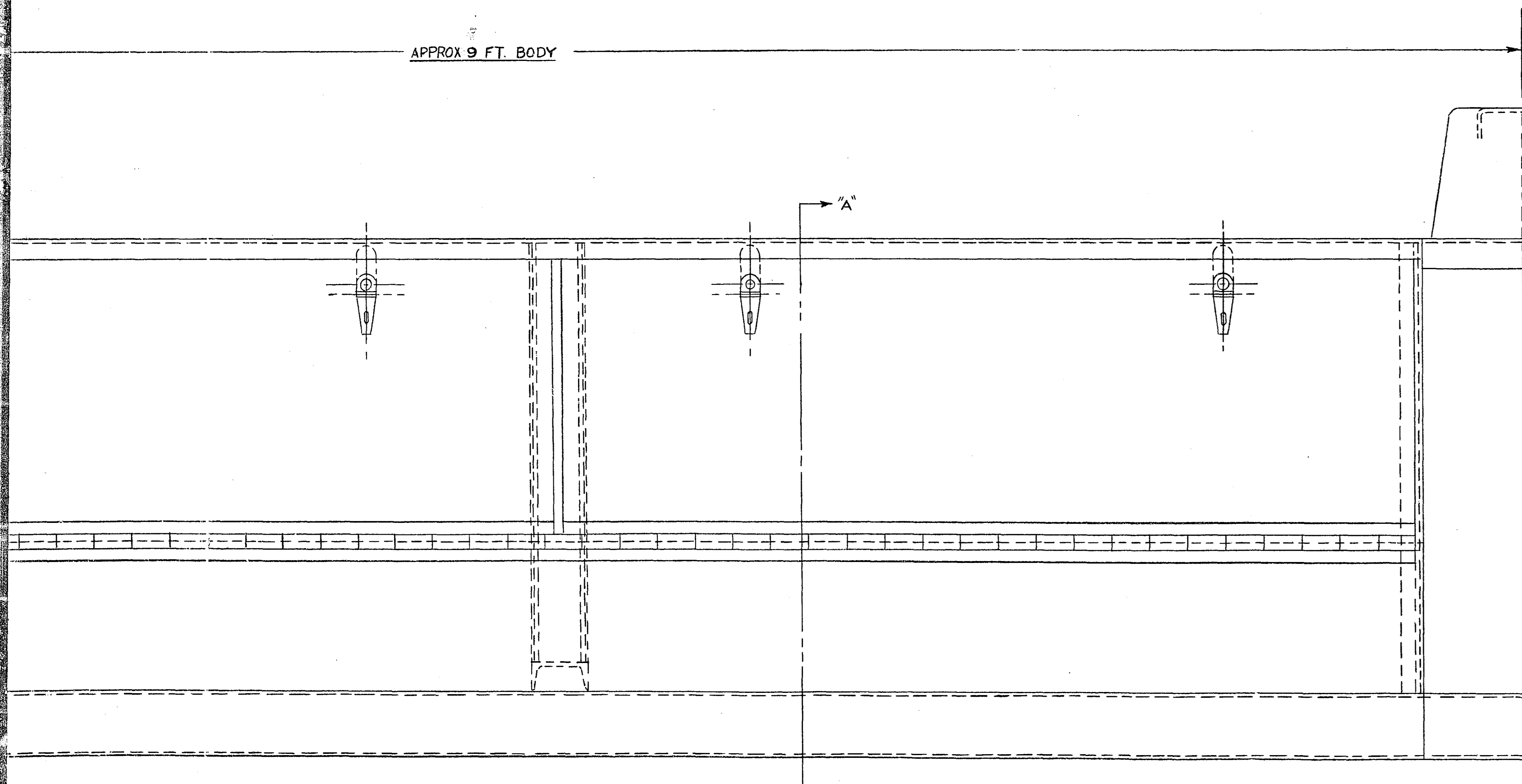
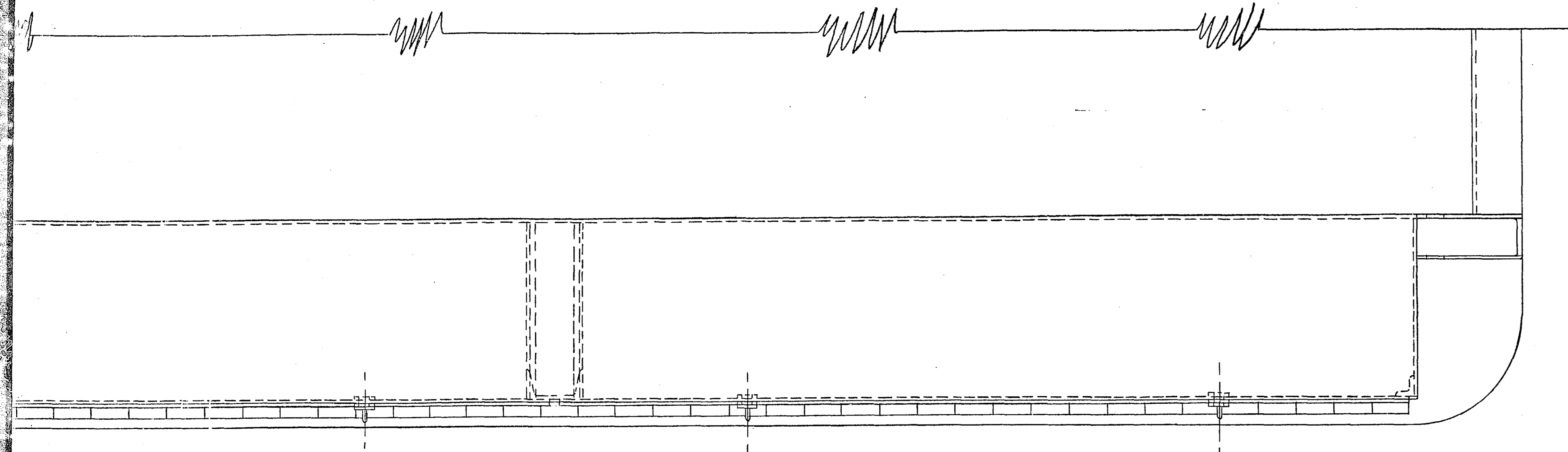
SPECIAL BODY FOR SIGN TRUCK
 OFFICE OF
 RAMSEY COUNTY ENGINEER
 HARRY S. BRONSON
 APRIL, 1959 SCALE: 1"=1'-0"



MICROFILMED
RAMSEY CO. ENGR.

R-711



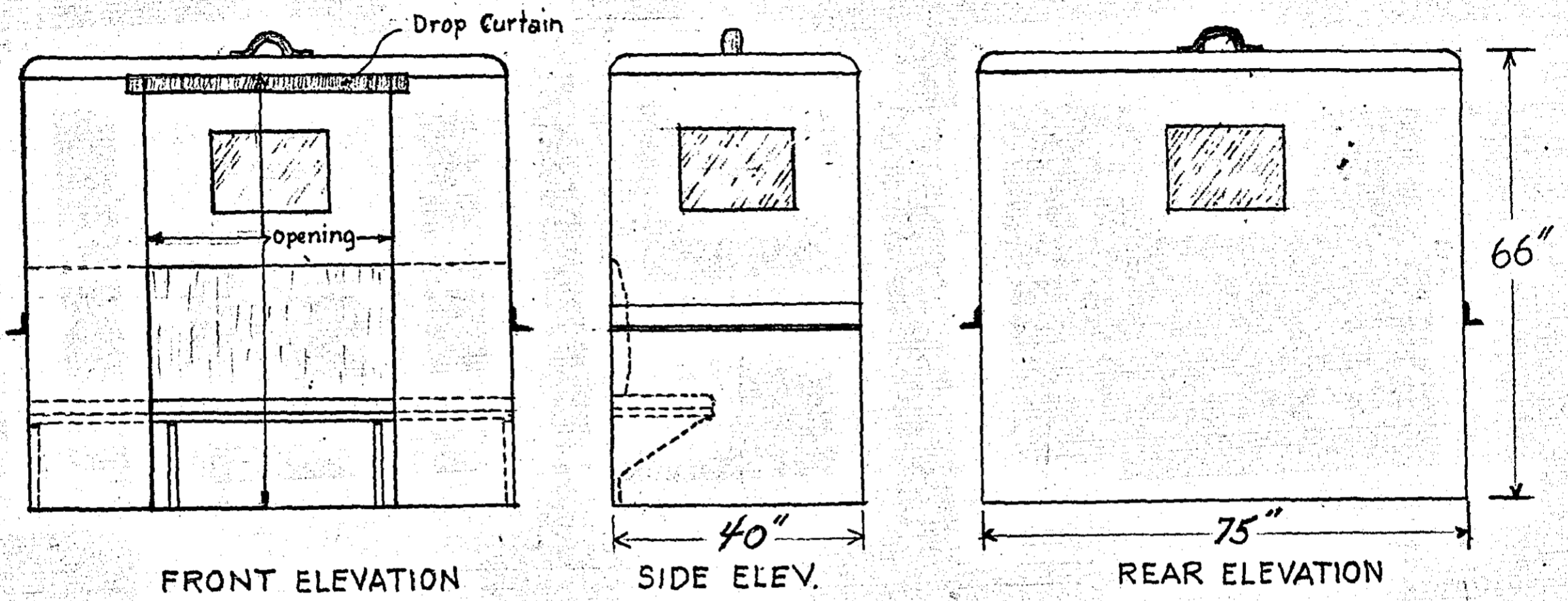


PROPOSED DUMP TOOL BOX COMBINATION
FOR
TRUCK BODY
OFFICE OF
RAMSEY COUNTY ENGINEER

MICROFILMED
RAMSEY CO. ENGR.

R-711

Atty. Gen. Crew Compartment for 3' 7 1/2" x 3' 6" x 3' 6" 16. 92. 7311. 105. 1
Construction



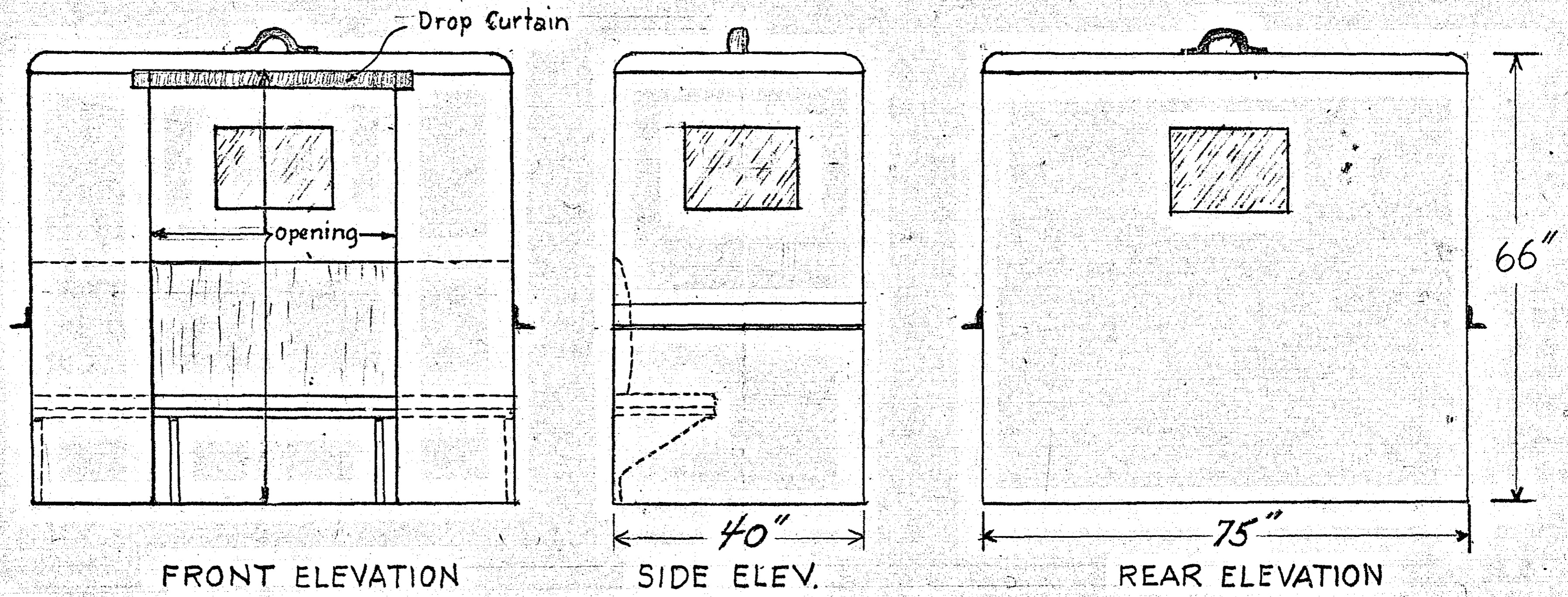
REMOVABLE CREW COMPARTMENT
FOR USE IN GRAVEL TYPE DUMP BODIES FOR
RAMSEY COUNTY ENGINEER

MICROFILMED
RAMSEY CO. ENGR.

SEPT. 1956

R-711

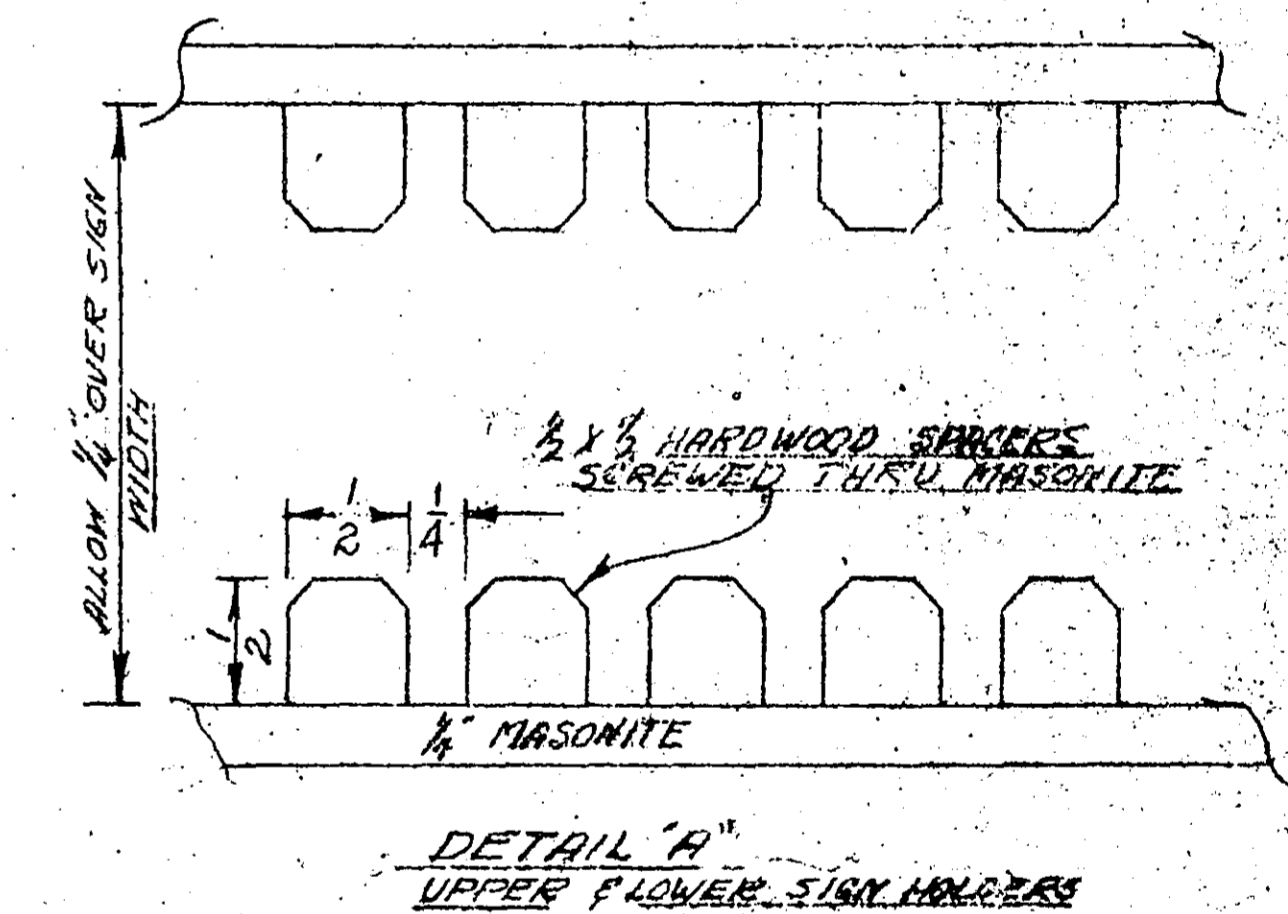
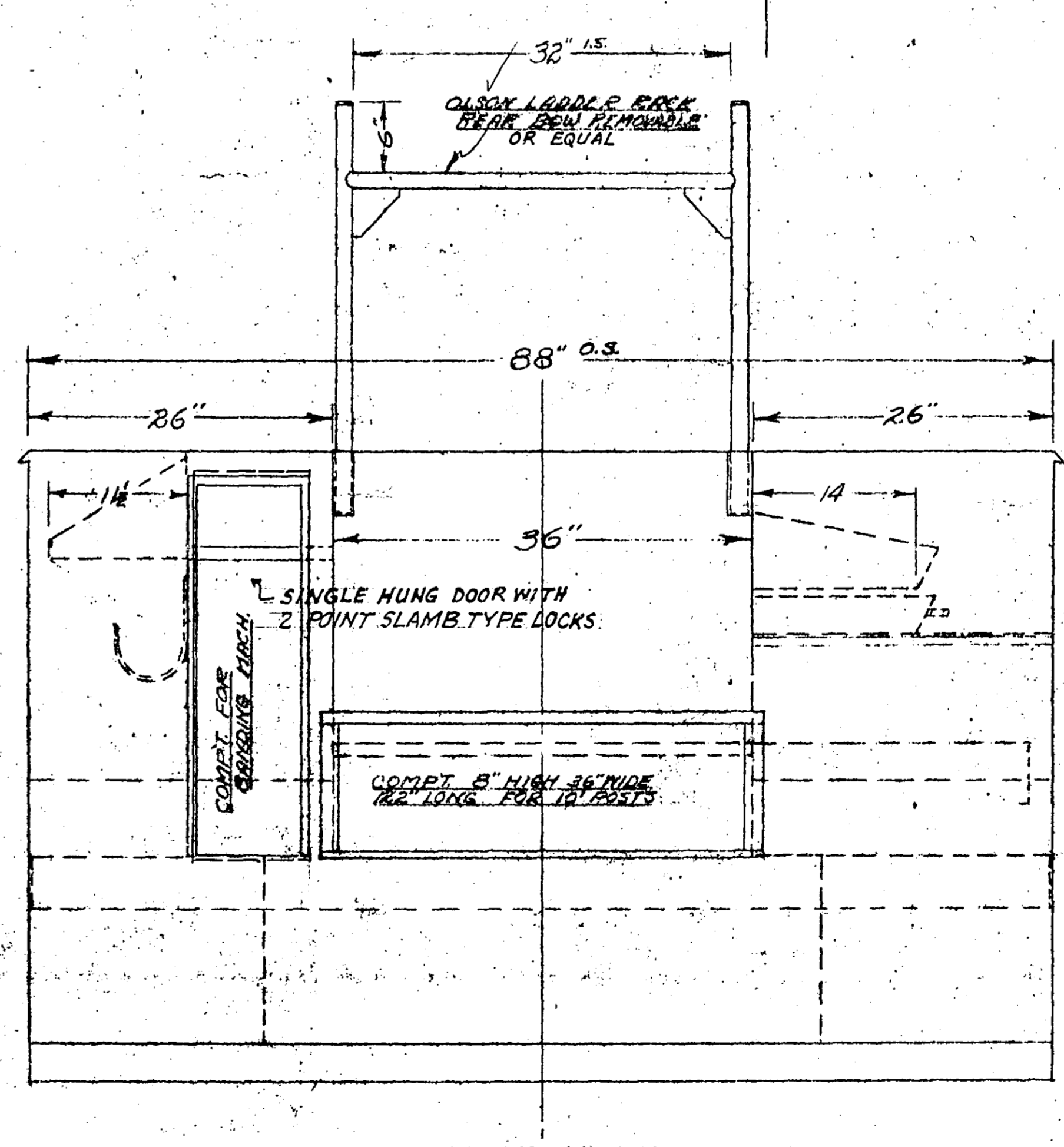
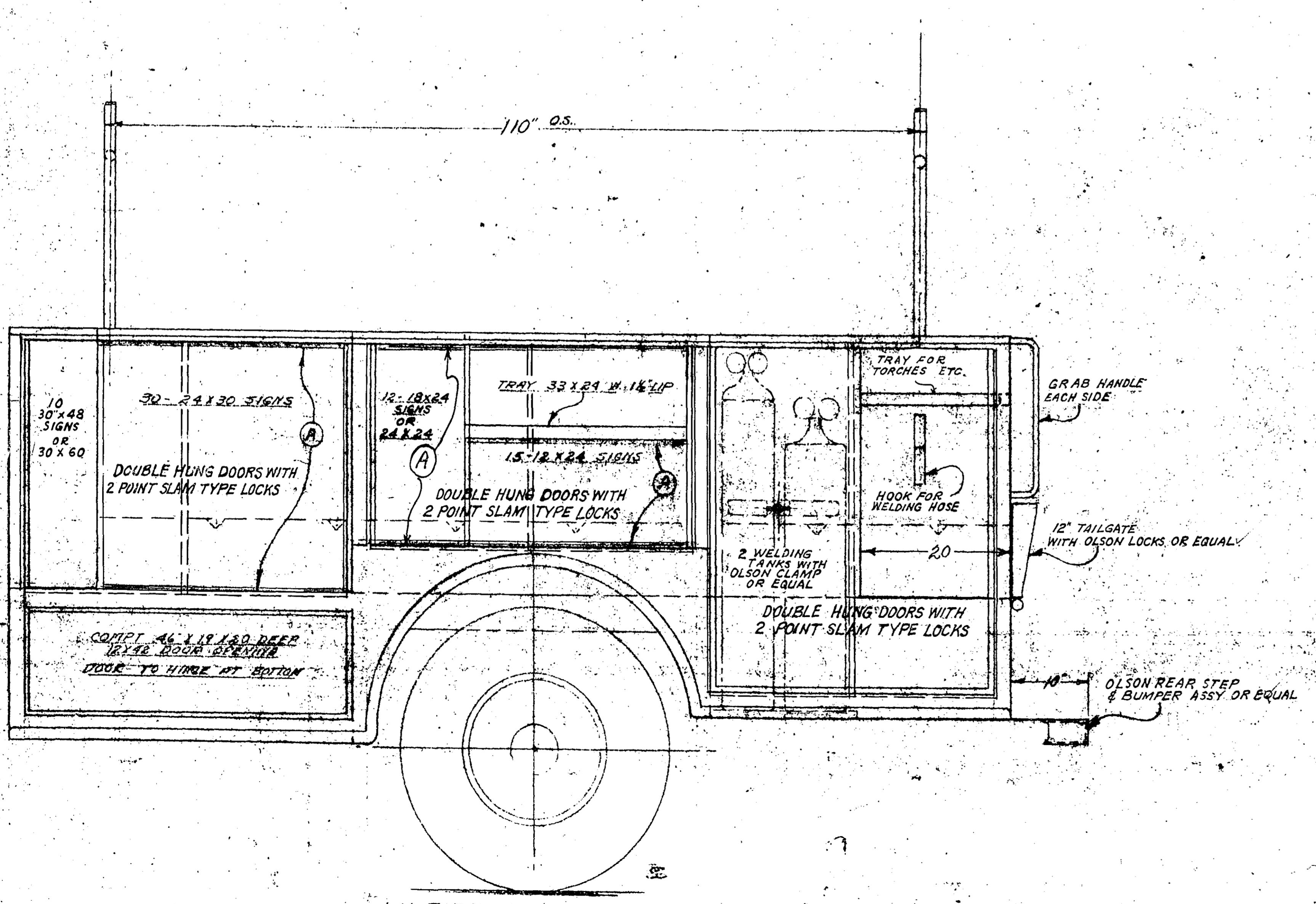
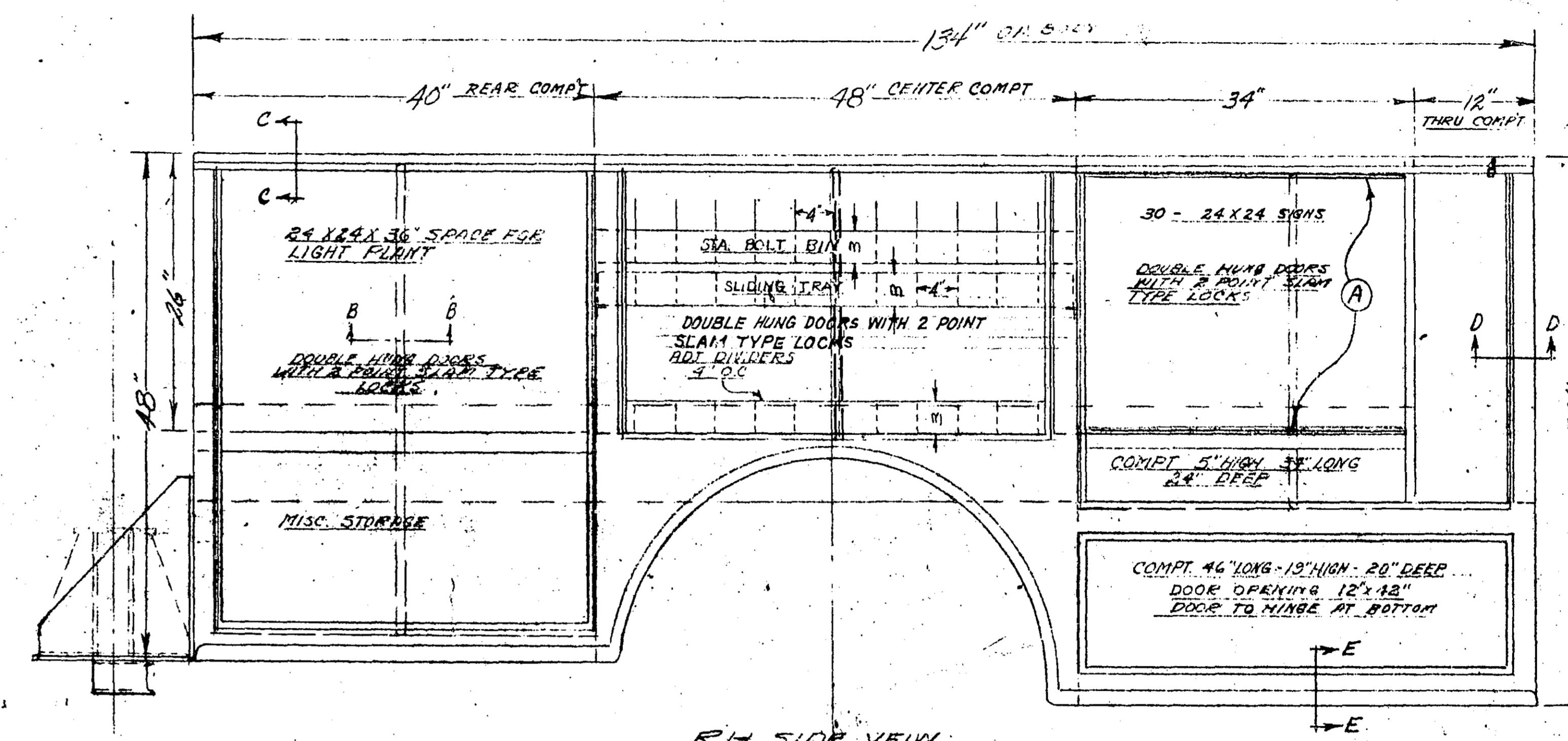
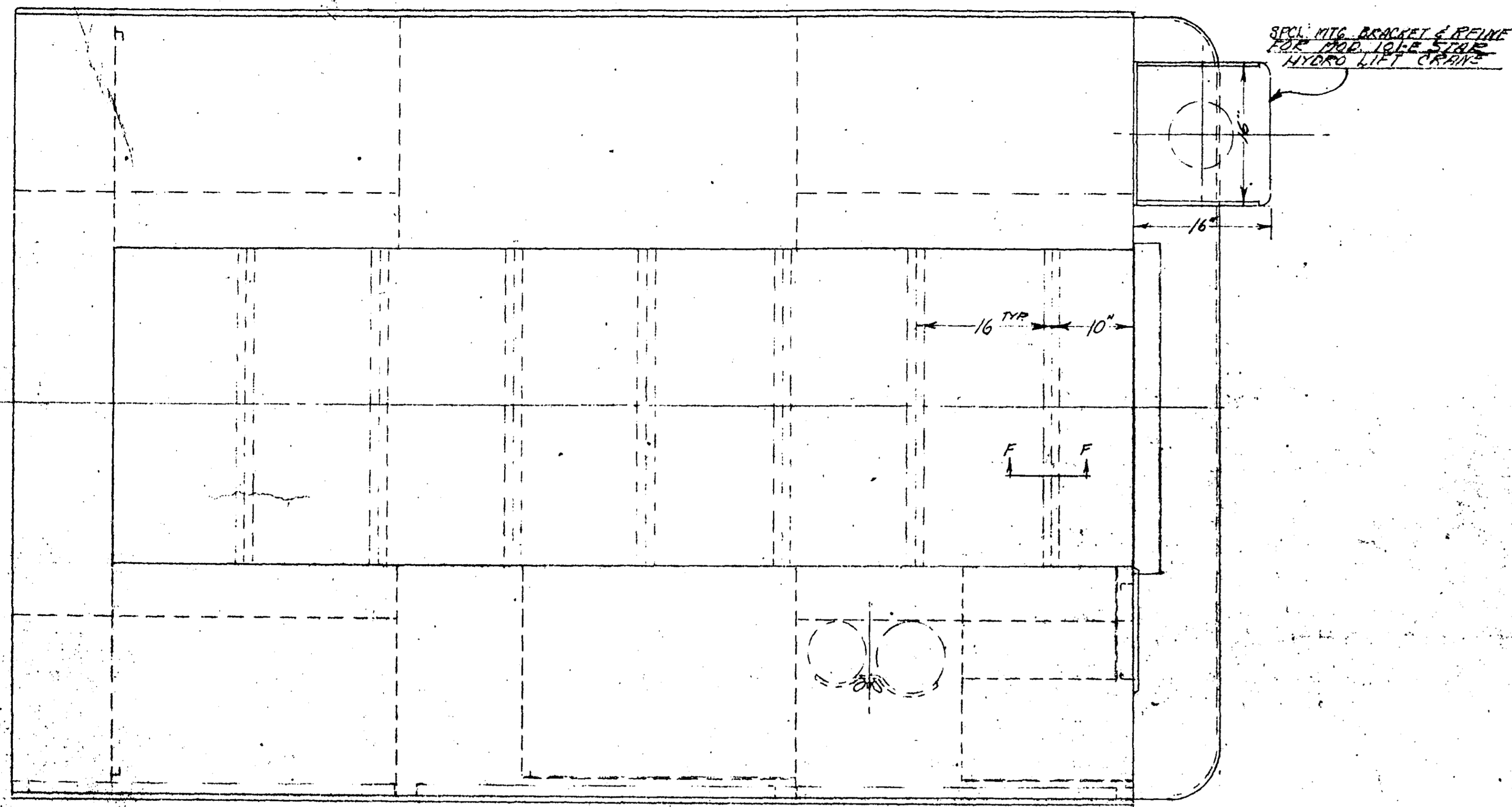
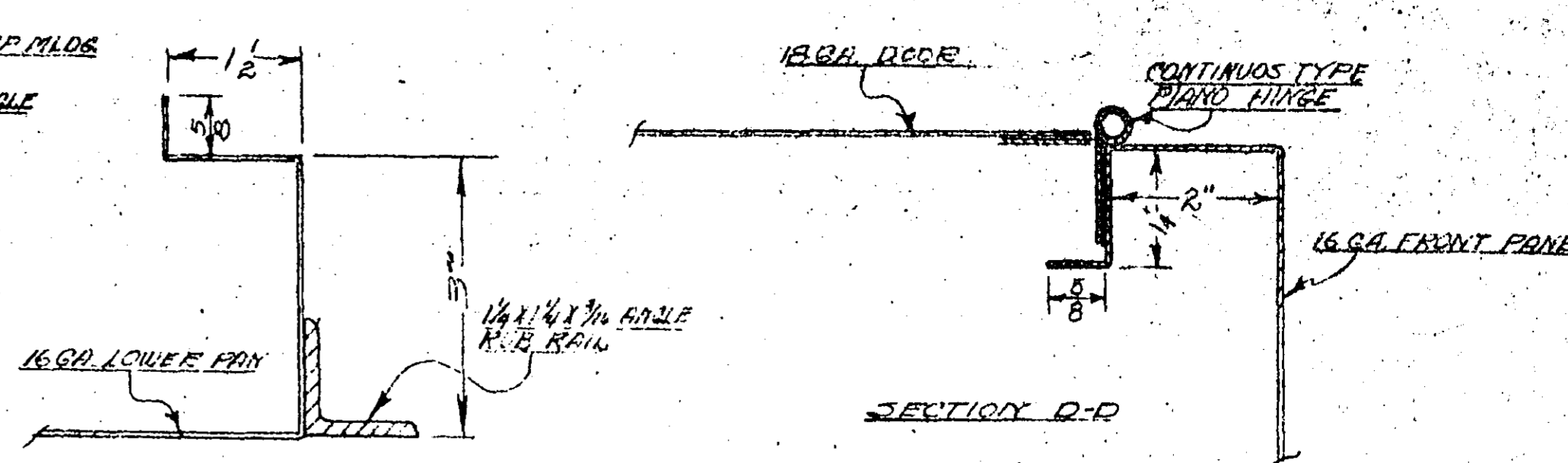
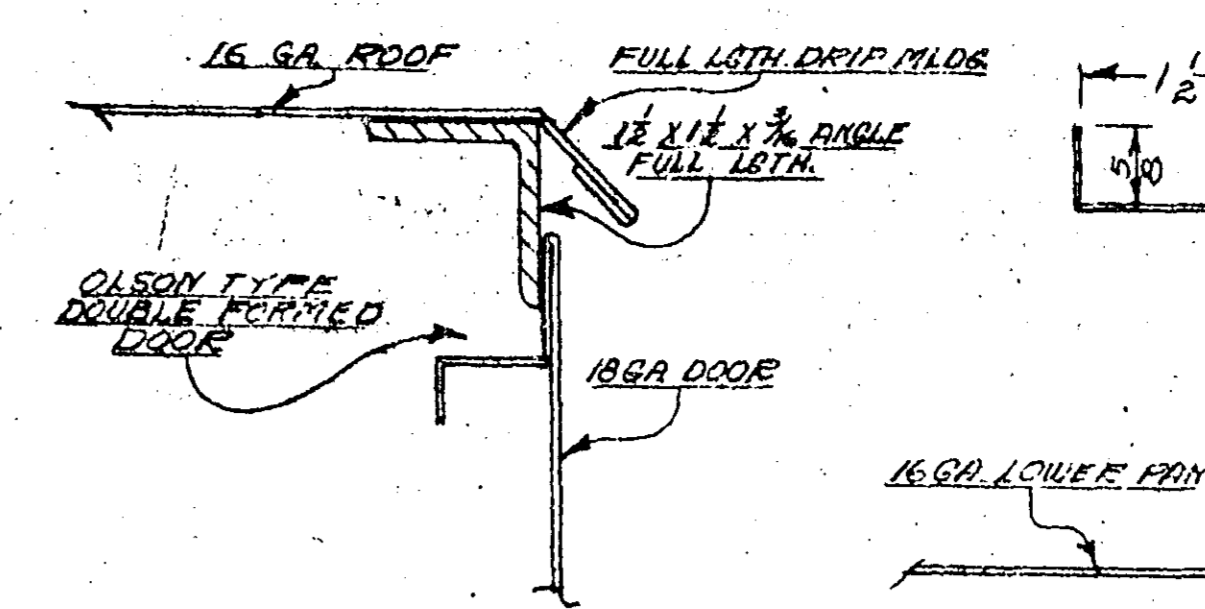
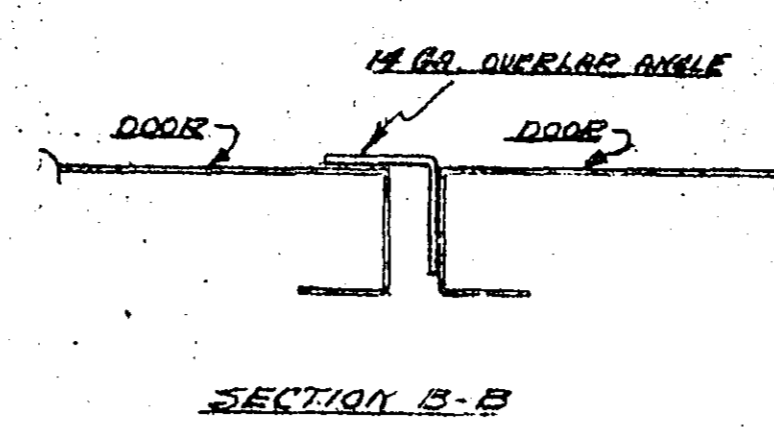
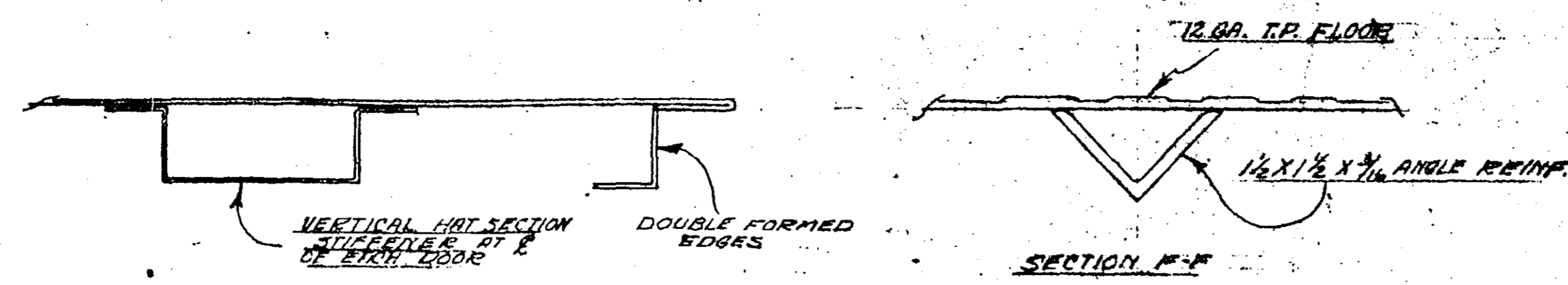
All corners 3" radius corners. 1/2" galv. pane - Post
Construction



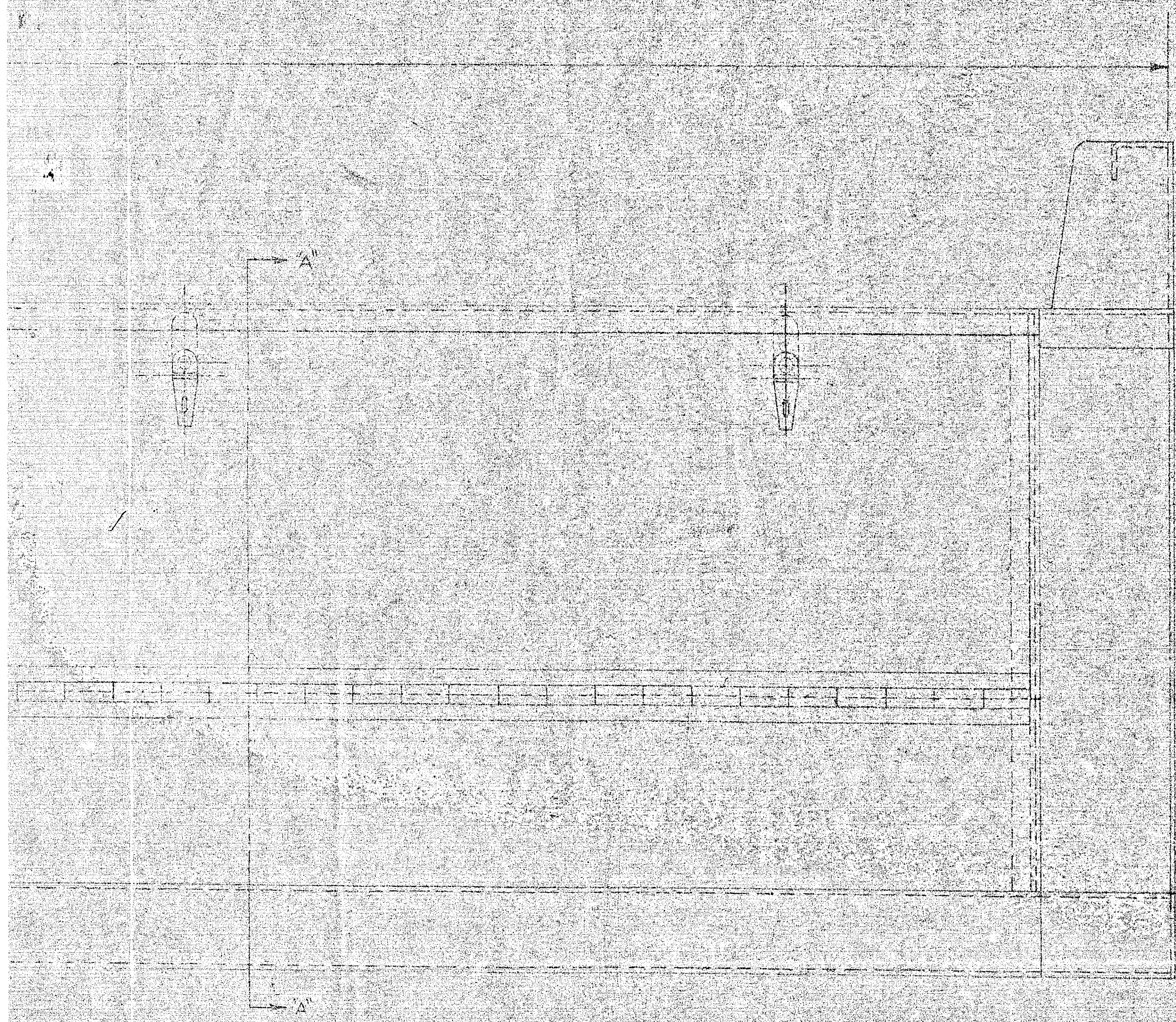
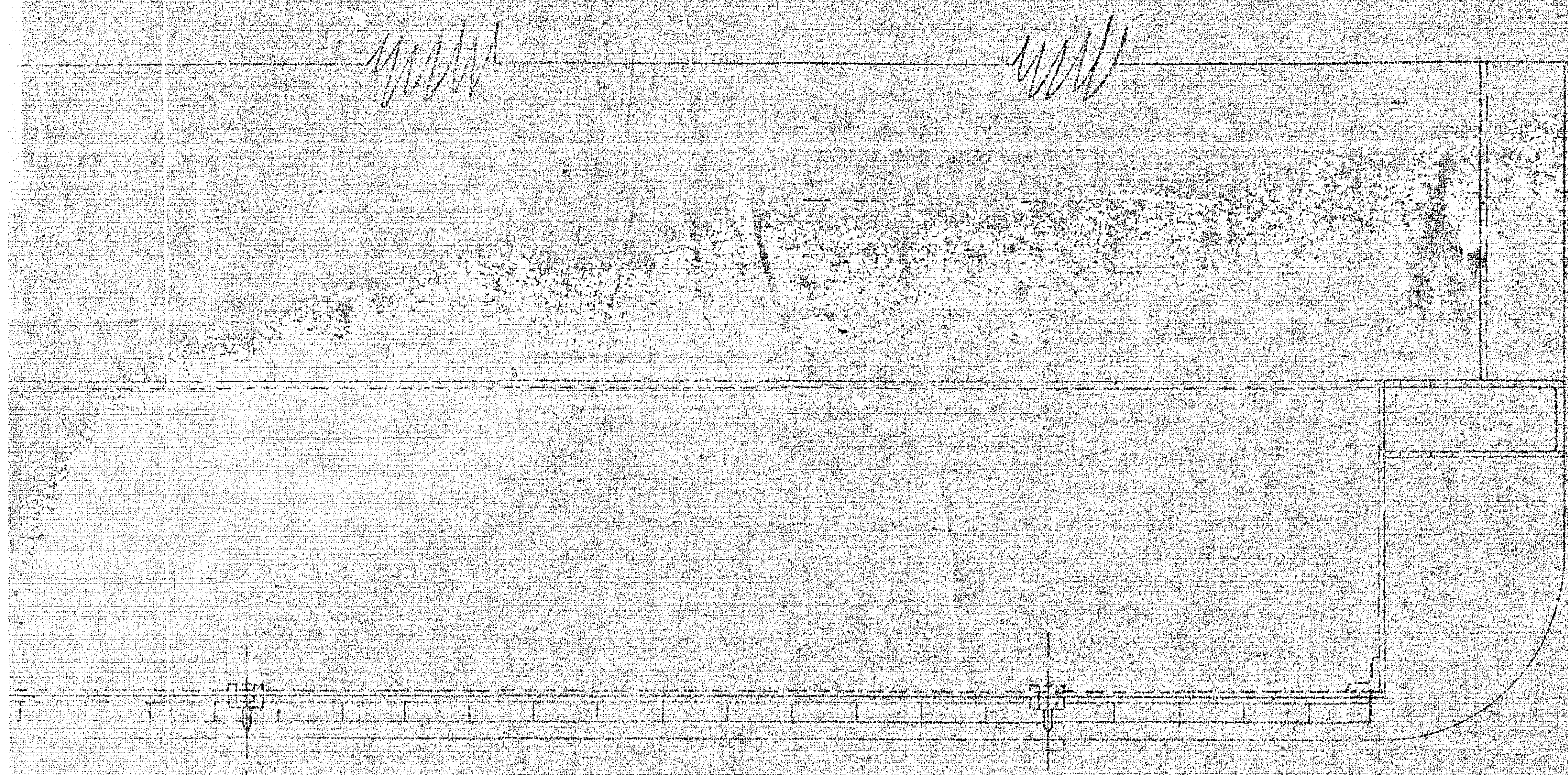
REMOVABLE CREW COMPARTMENT
FOR USE IN GRAVEL TYPE DUMP BODIES FOR
RAMSEY COUNTY ENGINEER

SEPT, 1956

R-711

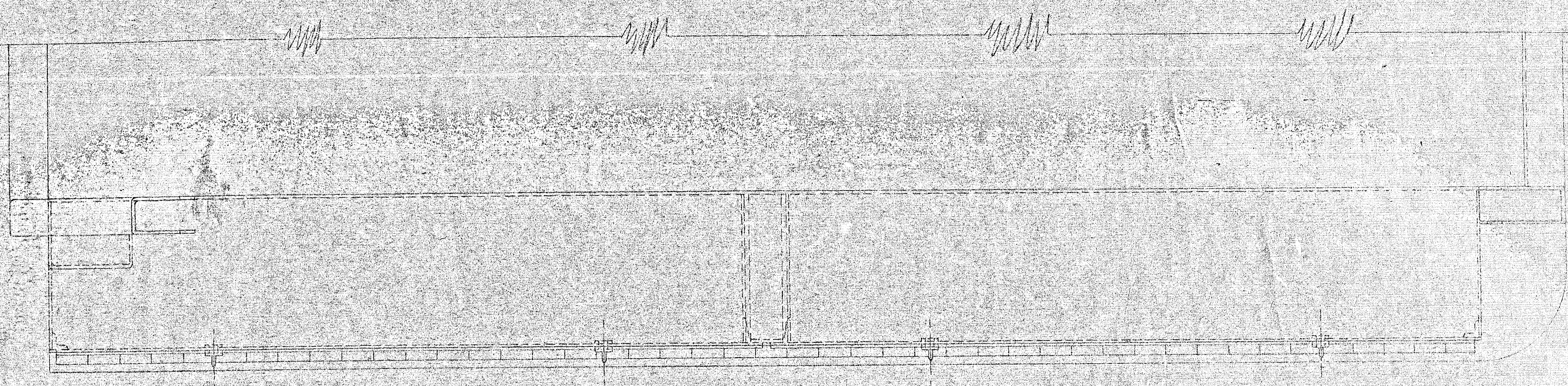


SPECIAL BODY FOR
SIGN TRUCK
OFFICE OF
RAMSEY COUNTY ENGINEER
HARRY S. BRUNSON
APRIL, 1959 SCALE: 1"=1'-0"



PROPOSED DUMP TOOL BOX COMBINATION
FOR
TRUCK BODY
OFFICE OF
RAMSEY COUNTY ENGINEER
HARRY S. BRONSON

20 Y 2 72



9
APPROX. FT BODY

