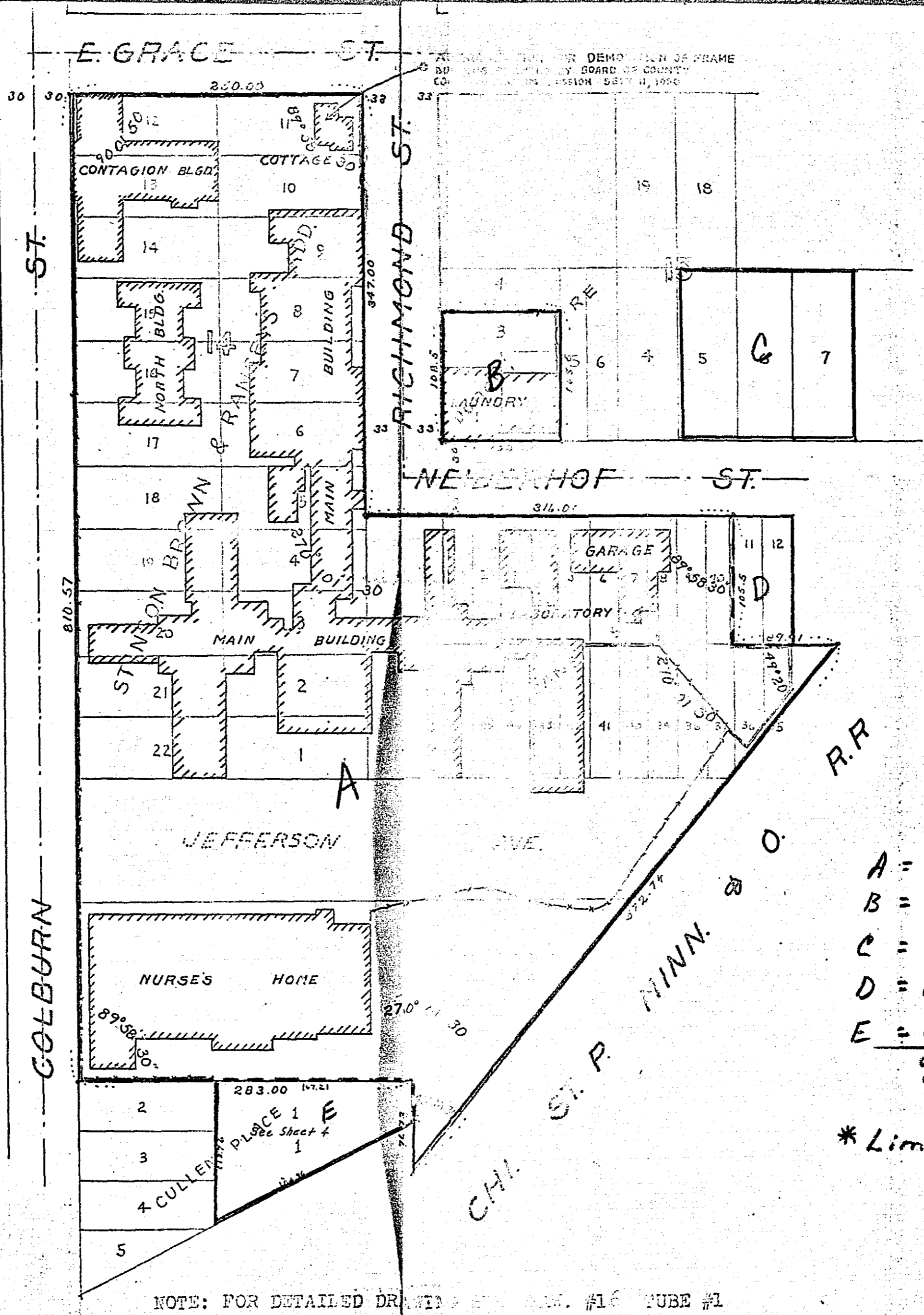


FOR DEMOLITION OF FRAME
 BUILDING BY BOARD OF COUNTY
 COMMISSIONERS SESSION SEPTEMBER 1950



SCALE 1 INCH = 100 FT
 MAY 1940
 W.P.A. PROJ. NO. 6411
 O.P. 465-71-3-383

ACRES ESTIMATED
 10.76 ACRES

- A = 8.76 Ac.
- B = 0.26 Ac.
- C = 0.50 Ac.
- D = 0.12 Ac*
- E = 0.28 Ac*
- 9.92 Ac

* Limited Public Use.

MICROFILMED
 RAMSEY CO. ENGR, P-706

OFFICE OF
RAMSEY COUNTY SURVEYOR
HARRY S. BRONSON

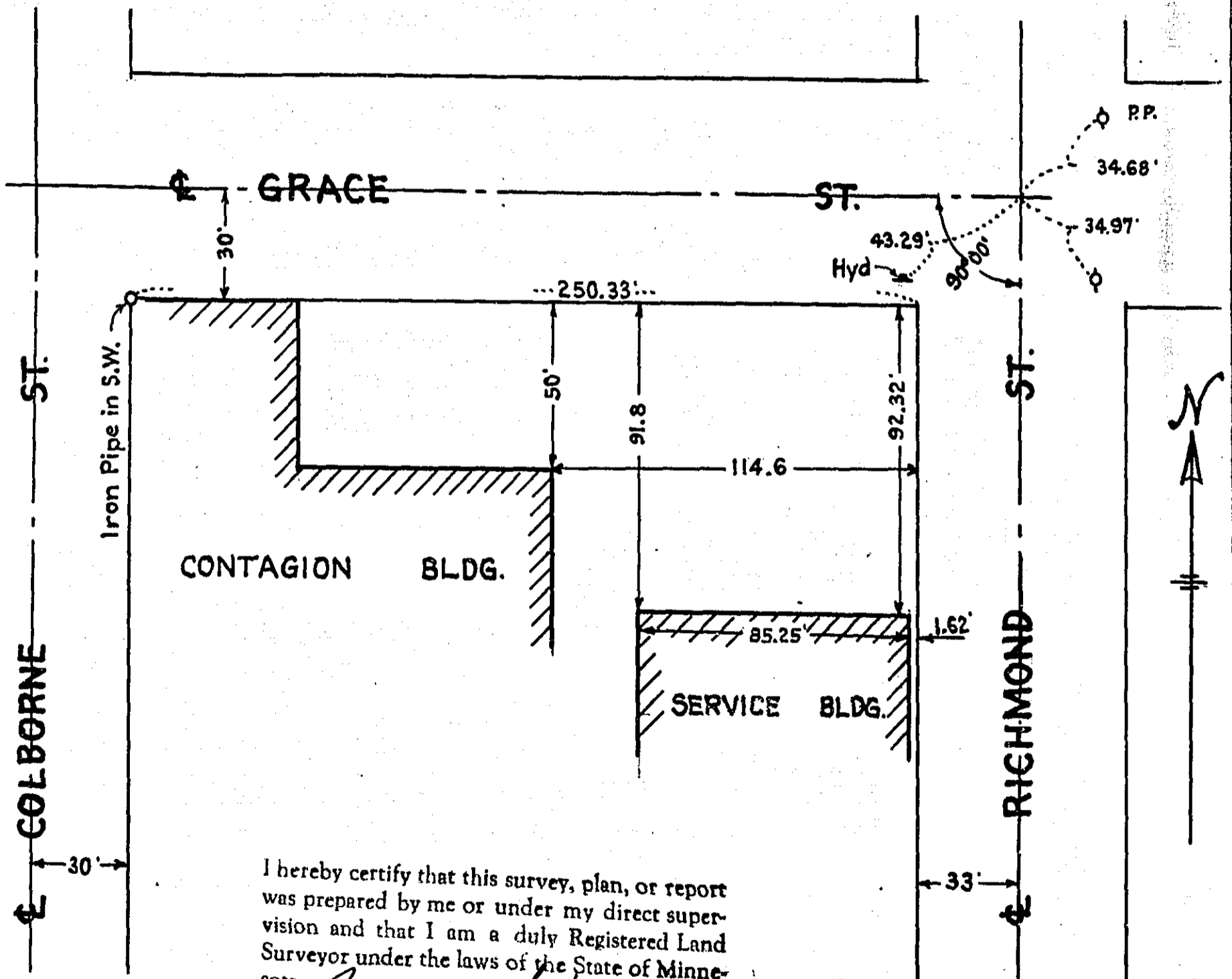
PARTIAL SURVEY OF

ANKER HOSPITAL PROPERTY

SOUTH OF GRACE ST. BETWEEN COLBORNE ST. AND RICHMOND ST.

SCALE - 1 IN. = 50 FT.

JUNE 29, 1951



I hereby certify that this survey, plan, or report was prepared by me or under my direct supervision and that I am a duly Registered Land Surveyor under the laws of the State of Minnesota.

Harry S. Bronson

Date 7/3/51 Reg. No. 818

MICROFILMED
RAMSEY CO. ENGR.