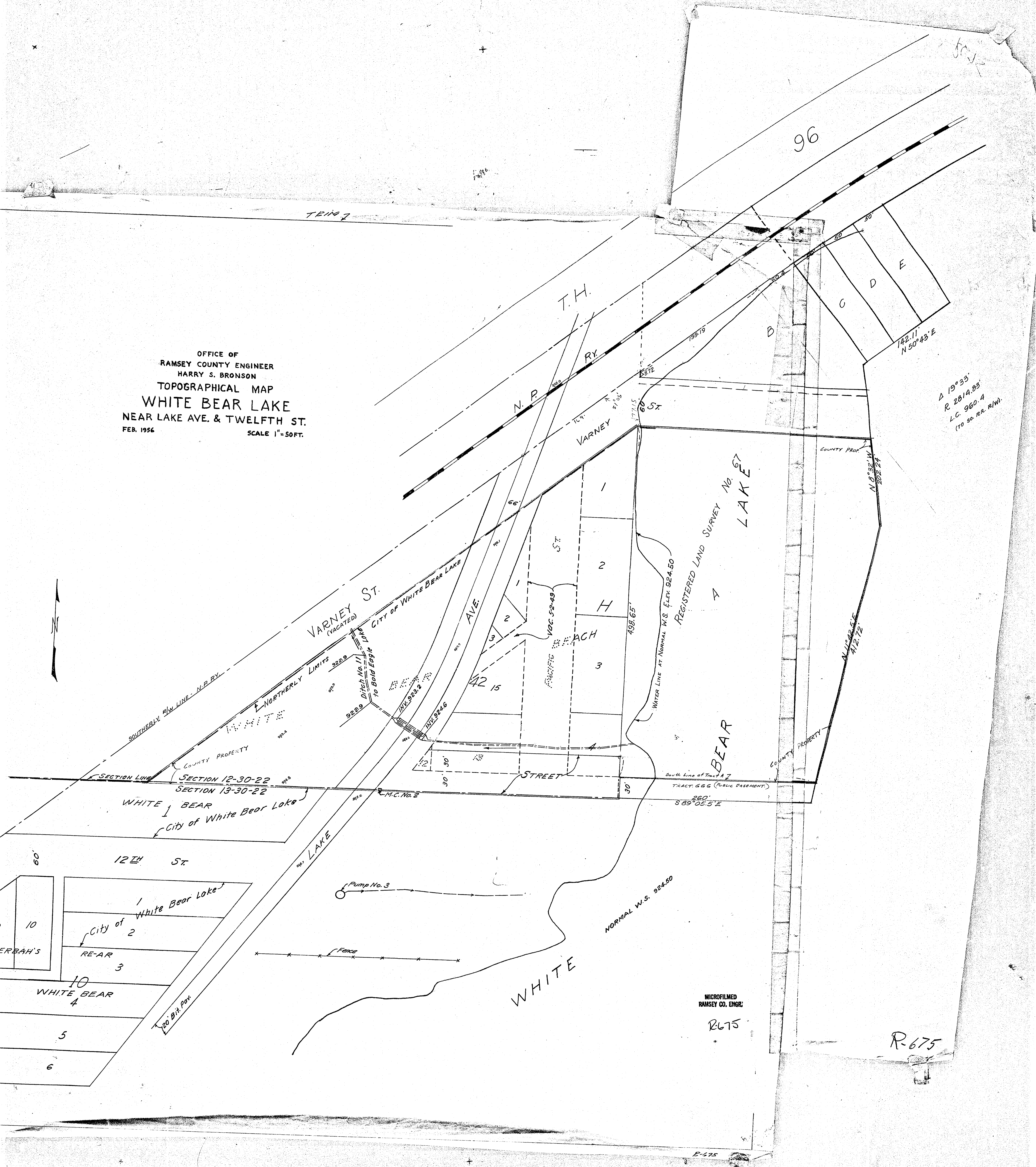
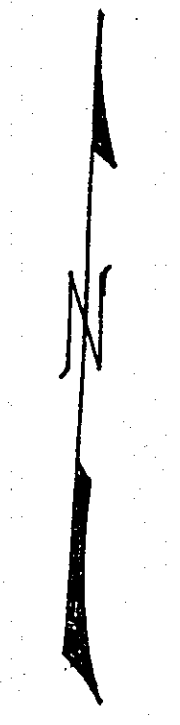


OFFICE OF
 RAMSEY COUNTY ENGINEER
 HARRY S. BRONSON
 TOPOGRAPHICAL MAP
 WHITE BEAR LAKE
 NEAR LAKE AVE. & TWELFTH ST.
 FEB. 1956 SCALE 1" = 50 FT.



$\Delta 19^{\circ}33'$
 $R 2814.83'$
 $L.C. 960.4$
 (TO SO. RR. E/W.)

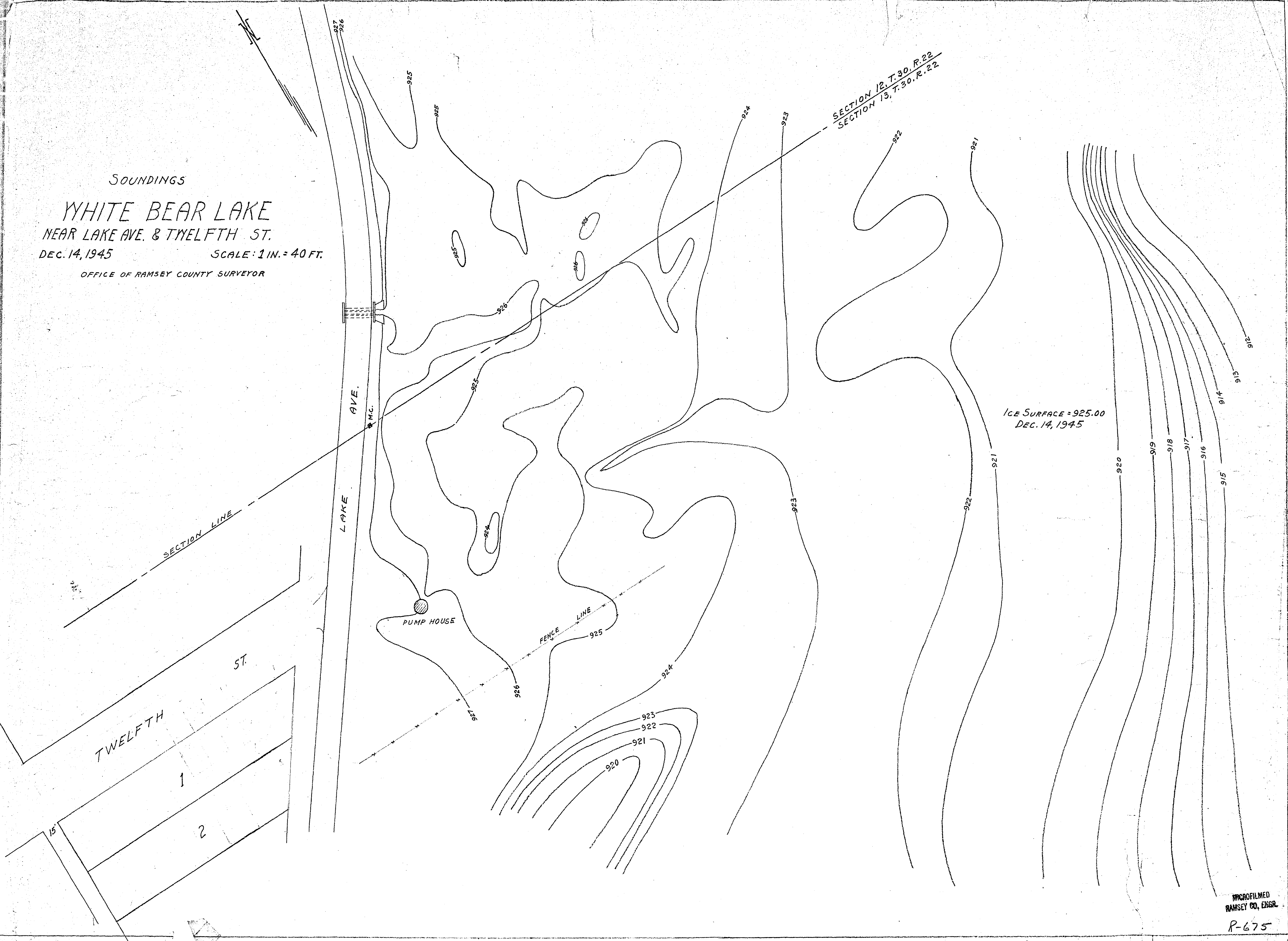
MICROFILMED
 RAMSEY CO. ENGR.

R-675

R-675

R-675

SOUNDINGS
WHITE BEAR LAKE
NEAR LAKE AVE. & TWELFTH ST.
DEC. 14, 1945 SCALE: 1 IN. = 40 FT.
OFFICE OF RAMSEY COUNTY SURVEYOR



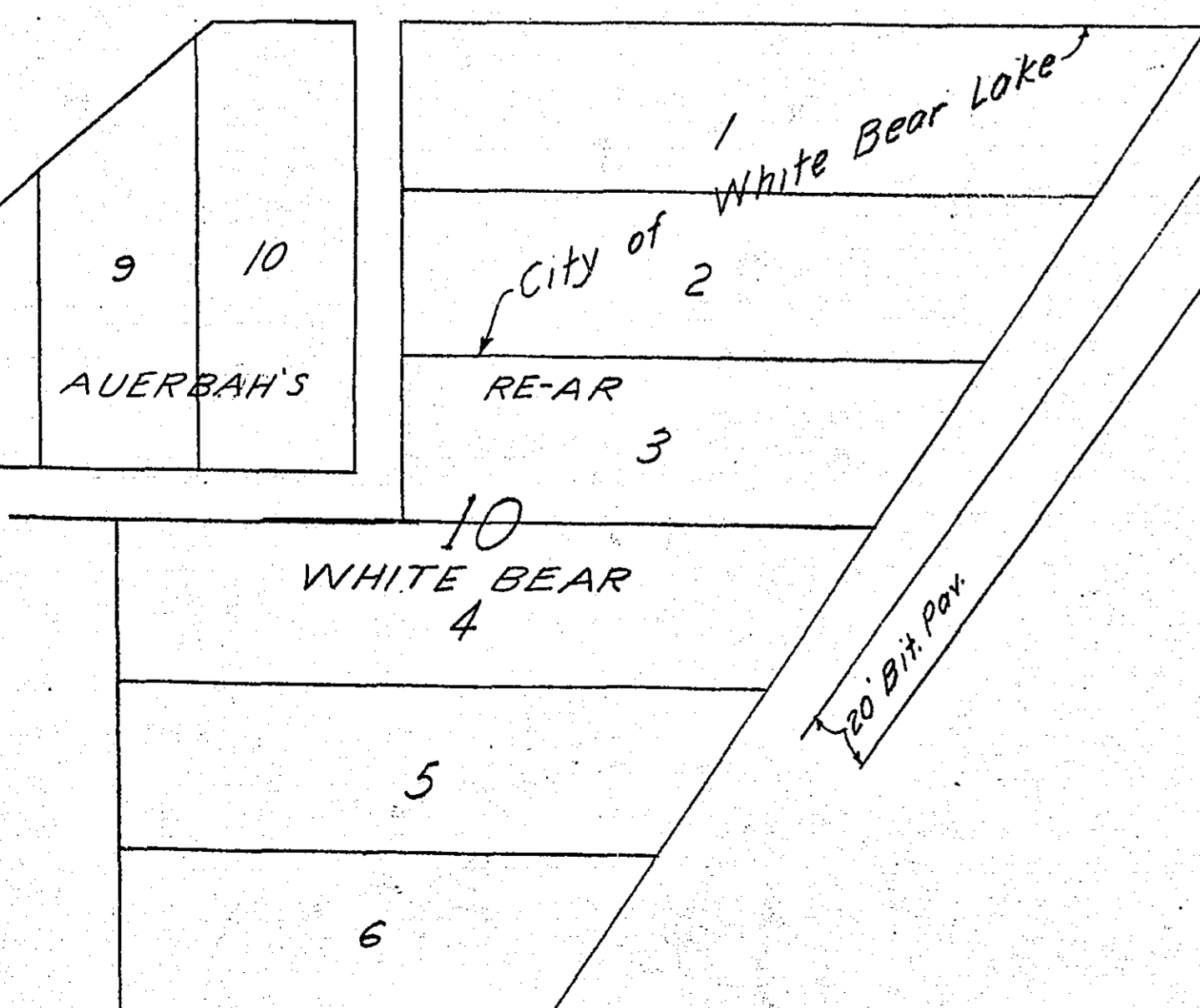
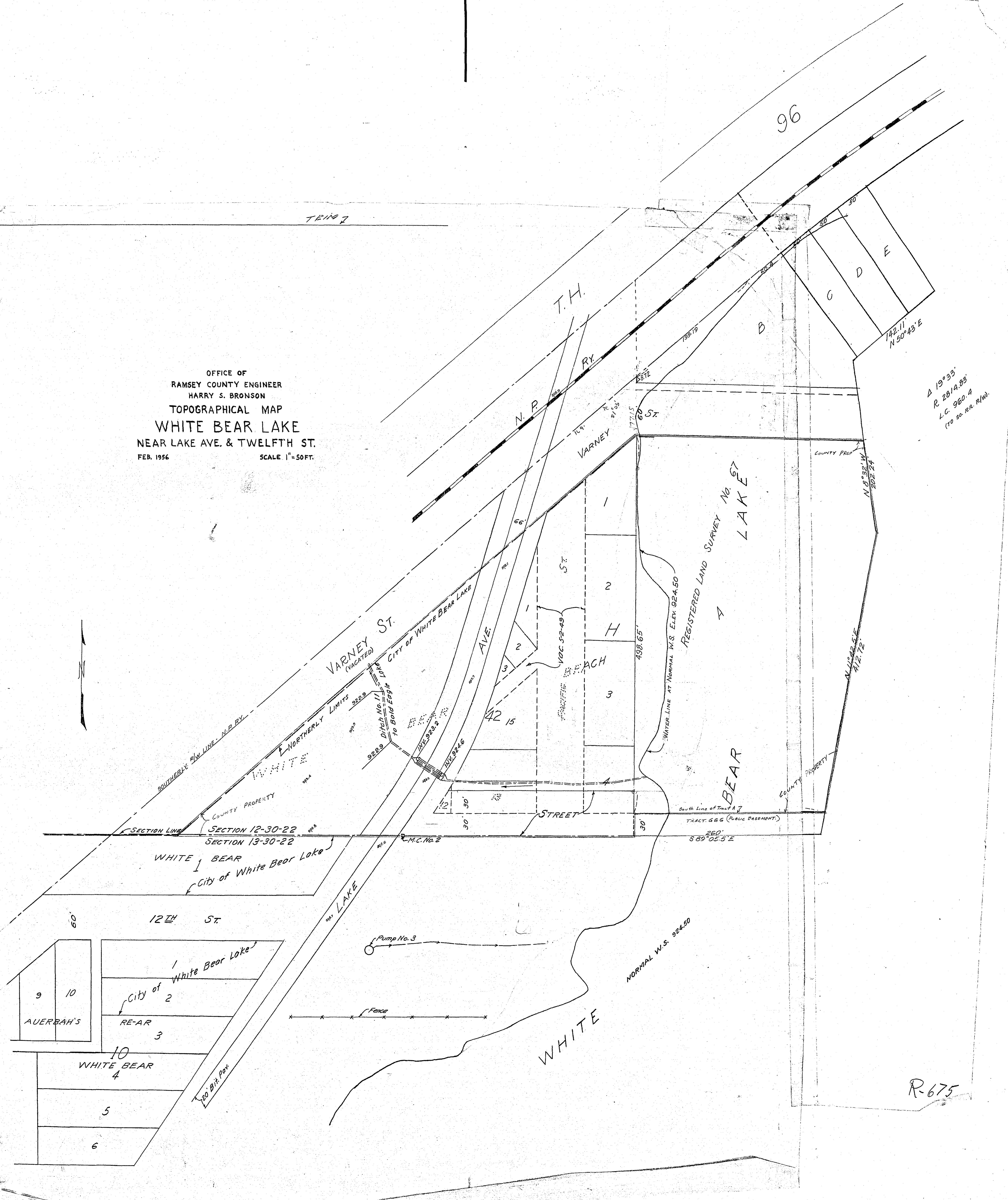
ICE SURFACE = 925.00
DEC. 14, 1945

OFFICE OF
 RAMSEY COUNTY ENGINEER
 HARRY S. BRONSON
 TOPOGRAPHICAL MAP
 WHITE BEAR LAKE
 NEAR LAKE AVE. & TWELFTH ST.
 FEB. 1956 SCALE 1"=50 FT.

A 19°33'
 R 2814.93'
 L.C. 960.4
 (70 50. R.R. R/W)

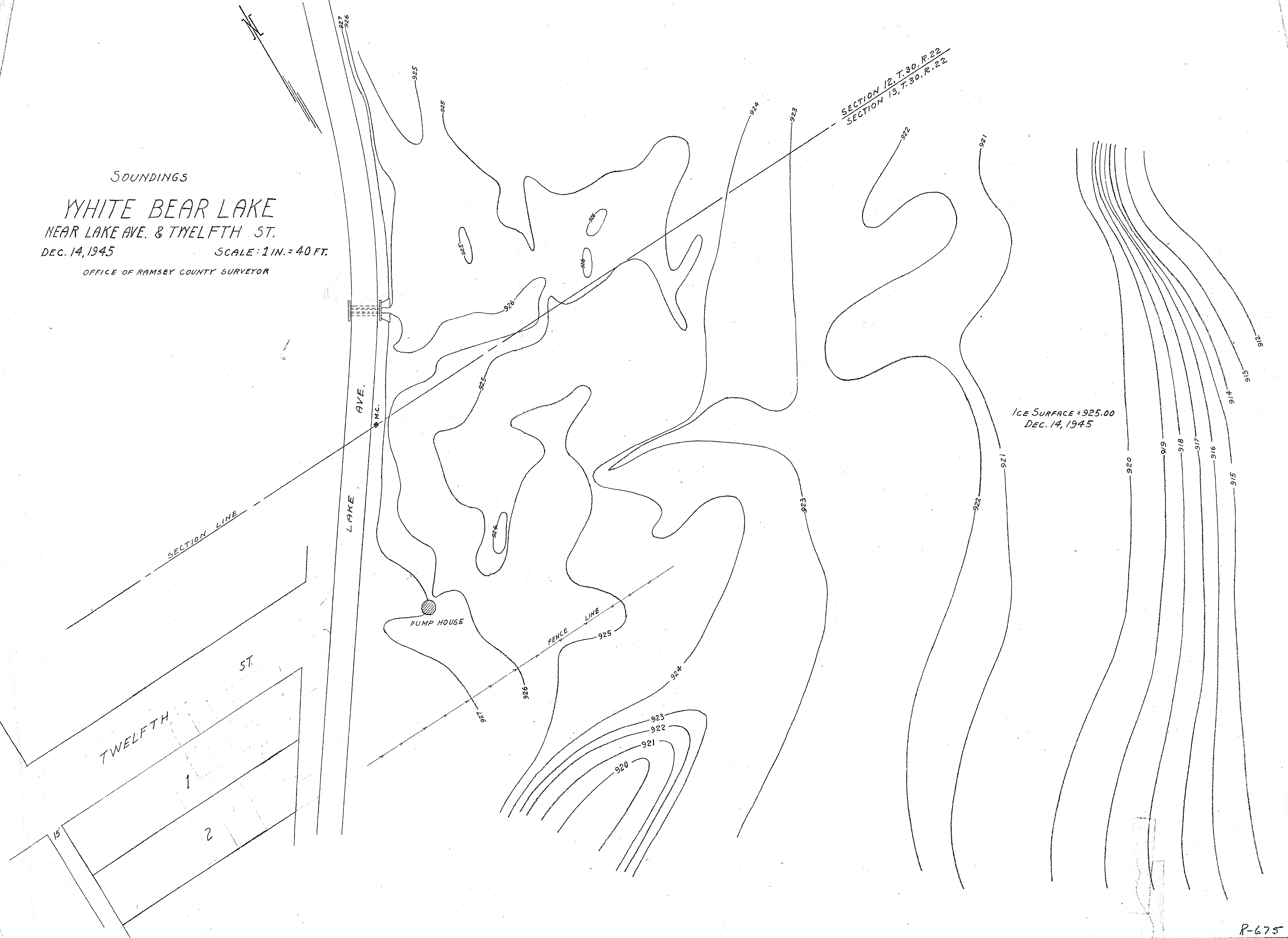
TRING 2

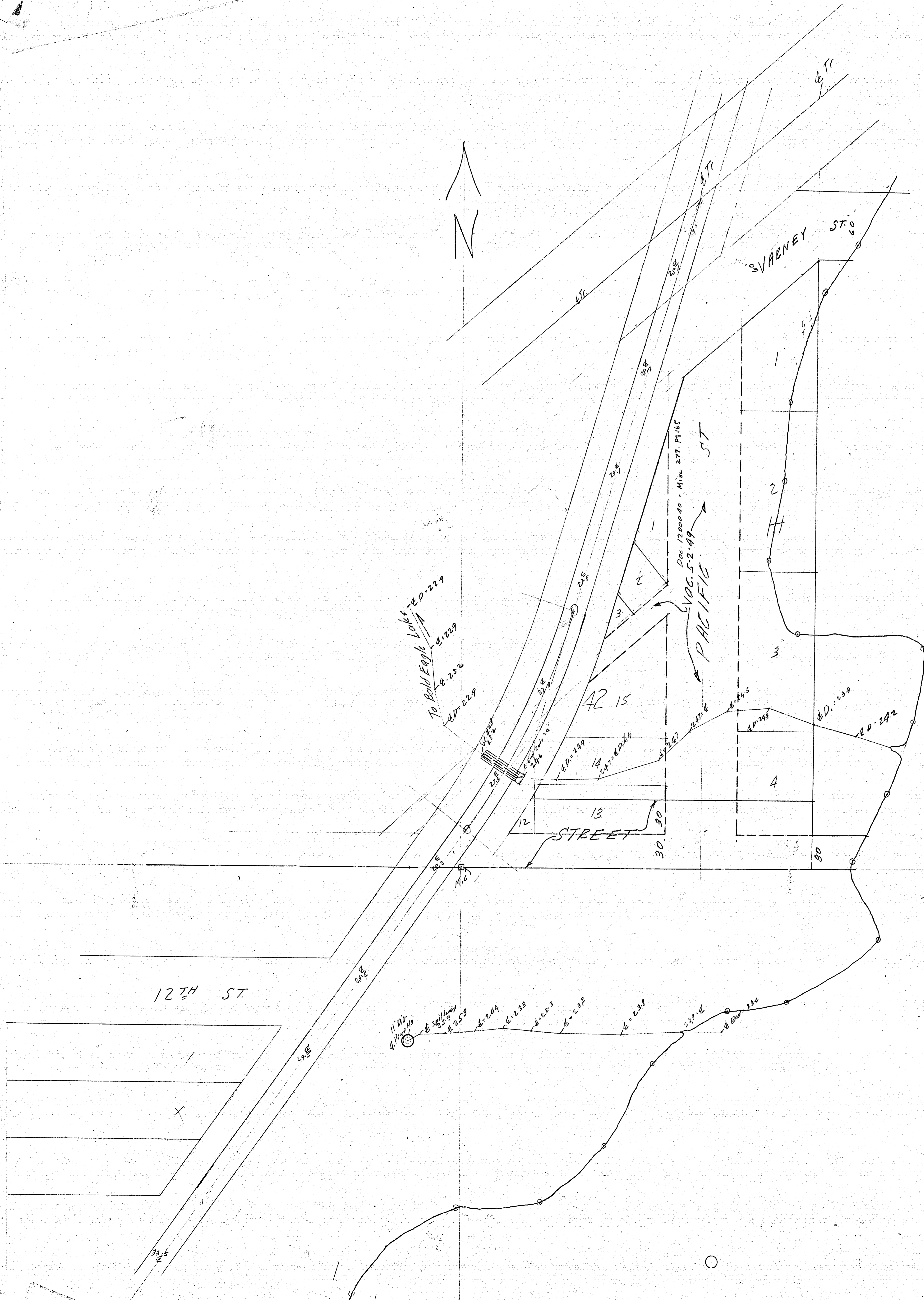
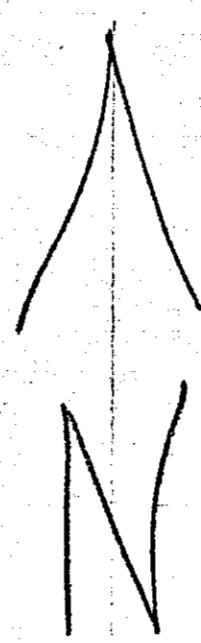
96



R-675

SOUNDINGS
WHITE BEAR LAKE
NEAR LAKE AVE. & TWELFTH ST.
DEC. 14, 1945 SCALE: 1 IN. = 40 FT.
OFFICE OF RAMSEY COUNTY SURVEYOR





WHITE-BEAR LAKE