

ANOKA COUNTY
RAMSEY COUNTY

HENNEPIN COUNTY

NEW BRIGHTON
JUNCTION

LAKE JOHANNA

TOWNSHIP 29 N. RANGE 24 W.
TOWNSHIP 29 N. RANGE 23 W.

TOWNSHIP 30 N. RANGE 23 W.
TOWNSHIP 29 N. RANGE 23 W.

BEGIN - VAL. SEC. 1
END - VAL. SEC. 7

City Limits and County Line

R-6



28

27

26

27

34

35

No. 47
 5214 P.L.
 10' 10" x 10' 10"
 D 1' 15"
 A 10' 20"
 5214 P.L.
 10' 10" x 10' 10"
 D 1' 15"
 A 10' 20"

No. 48
 5490
 141' 14" x 141' 14"
 5490
 141' 14" x 141' 14"

No. 49
 5500
 5500
 141' 14" x 141' 14"
 5500
 141' 14" x 141' 14"

No. 50
 D 2' 30"
 A 25' 11"
 5213 P.L.
 5213 P.L.
 D 1' 15"
 A 25' 11"

No. 51
 60023 H.L.
 60023 H.L.
 60023 H.L.
 60023 H.L.
 60023 H.L.

No. 1
 600
 600
 600
 600

No. 2
 620
 620
 620
 620

No. 3
 640
 640
 640
 640

No. 4
 660
 660
 660
 660

No. 5
 680
 680
 680
 680

No. 6
 700
 700
 700
 700

LAKE JOHANNA

ISLAND LAKE

Note - Right of Way forced on both sides from
 Sta 534+10 to Sta 606+74.5
 Plan No. 104

March Mark

March Mark

8

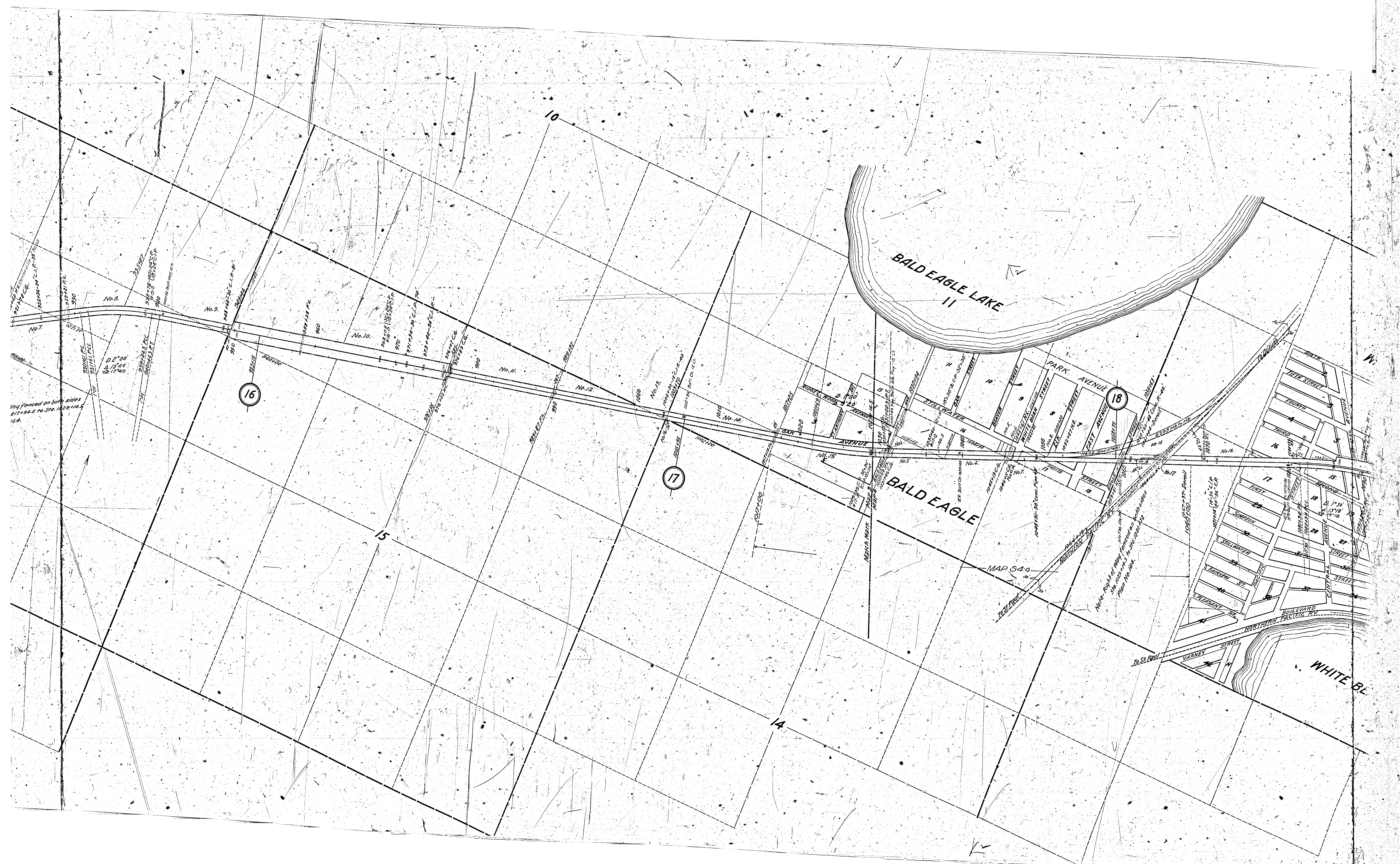
9

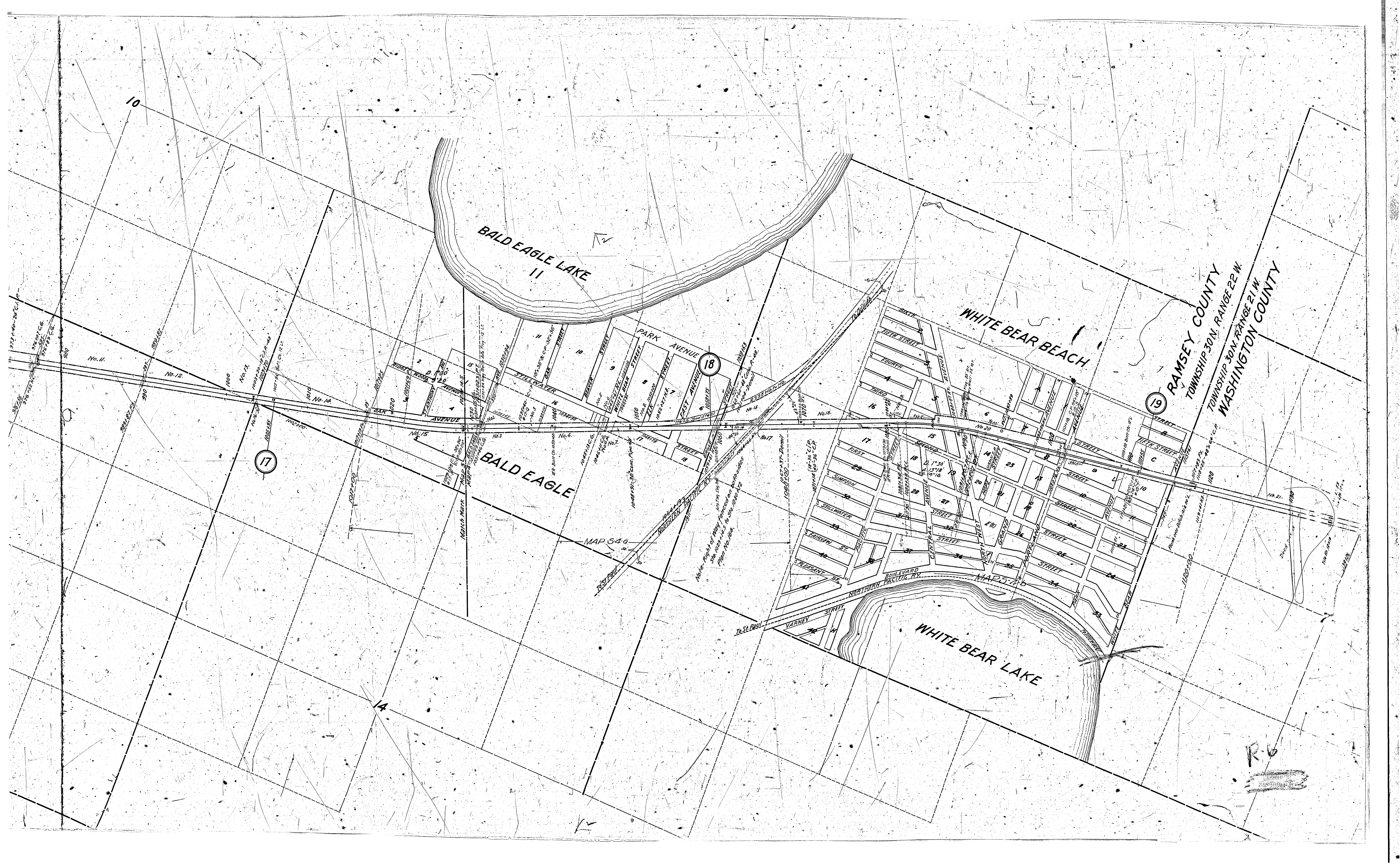
10



Note - Right of Way fenced on both sides from Sta. 606+74.5 to Sta. 817+94.5 Plan No. 164.

4-20' - 1' Beams Plan No. 7190
4-15' - 1' Beams Plan No. 7188
Concrete Abutts. - Plan No. 7187





BALD EAGLE LAKE
11

WHITE BEAR BEACH

WHITE BEAR LAKE

RAMSEY COUNTY
TOWNSHIP 30 N. RANGE 22 W.
WASHINGTON COUNTY

17

18

19

BALD EAGLE

MAP 540

MAP 576

NOTE: Right of Way Traced on
Sta. 1022+14.5 to Sta. 1020+17.2
Plan No. 1024

To St. Paul

R. 6