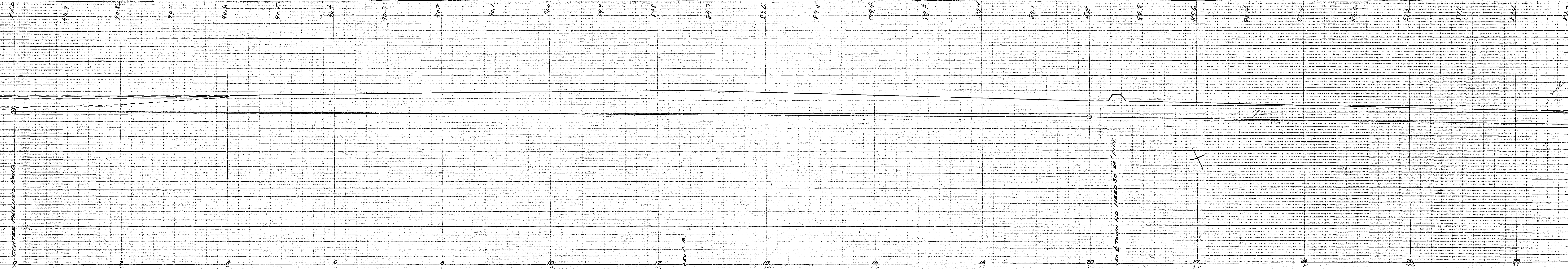


MICROFILMED  
RAMSEY CO. ENGR.  
2583



"Perfect" PROFILE PAPER.  
PLATE B.

"Perfect" PROFILE PAPER.  
PLATE B.

"Perfect" PROFILE PAPER.  
PLATE B.

# COUNTY DITCH No.

IN SECS T & B. T. 30, R. 23.

J.H. ARMSTRONG  
COUNTY SURVEYOR  
NOV. 1913



"Perfect" PROFILE PAPER.  
PLATE B.

"Perfect" PROFILE PAPER.  
PLATE B.

MICROFILMED  
RAMSEY CO. ENGR.

R583