

DITCH No. 10.

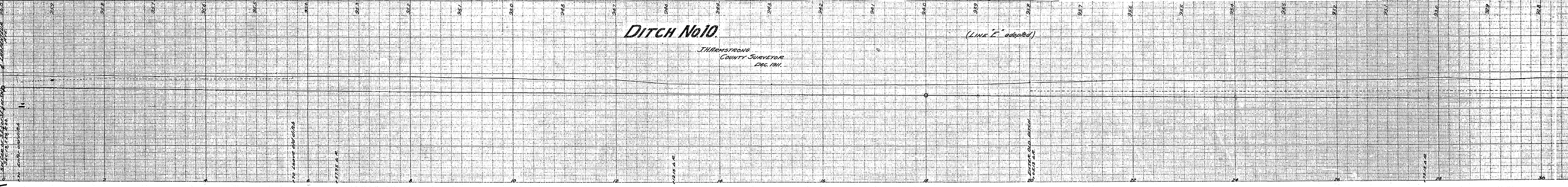
J. ARMSTRONG
COUNTY SURVEYOR
DEC. 1911.

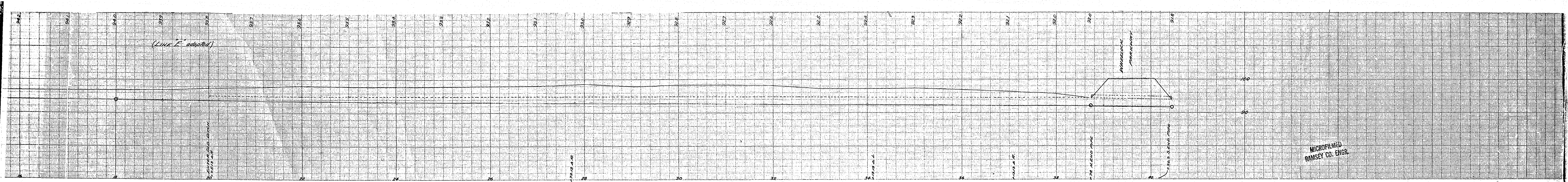
(LINE "E" adopted)

MICROFILMED
RAMSEY CO. ENGR.

BOOK 38, PAGE 53

• R 575

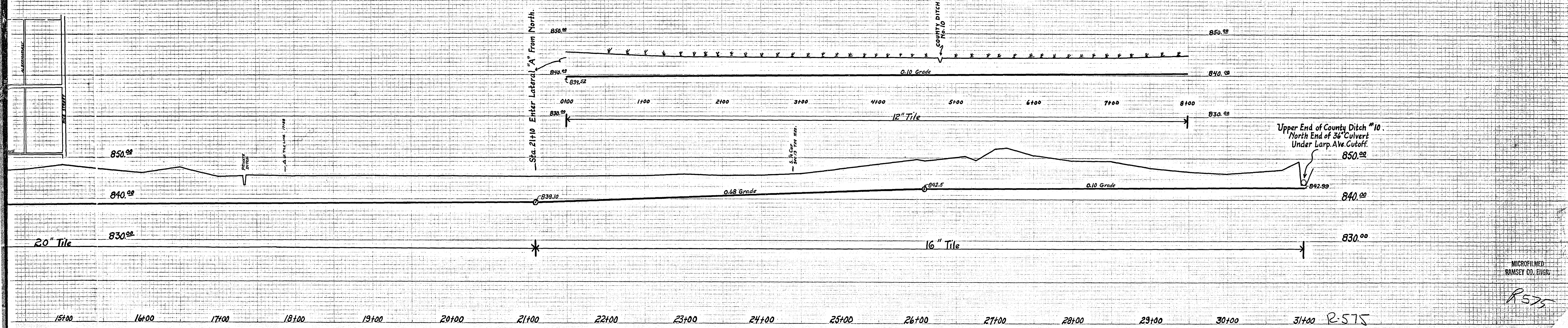




MICROFILMED
RAMSEY CO. ENGR.

R-575

Lateral "A" North Through Floating Boggs.



MICROFILMED
RAMSEY CO. ENGR.

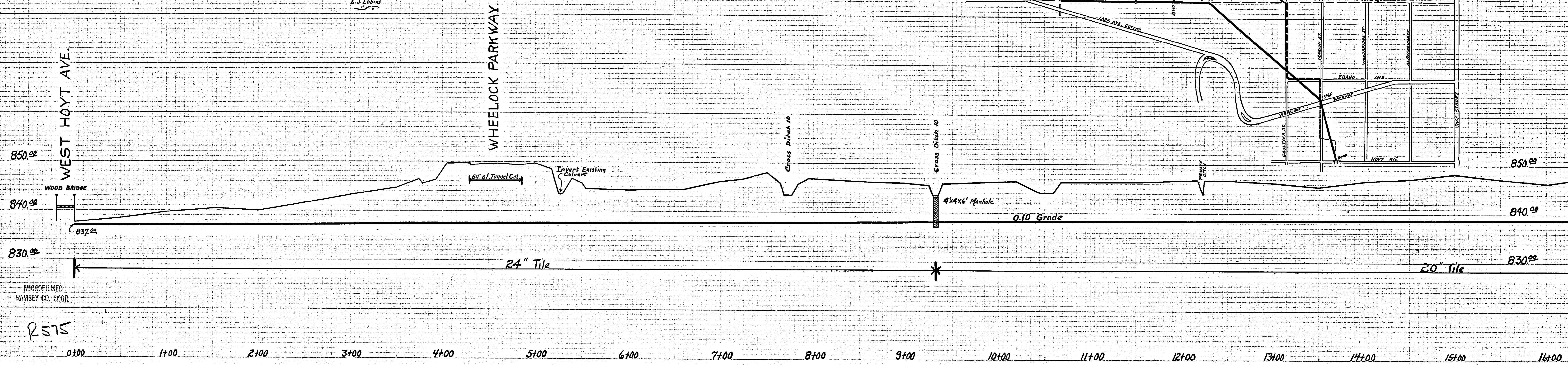
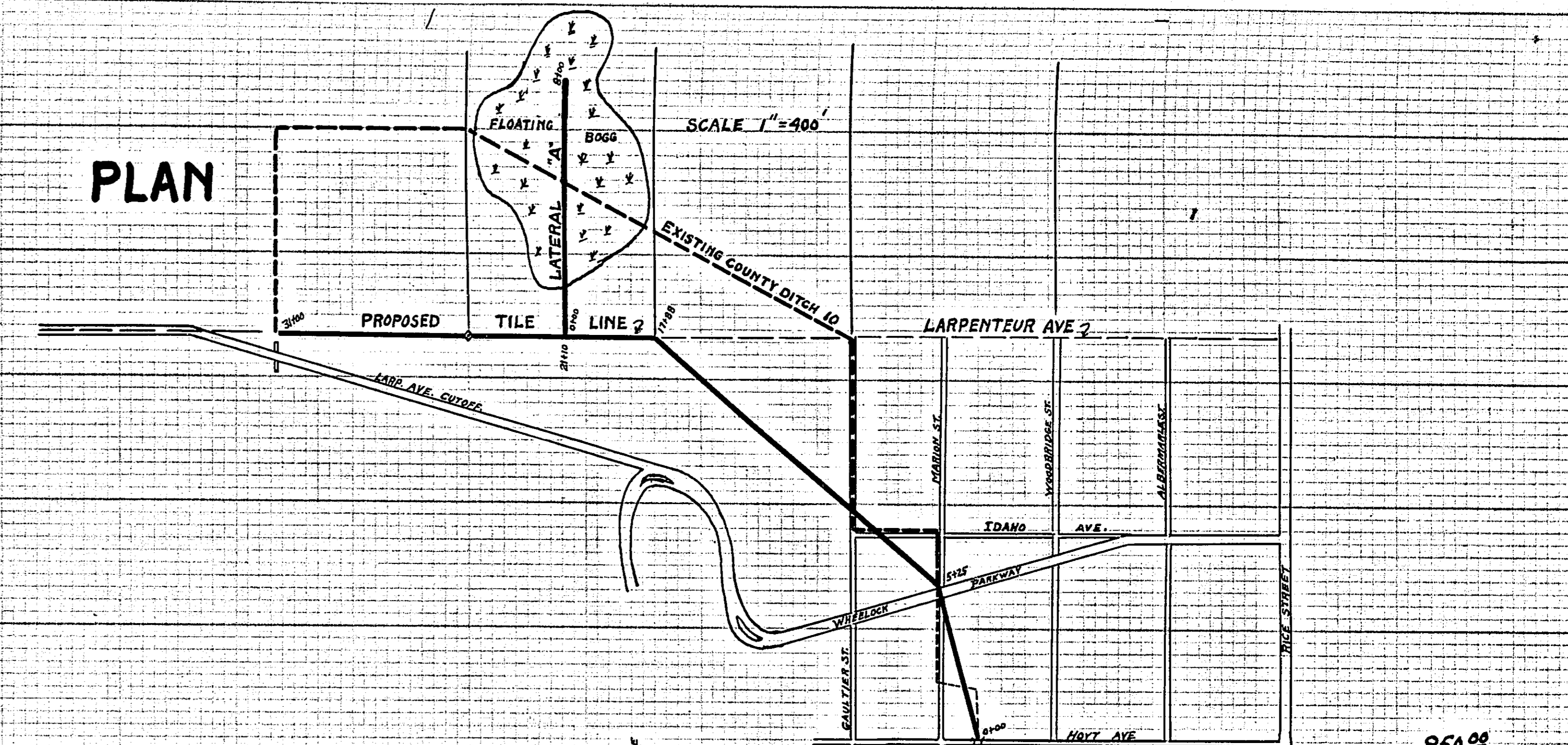
R575

R-575

PROPOSED "TILE" RECONSTRUCTION of RAMSEY COUNTY DITCH No. 10

OFFICE of RAMSEY COUNTY ENGR.
1-10-29
PAUL N. COATES COUNTY ENGR.
PREPARED
by
L. J. Lubins

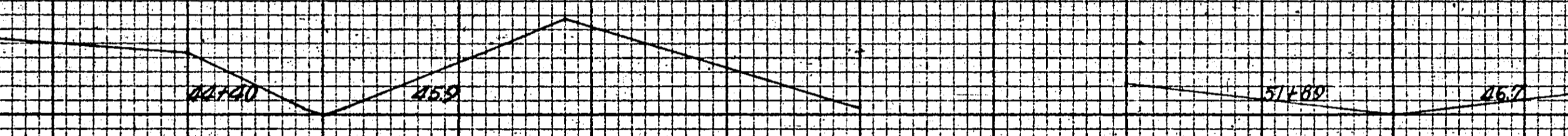
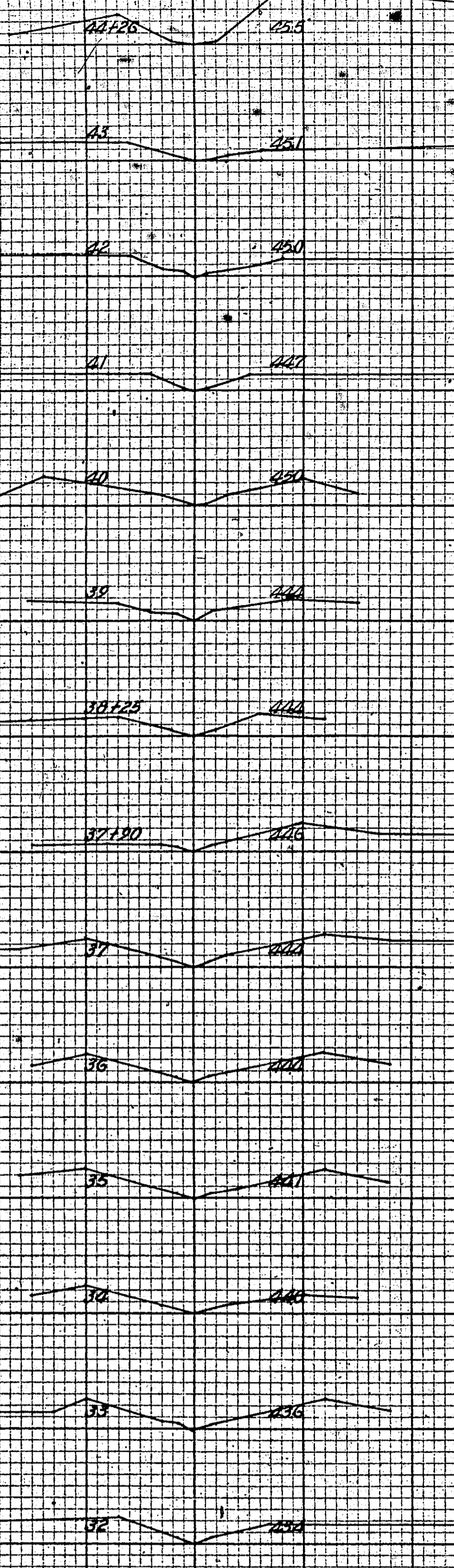
PLAN



272-4

MICROFILMED
RAMSEY CO. ENGR.

2575



LARRENTEUR AVE.



850
840
830

R'575

EVERETT METER CO.
CROSS SECTION 10" - 1" INCH

EVERETT METER CO.
CROSS SECTION 10" - 1" INCH



OFFICE OF
 RAMSEY COUNTY ENGR.
 PLAN OF
RAMSEY COUNTY
DITCH NO. 10.
 SURVEY SEPTEMBER 6, 1926
 L.J. LUBINS

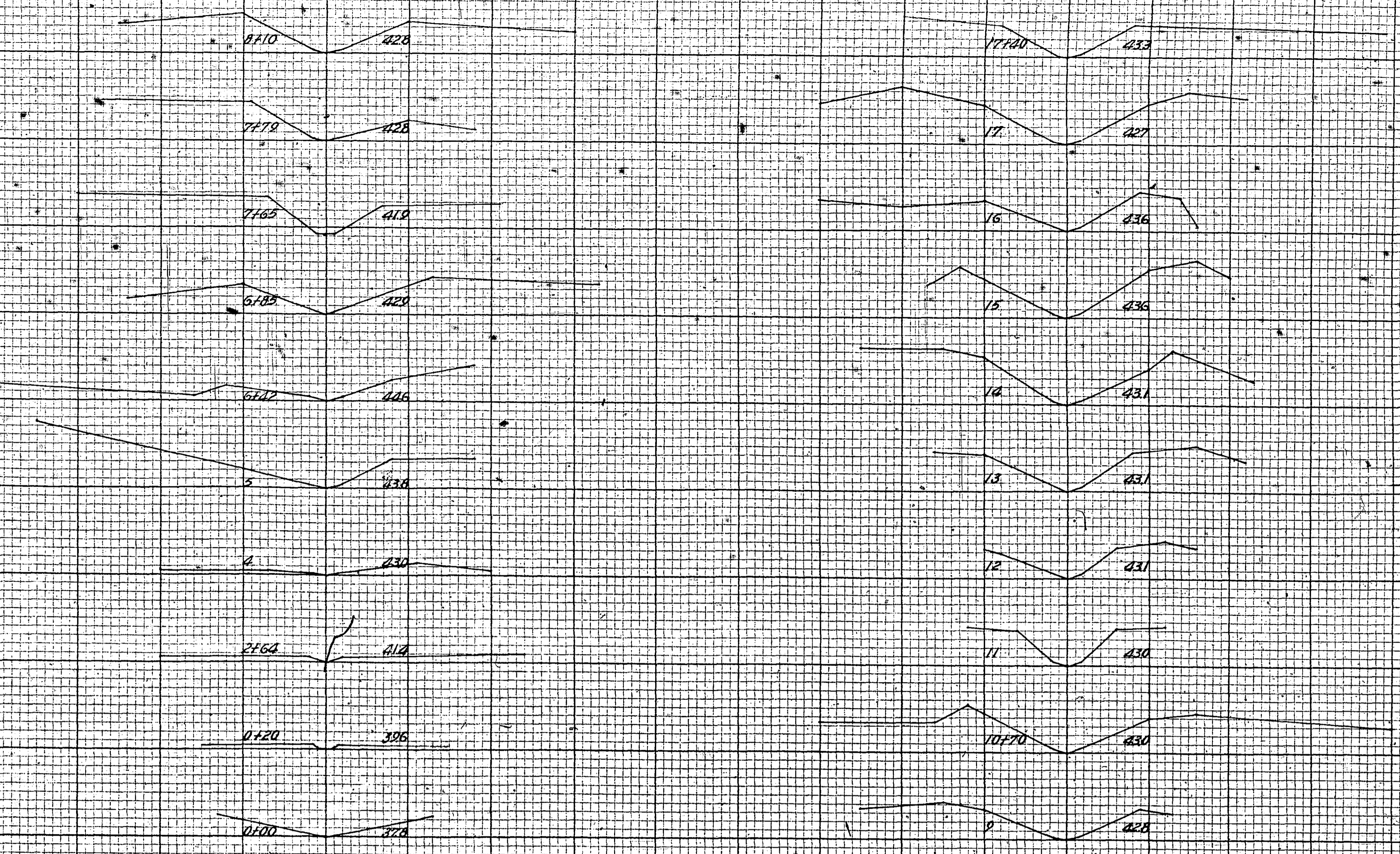
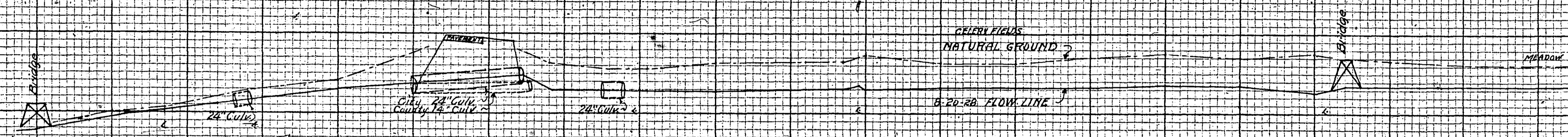
R575

850
 840
 830

HOYT AVE.

MARION ST.

WHEELLOCK PKWY.



ENGINE DISTRICT CO.
 CROSS SECTION 10 - 10 - 1 INCH

ENGINE DISTRICT CO.
 CROSS SECTION 10 - 10 - 1 INCH