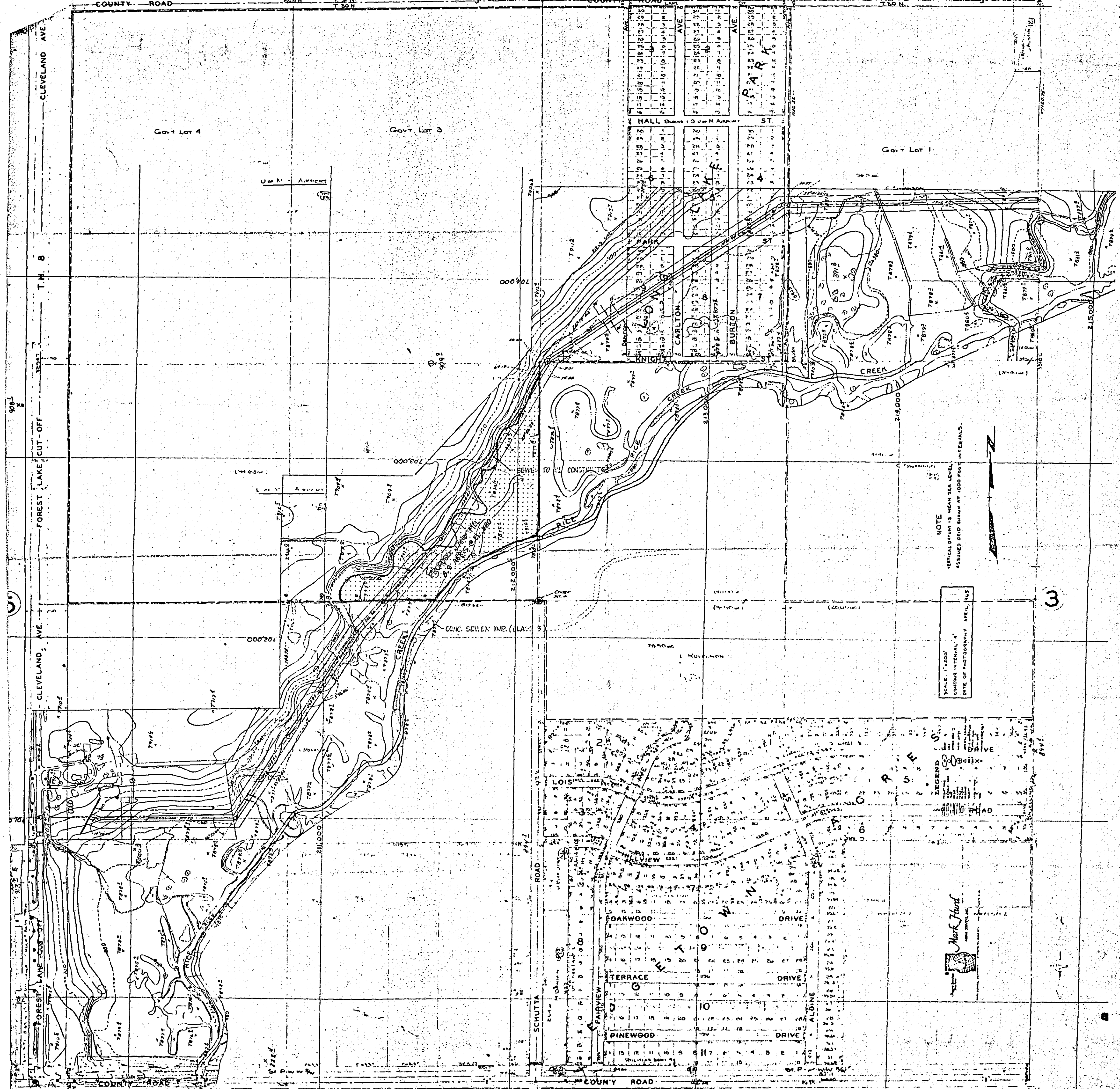


SECTION 4 T.30 R.23

K-522

ANOKA COUNTY ANOKA COUNTY



NOTE
 VERTICAL DATUM IS MEAN SEA LEVEL
 ASSUMED GRID SHOWN AT 1000 FOOT INTERVALS.

SCALE 1"=200'
 CONTOUR INTERVAL 4'
 DATE OF PHOTOGRAPHY APRIL, 1955

LEGEND
 DRIVE
 ROAD
 CREEK
 CONCENTRIC
 CONC. SEWER INP. (LAY)
 POWER LINE
 FENCE
 ELEVATION
 SPOT ELEVATION
 ELEVATION

Mark Hard
 PHOTOGRAPHER
 1000 BROADWAY
 ST. PAUL, MINN.

4-30-23 SCHOOL DIST. NO. 821

9

OFFICE OF COUNTY ASSESSOR
 COURT HOUSE
 ST. PAUL MINN.

MICROFILMED
 RAMSEY CO. ENGR.
 R-55